



Arkansas State University-Beebe

Volume 10

Meeting the Challenge

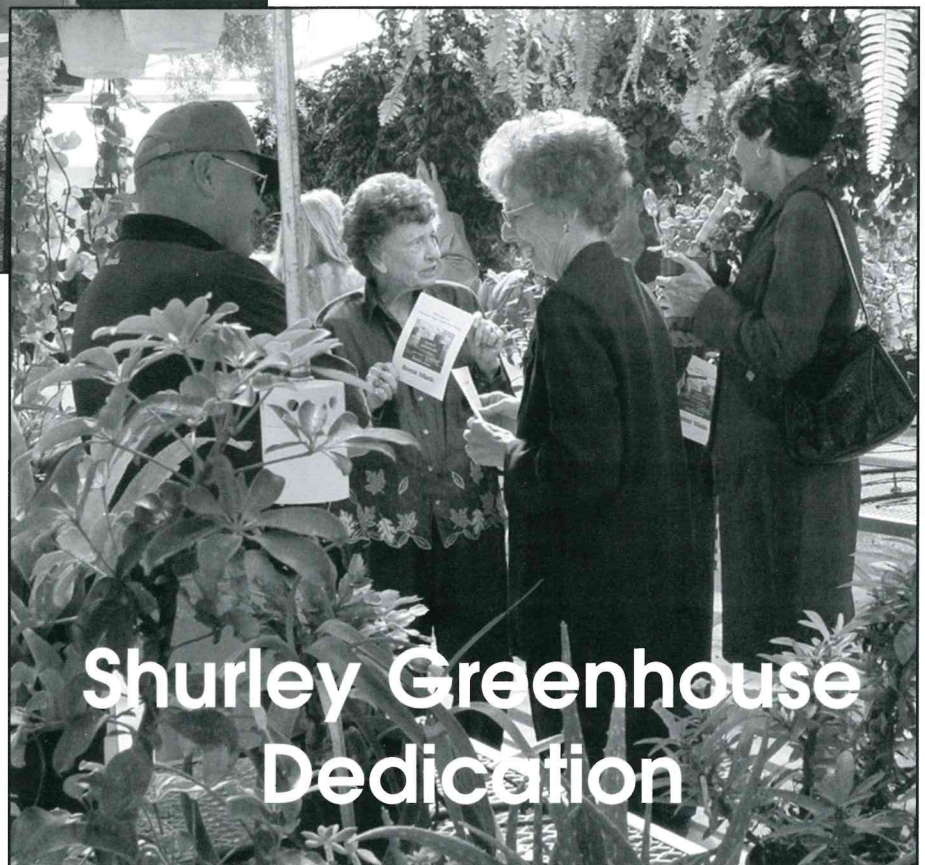
Fall 2004



The Shurley Greenhouse is the newest addition to the Arkansas State University-Beebe campus, thanks to a generous donation from Billy and Brenda Shurley of Cabot. It was celebrated with an open house in October at the ASU-Beebe Farm Complex.

Arkansas State University-Beebe celebrated the dedication and ribbon-cutting recently for the newly completed Shurley Greenhouse at the University Farm. A generous donation from alumni Brenda and Billy Shurley of Cabot funded the building, which is used for teaching and experiments.

During the dedication, Dr. Eugene McKay, chancellor, said,



Please see 'Farm' on Page 20

Message from the Chancellor:

ASU-Beebe seeing growth

Arkansas State University-Beebe, with campuses at Beebe, Searcy, Heber Springs, and the Little Rock Air Force Base, continues to grow with a fall 2004 unduplicated enrollment of 3,651, making it 11th among the state's 43 colleges and universities and third in full-time student enrollment

hours among the state's 22 two-year colleges. ASU-Beebe produced more associates degrees than any other state two-year college; in addition, we awarded 197 technical certificates.

The university has purchased 250 acres of land, including Sugarloaf Mountain, just east of the Heber Springs by-pass. The Wilcox Group has developed a campus master plan and design for phase one development. Two beautiful buildings will be built as soon as funding is available. Enrollment is growing at Heber Springs with a headcount of more than 500 and an annual FTE of around 240.

We are in the early planning stage of a master plan for the Searcy campus and hope to have that completed next year. The HVAC system was replaced in the main building this summer. Enrollment continues to grow at Searcy with more than 300 FTE in credit courses and over 5,000 enrolled in non-credit programs during the year.

Thanks to the financial support of Brenda and Billy Shurley,



**DR. EUGENE
McKAY**

the Beebe campus has a new greenhouse.

Beebe is also planning the development of a new multi-million dollar science building to be completed by 2007. The Beebe campus has expanded its visitor parking in its on-going effort to be a more user-friendly campus. The new exit on U.S.

67/167 should open before Christmas. Because the campus is visible from this exit, it should become our preferred entrance to the campus. Directional signage has been placed throughout the campus to assist visitors who are looking for a particular building.

The war in Iraq has had a significant impact on our enrollment at the Little Rock Air Force Base. Deployments and post-9/11 access restrictions have resulted in declining civilian enrollment at the Base, but enrollment should rebound after the troops return and restrictions are lifted.

Because of the down turn in the economy and the court ruling that public education was not adequately and equitably funded, higher education has not fared well in state funding during the past four years.

ASU-Beebe's enrollment continues to grow while state funding for ASU-Beebe is less than it was in 2001. We hope the next legislative session will begin the recovery process for higher education and the economy will rebound.

What's inside ...

Page 2

**Message from
the Chancellor**

Page 4

**Message from
Advancement**

Page 6

**Annual Concert
Series Events**

Page 9

**Pizza Pro makes
large commitment**

Page 10-11

**Annual Chancellor's
Dinner Celebration**

Page 12

**Donors, Friends
of the University**

Page 16

**Development Council
exceeds its goal**

Page 19

**Annual awards
banquet honorees**

ASU-Beebe

MEETING THE CHALLENGE

is published annually by the staff of Arkansas State University-Beebe, State Hall, Palm & Iowa Streets, Beebe, AR 72012-1000.

Bulk non-profit rate postage paid at Little Rock, AR.

ASU-Beebe

P.O. Box 1000

Beebe, AR 72012-1000

This publication is distributed free of charge to ASU-Beebe personnel, alumni, and supporters of the University.

Sen. Lincoln addresses spring gradu-

By Brandi Hinkle

Director of Public Information

As the graduating classes of 2004 at Arkansas State University-Beebe were looking to where the future might take them, U.S. Sen. Blanche Lincoln reminded them to remember from where they came.

In addressing commencement exercises, Lincoln outlined three valuable lessons she has learned during her tenure in Washington, first as a congressional aide, second as a U.S. representative, and finally, as only the second woman senator from Arkansas.

“Don’t be afraid,” Lincoln cautioned. “In a world where things don’t seem to make sense anymore, it would be very easy to find a hole somewhere, crawl into it and wait until things get better.

“But times like these require fearless living. When I first ran for public office, I was a young unmarried woman, who was running against a 24-year incumbent. He had the name recognition, he had the money, he had the party behind him.

“All I had was my parents, the rest of my family, a small group of friends, and an idea that the people of east Arkansas deserved more from their elected officials.

“More than anything else, we were fearless,” Lincoln said. “We were not afraid to fail. But, just as important, we were not afraid to succeed. I’m telling you, if you continue to face life’s challenges fearlessly, you eventually become fierce.

“Dream big dreams,” she con-



U.S. Sen. Blanche Lincoln encourages ASU-Beebe graduates to aim high. (photos by Brandi Hinkle)

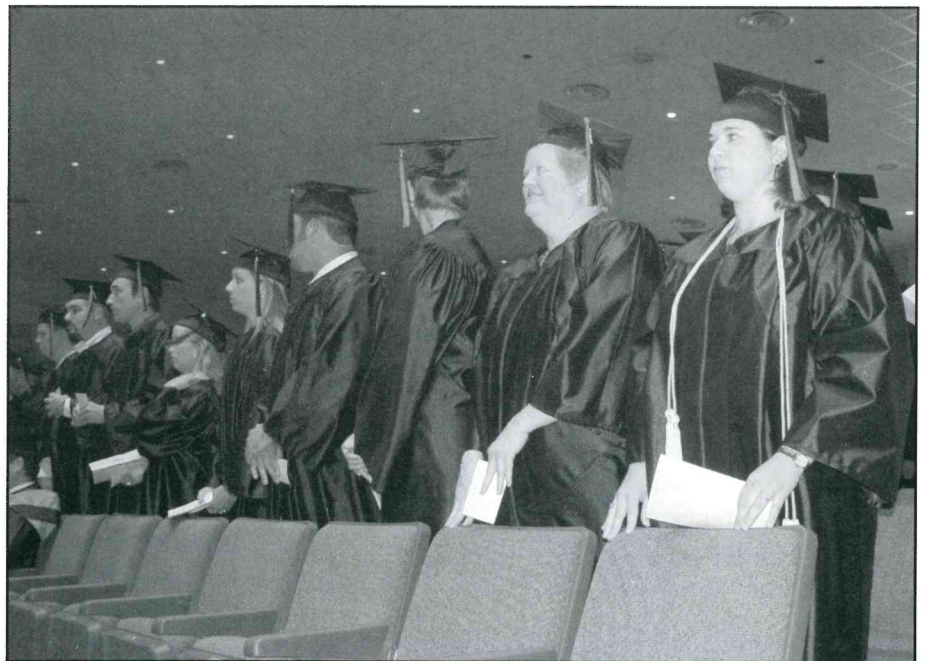
tinued, quoting noted educator Dr. Benjamin E. Mays. “It isn’t a calamity to die with dreams unfilled, but it is a calamity not to dream. It is not a disgrace to

not reach the stars, but it is a disgrace to have no stars to reach for. Not failure, but low aim, is a sin.’

“Again, I can find this lesson in my own life. When I first moved to Washington, I worked as a Congressional aide. That experience allowed me to learn how Washington worked. But, more than that, I was able to learn how Washington didn’t work.

“To put it more simply, I learned who Washington worked for and who it didn’t work for. From that experience, I began to wonder why our government didn’t work for everyone as well as it worked for a few. Government should work for everyone the same.

Please see ‘Grads’ on Page 18



Graduates from ASU-Beebe and the ASU programs from Jonesboro on the Beebe campus were addressed by U.S. Sen. Blanche Lincoln in her only commencement speech this spring.

From the Office of Institutional Advancement

University sees support, growth, opportuni-

Any organization, individual or institution is judged by the support and care it receives from its family and friends. We at Arkansas State University-Beebe count ourselves as one of the blessed.

Two years ago the Development Council of the University agreed that we needed additional scholarship funds to help those people that may not receive financial assistance. The Development Council endeavored to raise monies in order to set up a \$100,000 Scholarship Fund in order to help our students.

The result was beyond expectations.

Not only was the goal reached, but additional scholarships were established to help make the total count of new scholarship monies pledged almost a quarter of a million dollars, which includes the \$103,000 raised for the Development Council Endowment Scholarship.

As you can see on the front page, the Shurley Greenhouse is a beautiful addition to the campus. Billy and Brenda Shurley are two of many people that we consider blessings to our University. We cannot thank them enough.

Scott Stephens and the Pizza Pro family understood the need for scholarships in this community. The Pizza Pro scholarship will be the largest individual scholarship endowment at ASU-Beebe. Maybe you're hungry for pizza. Give your local Pizza Pro a call, order a large pepperoni, and thank them for their support of area students. Thanks, Pizza Pro, for your support.

In order to set up a living memorial, the family of Doris Whittaker, graduate of ASU-Searcy, formerly Foothills Technical Institute, established the Doris Waddle Whittaker Scholarship at the technical campus of ASU-Beebe. Established for nursing students at ASU-Searcy, we are honored that the Whittaker family cared enough about ASU-Searcy to provide such an incredible memorial. We cannot thank them enough.



KEITH PINCHBACK

Numerous people have helped us reach our goal. Some are listed in this report. Please understand how important you are to the growth of our University. We cannot thank YOU enough.

By the time you read this, the Office of Institutional Advancement will have moved to a new location across from State Hall. We expect to host an open house sometime in early December, so make plans to attend.

Please remember, if you wish to make a donation to any scholarship, the annual fund or would just like to chat, call us at (501) 882-8255 or via e-mail at gkpinchback@asub.edu.

Without your past and present moral and financial support, ASU-Beebe could not have reached the heights it has achieved.

Keith Pinchback

Director of Institutional Advancement



Development Council members for 2004-2005 are (front row, from left) Dewitt Yingling, Sheryl Priest, Doris Barnes, (second row, from left) Dr. Ruth Couch, Andy Anderson, Marvin Jones, Garland Kirkpatrick, Mike Fisher, (third row, from left) Chuck Wisdom, Garth Martin, (back row, from left) Jerry Morgan, Randy Busbea, and Hugh Burge. Not pictured are Melanie Taylor, Cathy Eoff-Tiratto, Roy Simmons, Letain Devore, and Laverne Hale.

Alumni Association Activities

Alumni provide book scholarship monies



The ASU-Beebe Alumni Association awarded Robert "Mark" Quick (from left), a freshman liberal arts major of El Paso, and Shola McFadden, a sophomore computer systems technology major of Cotton Plant, a \$200 book scholarship each, renewable for the spring. Also pictured is Randy Busbea, association president. (photo by Brandi Hinkle)

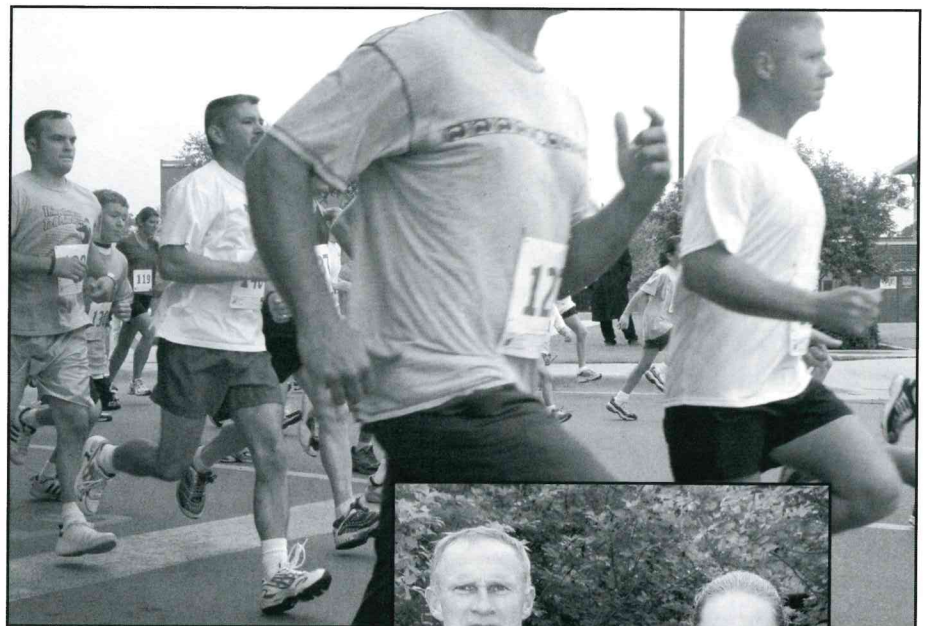
5K Race participants set course records

The fifth annual Alumni Association 5K race was a great success, and a new scholarship was established with the funds raised (see photo above).

Some 53 runners and six walkers competed in the annual April event.

James Bresette, 42, of Clinton was the overall winner, setting a new course record with a time of 16:41:32. The former best time was 18 minutes.

Emily Carpenter, 14, of Carlisle, was the women's winner with a time of 19:11. This is the third time she has run in the race, and she has been the overall female runner each time.



James Bresette, 42, of Clinton, and Emily Carpenter, 14, of Carlisle were the overall winners in the male and female categories in the fifth annual 5K race held in April each year.





Community Bank CEO Tracy French presents a generous donation to Dr. Eugene McKay, chancellor, to benefit the 2004-2005 Concert Series. Pictured are (from left) Keith Pinchback, director of institutional advancement, Jim Haynes, Community Bank of Beebe president, French, McKay, Dr. Chuck Welch, vice chancellor for academic affairs, and Chuck Widsom, business development officer.

University welcomes great acts

The 2004-2005 concert series, sponsored by Community Bank, offers an eclectic mix of entertainers and presenters, from jazz and the story of bluegrass to acrobats.

The calendar includes:

**Jack Daniels Original
Silver Cornet Band**

Friday, Dec. 10

Created by whiskey entrepreneur Jack Daniels, the original group is recreated by a band of superb musicians. Like setting your pocketwatch back, the Jack Daniels Original Silver Cornet Band celebrates the turn-of-the-century sound in "Hometown Christmas."

**"Keep on the Sunny Side – The
Songs and Story
of the Carter Family"**

Tuesday, Jan. 18

This is the story of a gaunt, shy gospel trio that sang pure, simple harmony, influencing numerous musicians in folk, bluegrass and rock with "Wabash Cannonball" and "Will the Circle Be Unbroken." Presented by the Barter Theatre players, the play features music and lyrics by the original Carter family.



**CHINESE GOLDEN
DRAGON ACROBATS**

**Chinese Golden
Dragon Acrobats**

Tuesday, March 22

This oldest of all art forms has evolved into a more sophisticated performing art, making the Chinese Golden Dragon Acrobats the world's leading Chinese acrobatic troupe. The members are actors, athletes and artists with an unmistakable love for their art.

Ticket prices are \$10 per con-

cert event. Senior citizens tickets are \$8, and student ticket prices are \$3. Ticket outlets in Beebe include ASU-Beebe Student Center, Burrow's Drug, Health-Way Sav-On Drugs, and Beebe Flower Shop. Outlets in Searcy include Stotts Drug and the Office of Student Services at ASU-Searcy, a technical campus of ASU-Beebe.

All concert series events begin at 7:30 p.m. and are held in the Owen Center Theater on the campus of ASU-Beebe. The Theater Box Office will open at 6:45 p.m. for 7:30 events, with seating beginning at 7 p.m., as permitted by artists' contracts. Season ticket holders will be seated for the first 10 minutes after seating begins.

Ten minutes before curtain, all vacant seats will be released to the general public, and all seating is general admission. For more information, please call the ticket office at (501) 882-8351.

Washburn, longtime registrar, retires

By Charlene Chambers

Office of Public Information

James Washburn, registrar and director of admissions for Arkansas State University-Beebe, retired from the university the first of July.

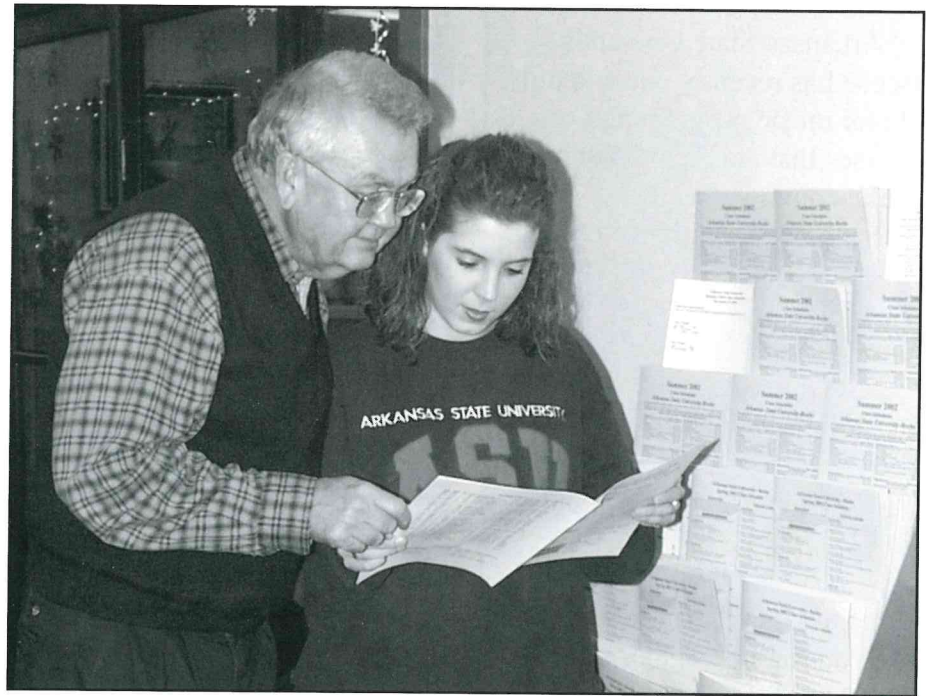
The Floyd native began work at ASU-Beebe in 1981 as director of the talent search program for the first four years before transferring to the admissions and registration offices, where he served as director for the past 19 years.

Washburn graduated from Beebe Public Schools before earning his associate's degree from ASU-Beebe, where he was named Mr. Arkansas State Junior College in 1961. He then attended the University of Central Arkansas, where he earned both his bachelor's and master's degrees.

Before his tenure with ASU-Beebe, Washburn taught mathematics at Osceola Public Schools. He later served as the high school counselor for both Osceola and Searcy high schools and was a counseling supervisor for the Department of Education.

"These experiences of working in the public schools and especially the counseling field helped give me insight into the educational needs of the student," said Washburn. "I especially enjoyed helping people become successful, and education can be the key to that success!"

Over the years, Washburn has watched ASU-Beebe's enrollment more than triple, from 693 students to more than 2,300 on campus and some 1,000 students at



Registrar James Washburn and former student Alison Tiner peruse the class schedule. (photo by Brandi Hinkle)

its branch campuses located at the Little Rock Air Force Base, Heber Springs, and Searcy. During this time, Washburn has been dedicated to meeting the students' needs through the advising process.

"It has been quite satisfying to have assisted in building ASU-Beebe's enrollment and programs," said Washburn. "The purpose of all educational decisions should focus on benefiting the students."

Washburn was married for many years to the late Cathy Washburn, who was also a longtime employee at ASU-Beebe, serving as a faculty instructor at the Learning Center.

Retirement plans for Washburn include traveling and visiting his children and their families, including his daughter, Dr. Lisa Arnhart, and her hus-

band David of Albuquerque, NM; his son, Dr. Allen Washburn, and his wife Suzanne of Fayetteville; and his three granddaughters, Camber and Mary Catherine Arnhart, and Isabelle Washburn. An avid golfer, Washburn plans to enjoy some leisure time on the golf course, as well as compete in a few area tournaments.

Washburn recently received the Chancellor's Award, which reads "for 24 years of dedicated service to ASU-Beebe students and for making ASU-Beebe a more student-centered university."

Washburn shared a humorous motto that has guided him in his life: "No one cares how much you know until they know how much you care!"

And, as many can attest, Washburn has cared a lot about ASU-Beebe and its students over the years.

Music program expands offerings

Arkansas State University-Beebe has recently expanded its choral music program and offers courses that may appeal to many in the community.

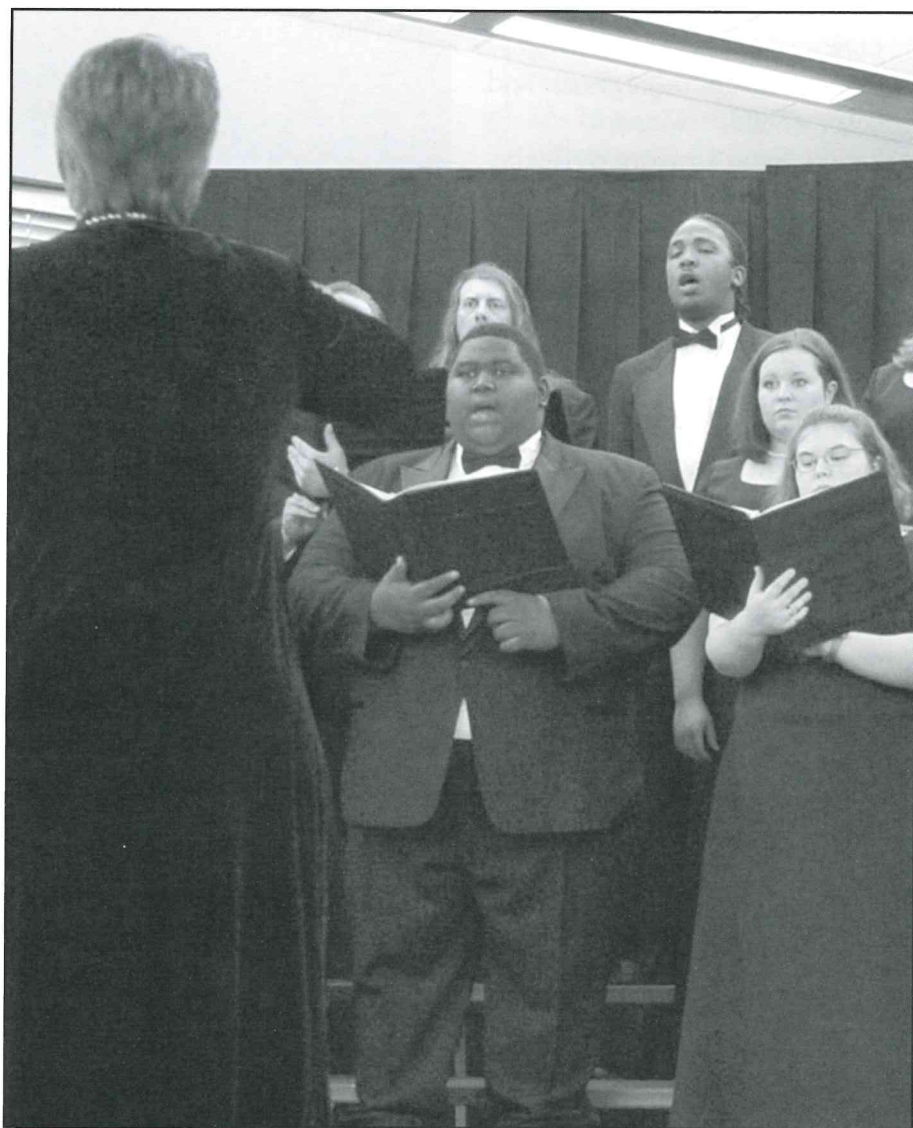
Specializing in piano/choral music education, the music program offers classes such as Music Fundamentals, four semesters of Music Theory and Ear Training, Choral Ensembles, Recital Hour, and private and class instruction in piano and voice.

Voice class meets Monday evenings from 6 to 8 p.m. beginning during the regular semester on Aug. 23. Students will learn about the basics of singing, including breath support, pronunciation, good tone quality, and the rudiments of music reading for singers. Tuition cost is \$154 with fees for off-campus students.

"This is for the singer who has never had any formal voice instruction and will lay a good foundation for excellent singing," Dr. Tammie Burger, music program director, explained.

Private voice lessons are one-on-one half-hour sessions taught once per week this fall, she continued, and are for the singer that has had some voice instruction and would like to learn how to utilize his or her own voice better. Tuition cost is \$112 with fees for off-campus students.

Additionally, private piano lessons will also be taught in one-on-one in half-hour sessions once per week this fall for beginners to advanced piano students.



ASU-Beebe Singers perform at functions throughout the school year and will perform at Carnegie Hall in the spring.

Tuition cost is \$112 with fees for off-campus students. Space is limited for private lessons.

"If you love to sing and want to be a part of a vibrant, alive choir - come and join us!" Burger said. This choir meets Monday, Wednesday, and Friday from 10 to 10:50 a.m. The cost is \$231 per semester.

In the fall, the ASU-Beebe Singers will present its annual

holiday Madrigal Feast and will travel to perform at Carnegie Hall in New York City in spring 2005.

For more information about the music program, contact Dr. Burger via e-mail at tburger@asub.edu or by telephone at 501-882-8766. Visit the Office of Admissions online at www.asub.edu or call (501) 882-8260 or 1-800-632-9985.

Pizza Pro makes large commitment

By Brandi Hinkle

Director of Public Information

Pizza Pro, known for its community-oriented activities and support of worthwhile programs, has generously endowed a full scholarship to be awarded each fall to a sophomore at Arkansas State University-Beebe.

“Although Pizza Pro is a national company franchising nationwide,” Linda Matthews in marketing and research said, “we pride ourselves on being a company oriented to the needs of our individual franchisees and the needs of their communities.

“We are a grass roots organization realizing and helping meet the needs of our community with involvement in local schools, non-profit organizations and community service projects,” she said. “In addition, we greatly encourage active participation in and sponsorship of community sports programs.”

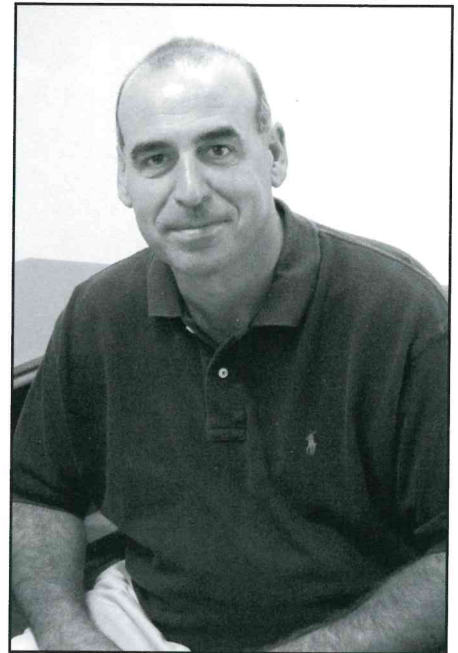
Founded in 1985 by Scott Stephens, the franchise business has more than 550 stores in 18 states, from the Carolinas to Alaska. From the first take-out and delivery store in Jacksonville, the company has grown to dine-in and full buffets in many of its restaurants.

“Our goal at Pizza Pro is to offer the highest quality food product and customer satisfaction at the best possible price,” Stephens said. “Pizza Pro was founded while in search of a higher quality more superior product over that of the national chains. Constant research and development help Pizza Pro keep

that consistent and superior quality product today.”

In 1992, the first franchised Pizza Pro location was opened. Initially, Pizza Pro was targeted in sparsely populated areas, but the concept has changed to add more heavily populated areas.

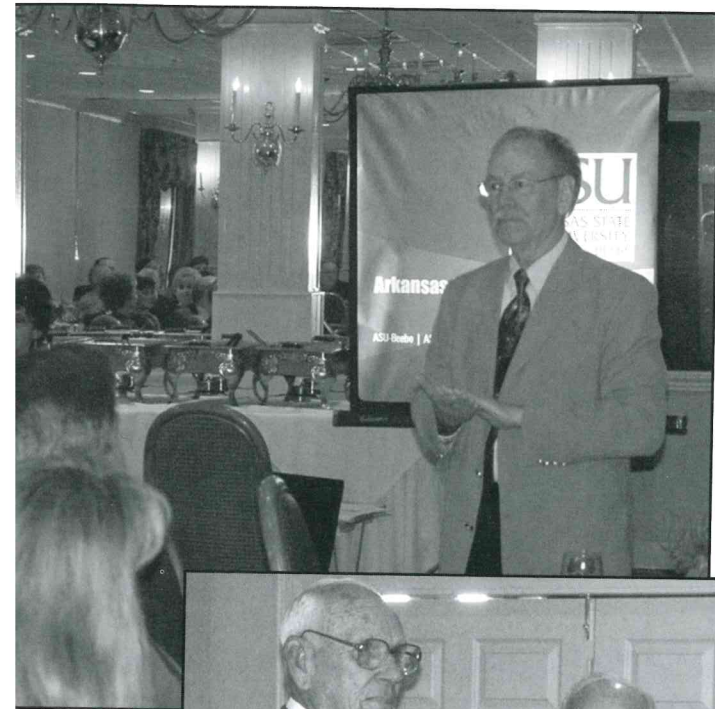
Scott Stephens (at right) and Pizza Pro have contributed a generous amount to fund a full scholarship to a sophomore at Arkansas State University-Beebe. Beebe location pictured below.



Annual Chancellor's



Dinner for Donors



Friends of the University celebrate its accomplishments and achievements at the annual Chancellor's Dinner, held at the Searcy Country Club in July.

Annual Fund Giving

Our special thanks to ...

ASU-Beebe is honored to recognize these alumni, faculty, staff and friends who have made an investment in Arkansas State University-Beebe during the 2003-2004 Annual Giving Fund Campaign:

Lifetime Members

E. H. "Doc" & Ruth Abington
Reita & Eddie Adams
Community Bank
Dr. Ruth Couch
Harry K. Dougherty Sr.
Walter & Louise England
Entergy of Searcy
First Arkansas Bank & Trust
First Baptist Church, Beebe
Dennis & Eva Gillam
John Deere Foundation
Garth & Joann Martin
Ben & Mary Anne Pickard
Richard & Thelma Powell
Regions Bank
Billy & Brenda Shurley
Stephens Incorporated
Wal-Mart of Searcy

Chancellor's Circle

Andy Anderson
Doris Barnes
Debbie Bratton
Randy Busbea
Jerry & Suzanne Carlisle
Charles & Jennie Cole
Letain DeVore
Barry & Linda Farris
First Security Bank
Laverne Hale
Joe Hastings
John & Robin Hayes
Lee & Betty Hayes

David & Jennifer Hurd
Chuck & Wanda Johnson
Garland & Wilma Kirkpatrick
Mr. & Mrs. Glen Lockeby
McDonalds of Beebe
Drs. Eugene & Judy McKay
Nancy Shefflette & John Hammes
Keith & Alana Pinchback
Roy & Ollie Mae Simmons
Subway of Beebe
Tom & Cathy Tiratto
Dr. Chuck & Mandy Welch
Jim & Sherry Wooten

Diamond Club

Judy Brooks
Morris & Dorothy Carlisle
Dewitt & Debbie Yingling

Anniversary Club

Linda Allee
Tom & Marc Anderson
Addie Banks
Sharon Been
Brian Berry
Dr. Jerry Burns
Candace Cooper
Frank & Hazel Dickey
Robert Doyal
Educational Systems Products
Macon & Bobby Edwards
Joan Finney

Charlie & Rosemary Frame
Brandi Hinkle
Jennifer & Bobby Holland
Michael Jeffrey
Allen & Karen Norton
Ralph & Dena Pryor
Mr. & Mrs. Bobby Robinson
H. M. Scott Lumber Co. Inc.
Martin & Jayne Spears
Dr. Mark Taylor
James Washburn
Lisa Vanoven

Friends of the University

Anita Baker
Beebe Lawn & Power Equip.
Chris Boyett
James Brent
Charlene Chambers
Bobbie Cordell
Jean Foreman
Nancy Hammes
Linda Jenkins
Dr. Melissa Meador
Metropolitan Fire Extinguishers
Charles & Faye Moore
Debra Nance
Neil Outar
Lanny Smith
Joe Taylor
Steve & Angie Totty
Alvin & Cindy Wheeler
Cleo & Mary Wolfe
Linda Yelder

The ASU-Beebe Office of Institutional Advancement has several annual gift categories to fit every level of giving: Lifetime Members (cumulative gift of \$10,000 and over); Chancellor's Cabinet (\$5,000 - \$9,999); Chancellor's Circle (\$500 - \$4,999); Diamond Club (\$250 - \$499); Anniversary Club (\$100 - \$249); Friends of the University (\$35 or couple \$50 - \$99). Information on the ASU-Beebe gift clubs may be obtained by contacting Keith Pinchback, Office of Institutional Advancement, P. O. Box 1000, Beebe, AR 72012 or call (501) 882-8255.

ASU-Searcy receives Whittaker endowment

By Brandi Hinkle

Director of Public Information

SEARCY – The family of Doris Waddle Whittaker was looking for a way to honor her memory and chose to establish a scholarship endowment for a very special program at Arkansas State University-Searcy, a technical campus of ASU-Beebe.

The 51-year-old nurse was killed in a two-vehicle accident on U.S. 67 on a Sunday afternoon in April 2002, on her way to care for elderly mother and disabled sister in Cabot. In what police termed a “senseless” accident, Whittaker was killed when her vehicle was struck head-on in the southbound lane when a 92-year-old Bradford man entered the freeway going the wrong direction, just south of Searcy.

A member of the Jasmine community north of Des Arc, Whittaker worked as a nurse over the years at Memorial Baptist Hospital in North Little Rock, Booneville Human Development, and was employed at Searcy Medical Center with Dr. Sydney Tate at the time of her death.

“We needed a way to pay tribute to her as a living memorial,” Donna Isaac, her twin sister, said. “She cared for so many people, even outside her job.

“Establishing a scholarship to help others seemed a good way to help other people do the things she did,” Isaac said.

“This scholarship does two good things,” Dr. Eugene McKay, chancellor, said. “It will provide a long-term memorial to honor the life of Doris Whittaker, and it



NICKIE AND DORIS WHITTAKER

will help many students get a college education. We also appreciate the family’s support of the university and its students.”

Born into a family of 10, Doris Whittaker spent years serving her neighbors and community through Christian ministries with her husband, Nickie Whittaker, of Griffithville. However, in the mid 1980s, both decided to attend trade programs at the former Foothills Technical Institute. Both of their sons, Nickie and Wesley, are alumni of ASU-Beebe.

“Doris and I were non-traditional students, and we couldn’t have made it through without financial aid,” Nickie Whittaker said, “Providing a scholarship for those in need, as we were, allows us to help others and pay tribute to her life.”

The scholarship will be endowed to pay tuition initially for one student per year to com-

plete the three-semester practical nursing program at Arkansas State University-Searcy, a technical campus of ASU-Beebe.

As the fund grows, Whittaker said, he hopes to fund scholarships for as many as possible. He will also be contacting friends, family and co-workers to enlist their help in donating for the principal for this scholarship.

“We’re so proud to help the family of Doris Whittaker honor her memory in this way,” Keith Pinchback, director of institutional advancement, concluded, “as well as help area nursing students who need some financial help in reaching their nursing goal through ASU-Beebe.”

For more information about contributing to the Doris Whittaker Memorial Scholarship or others through ASU-Beebe and its campuses, please contact the Office of Institutional Advancement at (501) 882-8334.



With this ring

Dana Diane Martin (2003) married Joshua Wade Winston Stewart on July 19, 2003, at Clearwater Missionary Baptist Church.

Jeri Elizabeth Lewellyn (2003) married Matthew Wayne Edwards on July 4, 2003, at the New Testament Missionary Baptist Church. Jeri is seeking a degree in nursing from ASU-Beebe and is employed at Arkansas Rural Water Association.

Kevin McGuirt (2003) married Katie Schultz on Oct. 11, 2003. at First Lutheran Church in Little Rock. Kevin is a 2003 graduate of ASU-Beebe with an Applied Arts degree in Ag Equipment Technology. He is employed by Norman Equipment Company in Damascus.

Amy Davis (2003) married Gabriel Trobis on Aug. 9, 2003, at the Beebe First Assembly of God church. Amy is a graduate of ASU-Beebe with an associate's degree in health science. She graduated from University of Central Arkansas May 2004 with a bachelor's in health science. She is currently employed at Central Arkansas Hospital.

Jessica Boyd (2004) married Mitchell Ward on Aug. 9, 2003, at the McArthur Assembly of God in Jacksonville.

Michelle Annette Free (1999) married Christopher Luke Hardin on Sept. 12,

2003, at the Nixon Flower Farm in Jacksonville. Michelle graduated from ASU-Beebe in 1999 with an Associate of Arts degree and a Bachelor of Science Education in Mathematics from UCA in 2001. She is a scheduler for the IC Corporation.

Cheri Lee Vandon (2003) married Donald Lynn Foster on Sept. 5, 2003, at Timber Ridge Lodge in Charlotte.

Nancy Amanda Liles (1998) married Chad Albert Slaughter on Sept. 20, 2003, at Eagleview Catering in Searcy.

Roy Bartley (2001) married Stephanie Danielle Kerr (2001) on Nov. 8, 2003, on the Lonoke County Courthouse steps in Lonoke.

Melissa Kay Richardson (2003) married Adam Ray Brown on Oct. 11, 2003, at the Beebe First Baptist Church.

James Jacob Wetsell (2001) married Mary Kathryn Horan on Jan. 3, 2004, at the Fellowship of Christians in Russellville.

Andrea D. Conyers (2003) married Andrew L. Hinds on Dec. 26, 2003, at the Union Valley Baptist Church in Beebe.

Tasha Tharp (2002) married Dustin Lindsey on Jan. 10, 2004, at New Life Pentecostal Church in Scott.



With this ring ...

Tasha Mishelle McCain (2003) married Corey Walter Tallent on Dec. 20, 2003, at the First United Methodist Church in Des Arc.

Davon Fry (2004) married Jason Lackie (2004) on Dec. 20, 2003, at Bradford First Baptist Church.

Brittany LeAnne Whaley (2004) married Jason Daniel Martin on Dec. 20, 2003, at Dogwood Methodist Church in Griffithville.

James Allen McElroy (2003) married Cody Renee Kelly on April 3, 2004, at New Bethel Missionary Baptist Church in Carlisle.

Jaclyn Hill (2004) married Dustin Adkins on May 29, 2004, at the home of Jim and Carolyn Hill. Jacklyn is an early childhood education major at ASU-Beebe.

Kimberly Sue Waller (2002) married Christopher Lynn Lacy on May 22, 2004, at Cabot United Methodist church.

Michael Dennis Beck (1989) married Kimberly Lane McCullough on April 3, 2004, at Antioch.

Michael Keith Wolfe (2003) married Kimberly Dale Kirkland on June 12, 2004, at Abbey House in Heber Springs.

Katrina D. Winters (2003) married Jacob B. Farris (2003) on June 5, 2004, at Union Valley Baptist Church in Beebe.

Cindy Chante Bowden (2003) married Jeffrey Michael Haynes on June 5, 2004 at the First Baptist Church in Bald Knob.

Jacob Park Cypert (2003) married Leslie Ann Hammond on June 12, 2004, at West Race Baptist Church in Searcy.

Brandye Garrison (2004) married Blake Ashenberger on March 19, 2004, at Park Avenue Baptist Church.

Stephanie Michelle Higginbotham (2000) married Thomas Berkley Reed on May 1, 2004, at West Race Baptist Church in Searcy.

Shannon Ray Webb (2003) married Jennifer Diane Miller on June 5, 2004, at Hopewell Primitive Baptist Church in Hopewell.

Development Council exceeds goal

The Office of Institutional Advancement and Development Council of Arkansas State University-Beebe has more than doubled its goal by raising more than \$103,000 during the last school year.

The Development Council endeavored in July 2002 to raise \$100,000 in a scholarship endowment campaign over the next two years beginning in July 2002.

"We the 20 members of the ASU-Beebe Development Council acknowledge the importance of education to our youth, our leaders for tomorrow and our posterity. We desire to endow scholarships which will be used to help our students, our communities, and our own quality of life," Dewitt Yingling, Development Council Major Gifts Committee chairman, said.

The scholarships will be perpetual, with the earned interest used to fund the scholarships, Keith Pinchback, director of

institutional advancement explained, and the rate of interest will determine the number of scholarships to be funded. The name of each donor and the amount of the donation will be prominently placed on a plaque in the Student Center, highly visible to the public.

The full-tuition (based on 12 hours) scholarships will be dispersed over a period of two semesters to applicants who fulfill the following requirements: those students entering sophomore year after completing 24 hours at ASU-Beebe; and maintaining a cumulative GPA of 2.5 during freshmen year of studies and a 2.5 GPA during first semester of scholarship. The ASU-Beebe scholarship committee will choose recipients.

For more information, contact the Office of Institutional Advancement by calling (501) 882-8334 or via e-mail at gkpinchback@asub.edu.

Development Council Members

Mr. Randy Busbea
Chairman
Mr. Dewitt Yingling
Vice Chair
Mr. Andy Anderson
Mrs. Doris Barnes
Mr. Hugh Burge
Dr. Ruth Couch
Ms. Letain DeVore
Ms. Cathy Eoff-Tiratto
Mr. Mike Fisher
Mrs. Laverne Hale
Mr. Marvin Jones
Mr. Garland Kirkpatrick
Mr. Garth Martin
Mr. Jerry Morgan
Mrs. Sheryl Priest
Mr. Roy Simmons
Ms. Melanie Taylor
Mr. Chuck Wisdom

Campaign for the Next Generation Contributors

Donation of \$15,000 or more
First Arkansas Bank and Trust
Mohela

Donation of \$6,000 - \$14,999
Community Bank
Dr. Ruth Couch
Letain DeVore
Regions Bank

Donation of \$2,001 - \$5,999
Doris Barnes
First Security Bank
Drs. Eugene and Judy McKay
Garth Martin

Roy Simmons
Jim Wooten

Donation of \$1,000 - \$1,999
Andy Anderson
Randy Busbea
Mr. & Mrs. Jerry Carlisle
Mr. & Mrs. H. M. Dodds, Jr.
Entergy - Searcy
Mr. & Mrs. Barry Farris
Cathy Eoff-Tiratto
Laverne Hale
Joe Hastings
Betty Hayes
John & Robin Hayes

Chuck & Wanda Johnson
Garland Kirkpatrick
Joe Park
Mr. & Mrs. Ben Pickard
Keith & Alana Pinchback
Nancy Shefflette
Simmons First Bank
Mr. & Mrs. Jack Simons
Dr. & Mrs. Chuck Welch
Dewitt Yingling

**Total Development Endowment
Scholarship for 2003-2004
\$103,506**

Abington Library provides guard e-mail access

The Arkansas State University-Beebe Abington Library, with the help of the university's advanced technology division, will provide e-mail access to Army National Guard members' families in the coming months.

The Beebe guard unit has been activated, and a local support group of those left behind have a way of staying in touch that has become easier to do through electronic mail, rather

than just the U.S. Postal Service.

Registered users may e-mail guard members through Army Knowledge Online, a password protected Internet site. Family members and friends, however, must first register on the AKO site, and the ASU-Beebe library staff has been trained by the advanced technology division to guide those interested through the process of registering to contact guard members.

Once registered, users can

access the e-mail through any Internet-accessible computer, however, the library will allow those without Internet access to use the terminals at the library during regular operating hours, Monday through Thursday 7:30 a.m. to 9 p.m., Friday 7:30 to 4:30 p.m., Saturday 8 to 1 p.m. and 2 p.m. to 5 p.m., and Sunday 1 p.m. to 5 p.m.

For more information, contact the Abington Library at (501) 882-8207.



Computer terminals in the Abington Library on the campus of Arkansas State University-Beebe are available to family and friends of the activated Army National Guard Unit of Beebe for e-mail access.

Annual Student Life Easter Egg Hunt



Wheatley Welch, daughter of Dr. and Mrs. Chuck Welch, celebrates her first Easter during the annual Easter Egg Hunt sponsored by the Office of Student Life on the lawn of Princess Hall for the children of faculty, staff and students. Below, Bailey Hinkle, granddaughter of Pam and Allen Hinkle, shows her spoils.



Grads hear from U.S. Senator Lincoln

Continued from Page 3

“At that moment, I began to dream about how our government could be more responsive to average, everyday Americans. Moreover, I began to dream about my own place in helping that to happen. When you begin to dream big dreams, hold on tight! You have no idea where those dreams will ultimately lead you.

“Finally,” Lincoln said, “never forget where you come from. I have been blessed in my life to go to places that I once only read

about in the World Book Encyclopedia. I’ve seen things that I never dreamed I’d see. And, I’ve met people that, even to this day, I never in a million years thought I’d meet. But, let me tell you, ladies and gentlemen, there’s no place like home.

“Never forget where you come from. Never forget the values that you’ve learned here – Arkansas values are world-class values. No matter how far away from home life may take you, you will never be in a more wonderful place,

you will never see more beautiful things, and you will never meet better people,” Lincoln concluded.

As she finished her address, Lincoln implored the graduates to live a life of service.

“Our communities need you, our state needs you, our nation and our world needs you,” she said. “In total, we need the skills you have learned here to be used to serve your neighbors, guide your communities, build your state, and lead this nation.”



Departmental winners at the annual student awards banquet were (front row, from left) Laura Boss, Sarah Sullivan, Caroline Carpenter, Jan Allen, (second row, from left) Kyoko Pierce, Aaron Crayton, Julie Chastain, and Brittney Wyatt. (Not pictured is James Vaughn.) The students were presented division awards for outstanding leadership and outstanding scholastic achievement in their major fields of study.

Several honored at annual awards banquet

Several Arkansas State University-Beebe students were honored at the annual ASU-Beebe Awards Banquet held recently at the university. The students were presented division awards for leadership and outstanding scholastic achievement in their major fields of study.

Selected for the English and Fine Arts Awards were Caroline Carpenter, a sophomore liberal arts major of Cabot, and Aaron Crayton, a sophomore liberal arts major of Jacksonville.

The Applied Arts/ASTI Awards went to Jan Allen, a sophomore liberal arts major of Ward, and James Vaughn, a sophomore John Deere Agriculture Technology major of Paragould.

Chosen for the Education and Social Science Awards were Laura Boss, a sophomore liberal arts major of Little Rock, and Sarah Sullivan, a sophomore liberal arts major of Romance.

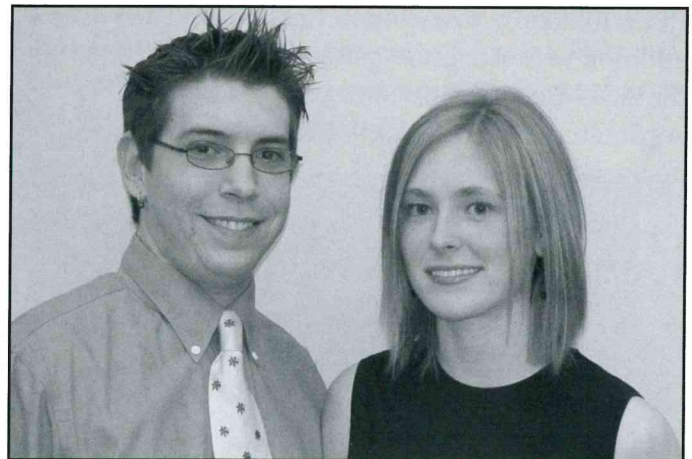
The Math and Science Division Awards went to Julie Chastain, a sophomore liberal arts major of Searcy, and Brittany Wyatt, a sophomore liberal arts major of Searcy. Kyoko Pierce, a senior computer systems technology major of Jacksonville, was awarded for the Arkansas State University at



HARVEY



KELLY



Arkansas State University-Beebe Citizenship Award winners Andy Isom (at left) and Misty Stewart were chosen by faculty and staff for their contributions to the campus in areas of education, activities and leadership.

Jonesboro programs at ASU-Beebe.

The Citizenship Awards, the university's most prestigious awards, went to Andy Isom, a sophomore computer systems technology major of Beebe, and Misty Stewart, a sophomore liberal arts major of Cabot.

Additionally, Lawanda Harvey, secretary in the Owen Center, was named positive staff member, and Michael Kelly, was named positive faculty member by the Leadership Council.

Farm complex has new greenhouse

Continued from Page 1

"We appreciate all that the Shurleys have done for us over the years."

In addition to the greenhouse, the Shurleys have donated to construct the Shurley Learning Center in the Student Center and have endowed a scholarship.

"When a student needs help, the Shurleys provide it," Keith Pinchback, director of institutional advancement, said.

Students began using the greenhouse this semester, and attendees toured the facility, which houses many types of flora, including row cotton. In addition to horticulture classes, the ASU-Beebe Department of Agriculture offers animal science coursework.

Harvest Fest Queen and Court



The student body selected its 2004 Harvest Fest royalty during the annual festivities in November. Julie Robinson (center), a sophomore ag business major of Greenbrier, was chosen Harvest Fest Queen. First runner-up was Laura Boss (left), a sophomore early education major of Little Rock, and second runner-up was Jessica Williams (right), a sophomore, business management major of Cabot. Donations of \$225 will benefit the Angel Tree Project.



Office of Institutional Advancement
P.O. Box 1000
Beebe, AR 72012-1000

**For more news, visit us online at www.asub.edu
or submit your news to rframe@asub.edu**