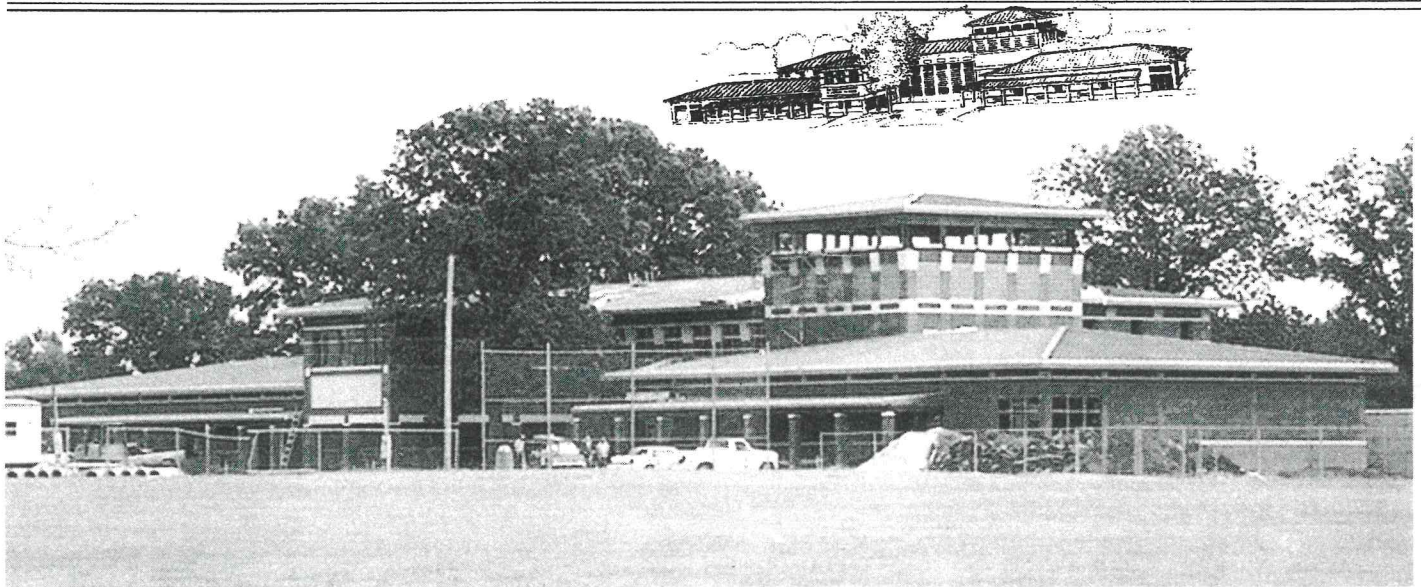


# ASU - Beebe

Volume 6

*MEETING THE CHALLENGE*

Summer, 2000



**FROM DREAM TO REALITY** – The new Student Center is expected to be completed by early fall. The \$5 million, 35,125 square foot structure will add a new dimension to ASU - Beebe's service to students and to the community.



**INSIDE**

Chancellor's Message	2
Alumni Association	3
Continuing Ed News	4
Advanced Degree Program	5
Lecture/Concert Series	6
Alumni News	7
Faculty/Staff News	10
Student Services News	15
ASTI News	16
ASU-Newport News	18
Special Thanks	19
ASU-Heber Springs	20

## Two New Degree Programs Will Be Offered Next Fall

ASU - Beebe, in conjunction with Foothills Technical Institute of Searcy, will offer associate of applied science degrees in paramedics and in early childhood education. Both degree programs will be offered for the first time this fall at ASU - Beebe along with its campuses at ASU - Newport, ASU - Heber Springs and Little Rock Air Force Base.

Students who wish to work toward the degrees can take general education and core curriculum at ASU - Beebe or at its satellite campuses, which will require about a year of study. Students would then complete the required courses, either in the paramedics\EMT field or in early childhood education, at Foothills Technical Institute.

The early childhood education program will prepare students to teach, administer or establish a day care center or family day home. The degree will also fulfill new mandates by the national Head Start program which requires an associate degree to be held by at least half of the teachers in a Head Start program.

The curriculum will consist of 27 credit hours of general education core curriculum, a three-hour computer course and the 35-hour early childhood curriculum at Foothills. Students completing early childhood study at Foothills will be eligible for Child Development Associate certification. The core

*Continued on page 3*



# Message from the Chancellor

## ASU - Beebe Partnerships Help Meet Regional Needs

ASU-Beebe has been reaching out to form new partnerships to help us better meet the needs of our service area. We have formed a partnership with Cisco Systems, Inc., the worldwide leader in networking for the Internet; we have become one of seven regional academies for Cisco in Arkansas, and we provide training and support for high schools and other Local Academies. Students who complete CCNA (Cisco Certified Network Associate) can often find jobs in the \$25,000 to \$35,000 range.



Chancellor McKay

ASU-Beebe has the only John Deere cooperative program in the state, one of 19 in North America. Students, sponsored by a John Deere dealer, get an associate degree in two years and are trained to do basic repairs on all types of John Deere equipment. Students are required to work for the sponsoring dealers during the summer vacations. John Deere provides us over a million dollars worth of lab equipment as it is needed each year.

In 1997 ASU-Beebe entered into a new expanded partnership with Arkansas State University to provide baccalaureate degrees on the Beebe campus. Now six bachelor's and one master's are offered. Last May, 67 ASU-Jonesboro students received their degrees at Beebe; six of these received a Master of Science in educational administration; 61 received bachelor's in agricultural business, business administration, technology, elementary education, and nursing. In the spring, 214 students were enrolled in the ASU-Jonesboro programs on the Beebe campus. More programs will be possible when Phase II of the Distance Learning Center is completed later this fall.

ASU-Beebe has formed partnerships with eight local schools to offer concurrent classes for 144 advanced high school students who want to get a head start on college.

Advanced high school students who do not have a full schedule in high school can take some college courses. Those students who take several college courses in high school may graduate

from college a semester earlier than their friends who took no college courses in high school. This may save parents several thousand dollars, depending on the college attended. Schools in this partnership last semester included Bald Knob, Bradford, Hazen, Lonoke, Riverview, Rose Bud, Searcy, and Vilonia.

The university will be better able to form partnerships and interact with our communities

when our current building projects are completed. The \$5 million Student Center will have food services and meeting rooms, enabling us to host groups and provide meeting space. The Student Center is in the center of the circle of academic buildings, symbolizing that students are central to our mission. Since students learn in and out of the classroom, we hope to provide more opportunities to help them develop their social skills and their ability to interact with other people.

The Distance Learning Center, which should be finished by November, will enable us to receive more compressed video classes from ASU-Jonesboro, to send more courses to our off-campus sites, and to do more concurrent courses with high schools. In addition, we will be able to produce more Internet courses.

The new pavilion at the farm will enable us to bring in various community and regional groups. The tornado destroyed six of seven farm buildings in 1999. This year, we are rebuilding two, a barn and a pavilion. The pavilion will permit demonstrations and group activities that have not been practical in the past. The new farm will be a much more attractive place than the former complex.

The \$3 million center for the arts at ASU-Newport has been completed and will provide many new opportunities for the university to interact with the community. In fact, the commencement in May filled the auditorium beyond its 600 seating capacity. The stage will provide additional theatrical opportunities as well as lectures and panel discussions.

With my support and upon President Wyatt's recommendation, the Arkansas Higher Education Coordinating Board voted last April to make ASU-Newport a stand-alone ASU campus as soon as it can get its own North Central Accreditation. We are working on the transition. Last year ASU-Newport was one of the most productive two-year colleges in the state. It produced more certificates of proficiency than any other college in Arkansas, and it produced more associate degrees than seven of the current stand-alone, two-year colleges.

In 1999, the Arkansas General Assembly and Governor Huckabee created a center of ASU-Beebe at Heber Springs. If the people of Cleburne County pass a sales tax in September, we will develop a masterplan for a new campus at Heber Springs.

George Fisher, the renowned political cartoonist for the Arkansas Gazette, has been named ASU-Beebe's outstanding alumnus for next year. He will be recognized at the annual meeting of the Arkansas Association of Two-Year Colleges at Little Rock this fall.

The ASU-Beebe Development Council raised \$280,000 to furnish the new Student Center. Several rooms have been named according to the wishes of the donors. The bookstore and the Student Center itself have not yet been named. We have recently reworked our web page. You may want to check it out at [www.asub.arknet.edu](http://www.asub.arknet.edu).

### ASU - Beebe

#### MEETING THE CHALLENGE

is published annually by the staff of Arkansas State University - Beebe. State Hall, Palm & Iowa Streets, Beebe, AR 72012-1000.

Bulk non-profit rate postage paid at Little Rock, AR.

ASU - Beebe  
P.O. Box H  
Beebe, AR 72012-1000

This publication is distributed free of charge to ASU - Beebe personnel, alumni, and supporters of the university.



# ASU - Beebe Alumni Gets Group Charter

The Alumni Association of Arkansas State University - Beebe is now official. Last April the Alumni Association received its charter and began with 144 members and plans are being made for ASU - Beebe's first Homecoming/Reunion.

The purpose of the newly formed Association is three-fold: to strive for the welfare of ASU - Beebe; to promote a mutually beneficial relationship between the university and its alumni; and to further the university's educational purposes. Former students, current students and friends of the university who are or have promoted the university's welfare are eligible for membership in the organization.

Carol Robertson has served as chairman of the preceding organization, the Former Students Committee of the ASU - Beebe Development Council. Under her direction, a steering committee consisting of Paul Ramsey, Laverne Hale, Roger Warren, Wilma Beard, Eva Burrus, and Jannette Minton, wrote the original charter and by-laws. The charter was passed by the Development Council at its April 13 meeting.

Robertson said that the next step is the election of officers and making plans for the Homecoming/Reunion (See story at right).

Several events were held during the past year. A trip was made to an ASU - Jonesboro football game for a tailgate party and to watch the game as a group, a bus trip was made to the new Alltel Arena, with a group of over 200 attending, for the ASU/UALR basketball games, and the organization held a dinner before the Count Basie Concert last November and worked with the Chamber of Commerce in the "Back to Beebe Bash."

Persons interested in joining the

Alumni Association may contact the Office of Advancement at ASU - Beebe, (501) 882-8255. Members receive a member identification card, invitations to all alumni events, announcements about the Lecture/Concert events along with other advantages as they are developed.

## Plans Underway For Special Alumni Activities

The Alumni Association charter membership will meet Oct. 14, 12:30 p.m., for an informal reception and a tour of the campus and the new Student Center if the facility is ready for such a tour.

Plans have begun for the Homecoming/Reunion for all alumni. The steering committee is looking for a date in April which will coincide with the annual ASU - Beebe Shakespeare Festival and student art show. Invitations will be extended to alumni Tess Harper, Glynda Turley and Billy Baker. The committee is looking at the possibility of adding special basketball and rodeo programs to the Homecoming/Reunion activities.

The annual bus trip to Jonesboro for the ASU-North Texas State football game is set Nov. 11 and will include the traditional tailgate party.

The Alumni Association is also trying to locate all former students. If you have a friend who is a former student and did not receive this newsletter, please ask them to send their name and address to: ASU - Beebe Alumni Association, P.O. Box 1000, Beebe, AR 72012.

If you would like to send your e-mail address and be added to the Alumni e-mailings, you may do so at [www.asub.arknet.edu/alumniassoc](http://www.asub.arknet.edu/alumniassoc).

## Need Information? Check ASU - Beebe Internet Web Page

Need information on ASU - Beebe? Perhaps you or someone you know would like to see a schedule of classes. Or maybe you would just like to know what's happening on the ASU - Beebe campus.

You can find that information and more on the new ASU - Beebe web page on the internet. The university's web address is:

[www.asub.arknet.edu](http://www.asub.arknet.edu)

Whether it's a class schedule, the Campus Update newsletter, e-mail addresses of faculty and staff, or admissions information, that and more are available on the ASU - Beebe web page.

---

## We Want To Hear From You

Have you received a promotion or started a new job, moved to another city, gotten married, had a baby, or any other event that friends and former classmates would like to know about? We would like to hear from you and publish your news in the next ASU - Beebe alumni newsletter. Drop us a note with the information to: Office of Development, ASU - Beebe, P.O. Box 1000, Beebe, AR 72012-1000.

## New Degree Programs

*Continued from page 1*  
curriculum courses completed at ASU - Beebe will also transfer to a four-year university in Arkansas if a student wishes to do so.

The paramedic program will also provide students with a general education core curriculum, like the one for early childhood education, then students will branch off into the paramedic field at Foothills. Students will complete the program with both paramedic certification and an AAS degree.

The need for paramedics has grown over the years, and beginning this year paramedics will be required by Emergency Medical Services at the state level to hold an associate of applied science degree.



# ASU - Beebe Enrollment Tops Record

Arkansas State University - Beebe's growth pattern that began more than a decade ago saw another record enrollment last fall when 2,117 students registered for the fall term.

The enrollment figure is an increase of 12 students from a year earlier and continues a growth trend that began in 1985 when ASU - Beebe's enrollment was 693 students.

In addition to its on-campus students, enrollment figures show that ASU - Beebe serves 338 students at its Little Rock Air Force Base branch and over 500 students at its Newport branch. ASU - Beebe also conducts college classes in area towns through its extension program through its center, ASU - Heber Springs.

"We are pleased that our enrollment reached a new high," said Dr. Eugene McKay, chancellor. "ASU - Beebe remains a regional university dedicated to meeting the educational and training needs of this region. "Our emphasis continues to be focused on the student," Dr. McKay continued. "We believe students come to ASU - Beebe for the high quality educational programs along with the individual attention from an excellent faculty and staff. Those traits have become a tradition at ASU - Beebe."

To help meet the demands of ASU - Beebe's continued growth, Abington Library has been expanded, new parking areas have been added, and construction on two new buildings is nearing completion. Phase II of the new distance learning center, the University Center, is near completion and construction is expected to be completed late this fall on the 35,125 square foot Student Center.



**CONSTRUCTION ON UNIVERSITY CENTER** is nearing completion with Phase II expected to be finished in November. The 17,703 square foot complex will house the advanced degree programs offered by ASU - Jonesboro along with ASU - Beebe's Continuing Education Division. The additional space will allow ASU to expand its four-year and master's degree course offerings at ASU - Beebe.

---

## Continuing Ed Puts ASU - Beebe Into the Community, Schools

ASU - Beebe's extension into the community is provided by its Continuing Education Division. That extension comes in several forms which includes college courses offered in area towns, college courses offered to outstanding high school students, computer short courses for all who would like to learn about computers and, as a community service, a host of leisure arts courses in such areas as photography, cake decorating, sign language and many more such offerings.

Over 500 persons enrolled in the non-credit computer training and community service classes last year. That figure included both individuals and business persons.

ASU - Beebe continues to offer college credit classes at Little Rock Air Force Base, Lonoke, Foothills Technical Institute, and at Heber Springs. Those offerings served over 900 students during the past fall and spring semesters.

College level courses are offered in eight area high schools. Courses offered include algebra, English, history, biology and others if there is enough demand to form a class. Last semester, courses were offered at Bald Knob, Bradford, Hazen, Lonoke, Riverview, Rose Bud, Searcy and Vilonia.

The Continuing Ed Division recently moved from its familiar office space in State Hall to the new University Center on the northern edge of the campus. Not only is there new office space, but there's additional computer lab space in the training center, complete with state-of-the-art equipment and furniture.

Becky Latting has joined the Continuing Ed Division as coordinator of community services, said Bob Lashlee, director. The Veterans Affairs Department has also moved to the new University Center and is under the direction of Delana Mote.



# ASU Advanced Degree Program Growing

The bachelor's and master's degree programs offered by Arkansas State University of Jonesboro at ASU - Beebe has completed its third year and in that span, the graduation list has grown more than tenfold.

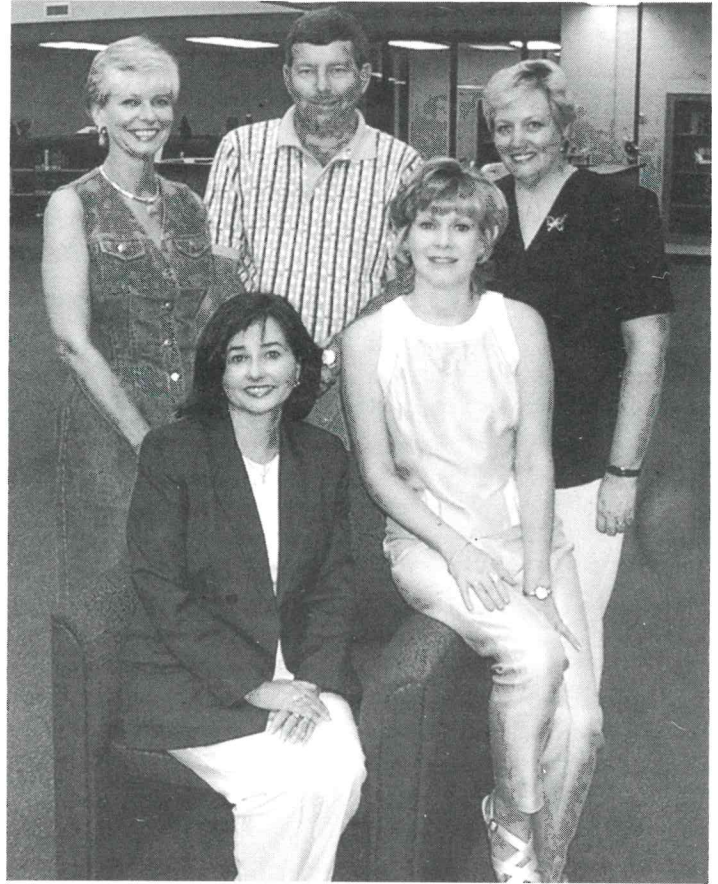
While the graduation list was growing from the five students who received bachelor's degrees in 1998 to 78 who earned advanced degrees last May, total enrollment was also showing a marked increase. Enrollment for the spring semester was 214 students working toward their bachelor's or master's degree. That figure almost doubles the initial enrollment of 120 students from three years ago.

While the ASU program was expanding, so were the facilities that house the advanced degree classes. Dr. Dianne Tiner, dean of advanced studies, and her staff moved into the new 17,703-square-foot University Center last January. University Center is located on the northern edge of the ASU - Beebe campus, between Arkansas State Technical Institute and the Applied Arts Building.

The ASU program offers four-year baccalaureate degrees in business administration, agriculture business, technology, elementary education, clinical laboratory sciences and a master's degree in educational administration. In nursing, there is an LPN to RN associate of applied science degree and an RN to BSN bachelor of science degree.

From the 2000 graduating class, 11 received academic honors during the ceremonies. Graduating Magna Cum Laude, with a 3.8 or higher grade average on a 4.0 scale, were Heather Chadwick of Newark, Michael Goodman of Jacksonville, Linda Pike of Jacksonville, and Ashlee Jolly of Bald Knob. Jolly was also named Outstanding Student of the graduating class.

Graduating Cum Laude, with a 3.6 or higher grade average, were Elizabeth Butler of Pangburn, Bristy Churchwell and Bonnie Jackson of Judsonia, Susan Lacy of Heber Springs, Doris Mansfield of Bald Knob, Sharon Van Horn of Floral and Scott Greenwalt of Carlisle.



**FIRST MASTER'S GRADUATES**—These five students became the first to receive a master's degree through ASU - Jonesboro's advanced degree program at Arkansas State University - Beebe. Receiving their master's degree in education were, seated left to right, Lynn Dardenne of Stuttgart and Mandy Watkins of Austin. Standing, l to r, Susan Luebke of DeWitt, Ray Gunter of Beebe, and Joy Graham of Cabot. The students completed their degree in 1999. Five more graduates received their master's last May along with 78 who received bachelor's degrees.

---

## Phi Beta Lambda Awarded In State Competition

ASU - Beebe's business club Phi Beta Lambda produced the top website in competition among the state's other PBL Chapters at the organizations annual State Leadership Conference held recently in Little Rock.

In addition to taking first place honors in the website competition, the ASU - Beebe chapter won second place

in the scrapbook competition and second in desktop publishing.

The website, created by club president Robert Doyal, will be judged in national competition at Long Beach, CA this summer. Several PBL members will be attending the national conference.

Two ASU - Beebe students placed in the desktop publishing competition.

Tammie Quick and Maria Martinez finished second among the 17 teams.

Doyal also became the first ASU - Beebe student to be elected to a state PBL office. He was elected reporter for the coming year at the annual conference.

PBL's award winning website can be seen at [www2.asub.arknet.edu/pbl/](http://www2.asub.arknet.edu/pbl/).



## Lecture/Concert Series

---

### Lecture/Concert Highlights Include Aces, Michael Murphey

The Lecture/Concert Series features an exciting line-up of educational as well as entertaining productions for the 2000-01 season. Again, the public has a unique opportunity to enjoy top rated talent at the Owen Center Auditorium for a seasonal ticket price of \$10 each or \$5 at the door per event.

Teddy Davis, coordinator of the series, announced that this year's concert season will offer a wide-variety of talent beginning with country music star Michael Martin Murphey in September and ending in April with the legendary 1950's group, The Four Aces. All concerts begin at 7:30 p.m.

The 2000-01 Concert Series and performance dates will be:

#### **Michael Martin Murphey September 29**

Award winning country music star Michael Martin Murphey will bring to the stage more than the performance of top selling songs. He will share his knowledge and appreciation of the life of a cowboy through his music as he combines talents of writing, singing, acting, and teaching to present "An Evening in the American West with Michael Martin Murphey."

#### **Opera A La Carte October 21**

Opera A La Carte will perform "The World of Gilbert and Sullivan" which features highlights and scenes from 10 to 11 of Gilbert and Sullivan operettas. These five performers have received national acclaim for the Gilbert and Sullivan performances which explains the success of their 30-year touring company.



*The Four Aces*

#### **St. Petersburg Ballet March 6**

The Saint Petersburg Ballet will offer a rare opportunity to experience the enjoyment of an internationally acclaimed ballet in small-town America. Founded in St. Petersburg, Russia by Konstantin Tatchkin, the ballet strives to stay true to the classical Russian Ballet style of the early 1700's.

#### **The Four Aces April 2**

Since the early 1950's, The Four Aces have earned an excellent world-wide reputation for quality of sound as well as showmen of the highest level. The quartet's music style continues its popularity as they tour and play such hits as "Sincerely," "Love is a Many Splendored Thing," and "Dream."

### Lecture Series

*Lectures are free, open to the public and are held at 1 p.m.  
in the Owen Center Auditorium*

**Craig Karges "Mentalist" September 26**

**Dana Beickert "Memphis Brooks Museum" October 27**

**Frank Jones "Storyteller" February 6**

**Keith Gisser "Herps Alive!" April 2**



# Alumni News

---

**Marc Harrison** of Judsonia is studying law and pursuing a career in politics. He recently spent five months in Washington D.C. for specialized training and worked as an intern with the program called "Wonders of Washington."

**Jim Wooten**, vice chairman of the ASU - Beebe Development Council, was honored as Citizen of the Year for his outstanding leadership and contributions to the City of Beebe after the 1999 tornado. After the storm, he disregarded his own losses and came to the aid of his community in handling immediate relief efforts. Wooten is owner of Exxon Tiger-Mart in Beebe.

**Jeff Dulaney** was one of only nine students from Arkansas to be accepted into veterinary school at Louisiana State University.

**Andy Anderson '49**, chairman of the ASU - Beebe Development Council, was among 63 Farm Bureau Leaders participating in the resolutions committee meeting last fall at the Riverfront Hilton in North Little Rock.

**Billy Jim Baker '69**, (a.k.a. Elwood Smooch) of Hillbilly Hoedown in Pigeon Forge, Tennessee, began his career at Silver Dollar City and has worked as a clown with the Ringling Brothers, Barnum and Bailey Circus. He has received many honors and was a nominee to be inducted into the American Circus Clown Hall of Fame.

**Billy and Brenda (Covington) Shurley '69**, founders of the Shurley Method: English Made Easy, were named ASU - Beebe's Outstanding Alumni for 1999 and were honored at the annual conference for the Arkansas Association of Two Year Colleges held in Little Rock.

**Mike and Carol Robertson '76**, co-owners of Warehouse Furniture in Beebe, experienced a fire last June that destroyed their business. They rebuilt at the same location and re-opened for business in March.

**Devona Brannon '78** is librarian at Cabot's Cherry Library.

**Glenda Turley '78**, well-known artist, published a new book this year, "Friends and Flowers."

**Alan McVey '81** was featured in the "40 Under 40" section of the August issue of "Arkansas Business." McVey began his political skills in his hometown of Des Arc, serving five terms on the city council before being appointed by Gov. Mike Huckabee as agriculture liaison in 1996. He currently serves on the National Board of the Council

of State Community Development Agencies, which works with Housing and Urban Development and Congress to influence funding and policies for community and economic development.

**Clark Osborn '83** served in Sinai, Egypt with the U.S. Army 101st Airborne Division Peacekeepers. Sgt. Osborn was an assistant site commander of the outpost.

**Christopher Knife '86** is Associate Director of Development at the University of Central Arkansas in Conway.

**Lloyd Hastings '97**, owner of Preferred Hematology Services Inc., built the business from three employees some 22 months ago and currently has 12 employees and grossed \$1 million last year. He was among the first graduates of the ASU programs on the ASU - Beebe campus and earned a Bachelor of Science in technical management. Hastings and his wife **Paula '92** have a son, **Nathaniel**, who is a member of Who's Who Among American High School Students and has accepted an academic scholarship to attend the fall semester at UCA in Conway.

**Billy Cunningham '94** was named Police Officer of the Year with the Cabot Police Department. Cunningham joined the Cabot Police Department in 1990, after having served in the Navy. He has been promoted to sergeant and serves as public information officer, training officer, and school and resource officer for D.A.R.E.

**Laverne Hale '96**, of the White County Farm Bureau, attended the Arkansas Farm Bureau statewide Women's Conference last April.

**Janet Pankey '96**, a graduate of ASU - Jonesboro in May 1999 with a BSE Degree in Physical Education, is a teacher and coach at McRae Public Schools.

**June Warren '96** graduated with honors from UCA in August 1998. She is currently pursuing a master's degree in biblical counseling from Trinity Seminary. She is employed full-time as a counselor at Care Link in Cabot and part-time at the Assembly of God Church in Jacksonville.

**Landon Hutsell '98** is a member of "By The Way," a new contemporary Christian rock band composed of five young men from the Searcy area dedicated to spreading the gospel of Christ to young people through their music. "By The Way" finished its first recording "In The Beginning" which consists of all original songs.

**Lateesha M. Fritts '99** of Bald Knob received the Susan Jones Rand Scholarship.

## Marriages

Katrina Ann Johnson, daughter of **Jerry Johnson '89**, married Rodney Paul Mimms on March 25, 2000 at the First Assembly of God Church in Searcy.

**Darren Healy Burrus '91** married Jennifer Rebecca Flack June 3, 2000 at McKendree United Methodist Church in Nashville, Tennessee.

**Shannon Dahlem '91** married John Kuhon March 11, 2000 at the First United Methodist Church in Searcy.

**Richard Aaron Martin '94** married Jamie Tennille Ellis on June 17, 2000 at the First Baptist Church in Paragould.

**Bryan Edward Duke '96** is engaged to Amy Nell Gray and the marriage is set for September 16, 2000 at Union Valley Baptist Church in Beebe.

**Greg Olmstead '96** married Meredith A. Williams on January 1, 2000 at the Little Rock Air Force Base in Jacksonville.

**Robbye E. Davis '97** married **Kevin W. Atkinson '94** on June 10, 2000 at the Searcy Faith Assembly of God Church.

**Misty Decker '97** married Jack Murdock on last August 21, 1999 at the First General Baptist Church of Heber Springs.

**Autumn L. Strickland '97** married Jeffrey Lynn Cauley on June 24, 2000 at the Lonoke Baptist Church.

**Wesley R. Palmer '98** married Leah C. Wallace on August 5, 2000 at the Park Avenue Baptist Church in Searcy.

**Samantha Allen Rhoads '98** married James Cody Hastings June 10, 2000 at the Church of Christ in Hope.

**Tammi Price '00** married Thomas J. Frame, son of Rosemary (Office of Institutional Advancement) and Charlie Frame on June 17, 2000 at 2 p.m. at the First Baptist Church of Cabot. The couple have a son, Tristen Jade Frame.

## Obituaries

**Bonnie Hale Branson '68** daughter of Laverne Hale, died January 2000.

**Eugene "Gene" Dale Ramsey '68** was killed in a car wreck March 2000.

**Justin Reed Story '00** of Bee Branch died May 2000. Born in 1979, he was the son of Randal Story and Elizabeth Lane and graduated from Southside High School. He worked for Clinton Wal-Mart while attending ASU - Beebe.



### Five ASU - Beebe Teachers Picked For Who's Who

Five ASU - Beebe instructors have been selected for Who's Who Among America's Teachers. Dr. Hazel Dickey, Dr. Maris Fletcher, Roger Moore, Lynn "Buddy" Baker and Kathy Pillow have been selected for the national award.

The award is given to teachers chosen by former students for their contributions to the university and its students. Only high school and college students who have been cited for academic excellence themselves in Who's Who Among American Students or to The National Dean's List are invited to nominate a teacher. Only 2.5 percent of the nation's college teachers are honored with this award.

Dr. Dickey, who retired in July, taught business at ASU - Beebe, and Dr. Fletcher teaches world literature, mythology, English and French. Baker teaches medical laboratory technology, Moore teaches accounting, economics and computer information systems, and Pillow teaches in the education department. Their names will appear in Who's Who Among America's Teachers, a publication dedicated to the recognition of the country's premier teachers. The book will be distributed to schools and libraries across the nation.

### Shurleys Named Outstanding Alumni

Billy and Brenda Shurley of Cabot were named Arkansas State University - Beebe's Outstanding Alumni for 1999. The couple was recognized at the annual conference of the Arkansas Association of Two Year Colleges held in Little Rock.

The Shurleys developed an innovative program to teach English in the public schools which has been adopted by hundreds of schools in 40 states.



**HARVEST FEST QUEEN AND COURT**—Tiffany Wood, center, of Cushman was crowned Harvest Fest Queen for 1999 during the annual festivities at Arkansas State University - Beebe. Miss Wood, a sophomore at ASU - Beebe, represented the Agri Club in the contest balloting. Voted first runner-up was Rachel Roy, right, of Little Rock and second runner-up Tina Ferguson, left, of Greers Ferry.

---

## Durham Selected As A Sam Walton Fellow

Rhonda Durham, instructor of business, has been named a Sam Walton Fellow.

As a Sam Walton Fellow, Durham will lead a team of ASU - Beebe students which is seeking to learn more about the free enterprise system and to promote it through community involvement. The program, entitled Students in Free Enterprise (SIFE), is a nonprofit organization established in honor of the late Wal-Mart founder, Sam Walton.

The mission of the SIFE program is to provide the tools to learn the free

enterprise system in a real working situation. College students will have the opportunity to develop leadership, teamwork, and communication skills through learning, practicing and teaching the principles of free enterprise.

SIFE students can take what they have learned of the free enterprise system back to their communities to teach concepts such as budgeting, accounting, and supply and demand along with other aspects that make up free enterprise.



# Dr. Dickey Ends 32 Years Of Teaching

Dr. Hazel Dickey, professor of business and chair of the Applied Arts Division at Arkansas State University - Beebe, recently announced plans to retire after 32 years at the university. In reflecting on a major chapter in her life, Dr. Dickey noted

"ASU - Beebe has been like family and I've enjoyed the contact with students, faculty and staff over the years. But I am also looking forward to retirement and setting my own schedule. It's like a friend once said, 'Whatever I want to! Whenever I want to!'" she chuckled.

Dr. Dickey came to ASU-Beebe after teaching in public schools for six years and began her collegiate career as a part-time business instructor in 1968 and full-time instructor in January of 1969. Before she was an instructor, Dr. Dickey also worked as a part-time secretary, library clerk at night and typed grades and helped with registration in the Registrar's Office. "During those early years, I appreciated the opportunity to better understand the inner workings of the university," stated Dr. Dickey.

In 1984, Dr. Dickey was named chair of the Applied Arts Division. She remembered the many physical and academic changes that the university has experienced over the years and recalled the 26 years the business division was located in State Hall. She shared an office on the second floor with three other faculty and two student workers and laughed as she thought of the fire escape of the earlier days of the building, "There were no fire escape stairs, just a simple pulley and rope attached to the inside of a very small window. I was glad I never had to use it." Understandably, the addition of the Applied Arts Building in 1994 was a welcome physical change to the campus.

Under Dr. Dickey's leadership, Applied Arts, which is comprised of both the agriculture and business programs, has continued to expand and



*Dr. Hazel Dickey, left, goes over a point with ASU - Beebe student Mindy Loyd.*

stay current with technology and academic changes, enabling students to remain competitive in the workforce. "One of the great rewards of my job is to see former students become successful in the business world," stated Dr. Dickey. During her term as chair she developed the associate of applied science degree in business technology, a career-oriented program with six options to meet a variety of student needs. Development of this program required extensive scanning of local business and industry. She worked out a cooperative agreement with Foothills Technical Institute of Searcy to provide some of the course work for the program. She has also been active in Tech Prep as well as supervising a number of interns in local business and industry each semester.

Additionally, Dr. Dickey has been active in state, regional, and national business education organizations and has served as presenter at many of the conferences. She has had several articles

published in *Arkansas Business Educator* and has served as president of the Faculty Association as well as several civic and professional organizations. She is a lifetime member of the ASU Alumni Association, serving a term on the Board of Directors and a term as president.

Dr. Dickey has taken a strong interest in advising and chaired the Advising Committee for several years. Under her direction, the advising procedures were organized and a comprehensive advising handbook was produced for faculty and staff. Dr. Dickey's secret to success, however, may be in her positive attitude in directing students and working with others. She has been led by a personal philosophy to "treat everyone fairly and with respect," and has challenged students to "use their abilities to the fullest."

Growing up in Marion, Dr. Dickey said she knew at a young age that she

*Continued on page 13*



# Faculty & Staff News

---

**Brian Berry**, Student Life, presented at the Association of College Unions International Annual Conference in New York City, the Mississippi/Arkansas Two-Year College Chief Student Affairs Officers Conference, and the Ark. Council on Student Services.

**Debbie Bratton**, Learning Center, presented at the Arkansas Mathematics and Science Leadership Conference, the Arkansas Association of Two-Year Colleges, and the National Council of Teachers of Mathematics Regional Conference. She also presided at the Annual Meeting of the National Council of Teachers of Mathematics. She serves as second vice president to the Beta Beta Chapter of Delta Kappa Gamma Society International and was selected to serve as the treasurer.

**Jo Howell**, Learning Center, served on the program committee at the National Tutoring Association Annual Conference.

**Lea Marshall**, counselor/disabilities, presented at the Department of Human Services Agency Fest.

**Daphne Perkins**, Learning Center, was ASU - Beebe's institutional representative for the Arkansas State Employee Association Outstanding State Employee.

**Ben Pickard**, vice chancellor for Student Affairs, serves as chair of the Arkansas Department of Higher Education Financial Aid Advisory Committee, and as co-chair of the Mississippi/Arkansas Two-Year Chief Student Affairs Officers. He presented at the Mississippi/Arkansas Two-Year Chief Student Affairs Officers Conference and at the Innovations 1999 Conference in New Orleans. He also serves on the Executive Committee of the Arkansas State University Alumni Association Board of Directors.

**Dena Prior**, Financial Aid, currently serves as the secretary/treasurer of the Arkansas Association of Student Financial Aid Administrators and will continue at that position until 2002. She recently received the annual Positive Staff Award from the Leadership Council for outstanding service and dedication to ASU - Beebe students.

**Cindy Sharp**, Financial Aid, served on the Arkansas Association of Two-Year Colleges Board of Directors as chair of the Classified Division in 1999.

**Tonia Spradlin**, Learning Center, presented at the Arkansas Mathematics and Science Leadership Conference and the Arkansas Association of Two-Year Colleges. She also serves as the campus liaison for the Arkansas Association for Developmental Educators.

**Mark Taylor**, Guidance Services, serves as Two-Year School Representative for the Arkansas Association on Higher Education and Disability, president-elect of the Arkansas Association of Two-Year Colleges Board of Directors, and was state secretary of Arkansas ACT Council. He presented at the Ark-ACRO Conference, the Northwest Arkansas Counselor's Association, the Arkansas Association of Two-Year Colleges Conference, and at the Innovations 1999 Conference in New Orleans.

**Lisa Thomas**, counselor, presented for the UCA Department of Counseling Psychology.

**Tina Walton**, Student Affairs, served as chair-elect of the Classified Division of the Arkansas Association of Two-Year Colleges Board of Directors.

**Allen Bailey**, Ag Tech, graduated in May with a Bachelor's degree from ASU - Jonesboro.

**Les Battles**, chemistry, received his Doctorate in Education and Education Leadership.

**Sarah Calhoun**, library, and **Susan Wilson**, admissions, both graduated in May with Associate of Art degrees.

**Phil Petray**, social sciences, and **Buddy Baker**, MLT, worked with the sixth grade students at the Beebe Middle School Civil War history project. Petray presented interesting facts about Arkansas involvement in the war. The students were impressed to learn that Arkansas had more Civil War casualties than any other state. Baker brought numerous items from his personal collection of Civil War weaponry and clothing and demonstrated how a soldier would carry a musket and line for battle.

**Barry Farris and Chuck Wisdom**, agri, participated in the Southeast and Northeast Area dairy cattle judging at Lonoke with 32 schools participating. Wisdom and several agri students attended a livestock judging in Fort Worth.

**Melissa Meador**, biology, held a workshop last summer at White County Medical Center for high school students interested in medicine.

**Bill Long**, English and fine arts, traveled to Europe and toured London and several area museums. He judged the Barrett Hamilton preliminary art competition at Lonoke Elementary, the art contest at Lonoke County Fair and co-judged with **Mona Vaden** the Barrett Hamilton exhibit. Long also gave presentations on Egypt for Pangburn High School and Beebe Kiwanis

Club and attended the Art Educators Convention at Little Rock.

**Mona Vaden**, art, directed an exhibition of ASU - Beebe student works at the AATYC meeting. She has directed student tours to the Decorative Arts Museum and the UALR art gallery. Vaden and the Art Club provided the decorations for the Harvestfest dance.

**Don Davis**, music, attended the Arkansas Choral Directors Association to which he is founder. He also judged the large choirs contest of Central Region Choirs at Searcy and attended the meeting of the American Choral Directors Association at Oklahoma City.

**Mike Kelly**, English, attended a conference on student-centered learning at Mid-South Community College. The topic of the conference was student-centered learning in retention.

**Robin Hayes** was hired as coordinator of enrollment management which focuses on recruiting and retention strategies.

**Keith McClannahan**, ASTI, represented ASU - Beebe at Axiom's "state of the company" meeting.

**Sandra Adams**, CST, visited colleges at Black River and Petit Jean to update information on the Cisco program.

**Sandra Adams, Phil Hart and Bill Carpenter**, ASTI, trained for Cisco III and IV and Adams gives Cisco II training.

**Suzanne Patterson**, English, emphasized writing across the curriculum by inviting instructors from other academic areas to lecture her classes on the types of writing required in their courses.

**Maris Fletcher**, English, served as a judge for the essay competition for White County Creative Writers.

**Rodney Williams**, drama, was elected director of Region II of the Arkansas Speech and Communication Association and directed ASU - Beebe's entry in the Arkansas College Theatre Festival. The play entry received commendation for its artistic merit and social significance with several students receiving individual awards for acting and for technical merit.

**Linda Allee**, math, served as a registrar for ArkADE meeting held last fall.

**Hazel Dickey**, applied arts, and **Shirley Powell**, business, attended the Arkansas Business Educators Association meeting last fall.

**Roger Moore, Bob Mitchum, and Jack Raber**, applied arts, attended the Federal Reserve seminar last fall.



# Farris Named To Head Applied Arts Division

Barry Farris, assistant professor of agriculture, has been named chair of the Division of Applied Arts. The Applied Arts Division is comprised of the agriculture and business education departments.

Farris joined ASU - Beebe in 1984 as an agri instructor and was named head of the agri department in 1995. His appointment as division chair was effective July 1.

Farris received his associate degree from ASU - Beebe and, as a student, was selected for one of the university's highest awards, the Citizenship Award. He earned his bachelor's, master's and specialist's degrees from Arkansas State University of Jonesboro.

Earlier this year, Farris was recognized by the National Future Farmers of America for its Honorary American FFA Degree.

The degree is the highest national honorary award presented by the FFA and recognizes those who greatly contribute to the advancement of agricultural education and provide outstanding service to their local program and community.



*Barry Farris*

This year, nationally, 90 supporters of agricultural education were nominated to receive this prestigious degree.

Farris was nominated by the Arkansas State FFA Association for his contributions that significantly impacted agriculture education and FFA at the local and national levels.

## Fast-Track Program Will Allow Degree In 14 Months

Arkansas State University - Beebe has initiated a fast-track degree program which will give students the opportunity to earn an associate degree in 14 months.

Under the new program, students may take ASU - Beebe summer classes followed by fall and spring semesters, then more summer classes to complete an associate degree in 14 months. The regular associate degree plan requires two years to complete.

"This rapid pace program will allow a student, if he or she begins during the summer, to be ready for their junior year at a four-year university by the fall of the following year," said Dr. Ruth Couch, vice chancellor for academic affairs. "The program is for students who score well on the ACT test and are not required to take developmental courses," Dr. Couch added.

Students may begin the program by completing 12 college credit hours during the first two summer terms, six hours in each term. Students may then complete 19 credit hours during the fall term and 18 hours during the spring term. The fast-track degree program may then be completed the following summer and the student will be ready for his or her junior year.

---

## Faculty & Staff News

**Chris Boyett**, math, attended distance learning training in New Mexico.

**Mike Hammond**, social sciences, served as a convener in a discussion session at the Arkansas Association of College History Teachers.

**Jeannie Lindsey**, education and social sciences, served on the Arkansas Early Childhood Education Board.

**Bob Shain and Gary Holland**, physical education, attended the AAPERD conven-

tion at Orlando and the Arkansas Association for Health, Physical Education, Recreation, and Dance at Eureka Springs.

**Kathy Pillow**, English, co-presented a team building workshop for State Technical Institute at Memphis and Shelby State Community College to help prepare these institutions for merging. She also presented a session on diversity at the AATYC meeting.

**Ashley Davis** was named program coordinator at the Little Rock Air Force Base.

**Bob Lashlee** attended a video streaming conference at Oklahoma State University.

**Debbie Beeman Bratton**, Learning Center, married Dr. George Nelson Bratton on September 4 by Rev. Phil Hathcock.

**Holly Young**, English, married Dr. David Matthew Young on June 3 at St. James Catholic Church in Searcy.

**Kathy Pillow Price**, English, married Garrick Price on May 13 at Beebe First United Methodist Church.



## New Programs Designed To Enhance Education

During the summer, ASU - Beebe initiated a summer theatre program for area youth. The children's theatre troupe, entitled *Star 2000*, is sponsored by the Department of Speech and Theatre and is designed for students ages 8-14.

*Star 2000* was held July 10-29 in the Owen Center auditorium. During the three-week program, participants studied makeup, worked on costumes, and designed and built sets and props. Each youth was also cast as a character in a presentation based on Graeme Base's best-selling children's book, "The Worst Band in the Universe."

### International Studies

It is now possible to receive an associate of arts degree with international studies as an area of emphasis. Attention has been called to this possibility in order to encourage students to consider it in making plans for careers in foreign affairs, foreign language, or other related areas.

Several new courses that support international studies have been added to the curriculum. Faculty members are being asked to include international issues in a variety of academic areas, for example, nutrition and environmental studies. An international club meets regularly on campus, and a debate club has been formed which will include cross-cultural and international topics. A trip to Europe is scheduled for May 9, 2001.

### The Learning Concept

Arkansas State - Beebe and Arkansas State at Newport are in the process of becoming learning-centered institutions rather than teaching-centered institutions. This movement in higher education emphasizes that student learning is the most important aspect of



**OUTSTANDING STAFF MEMBER**—Carolyn Powers, head librarian at ASU - Beebe, was selected outstanding staffer for 1999 for exemplary service during the year. Above, Mrs. Powers is honored at the annual conference of the Arkansas Association of Two-Year Colleges. Dr. Ed Franklin, executive director of the AATYC makes a presentation to mark the occasion.

an institution, more important than other more traditional measures. The learning college is designed to create substantive change in the learners and place them central to the process, offering as many options as possible. Dr. Terry O'Banion, president of the League for Innovation in the Community College, was featured speaker for the fall pre-session faculty conference. A campus committee is following up the movement toward the learning-centered emphasis.

### Service Learning

Another movement that is significant nationally is service learning. Based on the idea that students learn best when they are deeply involved, it combines course work with service projects designed to fill needs in the community. A key element in service learning is reflection upon the service experiences, so that learning is related to information gained in the classroom setting. Rhonda Durham and Holly Young have cooperated through their desktop publishing and English courses to produce a brochure for United Way. The desktop publishing

class prepared a number of items for other groups such as scouts and local businesses. Mrs. Durham has also organized a Students in Free Enterprise (SIFE) team to expand involvement with service learning.

### Dr. Wicker Chosen Outstanding Faculty Member

Dr. Vicki Wicker, associate professor of psychology, was chosen to represent ASU - Beebe as Outstanding Faculty Member at the October meeting of Arkansas Association of Two-Year Colleges.

Dr. Wicker assisted in the development of the associate of applied science degree in early childhood education, which is being offered in cooperation with Foothills Technical Institute. She has been instrumental in the development of the cohort group, in which students are scheduled together for four courses so that they can develop support groups and can engage in cross-disciplinary learning.

She has also been helpful in the establishment of the four-year programs on the Beebe campus.



### Two Named To Development Council

Two new members have been named to the ASU - Beebe Development Council. Doris Barnes of Beebe and Yolly Steedtibold of Jacksonville will serve on the Council.

Mrs. Barnes was head librarian at ASU - Beebe for 42 years before her retirement in 1983. Currently, Mrs. Barnes is emeritus head librarian for ASU - Beebe.

Mrs. Steedtibold is an ASU - Beebe alumnus and a successful business woman in Jacksonville. She is executive broker of Parkway Realty and co-owner of Chopstick Restaurant, Bangkok House Restaurant and Lotus Blossom Restaurant. Mrs. Steedtibold recently started her own construction business.

### Pickard Selected For Mossie Richmond Leadership Award

Ben Pickard, vice chancellor for student affairs, was presented the Dr. Mossie J. Richmond, Jr. Outstanding Leadership Award at the annual meeting of the Arkansas College Personnel Association held in Hot Springs.

The award is given to a student affairs professional who has made outstanding contributions in the field of higher education. The recipient must have also demonstrated a dedication and involvement in the education community and must have given years of service to the profession and to the Arkansas College Personnel Association. Pickard has been an active member of the organization for over 20 years, serving as president in 1986.



**TOP AWARD WINNERS**—Michelle Bell of Jacksonville and Jason Rowland of Hickory Plains were presented Arkansas State University - Beebe's highest awards, the Citizenship Award, at the university's annual awards banquet. The Citizenship Award is not only for academic achievement but also for contributions to the university, participation in co-curricular activities, and potential for future success.

### Dr. Dickey Retires From Teaching

*Continued from page 9*  
wanted to be a teacher. She credits her career decision on the influence of many dedicated and caring teachers. "Teaching is an opportunity to make a difference in someone's life," stated Dr. Dickey and she further challenged business leaders and teachers to "strive to be a positive role model in business - you never know who's watching."

Dr. Dickey commented on the changes she has seen over the years, "Students today are more challenging to teach because they are pulled in so many directions such as work and family. However, higher education continues to fill an important 'niche' in

the student's life and serves as a bridge to many opportunities," stated Dr. Dickey.

Twice-named Who's Who Among America's Teachers and receiving the ASU - Beebe Positive Teacher Award were the greatest personal highlights of her career. Both awards were meaningful because she was nominated by her students. She and her husband Frank, who also recently retired from teaching, were thrilled to learn that both received Who's Who Among America's Teachers last spring, the second time for her and his first. Dr. Dickey remarked that sharing this honor "seemed a fitting culmination to both our teaching careers."



## 12 Selected For Memorial Scholarships

Twelve ASU - Beebe students have been awarded memorial scholarships, departmental and private donor, for the fall term. The recipients and their scholarships are:

### **William H. Owen Jr. Scholarship**

Sonja Turkia of Cabot has been selected for the 2000-2001 William H. Owen Jr. Scholarship. Turkai, a high school graduate from Finland, is majoring in business management and plans to pursue a bachelor's degree in business and computer information systems. She is a member of the Business Club/PBL and Gamma Beta Phi. Turkia serves as secretary of the International Club and was selected ASU - Beebe's Academic All-Star and will represent the university in the Arkansas Two-Year College Association's competition for statewide honors.

### **Linda Jo Welch Scholarship**

Three area students were awarded the Linda Jo Welch Memorial Scholarship for the 2000 spring semester.

June Morgan of Austin, Racheal Murrison of Cabot, and Aletheia James of Lonoke were selected by the business faculty on the basis of their educational and occupational potential. Morgan is a business administration major, Murrison is majoring in computer information systems and James is a business technology major.

### **England Challenge Scholarship**

Nancy Alred of Quitman was selected as the 2000-2001 recipient of the England Challenge Scholarship.

The scholarship is awarded to a student who plans to go into teaching. Alred is a member of Gamma Beta Phi and Future Educators Club. She is also a

## Two New Scholarships Endowed At ASU - Beebe

The ASU - Beebe Scholarship Fund has received a financial boost with two endowments to the program.

The E.H. "Doc" and Ruth Abington Scholarship has been established at ASU - Beebe with a \$10,000 endowment. A one-year scholarship will be awarded to an ASU - Beebe student who meets certain specified requirements.

Regions Bank has contributed \$1,000 to the scholarship program in the name of Wayne Hartsfield. Hartsfield, a bank executive, is a longtime supporter of ASU and ASU - Beebe and has served leading roles in various university programs.

The scholarship is designated for a White County student who meets certain specified qualifications.

substitute teacher. After completing her degree at ASU - Beebe, Alred plans to earn her bachelor's degree in elementary education and master's degree in media.

### **R. V. Powell Scholarship**

Josh King of Mountain Home, Kara Galloway of Romance, Joni Fason of Mt. Vernon, and Leslie Morrison of Greenbrier have been awarded the R. V. Powell Scholarships for the 2000 fall semester.

King was FFA vice president at Mountain Home High School and judged and exhibited livestock at the state and district level. He attended the National FFA Convention and plans to major in agriculture education.

Galloway attended the National FFA Convention and served as FFA secretary at Rose Bud High School. She has judged livestock at both district and state levels and competed in Future Business Leaders of America at the district and state levels. She plans to major in agriculture and pre-veterinary.

Fason served as FFA reporter at Mt. Vernon-Enola High School where she served as a district judge three years. She was a member of FBLA, Beta Club, FHA, Spanish Club, Journalism, Science Club and played sports. She was freshman class president and received numerous agri, academic and sports awards. She plans to major in agri-business.

Morrison was a FFA livestock judge at Greenbrier High School and received several FFA awards, including Star Greenhand, Showing Lamb, State Purple Circle Club, and State Fair Lamb Showmanship. She was a member of the fast pitch and varsity softball teams and received a driver's education award. Morrison plans to major in agriculture.

### **Denver E. Nettles Scholarship**

Benny Carlton of Shirley, Wayne Fulmer of Des Arc, and Laura Aaron of Altheimer, have been awarded Denver E. Nettles Scholarships for the 2000 fall semester.

Carlton was president and secretary of Shirley High School FFA and was active in judging and competitive activities. Carlton received the Greenhand and Chapter degrees and plans to major in agriculture education.

Fulmer was a member of FFA, Student Council, Boys State, Drama Club, FTA, Spanish Club, was All-District in football and competed in other sports. He plans to pursue a liberal arts degree.

Aaron was junior class president at Altheimer-Sherrill High School. She also served as freshmen class president, sophomore class treasurer and was a member of the National Honor Society as well as a honor student. Aaron plans to major in pre-veterinary.



# Student Center A New Dimension For Student Life

It has been a busy and eventful year for Student Affairs at ASU-Beebe. Construction on the new Student Center is progressing well and plans are to move into the new facility this fall. The Student Center will bring new responsibilities and changes to Student Services. Brian Berry has been assigned the responsibilities of director of student life and, as part of his new position, will oversee Student Center operations.

The **Learning Center** tutored 2,157 students last year. These students were enrolled in more than 900 separate sections of courses in all academic divisions. Students from ASU - Beebe, the Heber Springs Center, the Little Rock Air Force Base, ASU-Newport and ASU University Center attended the Learning Center 16,343 times for individual assistance. The Learning Center has expanded its resource holdings to include over 700 videos, 250 software programs, 100 audio cassettes, and all current ASU-Beebe texts with study guides along with many of the ASU Jonesboro support materials.

The **Counseling Center** had another productive year with over 3,000 contacts with students, prospective students, alumni, faculty, staff and community persons. Special programs in classes and at specially scheduled times on resume development and career planning, conflict resolution, self-esteem, stress management, healthy relationships, substance abuse, college success, disability issues were well received.

The counseling staff has also been active on campus committees including academic advising, outcomes assessment, disability, North Central, and global awareness. Counselors also remain active in student satisfaction research, and coordinated the "Connections" quality service training.

The **Student Financial Aid Office** provides financial aid assistance to ASU-Beebe, Little Rock Air Force Base, Heber Springs, ASU-Newport, and ASU University Center students. In the 1999-2000 academic year 1,086 financial aid applications were processed electronically. In addition, there was a significant increase, 19 percent over last year, in financial aid awarded to students. Some 1,254 students received financial aid assistance totaling nearly \$3.4 million.

During the months of October, January and February, the financial aid staff presented 13 financial aid workshops to area high school students and their parents covering all the financial aid programs. Also, the ASU-Beebe Financial Aid Office in conjunction with the ASU-Beebe Admissions Office conducted a workshop in February for area high school counselors providing information about financial aid and admission requirements.

**Student Activities and the Leadership Council** had another successful year providing co-curricular activities and leadership development opportunities for students. Some 2,540 students participated in student activities events during the academic year.

The Leadership Council continued their effort to make all students feel welcome by sponsoring programs for students with families as well as programs for traditional age students. There are now 18 registered student organizations chartered on campus offering involvement opportunities for all students.

The **Upward Bound** program had a total of 52 participants from 13 school districts during the 1998-99 project year. Upward Bound provides area high school students with academic instruction and tutoring,

counseling, cultural experiences, self-esteem activities, career awareness, college preparation, and academic advisement on 26 Saturdays during the academic year, and on an expanded basis during a six-week residential program. The retention rate of students in the program was 87 percent for the year.

Nine seniors enrolled in college courses on campus during the 1999 six-week summer program and attained an average GPA of over 2.70. Seven of the 13 Upward Bound students who began college in 1997 are now juniors. Ten of the 14 seniors from 1998 are now sophomores, and 8 of the 11 seniors from the 1999 group are college freshman. Six of the eight 1999 seniors who attended college attend ASU-Beebe. Twenty-four new students were chosen to join the program for the 1999-2000 year.

The **Residence Halls** were near capacity with 124 students living on campus. The halls saw a major improvement with the installation of carpet in the rooms and hallways over the summer.

**Campus Police** again reported no serious crimes on campus for the year. Campus parking underwent several changes and disruptions due to campus construction. The parking identification system will change to vehicle visor decals for the upcoming academic year. Parking usage on campus continues at a high level with over 3,300 registered vehicles on campus.

The **Lecture/Concert Committee** sponsored another successful season of concert productions that included: Buddy Holly and the Crickets, Count Basie Orchestra, Quapaw Quartet, Allegro Chamber Trio, Mr. Jack Daniel's Silver Cornet Band. Lecture speakers included: Ellen Gootblatt on "Relationships", Barry Drake on "Rock & Roll in the 80's" and Robert Hastings on "UFO's".



# ASTI Economic Development Focuses On Training

The Economic Development Office at ASU-Beebe continues to be heavily involved in business and industry training. During the past academic year the office conducted over 10,800 contact hours of training for 357 students representing more than 120 companies from around the state.

Most of the training was in the advanced manufacturing technology of industrial automation with 2 three-day courses being offered, one in Introductory Programmable Logic Controllers and the other in Advanced Programmable Logic Controllers. Eight Introductory and four Advanced PLC classes were taught during this time period.

The specialized training was provided using portable Allen-Bradley Programmable Logic Controllers and ASU-Beebe's customized curriculum. The equipment has added a new dimension in providing necessary programming and troubleshooting skills for today's industrial maintenance personnel.

Arkansas State Technical Institute provides approximately \$160,000 worth of equipment to the PLC classes. The instructor is Chuck Cole, a nationally recognized and award winning professional engineer. He is an associate professor in Industrial Automation at ASU-Beebe and owns Cole Engineering in Little Rock.

Many Arkansas companies benefit from the Existing Workforce Training Program. The program makes state grant money available to industries in SIC 20-39 to help defray the cost of employee training. This program is jointly administered by the Arkansas Department of Economic Development (ADED), the Arkansas Department of Higher Education and the Arkansas Department of Workforce Education.

Additional customized course work was provided by ASTI in geometric dimensioning and tolerancing, computer aided drafting and design, hydraulics, computer applications for distance learning classes, computer technology certifications, and others as requested by industry.

During this same period, the ASU-Beebe Leadership Institute provided specialized college credit courses for employees of business and industry. Forty students from 10 Searcy area companies received 1,680 contact hours of training in Supervisory Leadership, Business Management and other business specific topics. A compressed non-credit version of the Leadership Institute courses was developed for an industry in Hazen in which 30 employees spent 16 weeks completing the rigorous training.

The John Deere Pro-Tech program has provided 75 John Deere Dealer employees with some 1,540 contact hours of training in subjects as divergent as Electrical/Electronic Diagnosis to Hydraulic Certification Training. ASTI is in the process of developing an industry requested "Adjustable Speed Drives" class with Dr. Cole presenting the class. Baldor Electric in Fort Smith donated the hardware necessary to develop the course and provided specialized training to Dr. Cole during his curriculum development. This equipment donation was approximately \$40,000 worth of new Baldor state-of-the-art motors, drives and controllers. The course will be similar in scope to the Programmable Logic Classes where portable trainers are being fabricated to allow for presentation of the course around the state at the work site or in neutral locations.

Keith McClanahan, assistant

# WIST Conference A Big Hit With Area Schools

Arkansas State Technical Institute hosted the 10th annual Women In Science and Technology (WIST) Conference for approximately 140 ninth grade girls and their counselors/teachers.

The conference is designed to heighten each girl's awareness of her own potential to enter and advance in male-intensive careers. The girls listened to women speakers in the fields of medicine, pharmacy, military, law enforcement, veterinarian, scientific, engineering, and computers.

Schools in the area that participated were: Beebe Jr. High, McRae, Searcy, Pangburn, Vilonia, Riverview and White County Central.

This year the conference was made possible by a mini-grant from the Arkansas Career Opportunities Region 2 Partnership Council.

---

director of ASTI was co-chair of the Arkansas Association of Two-Year Colleges Committee for the development of a statewide curriculum in "Industrial Maintenance." This is an industry requested program that is in the final stages of development. The Arkansas Department of Higher Education reviewed the proposal for the Associate of Applied Science Degree in Industrial Technology as well as technical certificates and certificates of proficiency during its July Coordinating Board meeting.

ASTI has been involved in the Department of Workforce Education Vocational Industrial Clubs of America (VICA) in hosting the VICA Club Management Institute (CMI). This was an intense week-long training program that stressed all aspects of how Vocational Instructors are to establish and

*Continued on page 17*



# News & Notes

## ASTI Economic

*Continued from page 16*  
manage local VICA clubs at their school. This training was taken either as undergraduate or graduate level work through the Vocational Education Department at ASU-Jonesboro. The VICA CMI was held on the ASU-Beebe campus in July, 1999 with more than 50 vocational instructors attending. Twenty-five schools were represented. ASTI provided the classrooms, computers, technical support and other logistical requirements that made this program possible.

ASTI was designated a CISCO Regional Training Academy, one of nine in the state, in April 1999. Three ASTI Computer Systems Technology instructors received 13 days of CISCO training then an additional eight days of training. The technology was incorporated into the Computer Systems Technology degree program in the '99 fall semester. The training provides certification training in CISCO networking technologies. Students who complete the sequence of four classes may qualify to become certified as a Certified Cisco Networking Associate (CCNA). Two of the four full time instructors received certification as CCNAs and Certified Cisco Academic Instructors.

The Computer Systems Technology degree program already incorporates Novell networking, Microsoft certification core courses of the Microsoft Certified Systems Engineer (MCSE) track, and the Microsoft A+ certification track in its degree plan. Additionally, ASTI has been designated a VUE Test Center. This will enable students to sit for the certification exams in Cisco, Novell, MCSE, Network+ and A+ while at ASU-Beebe.

ASTI has been involved in the development of a Career Development Center (CDC) located on Moore Street in Searcy. The CDC is set up to provide social services and job placement/training



**BEEBE BASH--** The Beebe Chamber of Commerce turned out the welcome wagon for Arkansas State University - Beebe students last August in the annual "Beebe Bash" on the ASU - Beebe campus. Morning rain showers failed to dampen the spirit as the activities moved inside and there was plenty of pizza, popcorn, soda pop, and gifts as students shifted between classes. Chamber members manned the tables to greet the students with a smile and a goodie.



to persons desiring these services.

ASTI is one of nine partners providing workforce skills training/evaluation in the CDC. Arkansas State University-Beebe/Arkansas State Technical Institute provides assistance

to the CDC clients in the following areas: Resume/Cover Letter Writing Skills, Interviewing Skills, Dress for Success, Computer Applications ( Word Processing), and Internet Employment Searches ( Internet Use ).



# ASU - Newport Enrollment Sets New Mark

ASU - Newport enjoyed a tremendous year in 1999-2000. The spring semester resulted in a record student enrollment of 591, including 19 international students and 63 students in the prison program. Students range in ages from 16 to 76 and represent 13 counties in Arkansas and eight different countries.

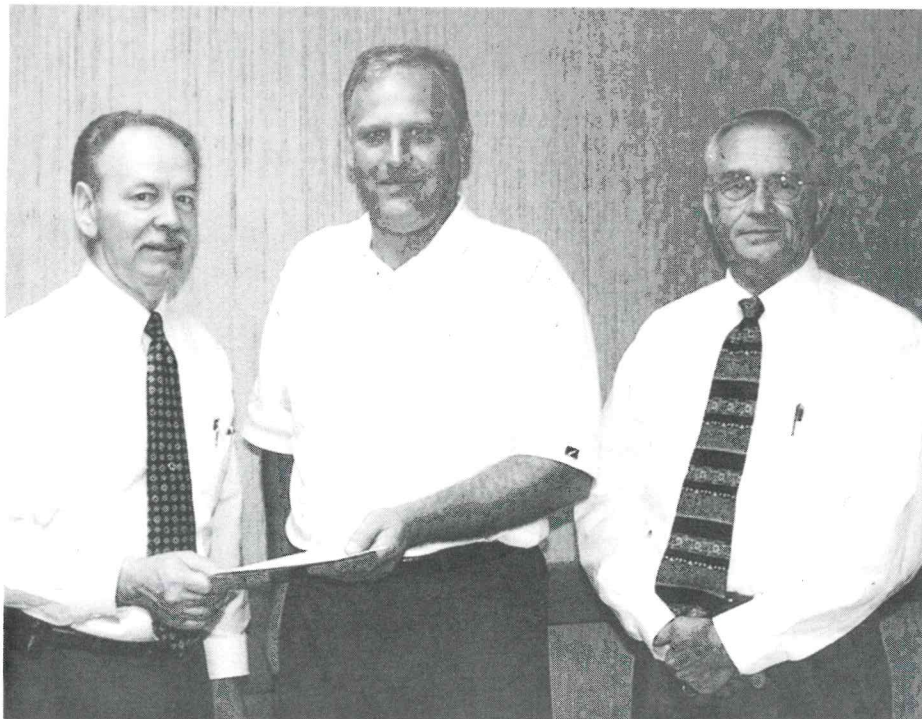
One of this year's most notable events at ASU - Newport is the development of the new aviation program now under the direction of Dr. John Kerr. Over 72 inquiries from around the state have been made since the program was announced and classes began May 30.

In addition to their regular coursework, students enjoyed a wide range of activities including the Brown Bag Lecture Series, relaxation workshops, theater productions, art shows, basketball tournaments, and more.

Highlights from the Brown Bag Lecture Series included Jamling Norgay, son of Sherpa Tenzing Norgay, who accompanied Sir Edmund Hillary on the first ascent of Mt. Everest in 1953. Jamling Norgay led the IMAX filming expedition to the summit of Everest in 1995. Also, famous rock historian, Barry Drake, provided an entertaining and informative look at the history of rock music. Then, Lt. Col. Dave Grossman, author of "Teaching Our Kids to Kill," offered insight on the causes of violent crime, especially among children.

Student Services and the Student Union personnel hosted picnics, a St. Patrick's Day party, and presented relaxation workshops during finals week. The annual Three-on-Three Basketball Tournament was once again a success with over 14 teams participating.

Other entertainment on campus included the fall production of "Dearly



**MAJOR DONOR**--John Deere gave the rebuilding of the ASU - Beebe farm a major boost by donating \$50,000 to the reconstruction project. The farm, utilized for teaching in the ASU - Beebe agriculture program, was virtually destroyed by the tornado last year. Plans are to first rebuild the barn and add a pavilion to the farm complex. Above, Craig Talik, manager of John Deere's College Partnerships program, presents the check to Chancellor Eugene McKay, left, and Larry Haile, right, director of Arkansas State Technical Institute.

Departed." In the spring, the first-ever dinner theater production, "Smoke on the Mountain," played to sold-out crowds for three performances.

Another first on campus was "Culture Share," a multi-cultural festival hosted by the international students. Approximately 300 local school children attended the "round-the-world" adventure as they toured the interactive exhibits such as Japanese teaching Origami and Columbian students offering samples of Columbian coffee. Students were given maps and scavenger hunt activities were held while touring the exhibits and visiting with the international students.

During April, the campus celebrated fine arts with "Small Works on Paper," a touring exhibit from the Arkansas Arts

Council. Works by young Arkansas artists from area schools were also displayed throughout Walton Hall. First, second and third place ribbons were awarded in the categories of photography, pencil drawing, watercolor, acrylic, and sculpture.

The Cisco program has been another of this year's highlights. About 80 percent of Internet traffic travels through a Cisco device. ASU - Newport has been named an official Cisco Academy Training site which will prepare students to take the Cisco Certified Network Associate exam. The Cisco program hopes to create skilled networking professionals to meet the current demand for Information Technology specialists in today's job market.



# A Special Thanks

## Our Special Thanks To . . .

ASU - Beebe is honored to recognize these alumni, faculty, staff and friends who have made an investment in Arkansas State University - Beebe:

### Lifetime Members

E.H. "Doc" and Ruth Abington  
Reita Adams  
Baldor Electric Company  
Community Bank  
Dr. Ruth Couch  
John Deere Foundation  
Walter & Louise England  
Entergy  
First Baptist Church - Beebe  
Regions Bank  
Dennis & Eva Gillam  
Ben & Mary Ann Pickard  
Richard V. & Thelma Jean Powell  
Billy & Brenda Shurley  
Stephens Incorporated  
Wal-Mart - Searcy

### Chancellor's Cabinet

Garth & Joanne Martin  
Pfizer, Inc.  
Garland & Susan Taylor  
Tiger Mart - Beebe  
Westbrook Funeral Home

### Chancellor's Circle

American Greetings Corporation  
Andy Anderson  
Arkansas State Federation of  
Farm Credit  
Bill & Ginger Ball  
Wilma Beard  
Millan & Kathryn Burrow  
Randy Busbea  
Cabot Star Herald  
Jerry & Suzanne Carlisle  
Rick Chudomelka  
Citizens Bank Walkers Club  
Crown Metal Buildings  
John Deere Company of Kansas  
Entergy - Searcy  
Farm Credit Service of  
CentralArkansas  
Leroy Goff  
Johnny Fisher  
GTE Foundation  
Larry & Judy Haile  
Brewer Hefner  
Jerry & Nancy Jackson  
Kentucky Fried Chicken - Searcy  
Dan & Deena Kison  
Wes Lody  
Dr. & Mrs. Robert D. Lowery  
Dr. Eugene McKay  
Lorett Nailing  
Bruce Oakley

UALR, Hirak Patangia, Ph.D.,P.E.  
Walter F. Scott  
Simmons First Bank  
Roy E. Simmons  
Dr. Thurmond  
Cathy Eoff-Tirato  
White County Farm Bureau  
Mr. and Mrs. Jim Wooten

### Diamond Club

Euell Adams  
Dr. Kyle Blickenstaff  
Mr. & Mrs. Morris Carlisle  
Charles & Jennie Cole  
John & Robin Hayes  
Sara Beth Morris  
Dorene O'Brien  
David & Susan Smith  
Jim and Mildred Wilbourn

### Anniversary Club

Linda Allee  
Amana Appliances - Searcy  
Anonymous  
ASU - Beebe Residence Hall  
Bailey's 66  
Earl Baker Motor Company  
Bill & Kathy Ball  
Doris Barnes  
Beebe Traditions  
Brian Berry  
Joanne R. Billingslea  
Debbie Bratton  
Dr. Jerry A. Burns  
Mr. & Mrs. Troy Carlisle  
Bill Carpenter  
CDC Lakewood Village  
S.D. Chaney Jr.  
Anthony A. Charvent  
Thomas Cossey  
Jean Cunningham  
Merle Cunningham  
Ashley Davis  
Brenda Davis  
Ron & Judi Davis  
Dr. Hazel Dickey  
Mr. & Mrs. Richard Edmonds  
Macon & Bobby Edwards  
Entergy - Searcy  
Dr. & Mrs. Bob Fisher  
Mr. & Mrs. Charles J. Fisher  
Mark Fisher  
J.A. Foy  
Charlie & Rosemary Frame  
Bertha Free  
Joseph M. Golembeski

William N. Grogan Sr.  
Nancy Hammes  
Mr. & Mrs. Carl R. Havey  
Mr. & Mrs. Brewer Hefner  
Debra Hefner  
Diana Holt  
Honey Island Swamp Tours Inc.  
Jacksonville Auto Sales  
William James  
Wanda Johnson  
Ed Kinsey  
Norma Kirk  
Jo Ella Kloss  
Sammy Langdon  
Bill Long  
Madison County Cooperative  
Larry McCall  
Elizabeth McCarty  
McKennon Implement Co./  
John Deere District  
Oran & Dona McKinney  
Rep. & Mrs. Randy Minton  
Morning Sun Short Stop  
Allen & Karen Norton  
Connie Nowell  
David Owen  
Mrs. Elmease B. Patton  
Philip Petray  
Hesta Pierson  
Pinnacle Structures Inc.  
Preston E. Pittman  
Charles F. Riddell  
Simmons First - Searcy  
Martin & Jayne Spears  
Carla J. Strayhorn  
Mr. & Mrs. Walter R. Tolson  
Joseph Vorro  
Paul Wagner  
Warehouse Furniture  
Roger & June Warren  
Carl K. White, Jr.  
Pam White  
Sandra Williams  
John J. Woods, Ph.D.

### Friends of the University

Adams Pest Control  
ASTI Amateur Radio Club  
"W5ASU"  
ASTI Personnel  
ASU - Business Club  
ASU - Beebe Faculty Association  
Addie Banks  
Mike & Martha Barber  
Beverly Barnes  
Les Battles

Robert & Marjorie Behrens  
Cathy Bell  
Mr. & Mrs. J.L. Bickerstaff  
Craig L. & Tommie Born  
James Brent  
Brown Electric Service  
Michael D. Burleson  
Charlene Chambers  
Alice Marie Choate  
CINTAS Corporation  
Ronnie Dean  
Rickey A. Favell  
Dr. Fred & Utimia Floodstrand  
Clayton Flynt  
Jean Forman  
Michael W. Goodman  
ASTI  
Laverne Hale  
Debra Hefner  
Dr. & Mrs. Samuel E. Howell  
Rosemary Johnson  
Lonnie Johnston  
William M. Jones  
Henry W. & Louise Liles  
Vincent & Marilyn Lyden  
Elizabeth F. McCarty  
Neil R. McMillen  
Melissa Meador  
Carla Miller  
Mr. & Mrs. David Miller  
Mr. & Mrs. Raymond W. Montgomery  
Mr. & Mrs. Douglas Moore  
Charles Neaville  
Lawanda Norman  
Stephanie Quesinberry  
Joe & Marianne Park  
Barnett Phillips Lumber  
Paul R. Ramsey  
Mr. & Mrs. William M. Sandefur  
Ivy Strayhorn  
Joan Strayhorn  
Joe Taylor, Jr.  
Andrew Elmo Thompson  
Vivian Todd  
Glenn Trigg  
Trux Inc.  
Mr. & Mrs. Larry Smith-Vaniz  
Brandi C. Wade  
William Wagner  
Fern Wallace  
Lonnie G. Webber  
Mr. & Mrs. Alvin Wheeler  
Michael West  
Harold & Marcella Wiggs  
Ethel Williams  
Alta Rea & Joe Wisdom

The ASU - Beebe Office of Institutional Advancement has several annual gift categories to fit every level of giving: **Lifetime Members** (cumulative gift of \$10,000 and over); **Chancellor's Cabinet** (\$5,000 - \$9,999); **Chancellor's Circle** (\$500 - \$4,999); **Diamond Club** (\$250 - \$499); **Anniversary Club** (\$100 - \$249); **Friends of the University** (\$35 or couple \$50 - \$99). Information on the ASU - Beebe gift clubs may be obtained by contacting Nancy Jackson, Office of Institutional Advancement, P.O. Box H, Beebe, AR 72012-1000 or call (501) 882-8255.



## ASU - Heber Springs No Longer An 'Idea'

Two years ago, a college at Heber Springs was just an idea. Today, that idea is reality. Arkansas State University - Heber Springs, a center of ASU - Beebe, opened its doors in 1998 and last spring over 100 students were taking classes at the Heber Springs facilities.

The idea of a college campus at Heber Springs began with a series of meetings between ASU officials and Cleburne County business, civic and community leaders. Later, feasibility studies were conducted and in each case, supportive and positive feedback was the result.

Governor Mike Huckabee voiced support for the college in the form of \$15,000 start-up money. Through the efforts of Rep. Becky Lynn and local civic leaders, \$700,000 was designated by the Arkansas Legislature to begin another phase of ASU - Heber Springs. Scholarship funds began to materialize

from area industry, businesses and individuals. Gina Jones was named director of admissions to oversee the educational program, additional staff and faculty were added, and the new college was up and running.

Downtown offices and classroom space were secured in July, 1999 and day classes were added to the already existing night class schedule conducted at Heber Springs High School.

When the fall classes begin this August, ASU - Heber Springs officials expect the enrollment to surpass the 100 students which completed classes in May. Staffers from the Heber Springs campus have provided information to area schools and school counselors and have talked with over 200 potential students.

This fall, ASU - Heber Springs will offer 28 college courses in accounting, business, keyboarding, microcomputer applications, small business manage-

ment, history, government, psychology, education, sociology, fine arts, English, literature, reading, oral communications, physical science and algebra.

In addition to the regular college curriculum ASU - Heber Springs has been working with area industries through Arkansas State Technical Institute, the technical division of ASU - Beebe. ASTI has conducted such short course programs as programmable logic controllers and basic hydraulics to help meet the needs of area industrial plants. In its newly formed continuing education department, ASU - Heber Springs conducted computer short courses which has received tremendous response from area businesses and individuals.

ASU - Heber Springs offices and classrooms are located at 320 W. Main and information can be obtained by calling (501) 250-9900.



Office of Development  
Arkansas State University - Beebe  
P.O. Drawer H  
Beebe, AR 72012-1000

NON PROFIT ORGANIZATION U.S. POSTAGE PAID PERMIT NO. 1959 Little Rock, AR
--