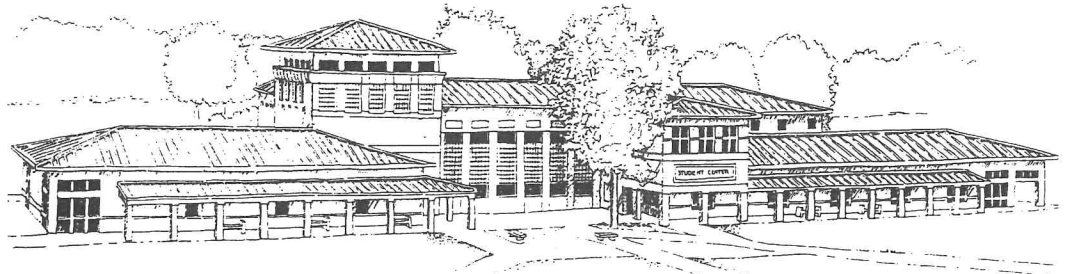


ASU - Beebe

Volume 5

MEETING THE CHALLENGE

Summer, 1999



The new Student Center is now in the early stages of construction with completion scheduled for next July. At left, an excavator works on a new parking lot.

ASU - Beebe Construction Keeping Pace With Growth

Arkansas State University - Beebe has experienced tremendous growth during the past decade and a half, a growth that has seen its on-campus student population triple—to over 2,100 students last fall.

To meet the demands of such growth, ASU - Beebe administrators were faced with providing more space to accommodate the expanding enrollment. During the past decade, the Math and Science Building was expanded, a new building was constructed to house Arkansas State Technical Institute, a new building was constructed to house the Applied Arts Division, and more recently, a new John Deere Ag Tech Building was added to the ASU - Beebe campus infrastructure.

ASU - Beebe administrators are continuing to plan for the future. Three major projects have been completed within the past year, two more are now under construction and additional facilities are on the drawing board.

A 9,000 square foot expansion to update Abington Library was recently completed. The \$1.5 million project not only gave the ASU - Beebe facility a newer and more modern look, but also upgraded the library to accommodate the expanding technologies which make information in all formats readily accessible to students, faculty and staff, as well as to the general public.

Fiber optic cable was added to the campus computer network in 1998 to meet cyberspace demands and to make internet services available in most buildings for students, faculty and staff. Qualified personnel may also access ASU Beebe's main computer base from almost anywhere on campus. This can be beneficial in reducing the long lines and long waits at registration as well as improving other student and employee services.

Also completed last summer was an outside elevator for ASU - Beebe's State Hall. The elevator makes the second floor of the classroom and office complex fully accessible to the handicapped. Careful consideration went into the project to be sure the addition

(Continued on page 3)



INSIDE

Chancellor's Message	2
Alumni Association	4
Advanced Degree Program	5
Lecture/Concert Series	6
Alumni News	7
January Tornado	8-9
Faculty/Staff News	10
Student Services News	12
ASTI News	13
ASU-Newport News	14
Special Thanks	15
Continuing Ed News	16

Building Program Shifts Into High Gear

During the next year ASU-Beebe expects to build six buildings on the Beebe campus and one at Newport. Phase I of the University Center will be completed by October 1 and Phase II should be operational by a year from this fall; this building will house our distance learning center programs and will enable us to send and receive more compressed video programs. Last fall, 181 students were enrolled in five ASU baccalaureate programs and one master's program on the Beebe campus. This new building should enable us to support additional programs from ASU-Jonesboro.



Chancellor McKay

The \$5 million student center should be operational by fall 2000. It will be located behind the Owen Center in the middle of the circle of academic buildings, easily accessible to students and visitors. It will house several student services, including food services, the Counseling Center, and the Learning Center; it will be the symbolic center of our campus and will also provide additional opportunities for the university to interact with the communities we serve.

ASU-Beebe has needed a physical plant building for several years. Later this summer, we will start a \$600,000 shell building that will be completed by our physical plant staff as time and money permit. This 18,000 square foot building will enable us to better

meet the needs of a growing university by combining several physical plant functions under one roof. This building will be located just behind the National Guard Armory on Center Street.

The January tornado destroyed six of our seven

farm buildings. We had an architect design a master plan for a new farm and hope to build three new buildings this year. The first building will be a milking barn. Since ASU-Beebe is one of two colleges in the state that teaches dairying, this building is needed as soon as possible. The second building will be a storage barn, and the third will include classrooms and a pavilion suitable for livestock demonstrations.

The \$3 million multi-purpose building at ASU-Newport, a branch campus of ASU-Beebe, will be complete by late spring 2000, perhaps by commencement. It will house a 600 seat auditorium and a stage suitable for drama productions as well as offices and classrooms. It will provide a new dimension of possibilities for students and numerous opportunities for the Newport campus to interact with the communities it serves.

Enrollment continues to grow at all of our campuses. ASU-Newport had over 500 students plus over 200 in the truck driving program. ASU-Beebe had over 2,100 on campus and several hundred more off campus, including 88 at the new center in Heber Springs. The five 8-week semesters at the Little Rock Air Force Base continue strong with over 300 per term. ASU-Beebe and its campuses served over 3,500 students during the fall semester with credit courses, in addition to a significant number taking non-credit courses on and off-campus. This does not include 181 students enrolled in ASU-Jonesboro classes at the Beebe campus.

Other significant accomplishments at ASU-Beebe this year include a perfect audit, another year without a tuition increase, and a new campus. Act 426 of 1999 created a center for ASU-Beebe at Heber Springs. Thanks to the support of the Heber Springs High School administration, we have been teaching evening classes at Heber Springs High School during the past year. We are planning to rent office space and a couple of classrooms so we can teach additional day classes this fall.

Like the old saying about the annual county fair--"It just gets bigger and better every year." We feel the same holds true for ASU - Beebe. . .we're getting bigger and, at the same time, we're getting better. But our philosophy will not change, that of a small university atmosphere coupled with a dedicated, student-centered faculty, staff and administration.

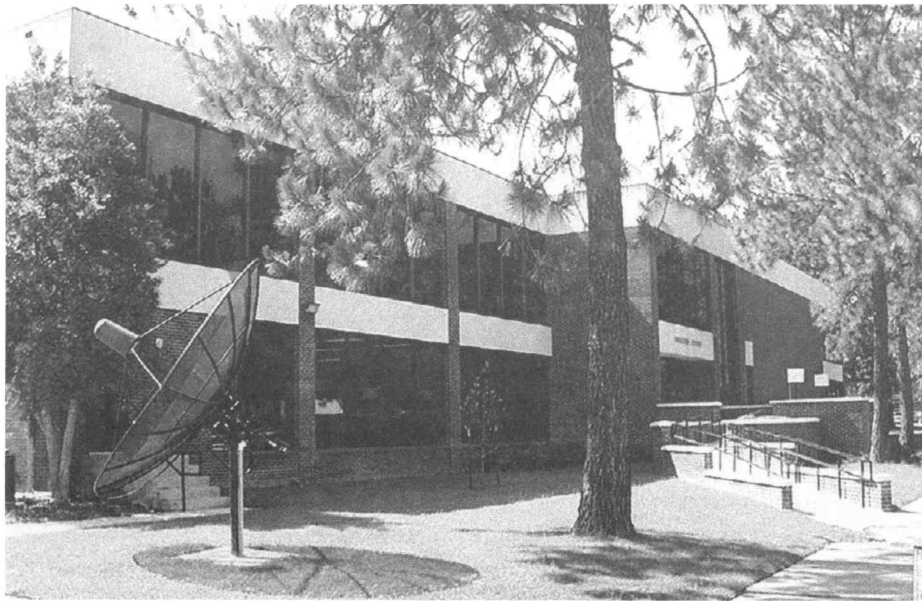
ASU - Beebe

MEETING THE CHALLENGE is published annually by the staff of Arkansas State University - Beebe. State Hall, Palm & Iowa Streets, Beebe, AR 72012-1000.

Bulk non-profit rate postage paid at Little Rock, AR.

ASU - Beebe
P.O. Box H
Beebe, AR 72012-1000

This publication is distributed free of charge to ASU - Beebe personnel, alumni, and supporters of the university.



Need Information? Check ASU - Beebe Internet Web Page

Need information on ASU - Beebe? Perhaps you or someone you know would like to see a schedule of classes. Or maybe you would just like to know what's happening on the ASU - Beebe campus.

You can find that information and more on the new ASU - Beebe web page on the internet. The university's web address is:

www.asub.arknet.edu

Whether it's a class schedule, the Campus Update newsletter, e-mail addresses of faculty and staff, or admissions information, that and more are available on the ASU - Beebe web page.

We Want To Hear From You

Have you received a promotion or started a new job, moved to another city, gotten married, had a baby, or any other event that friends and former classmates would like to know about? We would like to hear from you and publish your news in the next ASU - Beebe alumni newsletter. Drop us a note with the information to: Office of Development, ASU - Beebe, P.O. Box H, Beebe, AR 72012-1000.

NEW LOOK--Abington Library has undergone a \$1.5 million renovation and expansion which not only gives the complex a spacious and relaxed atmosphere but also brings the facility into the world of modern electronics. Some 9,000 square feet were added to the library. **Above** is the view of what used to be the backside of the library, facing the Math and Science Building. Information in electronic formats are now accessible to alumni as well as students, faculty, and staff. Thirty computers are located throughout the building to provide on-line capability and access to special databases. There are also software programs in word processing and spreadsheets available for use. Informative sessions are available to alumni and the general public on how to work with the new on-line electronic programs.

ASU - Beebe Construction

(Continued from Page 1)

conforms to the stately appearance of State Hall. The mission was successful as the new addition blends almost perfectly with the architecture of one of the first buildings on campus.

Construction on the Distance Learning Center is near completion and the new facility is located on the northern boundary of the ASU - Beebe campus, between the present Arkansas State Technical Institute and the Applied Arts Building. The \$1.4 million, 9,928 square foot classroom and office complex will house the four-year and master's degree programs now offered at ASU - Beebe. The Continuing Education Division, which offers computer short course training and a large variety of community service courses, will also be located in the new building.

The largest of the ASU - Beebe construction projects is the Student Center. Construction on the 35,125 square foot structure is now underway. The \$5 million Student Center

will provide, for the first time in 72 years, a building appropriately designed for student services. The center will centralize support services to assist students in achieving educational, personal and occupational goals. Since 94 percent of ASU - Beebe's enrollment is commuting students, the new structure will provide a place for students to go, relax, and study between classes and to become active in student activities.

The Student Center will be constructed at the hub of student activity, between Owen Center and the ASTI and Applied Arts buildings. It will house various student services that are now scattered throughout the campus—services such as the Learning Center, Counseling Center and food services along with student lounge areas and multipurpose rooms.

ASU - Beebe, now in its 72nd year, has undergone quite a change from 1927 when the "Junior Agriculture College of Central Arkansas" was founded with meager facilities and a handful of students.



CAMPUS BEAUTIFICATION—The campus of Arkansas State University - Beebe has taken on a brighter and more beautiful appearance, thanks to those who have worked and donated to the campus beautification project. Above, from left, Dr. Kieth Williams, president-elect of the Beebe Kiwanis, Sheryl Priest, chairman of the ASU - Beebe campus beautification committee, and Garland Kirkpatrick, retired bank executive and now with Arkansas Real Estate, look over one of the landscaping pods. The Kiwanis Club, Arkansas Real Estate and the Beebe Lions Club are three of the contributors for the project which will place seven landscaping beds at various points on campus. Persons or organizations interested in contributing to the project should contact Mrs. Priest, 882-5412. A plaque will be placed at each site recognizing the contributor.

New Alumni Association Forming At ASU - Beebe

The ASU - Beebe Development Council is in the process of forming an Alumni Association for ASU -Beebe. The Alumni Association will be made up of former students and friends of the university.

Carol Robertson of Beebe heads a steering committee to establish the new association. Members of the steering committee are Paul Ramsey, Wilma Beard, Laverne Hale, Roger Warren, Jannette Minton, and Eva Burrus. The committee is working on association by-laws and plans for special events for alumni. One of the events will be a Homecoming in connection with the opening of the new Student Center (see art work on page 1)

next summer or fall.

Robertson is also seeking volunteers to help with membership and special events. She noted that the Alumni Association will be beneficial to both the university and its alumni and friends. It will keep constituents informed about university happenings and offer certain advantages to members.

Robertson, along with volunteers Wilma Beard and Betty Hayes, have planned and executed several activities for former students and friends of ASU - Beebe.

Information on the Alumni Association may be obtained by contacting the ASU - Beebe Office of Development, (501) 882-8255.

New Members Selected For Council

Three new members have been named to the ASU - Beebe Development Council. Serving three-year terms will be Cathy Eoff, Wayne Johnson and Dewitt Yingling.

Eoff is a graduate of ASU and a former teacher. She is owner of Eoff and Associates Realty, Goff Insurance Agency, and Goff Mini Storage and Rentals. She serves on the Land Acquisition Committee for the Development Council.

Johnson is customer relations manager for Entergy's southeast area and will serve on the Development Council's Major Gifts Committee.

Yingling, vice president of Regions Bank, is very active in civic activities in Beebe and will also serve on the Major Gifts Committee.

'Buy A Brick' Drive Still Underway

Arkansas State University - Beebe's "Buy A Brick" campaign is still underway, said Nancy Jackson, director of Institutional Development.

The fund-raiser is a part of ASU - Beebe's VISION 2000 campaign and was established to help furnish the new Student Center for ASU - Beebe students and community use. Construction on the new 35,125 square foot complex is now underway.

"Persons who 'Buy A Brick' will become a part of the ASU - Beebe campus and will receive permanent recognition for their part in this worthwhile project," Jackson noted. Individuals may buy a brick for \$50 and have their name, their family name, or most any name they wish, engraved on the brick. It will be placed in the Student Center plaza when construction nears completion. Business firms may buy a brick for \$100.

Information about the "Buy A Brick" fund-raiser may be obtained by contacting the ASU - Beebe Office of Development, ASU - Beebe, P.O. Box H, Beebe, AR 72012 or call (501) 882-8255.

ASU Degree Program At ASU-B Growing

The second year of advanced degree programs held on the ASU - Beebe campus expanded to an enrollment of 181 students during the fall semester.

Through a partnership with ASU-Jonesboro, students earned credits toward baccalaureate degrees in business administration, elementary education, technology, and agricultural business. Approximately 20 students worked on graduate credits toward a Master of Science degree in educational administration.

The ASU-Jonesboro programs were offered in addition to the associate's degree and bachelor's degree in nursing that have been offered at ASU - Beebe for several years.

A new 2 + 2 bachelor's program in Clinical Laboratory Sciences will begin this fall. The degree builds upon the associate's degree in Medical Laboratory Technology.

In May, 23 students completed requirements for bachelor's degrees and participated in commencement exercises with ASU-Beebe graduates. ASU President, Dr. Les Wyatt, presented their diplomas.

Elementary education has proved to be the most popular major. At the end of the spring semester, 73 students were accepted into the Arkansas State University teacher education program. Of those, 37 are scheduled to complete teacher internships in the spring and graduate with BSE degrees in May 2000.

The new building to house the ASU-J programs should be completed in early fall. Three classrooms are dedicated for interactive television classes and one classroom is a computer classroom. It is located between the Applied Arts Building and ASTI.

The ASU-Jonesboro office is located in State Hall, room 212, until the completion of the new distance learning facility.

For additional information on the advanced degree programs, call Dr. Dianne Tiner at 501-882-8329 or e-mail inquiries to drtiner@asub.arknet.edu.



DISTINGUISHED ALUMNI—Billy and Brenda Shurley of Cabot, both 1969 graduates of Arkansas State University - Beebe, receive a certificate of recognition from ASU - Beebe Chancellor Eugene McKay, right. The Shurleys were recognized for their innovative program to teach English in the public schools. The program, entitled "The Shurley Method, English Made Easy" was developed in 1971 and has now been adopted by hundreds of schools in 40 states. The program teaches grammar in a new way, using rhythm and a set of specific questions to classify sentences orally, identifying each sentence part as well as the overall sentence structure. Students learn how all sentence parts fit together to make sense and express an idea, then learn to express their own ideas through formal and creative writing. The Shurley's company is located in Cabot and now employs 12 persons.

Registration Now In Different Buildings

The days of long lines and a hot gymnasium during registration are a thing of the past. Students are now registering in a faster and more convenient way.

A new procedure was put in place last November and advising and schedule entry are being done in the different academic buildings on campus.

Now, students go to the office of an advisor, who calls up their transcripts and test scores on computer, reviews the information and then signs off on their new schedules. The schedule is then entered on main computer from the same office area.

The change took weeks of planning and took the combined efforts and cooperation of all those involved.

December Graduation Added To Schedule

ASU - Beebe's first fall graduation ceremonies were held last December.

The graduation ceremonies, held at the end of the fall semester, were added to ease the overcrowding situation experienced in recent years at the May graduation.

Thirty students received degrees in the fall graduation. Plans are to make the fall graduation an annual event.

Buddy Holly, Count Basie Highlight Series

Throughout the coming season, quality entertainment and lecture programs are scheduled at Owen Center Auditorium. With top talent on the roster and season tickets priced affordably at \$10 each, the Lecture Concert Series proves to be one of the best entertainment packages in the country. Teddy Davis, coordinator of the series, announced that the concert season will begin with Buddy Holly and the Cricketers. All concerts begin at 7:30 p.m.

The 1999-2000 Concert Series and performance dates will be:

Buddy Holly and the Cricketers October 2

Buddy Holly and the Cricketers share the versatile Buddy Holly style performing such hits as "Rave On," "Peggy Sue," "That'll Be The Day," and "True Love Ways." Tragically killed in a plane crash at the young age of 22, Buddy Holly is gone but not forgotten as evidenced by performers such as Buddy Holly and the Cricketers. Hearing song after song, one realizes what an amazing catalogue that Buddy Holly produced in such a short lifetime.

Count Basie Orchestra November 9

In the 1930s and 1940s, Count Basie became known in the music world for his unique jazz sound approach. Under the current direction of Grover Mitchell, who is a long-time associate of the Orchestra and founder, the band has returned to its hallmarks: swing, precision, and above all, a focus on the ensemble. The Count Basie Orchestra is once again imprinting its trademark style and sound on a new generation.

Quapaw Quartet March 23

The Quapaw String Quartet was founded in 1980 and provides musical and educational entertainment to thousands of music lovers each year. From school programs to full-length recitals, the Quapaw Quartet is truly an Arkansas treasure. Quartet members are Eric Hayward, Greg Pinney, Lin Chang and Jeffrey Jurciukonis. Each member brings a wealth of musical experience to the stage.



The Count Basie Orchestra

Allegro Chamber Trio April 11

Flutist Megan Meisenbach, harpist Mary Golden, and violist Bruce Williams are all accomplished musicians in their individual music fields and combine their unique talents to form The Allegro Chamber Trio. Meisenbach and Golden have performed as a duet since 1976 and have both been honored with touring grants from the Mid-America Arts Alliance and the Texas Commission on the Arts. Williams, a popular soloist and chamber musician, has played with orchestras and symphonies from across the state of Texas.

Mr. Jack Daniel's Silver Cornet Band April 27

From a faded photograph taken in the mid 1890's, musician-actor-historian Dave Fulmer has re-created a form of Musical Americana that no longer exists. Touring the country since 1978, Mr. Jack Daniel's Original Silver Cornet Band brings vividly to life the sights and sounds of a vanished era in American musical history via a 12 piece band of Tennessee musicians dedicated to playing the music of the "small town bands" that dotted this land over half a century ago.

Lecture Series

*Lectures are held at 1 p.m. at the Owen Center Auditorium
and are open to the public*

Fred Campbell "Motivational Speaker" September 10

Ellen Gootblatt "Relationships" October 1

Barry Drake "Rock & Roll in the 80's" February 29

Robert Hastings "UFO's" March 27

Alumni News

Kaye Winningham '72 has been the speech language pathologist at Bradford for 23 years. She was one of the original speech pathologists in the area and in the first group to complete the ASU MA program.

Jannette Minton '75 is a member of the steering committee to establish an ASU - Beebe Alumni Association.

Eva Burrus '55 is a realtor for Century 21 in Cabot. She is serving on the steering committee to establish an ASU - Beebe Alumni Association.

Paul Ramsey '65 received his BA in liberal arts at the State of New York in Albany and retired from the U.S. Army as a sergeant major. He served on the Human Needs committee after the Jan. 21 tornado and is chairing the by-laws committee for the Alumni Association in Beebe.

Pam Ramsey '83 received her BSE at UCA and attended Harding. She retired from teaching after 20 years at the Beebe Public Schools.

Wilma Beard '55 has been honored as 1998-99 Distinguished Alumni. She is on the steering committee for the ASU - Beebe Alumni Association.

Anna B. (Liles) Spradlin '80 has worked for Citizens Bank/First Security Bank the past 28 years and has served as vice president for many years. She has attended schools at ASU lending, SMU Southwest Graduate School of Banking, UCA Audit School, and UALR. Spradlin is past president and current treasurer of the North Central Group Financial Women International. She and husband Charles operate a cattle and emu farm and have four children and seven grandchildren.

Carol Robertson '74, co-owner of Warehouse Furniture in Beebe, chaired the former student association committee for the last four years and is currently chairing the steering committee for the ASU - Beebe Alumni Association.

Ronnie Dean '89 is part owner of Beebe Farm and Ranch Supply. He is secretary of Beebe's Volunteer Fire Department and vice president of Beebe Kiwanis. Dean is married to the former Sherry Price and they have two daughters, Ashley, 7, and Brittany, 9.

Todd Burrow '89 is currently in rotations after receiving his biology degree from UCA and entering U of A Medical Sciences pharmacy program. He will receive his pharmacy degree in May 2000.

Richard Zimmer '81, retired, is executive director of the Beebe Chamber of

Commerce and chairs the rodeo committee. The Mayor of Beebe appointed him to set up the Human Needs committee after the January 21 tornado. He and other volunteers screened applicants and gave funds to victims.

David Liles Spradlin '82 has been named partner in the accounting firm Hamilton, Cherry, Spradlin & Company, Ltd. in Searcy. He is a member of AICPA and the Searcy Rotary Club. He and his wife **Tonia '92**, Learning Center multimedia specialist, have two children, Laura and Matthew.

Cathy (Jones) Foreman '81 teaches American History for Beebe Public Schools. She and her husband Bret have two children.

Stewart Priest '93 transferred to UALR and is studying psychology and sociology and he expects to receive his degree in the spring of 2001.

Carla (White) Choate '76 ended her assignment after four years as Parent Involvement Coordinator for Beebe Public Schools. She is now the scholarship counselor for Beebe High School, Learning Center small group counselor and coaches high school tennis.

Robert Evans '78 was appointed executive director of government relations by ASU President Les Wyatt.

Connie (White) Choate '78 is the Early Childhood reading specialist for Wilbur Mills Education Coop. She and husband **Mike '78** own Coast to Coast in Beebe.

Donald Ward '80, newly elected mayor of Beebe, suffered the loss of his home in the January 21 tornado.

Randy Minton '71 was elected Arkansas State Representative, District 69.

Roger Tonnessen '76 has completed police training at Arkansas Law Enforcement Training Academy in East Camden.

Scott Crisco, son of Hal and **Debbie (Galloway) Crisco '78**, represented Beebe High School at the Overall Championship Golf Tournament at Pleasant Valley Country Club in Little Rock. He also won the ASGA Junior Golfer of the Year Award and has been awarded a golf scholarship to attend Arkansas State University.

Joe Belew '57 has been named food service sales manager for Yarnell Ice Cream Company of Searcy.

Dorothy Carlisle '47 won second place in the River Oaks' Ladies Club Championship Golf Tournament.

Laurie Durham '97 and Kelly Wilkins '91 were inducted as members of the Searcy Junior Auxiliary and **Jenni Stephenson '94**

and **Malea Oliver '91** were elected to the Executive Board.

Jack Reaper '74 and his family were selected as the 1998 White County Farm Family of the Year.

Anita Reed '91 and husband Dale were among the 155 participants at the annual Arkansas Farm Bureau Young Farmer and Rancher Summer Leadership Conference.

Elizabeth Hewitt '97 and Nathan Laughlin '98 were named on the National Dean's List.

Paula Whaley '94 is Administrative Assistant in the Bald Knob School administration office.

Shaley Calhoun '79 serves on the Board of Education in the Des Arc Public Schools.

Leah Barley '98 and Timothy Meitzen '98 received the Math and Science Awards at the 1999 Annual Awards Banquet.

Marriages

Richard Calvin Estes '93 married Kimberly Kay Ross on June 6, 1998.

Jill A. Burlison '95 married Anthony J. LaRosa on June 6, 1998.

Thomas J. Slough '98 married Tiffany Dawn Todd on June 20, 1998.

Jennifer Green '95 married Eric Pierce on July 10, 1998.

Anthony M. James '89 married Tia Lin Sicks on July 25, 1998.

Todd E. Evans '92 married Diana K. Smith on September 18, 1998.

Lisa R. Garrett '98 married John D. Cunningham September 19, 1998.

Christie J. Westbrook '93 married Bryan A. Brooks on September 26, 1998.

Gayle A. Bates '94 married Justin R. Hunt on October 17, 1998.

Sandra Hooks '96 and Kevin Shipley '92 were married on November 7, 1998.

Vikki Lyn Helton '93 married Scott D. Jennings on December 19, 1998.

Delana Smith '98 married Shannon Patterson on February 27, 1999

Jamie Kissinger '96 married Dustin Sellers on March 13, 1999.

Kristopher Davis '95 married Amanda Britton on March 20, 1999.

Wendy Moore '95 and Roy Lang '91 were married on March 27, 1999.

Jill Pulliam Becton '95 and Randall Eschbacher were married April 10, 1999.

Alison A. Johnson '96 married Casey L. Carr on April 10, 1999.

A Night of January



President Bill Clinton, **ABOVE**, along with Congressman Vic Snyder, left, FEMA director James Witt, second from right, Transportation Secretary Rodney Slater, right, and Beebe Mayor Donald Ward, at podium, addressed a crowd of some 200 people before visiting the disaster site on January 24. **AT LEFT & BELOW**, the tornado left a path of destruction across Center Street, just two blocks east of the ASU - Beebe campus.



After an afternoon of warnings from weather forecasters, the storm hit the campus on an unusually warm January day. Little time would soon pass as just another day. The storm raised its ugly head and January 21, 1999 will be remembered by neighboring communities and at points through the region.

ASU - Beebe's main campus emerged from the disaster. The ASU - Beebe was not so lucky in another. Because of the evening storm, the farm as the tornado ripped through its destruction through Beebe public schools and the loss of livestock were lost at the ASU - Beebe campus and equipment.

The wail of sirens again echoed through the streets as ambulances which tried to make their way through the debris went into action to help neighbors. Local churches and the ASU - Beebe also became a hub of disaster relief. The night of the tornado and during the following days, the community gave Beebe contact with the rest of the world. The school opened to organized activities for public school students. ASU - Beebe's facilities as a distribution point for relief. Every Center set up in Owen Center where 14 staff members provided housing to counseling for victims.

ASU - Beebe students and employees turned to help with property, cleaning, packing, restoring and storing. Water, using chain saws and moving debris, and relatives -- friends helping friends. The scars

The ASU - Beebe farm, photos at **LEFT AND RIGHT**, was all but demolished by the tornado. Six buildings were destroyed, trees uprooted, and nine head of cattle were lost.



Devastation

21, 1999

ens, darkness began to fall on the ASU - Beebe
he rest of the city, most had gone home thinking
after darkness set in, death and devastation
be remembered as a tragic day for Beebe, its
central and northeast Arkansas.

F-3 tornado unscathed, even though two blocks
e farm, however, was lucky in one respect, but
ur, there were no students or university personnel
dings and livestock and continued its path of
igh the heart of the city. Six buildings and nine
1 and there was considerable damage to fencing

, but this time it was emergency vehicles and
the tornado's aftermath. The entire community
were transformed into disaster centers and
activity. Princess Hall opened its doors to families
ys the Ham Radio Club established a station to
Red Cross set up an emergency center in State
necessities to storm victims. Owen Center was
dren and "Feed The Children" program used
ood and necessities. The area's Disaster Recov-
nd federal agencies provided assistance ranging

to volunteers, collecting and returning personal
alvageable items, cooking and delivering food and
using neighbors and contacting their
still there, but together the community is healing.



ASU - Beebe became a hub of activity after the tomado. **ABOVE**, State Hall's Old Gym was turned into a distribution center for food, clothing and other necessities. **BELOW**, students, faculty and staff help by providing activities for children while parents are busy with the storm damage and other duties.



Students pitch-in to help unload a "Feed The Children" relief truck from Oklahoma City which provided food for those in need.



Faculty & Staff News

Rosemary Frame, Becky Wisdom, Karen Norton, Tom Gregson, and Phil Hart faced home reconstruction after the January 21 tornado.

Delana Mote, continuing education, spent many off-duty hours coaching a peewee basketball team last winter.

Robert Mitchum, business instructor, appeared on the *Today Show* in New York on March 4 along with another famous-name Arkansan, Gregory Peck of Conway.

Eugene McKay was honored by his alma mater, Lyon College, with the 1998-99 Friend of Education Award.

Bob Stiger, ASU - Newport director, was named "Man of the Year" by the Newport Daily Independent.

Ben Pickard, vice chancellor for Student Affairs, served as a panelist on AETN's program "Dollars for Scholars."

Mona Vaden, instructor of art, directed two annual public school art exhibits. The 18th annual junior high exhibit was held in March with 125 entries from 16 schools. The senior high exhibit was held in April and attracted 132 entries from 15 schools. Bill Long, assistant professor of art, instituted these exhibits.

Kathy Pillow, instructor of education, received the Wilson Memorial Scholarship for graduate work. This highly competitive award is presented by the Business and Professional Women's organization of Arkansas and is designed for professionals who want to advance in their careers.

Wilene Leach, assistant professor of mathematics, initiated the ModuMath program on an experimental basis. This computerized program lets students work on algebra at their own pace and allows them to fit the instruction to their specific needs.

Barry Farris & Vicki Wicker served as North Central evaluators for several school visits.

Rodney Williams, assistant professor of speech and theatre, judged theatre competitions for Lyon College and **Gerre Wisdom**, instructor of reading, served as a judge at the State Theatre Conference in Morrilton.

Teddy Davis, assistant professor of political science and geography, **Mike Kelly**, assistant professor of English, and **Mark Taylor**, director of guidance services, attended the annual meeting of the North Central Association of Colleges and Schools in Chicago. Davis will direct the self-study that the institution will prepare for the evaluation visit in 2002.

Bob Shain and Gary Holland, assistant professors of physical education, attended the

National Wellness Education Seminar in Phoenix. They visited a two-year college fitness and wellness center and are interested in incorporating several of its features into the ASU - Beebe program. Shain and Holland also hosted the Senior Olympics on campus.

Vicki Wicker, assistant professor of psychology, and **Dianne Tiner**, director of special programs, presented an interpersonal skills workshop entitled "What Animals Are in Your Zoo?" to the Future Business Leaders of America in Little Rock.

James Brent, assistant professor of history, and **Sandra Williams**, adjunct instructor of speech, are working to form a Debate Club for ASU - Beebe students. Brent also judged the 1999 history essay competition at the University of Central Arkansas. The topic was "The Relation of Science and Technology to History."

Rhonda Durham, instructor of business, took over the sponsorship of the Phi Beta Lambda group, which has been reorganized as the Business Club.

Fred Floodstrand, chair of the Mathematics and Science Division, and **Hazel Dickey**, chair of the Applied Arts Division, attended a meeting at Fayetteville for Quad State Chairs, a new group for deans, division chairs, and department chairs.

Wilene Leach and Linda Allee, assistant professors of mathematics, attended the National Council of Teachers of Mathematics regional meeting at Little Rock where both presided over program sessions.

Kay Turley, assistant professor of English, and **Suzanne Patterson**, instructor of English, presented a community service program for members of the 4-H Clubs at Pine Bluff.

Johnny Redd, assistant professor of English, has been named Distinguished Poet for 1999 on the basis of five poems that he submitted to International Society of Poets. Redd is also active in the local Lions Club and has initiated an attractive and informative newsletter for that group.

Rodney Williams attended the Speech and Communications Association meeting in Little Rock and with **Sandra Williams**, conducted two gender communications workshops for groups in Little Rock.

Kay Turley has been appointed to the International and Regional Club Committee of the National Paint Horse Association.

Suzanne Patterson and Holly Young, English instructors, gave presentations at the Conference on College Composition and Communication held in Atlanta. Their

presentations dealt with teaching composition to freshmen.

ASU - Beebe Student Affairs Division was well represented at the Arkansas Association of Two-Year Colleges conference with five staffers giving presentations during the annual meeting. **Brian Berry, Jo Howell, Daphne Perkins, Ben Pickard** and **Mark Taylor** each gave professional presentations during the various sessions.

Debbie Beeman, director of the Learning Center, served on the program and awards committee for the National Tutoring Association. She was a presenter at the Ark. Assn. for Development Educators conference and presided at the National Council of Teachers of Mathematics annual meeting, the National Assn. for Development Educators conference and the International Conference on Technology in College Mathematics. Beeman also serves as second vice president of the Beta Beta Chapter of Delta Kappa Gamma Society International.

Jo Howell, Learning Center, participated in the Round Table Discussion at the Missouri Mathematical Assn. for Two-Year Colleges conference.

Lea Marshall, Counseling Center, presented at the Arkansas Department of Education Transition Referral Project meeting.

Ben Pickard, vice chancellor for Student Affairs, serves as legislative chair of the Arkansas Council on Student Services. He represented two-year colleges on the AETN program "Dollars for Scholars" and participated in the New Expeditions Focus Group for the American Assn. of Community Colleges. Pickard also serves as co-chair of the Mississippi/Arkansas Two-Year College Chief Student Affairs Officers and conference coordinator.

Dena Prior, director of Financial Aid, served as corporate sponsorship chair and secretary-treasurer elect of the Arkansas Assn. of Student Financial Aid Administrators. She recently served on the Ark. Workforce Education rules and regulations planning committee for the new Technical Careers Student Loan program.

Tonia Spradlin, Learning Center, was a presenter at the Arkansas Assn. for Development Educators and the National Tutoring Assn. annual conference. She is the campus liaison for the AADE.

Lisa Patterson Thomas, Counseling, serves on the Arkansas Collegiate Drug Education committee.

Nine Receive Memorial Scholarships

Nine ASU - Beebe students have been awarded memorial scholarships, departmental or private donor, for the fall term. The recipients and their scholarships are:

R.V. Powell Scholarships

Three area students received the R.V. Powell Scholarship.

Jerold D. Wood of Shirley, served as FFA Junior Advisor and Sentinel and was a member of several judging teams for poultry, livestock, dairy cattle and parliamentary procedure. He plans to major in agriculture.

Brandi Bristow of Bee Branch served as FFA Chapter historian and Northwest District Officer, crops judging team, parliamentary procedure team and attended district and state leadership conferences. She received the State FFA Farmer's Degree and plans to major in agri-business.

Jarid Heith Wylie of Vilonia, was a member of the dairy judging team and participated in the Southeast District competition. He received the Animal Science Award and plans to major in animal science.

Denver E. Nettles Scholarships

Two area students received the Denver E. Nettles Scholarship to attend ASU - Beebe.

Steven Anthony Jaco of Weiner has been active in FFA where he served as Sentinel. He plans to major in agriculture education.

Morgan Marty of Greenbrier served as FFA Northwest District Officer and Chapter Officer and participated on the Northwest District dairy foods team. She plans to major in agriculture education.

England Challenge Scholarship

Donna Nelson of Kensett received the 1999-2000 England Challenge Scholarship to attend ASU - Beebe. Nelson has a 4.0 GPA and is a member of Gamma Beta Phi. She plans to pursue a bachelor's degree in elementary education with a minor degree in English. In addition to being a full-time student, Nelson is married to Dennis Nelson and the couple has three sons.



TOP AWARD WINNERS—Belinda Farris, left, of Beebe, Betty Morgan of Cabot, and Corey Riddle of Pangburn were presented Arkansas State University - Beebe's highest awards, the Citizenship Award, at the university's annual awards banquet. The Citizenship Award is not only for academic achievement but also for contributions to the university, participation in co-curricular activities, and potential for future success.

Dr. Manning Named Teacher of Year

Dr. Steve Manning has been chosen ASU - Beebe's Outstanding Faculty Member for 1999.

Dr. Manning's philosophy of teaching is that science should make a difference in the lives of students. He is an active botanical researcher and combines solid lecture strategies with classroom participation in order to involve the students in

their learning.

He has served on numerous committees at ASU - Beebe and is currently working on the committee to revise the faculty handbook.

Dr. Manning will be recognized this fall at the annual meeting of the Arkansas Association of Two-Year Colleges for his contributions to education.

William H. Owen, Jr. Scholarship

Jason Rowland of Hickory Plains was selected as the 1999-2000 recipient of the William H. Owen, Jr. Scholarship at ASU - Beebe. Rowland is studying toward an engineering degree at ASU - Beebe and has a 3.86 GPA. He serves as president-elect of both Gamma Beta Phi and the Leadership Council. As an Eagle Scout, he also serves his community by volunteering as Scout leader. Rowland plans to pursue a bachelor's degree in architectural engineering. He is married to Angela Rowland and they have two children.

Linda Jo Welch Scholarships

Two area students received the Linda Jo Welch Memorial Scholarship from the ASU - Beebe Division of Applied Arts.

Kimberley J. Lisle of Cabot is an accounting major at ASU - Beebe. She plans to transfer to the University of Central Arkansas to pursue a bachelor's degree in accounting.

James L. Horton of Searcy is pursuing an associate's degree in business administration and plans to transfer to ASU - Jonesboro to earn a bachelor's degree.

College Growth Reflected In Student Services

ASU - Beebe's growth of the past decade is, perhaps, best reflected in the growth of the student services provided through the Student Affairs Division.

Student participation in co-curricular programming grew over 100 percent during the past year. The student-led Leadership Council worked to involve the entire campus in such seasonal family activities as a campus trick-or-treat, pictures with Santa, an Easter egg hunt and the Angel Tree. The Angel Tree benefits children of ASU - Beebe students who have a difficult time providing Christmas gifts for their children. Some 30 children received gifts, toys and clothing, via the Angel Tree program, thanks to the Leadership Council and the campus community.

There were also events for the traditional age college students, events such as the popular Coffeehouses where students could display their talents and the annual Spring Fling where an afternoon of fun, games and food are provided on the campus lawn. In addition, the Back To Beebe Bash, co-sponsored by the Beebe Chamber of Commerce, welcomed students back with food and gifts.

The ASU-Beebe residence halls were near capacity with 127 resident students during the past year and the campus police distributed over 2,500 photo ID cards to students, faculty and staff. Over 3,500 parking decals were also issued during the year.

The Student Financial Aid Office provided nearly \$3 million in financial aid to 942 students through the spring semester, an increase of over 10 percent in funding. The financial aid staff also went to area high schools to provide information on the aid programs to students and their parents. In addition to the numerous high school visits, two high school counselor workshops were conducted in conjunction with the campus student services and in cooperation with the financial aid staff of ASU-Jonesboro.

Over 1,000 students, faculty and staff participated in the various intramural programs offered at ASU -Beebe. Next



HARVEST FEST QUEEN AND COURT-Jennifer Wood, center, was crowned Arkansas State University - Beebe's Harvest Fest Queen to highlight the annual activities at the university. Miss Wood is a freshman agriculture major from Cushman. Selected to reign with the new Harvest Fest Queen are, from left, Ioanna Batsioudi of Greece, first runner-up; Jennifer Helton of Searcy, second runner-up (tie); Tiffany Wood of Cushman, second runner-up (tie); and Heather Wilf of Pleasant Plains, second runner-up (tie).

year, the facilities will be opened to the community during weekends.

Perhaps the busiest departments on campus are the Learning Center and the Counseling Center.

The Learning Center, where students can go to get academic help, assisted some 2,339 students last year. That figure represents a 17 percent increase over the year before. The Learning Center staff provides assistance through individual tutoring, computerized tutorials, and audio/visual tutorials in over 80 course areas.

In addition to ASU - Beebe students, the Learning Center is utilized by students from Little Rock Air Force Base, Heber Springs, Newport, and the ASU-Jonesboro programs on the ASU - Beebe campus. Overall, over 22,000 hours of student usage were recorded in the Learning Center, an increase of 35 percent in

attendance. Student development specialist Faye Moore has joined the Learning Center staff.

The Counseling Center continues to be a busy place on campus. Over 5,000 contacts with students, prospective students, alumni, faculty, staff and people of the community were made during the year.

Special programs offered by the Counseling Center staff have included drug and alcohol abuse, education and healthy relationships, stress management, disaster recovery and others. The counselors also remain active in research activities dealing with student satisfaction and perception of campus life and coordinating the campus quality training initiative. Lea Marshall has been added to the Counseling Center staff.

ASTI Selected For Network Training

Arkansas State Technical Institute has been designated a CISCO Regional Training Academy. The program will provide certification training in CISCO networking technologies.

Students who complete the sequence of four classes may qualify to become a Certified CISCO Networking Associate (CCNA). The technology is being incorporated into ASTI's Computer Systems Technology degree program. The program already incorporates Novell networking, Microsoft certification core courses of the Microsoft Certified Systems Engineer (MCSE) track and the Microsoft A+ certification track.

ASTI has also been designated a VUE test center. This will enable students to sit for the certification exams in Novell, MCSE and A+ while at ASU-Beebe.

The Economic Development Office at ASU-Beebe/ASTI continues to be heavily involved in business and industry training. During the year training was conducted for 191 students representing more than 33 companies located throughout the state.

Most of this training was in the advanced manufacturing technology of industrial automation with two, three-day courses being offered, Introductory Programmable Logic Controllers and Advanced Programmable Logic Controllers. This specialized training was provided using portable Allen-Bradley Programmable Logic Controllers and ASU-Beebe customized curriculum. The equipment has added a new dimension in providing necessary programming and troubleshooting skills for today's industrial maintenance personnel.

ASTI takes approximately \$160,000 worth of equipment to the PLC classes. The instructor is Chuck Cole, a nationally recognized and award winning Professional Engineer. Dr. Cole is an associate professor in Industrial Automation at ASU-Beebe and owns Cole Engineering in Little Rock.

Many Arkansas companies benefit from the Existing Workforce Training Program. The program makes state grant money available to industries in SIC 20-39 to help defray the cost of employee training. The grants range from 20% to 70% of qualified training expenses. The program is jointly administered by the Arkansas Department of Economic Development (ADED), the Arkansas Department of Higher Education and the

Arkansas Department of Workforce Education.

The ASU-Beebe Leadership Institute provides specialized college credit courses for employees of business and industry. This year 32 students from 10 Searcy area companies received training in Supervisory Leadership, Business Management and other business specific topics.

Last December the first three graduates of the Leadership Institute were recognized at Bryce International in Searcy by Larry Haile, vice chancellor and director of ASTI. The second cycle of the

Leadership Institute, which takes college classes to industry, has first graduates

Leadership Institute began during the spring semester with 21 participants, the largest class to date.

The John Deere Pro-Tech program has provided 323 John Deere dealer employees with training in subjects as divergent as Electrical/Electronic Diagnosis to Hydraulic certification training.

ASTI is in the process of developing an industry requested "Adjustable Speed Drives" class with Dr. Cole presenting the class to industry. Baldor Electric in Fort Smith has agreed to donate the hardware necessary to develop this industry requested course and to provide specialized training to Dr. Cole during his curriculum development. The equipment donation will be approximately \$40,000 worth of new Baldor state-of-the-art motors, drives and controllers.

The course will be similar in scope to the Programmable Logic Classes where portable trainers are being fabricated to allow for presentation of the course at work sites around the state or in neutral locations.

Keith McClanahan, assistant director of ASTI is co-chair of the Arkansas Association of Two-Year Colleges Committee for the development of a state wide curriculum in "Industrial Maintenance." This is an industry requested program that is in the final stages of development. The proposal was presented to the Arkansas Association of Two-Year

Colleges Workforce Training Consortium in June. It was later presented to the State Chamber of Commerce and will also go to the Arkansas Department of Higher Education as a request for an Associate of Applied Science Degree in Industrial Maintenance as well as technical certificates and certificates of proficiency.

The program is meant to be a fully transferrable degree within the two-year colleges in Arkansas.

ASTI remains a key component of the Arkansas Science and Technology Association's Arkansas Manufacturing Extension Network. The network is funded by both state and federal funds and provides statewide engineering expertise and ISO/QS 9000 expertise to manufacturers through a network of field engineers and specialists.

The field engineers are strategically located in Fayetteville, Fort Smith, Little Rock, Jonesboro and Camden to provide this state wide expertise. ASTI continues to offer training to the network engineers in Programmable Logic Controllers and AutoCAD as well as the other technical services that ASTI can provide.

ASTI has been involved in the Department of Workforce Education Vocational Industrial Clubs of America (VICA) in hosting the VICA Club Management Institute. This is an intense week-long training program that stresses all aspects of how vocational instructors are to establish and manage local VICA clubs at their school. The week of training may be taken as undergraduate or graduate level work through the Vocational Education Department at ASU-Jonesboro. ASTI provides the classrooms, computers, technical support and other logistical requirements to make this program a success.

ASTI has been involved in the development of a Career Development Center located at the Employment Security Division in Searcy.

ASTI is one of nine partners providing workforce skills training/evaluation to clients using the ESD office. Arkansas State University-Beebe/Arkansas State Technical Institute will provide assistance to the CDC in the following areas initially: Resume/Cover Letter Writing Skills, Interviewing Skills, Dress for Success, Computer Applications (Word Processing), and Internet Employment Searches.

ASU - Newport Enrollment Continues Upward Trend

ASU-Newport continued its record-breaking trend established earlier by enrolling a record 511 students for the spring 1999 semester.

In addition to on-campus courses, classes were offered at the recently opened Grimes and McPherson Correctional Facility. ASU - Newport implemented a new education program at the prison.

ASU-Newport courses were also offered at Newport High School and several continuing education classes were held both on campus and on the internet. Eighty-six individuals earned their Arkansas high school diploma from the Adult Education Department in 1998-99. The department will be offering courses throughout the summer in adult education, adult basic education, English as a second language, and literacy.

Many changes occurred at ASU-Newport this year. The most visible change is the ongoing construction of the Multipurpose Building. The complex will house a 600-seat auditorium and several meeting rooms that will be available for community use. A groundbreaking ceremony was held for the Multipurpose Building last November at Walton Hall on the ASU-Newport campus. Participants in ASU-Newport's summer 1998 Creativity Camp played an active role in the ceremony.

The Brown Bag Lecture/Concert Series featured an outstanding line-up of speakers and entertainers throughout the year. Those included the Quapaw Quartet; Pavel Palazchenko, interpreter for the former Soviet leader Mikhail Gorbachev; historian Anthony Cohen; Dr. David Saugey, Arkansas bat expert; U. S. Senator Tim Hutchinson; wildlife photographer Tim Ernst; and actor Roy Henderson.

A record number of students participated in university-sponsored events this year, including intramurals, picnics, and a drive-in movie. The Student Union Body sponsored the Fifth Annual Three-on-Three Basketball Tournament in April. A record 37 teams played in the tournament, and over 30 area businesses co-sponsored the event.

Two outstanding theatrical productions were presented by the ASU-Newport Communications/Theater department: *American Dreams* and *Nothing But Nonsense*.

Ridge to River, a literary magazine published by ASU-Newport, featured the poetry, photographs, artwork, and writings from students, faculty, staff, and members of the surrounding communities.

Changes also took place in the Nursing Department and in the library this year. The State Board of Nursing reviewed ASU-Newport's practical nursing program last March. The LPN program received very positive feedback from the review. An advisory committee was formed for the library last fall. The committee spent the last two semesters formulating library policies and completing a policy manual. These policies will be submitted to the ASU Board of Trustees for approval. Members of the library advisory committee include Wayne Boyce (chairperson), David Jamieson, Ike Wheeler, Franchelle Harrell, Terri Reno, Bernard Haynes, and Donna Gould (ex-officio member).

The library also added several new on-line databases. One of the databases, Proquest Direct, contains a business periodical index, newspaper index, and a general periodical index. Most of the periodicals indexed in this database are also available full text. The most recent addition to the library's on-line databases is Current Biography.

Dr. Couch Chosen For North Central Council

Dr. Ruth Couch, vice chancellor for Academic Affairs, was chosen to serve on the newly formed North Central Council, the Institutional Actions Council.

The Council will have 26 members chosen from institutions across the 19-state North Central region. The committee members serve on panels to take action on institutional change and to report any emerging trends in higher education. Dr. Couch will serve a 2-year term.

Upward Bound Program Gets \$950,000 Grant

The ASU - Beebe Upward Bound program has received a \$950,000 federal grant to continue assisting area students for the next four years.

The program is designed to prepare students to continue their education after high school. It began at ASU - Beebe in 1995 and serves high school seniors, juniors and sophomores from a five-county area in central Arkansas. This year, 52 students representing 14 school districts participated in the program.

Students actually get a taste of college life in the Upward Bound program. They meet 26 Saturdays on the ASU - Beebe campus during the school year, then live on the ASU - Beebe campus five days a week for six weeks during the summer. During those spans, students receive academic instruction and tutoring, counseling, cultural experiences, self-esteem activities, career awareness, college preparation and academic advisement.

ASU - Beebe Personnel Elected At AATYC Meet

Four faculty and staff members from Arkansas State University - Beebe were elected or advanced to new offices in the Arkansas Association of Two-Year Colleges at the organization's annual conference in Hot Springs.

Dr. Mark Taylor was elected vice president of the AATYC Board of Directors and Tina Walton was elected chair-elect of the Classified Staff Division.

Advancing to new offices in the association are Dr. Eugene McKay, chair of the Presidents and Chancellors Division and Cindy Sharp, chair of the Classified Staff Division. Four from ASU - Beebe were also among the honorees at the annual conference. Sophomore Dawn Peoples was honored as ASU - Beebe's Academic All-Star, Assistant Professor Teddy Davis was named Outstanding Faculty Member, Business Manager Wanda Johnson was named Outstanding Employee, and Wilma Beard was honored as ASU - Beebe's Distinguished Alumni.

A Special Thanks

Our Special Thanks To . . .

ASU - Beebe is honored to recognize these alumni, faculty, staff and friends who have made an investment in Arkansas State University - Beebe:

Lifetime Members

Reita Adams
Community Bank
Dr. Ruth Couch
John Deere
First Baptist Church-Beebe
Regions Bank
Dennis & Eva Gillam
Richard V. & Thelma Jean Powell
Stephens Incorporated
Wal-Mart-Searcy

Chancellor's Cabinet

Conway Regional Center
First Security/Citizens Bank
Garth & Joanne Martin
Westbrook Funeral Home

Chancellor's Circle

Andy Anderson
Baxter County Fair Association
Baxter Healthcare Corp.-Mt. Home
Cabot Star Herald
Citizens State Bank-Bald Knob
Wilma Beard
Beebe News
Randy Busbea
Jerry & Suzanne Carlisle
Morris & Dorothy Carlisle
David & Carla Choate
Crown Metal Buildings
Walter England
Charles & Rose George
Leroy Goff
GTE Foundation
Larry & Judy Haile
ITT Automotive-Searcy
Jacksonville Steel
Jerry & Nancy Jackson
Chuck & Wanda Johnson
Kentucky Fried Chicken-Searcy
Bill & Ginger Ball
Garland & Wilma Kirkpatrick
Lonoke County Fair & Livestock Assn.
Dr. Eugene McKay

Bernard E. Nichols
Bruce Oakley
Ben & Mary Anne Pickard
Simmons First Bank
Jack & Barbara Simons
Roy E. Simmons
Stallion Enterprises
Tiger Mart-Beebe
Dr. Dianne Tiner
Walt & Vera Tolson
Richard Zimmer

Diamond Club

Arkansas Real Estate-Beebe
Beebe High School Classes 1935-47
Doyle Burns Tiretown, Inc.
Dreamline Inc.
"Bro" Erwin Memorial
Randy Harrell
Joe & Peggy Hastings
John & Robin Hayes
Randy & Jannette Minton
Sara Beth Morris
Pinnacle Building, Corp.
Walter F. Scott
David & Susan Smith
Garland & Susan Taylor

Anniversary Club

Eugene (Doc) H. Abington
Adams Pest Control
Euell Adams
Bill & Kathy Ball
Doris Barnes
Debbie Beeman
Marshall & Monica Benton
Jerry A. Burns, MD, P.A.
Augustine Busbea
Ronnie Busbea
Troy & Betty Carlisle
Tom & Mary Carrico
Charles & Jennie Cole
Beebe Chamber of Commerce
Macon & Bobbye Edwards
Joseph M. Golembeski, Jr.

Terry Graham
Nancy Hammes
Bob & Wanda Hawkins
Mr. & Mrs. Brewer Hefner
Scotty & Diana Holt
Haskell & Betty Kelley
Warren & Sandra Knight
Candase Jackson
Chuck & Wanda Johnson
Mr. and Mrs. Bobby Lane
Bill & Wilene Leach
Lehman Graphics
Charles & Faye Moore
Robert & Annabelle Norton
David Owen
Tracy Pennington
Amanda Perciful
Philip Petray
Jack L. Simmons
Martin & Jane Spears
Trux Incorporated
Charles Waire
Karl & Doris Ward
Bennie & Lorraine Wilson
Cynthia D. Wright

Friends of the University

Debra Adams
Joe & Thetta Allmon
Raymond & Wanda Archer
ASTI Amateur Radio Club "W5ASU"
Lynn "Buddy" Baker
Mike & Martha Barber
Doris Barnes
Sharon Been
Robert & Marjorie Behrens
Cathy Bell
Mr. and Mrs. J.L. Bickerstaff
Robert & Verna Boggan
Emma Bowie
Bob & Melba Brackin
Judy Brooks
Wanda Busbea
Charlene Chambers
Alice Marie Choate

Chi-Alpha

Nancy L. Chlapecka
Barry & Jeny Criddle
Richard & Cynthia Dale
Dr. Hazel Dickey
Kathy Featherston
Mr. and Mrs. Charles J. Fisher
Dr. Fred & Utimia Floodstrand
Clayton Flynt
Phillip & Marcheta Goodin
Grant County Fair Association
Bobby & Sandra Greene
Laverne Hale
John & Sherri Harrell
Dee Ward & Kathy Hefner
Susan Holloway
Derryl & Vaccol Holt
Mr. and Mrs. R.J. Johnson
Cathy S. Jones
Margaret Kinley
Mrs. Jo Ella Kloss
Bobby & Nelda Lane
Ronald & Jamie Melson
Carla Miller
David Miller
Scott & Rita Mitchell
Vernon & Betty Morgan
Kathy Mullis
Mayumi Ohashi
Tracy Pennington
Bill & Patsy Pipkin
Christine Reidhar
Charles & Cathy Roe
Mr. & Mrs. William M. Sandefur
Dr. J.L. Shue
Joe Taylor Jr.
Tir-County Arts & Crafts Guild
Winston & Margaret Vines
Doris Ward
Roger & June Warren
Sid & Elizabeth White
Don & Linda Whitt
Rebecca A. Williams
G.B. & Susan Winkler

The ASU - Beebe Office of Institutional Advancement has several annual gift categories to fit every level of giving: **Lifetime Members** (cumulative gift of \$10,000 and over); **Chancellor's Cabinet** (\$5,000 - \$9,999); **Chancellor's Circle** (\$500 - \$4,999); **Diamond Club** (\$250 - \$499); **Anniversary Club** (\$100 - \$249); **Friends of the University** (\$35 or couple \$50 - \$99). Information on the ASU - Beebe gift clubs may be obtained by contacting Nancy Jackson, Office of Institutional Advancement, P.O. Box H, Beebe, AR 72012-1000 or call (501) 882-8255.

Continuing Ed Looks To Community

The Continuing Education Division of ASU - Beebe serves as the university's extension into the communities of Central Arkansas--whether it's offering college courses in area towns, offering college courses for credit to area high school students, offering computer short courses for all who would like to learn the how-to of computer operation, or offering leisure arts courses as a community service in such areas as photography, cake decorating, sign language, etc.

Continuing Ed oversees the college courses offered at ASU - Heber Springs. Courses are now offered in history and algebra and the curriculum is expected to grow in the future. College courses are also offered at Little Rock Air Force Base and classes there, too, are open to the public when space is available. Kelly Chavers has been named assistant registrar for the ASU - Beebe classes at LRAFB and W.J. Leak has joined the staff as part-time bookstore manager at the base facilities.

College-level courses are also offered to high school students in six area high schools with more to be added next term. High school students at Bald Knob, Hazen, Lonoke, Vilonia, Rosebud and Riverview

in Searcy may now gain college credit while studying at their own school under ASU - Beebe's concurrent enrollment program.

Next term, the program is expected to be offered at Searcy High School, Mt. Vernon, Heber Springs, White County Central and Des Arc high schools.

Regina Yingling heads the leisure arts classes and non-credit computer short courses offered through ASU - Beebe's Continuing Education Division. Enrollments continue to increase in those areas and day classes have been added to the computer short course scheduling to accommodate those who may prefer day classes or may not be able attend night classes.

Veterans who wish to begin or continue their higher education can get all the requirements taken care of through Continuing Ed. Delana Mote heads the VA department which recently received a "no discrepancies" report during the annual VA audit conducted by the VA and State Approving Agency for Veterans Affairs. "That was a first for ASU - Beebe and an outstanding accomplishment," said Bob Lashlee, director of Continuing Education. Mote also implemented the VA electronic reporting system for the university.



Office of Development
Arkansas State University - Beebe
P.O. Drawer H
Beebe, AR 72012-1000

NON PROFIT ORGANIZATION U.S. POSTAGE PAID PERMIT NO. 1959 Little Rock, AR
--