

ASU - Beebe

Volume 3

MEETING THE CHALLENGE

Summer, 1997



ASU President Les Wyatt announces the new baccalaureate and graduate degree programs to be offered at ASU - Beebe.

Baccalaureate, Graduate Degrees To Be Offered

Arkansas State University and Arkansas State University - Beebe officials have announced the baccalaureate and graduate degree programs that will be offered on the ASU - Beebe campus, pending formal approval of the ASU Board of Trustees and the State Board of Higher Education.

This summer, students began study toward a baccalaureate degree in business, agriculture, and technology, and a master of science degree in educational administration while attending classes at ASU - Beebe. In addition, an associate of science degree in nursing will continue to be offered along with upper-level courses in elementary education, criminology, and registered nursing transition. ASU officials will continue to develop proposals for elementary education and criminology degrees.

Thirteen upper-level courses were offered on the ASU - Beebe campus during the summer terms and 20 more such courses will be offered when the fall

Continued on page 3



INSIDE

Chancellor's Message	2
CADD Program Lauded	5
New Scholarship	5
New Summer Session	7
Alumni News	8-9
Faculty, Staff News	9,12
ASTI News	13,15
Fine Arts News	14
Student Services News	16
Manning Research	17
ASU - B/Newport	18
Special Thanks	19
Lecture/Concert Series	20

ASU - Beebe has experienced tremendous growth during the past decade, a growth that has seen its student population almost triple--to over 1,800 students last fall.

To meet the demands of such growth, ASU - Beebe administrators were faced with providing more space to accommodate the expanding enrollment. In recent years, an addition was added to the Math and Science Building, a new building was constructed to house Arkansas State Technical Institute, a new building was constructed to house the Applied Arts Division, and the most

recent construction project is the John Deere Ag Tech Building completed last fall.

Growing pains are good pains to have, and ASU - Beebe administrators have continued to plan for the future. Two new buildings are on the drawing board along with an expansion of Abington Library. In addition, work began this summer to network the campus with fiber optic cable to meet cyberspace demands of the future.

When the fiber optic cabling project is completed, Internet services will be available in most buildings for students, faculty, and

Continued on page 3

ASU - Beebe Looking To The Future

Although several previously planned programs were successfully implemented during this past year, we are likely to remember 1996-97 as a time of extensive planning for the future development of the Beebe and Newport campuses.



Chancellor McKay

Major accomplishments during the past year include the development of a new mission statement and a perfect audit; the truck driving program at Newport and the John Deere program at Beebe are developing well. The new John Deere building was completed last August and the new commercial driving building should be finished by this August. The Development Council has been working hard and has set a goal of raising \$300,000 to furnish the new student center. The legislative session was a good one for the Beebe and Newport campuses, thanks to our friends in the legislature.

The university hired an architect to develop a masterplan for the Beebe and Newport campuses. Thus plans were developed and presented to the Board of Trustees in February. The masterplan provides a phased building program for up to 3,750 full time equivalency students at Beebe and 780 full time equivalency students at Newport. Steps are already being taken to

implement parts of the masterplan.

At the Newport campus, a committee was appointed to develop plans for a \$2 million multi-purpose building to include an auditorium, a business/industry complex, and a food service area. Construction

should start on this building next year.

At the Beebe campus, an exterior elevator for State Hall should be completed by early fall; a \$1.2 million addition to the library should be started this fall, and a \$3 million student center should be started by next spring. Because of the enrollment growth during the last decade, all three items are desperately needed. The elevator will enable extensive usage of the three classrooms in State Hall and will make the second floor handicap accessible.

The Abington Library was built in the early '70's to hold 48,000 volumes and now has 55,000 volumes. The new addition to the library will make it a modern electronic library with computer and Internet access and will provide space for additional volumes.

The new student center, to be located between the Owen Center and the Advanced Technology Center, will house the Learning Center, the Counseling Center, and food services as well as rooms for student learning and entertainment. The current student center holds about 50 students and has been inadequate for 20 years. With around 1,800 commuting students, ASU - Beebe certainly needs this facility.

The best news is we've been able to do all of these things without raising tuition. Tuition for ASU - Beebe's two-year programs will remain at \$45 per credit hour for at least one more year.

During the spring semester, we surveyed over 1300 of our students to see how many would like to get a four-year degree at Beebe. Over 900 indicated that they would like to do so. ASU - Jonesboro announced plans to teach courses leading to bachelor's and master's degrees at Beebe beginning this summer. A new building is being planned to house these programs.

The prospects for ASU - Beebe's future look bright if we continue to have high quality programs and remain the friendliest, most student-centered campus in the state. We plan to do so.

ASU - Beebe

MEETING THE CHALLENGE is published annually by the staff of Arkansas State University - Beebe. State Hall, Palm & Iowa Streets, Beebe, AR 72012-1000.

Bulk non-profit rate postage paid at Beebe, AR.

ASU - Beebe

P.O. Box H

Beebe, AR 72012-1000

This publication is distributed free of charge to ASU - Beebe personnel, alumni, and supporters of the university.

Future Growth

Continued from page 1

staff. Qualified personnel may also access ASU - Beebe's main computer base from almost anywhere on campus. This can be beneficial in reducing the long lines and long waits at registration as well as improving other student and employee services. The fiber optic project is expected to be completed by November.

Abington Library will undergo an 8,000 square foot expansion and the target date for completion is next summer. The \$1.2 million project will update the ASU - Beebe facility to accommodate the expanding technologies which make information in all formats readily accessible to students, faculty and staff, and to the general public.

Also on the horizon is a new Student Center and a Distance Learning Center. The Student Center will be constructed at the hub of student activity, between Owen Center and the ASTI and Applied Arts buildings.

The ASU - Beebe Development Council will announce VISION 2000, a major gifts campaign to benefit the proposed Student Center. A goal of \$300,000 has been set to purchase fixtures and furnishings for the new building. Bill Phillips of Little Rock is honorary chair of the VISION 2000 campaign.

The multimillion dollar Student Center will house various student services that are now scattered throughout the campus--services such as the Learning Resources Center, the Counseling Center, food services, student lounge areas and multipurpose rooms. If everything goes as planned, the new Student Center will be ready for students in 1999.

The Distance Learning Center will be a classroom/office complex for the recently initiated four-year and graduate degree programs offered by ASU - Jonesboro. Some of the classes will be taught by interactive video while others will be taught by instructors from ASU and ASU - Beebe.



NEW DEVELOPMENT COUNCIL MEMBERS -- Seven new members have been named to the Arkansas State University - Beebe Development Council. Named to the major gifts division of the council are, standing left to right, Jim Wooten of Beebe, Randy Busbea of Cabot, Charles George of Cabot, Chairman Garth Martin of Little Rock and Joe Park of Cabot. Seated, l to r, Dr. Harold Keith Short of Jacksonville, and Dr. John Vandiver of Heber Springs. Not pictured is Randy Harrell of Beebe. Martin is a charter member of the council and volunteered to head the new division. The new members will join 12 others on the Development Council Board which serves in an advisory capacity to the recently established ASU - Beebe Office of Development.

Baccalaureate, Graduate

Continued from page 1

term begins in late August.

The course selections were the result of two months of research to determine which degree programs would best serve the educational needs of north-central Arkansas. Students, educators, industrialists, business persons and employees were surveyed to determine what programs would be offered.

The addition of the four-year degree and graduate degree programs is a milestone for ASU - Beebe and will add a new dimension to the educational opportunities of north-central Arkansas. However, ASU - Beebe will remain a two-year educational institution offering associate of arts and associate of applied science degrees as well as one-year certificates. The baccalaureate and graduate degrees will be awarded by ASU of Jonesboro.

ASU began offering a limited number of upper-level courses on the ASU - Beebe campus two years ago. Now, students who have just finished high school, or those who may want to begin or return to college to advance their careers, may complete an entire four-year or graduate degree program at ASU - Beebe in certain areas.

ASU - Beebe Awarded For Service To CLEP Program

Arkansas State University - Beebe was recently selected by the College Entrance Examination Board to receive the "1996 Rekindle the Flame" award. ASU-Beebe was one of approximately 500 corporations and colleges nationwide and twelve statewide to receive the award.

Toland Receives Outstanding Service Award

The Arkansas Association of Student Financial Aid Administrators awarded the Outstanding Service Award for 1996-97 to ASU - Beebe's Rita Toland at the spring conference held in Fort Smith. This award recognized outstanding contributions to the financial aid community. Since its inception, fewer than 10 people have been recipients. Rita is the second ASU - Beebe employee to receive this award. Ben Pickard was ASU - Beebe's first recipient in 1994. ASU - Beebe is the only institution with two recipients of this service award.

Recipients of the award are nominated by their peers in the Arkansas financial aid community. Nominations are based on achievements and service to state and regional organizations and outstanding accomplishments within the state. The Outstanding Service Award is the highest award given to active financial aid personnel on a yearly basis.

Both Pickard and Toland have served the State Association as president and as board members on the Regional Association Executive Board. They have both served on numerous financial aid committees and boards through the Arkansas Department of Higher Education.

This commendation recognizes participation in the Winning Edge Campaign through the use of the College Level Examination Program (CLEP). The campaign is an effort to inform employed persons that by scoring high on CLEP exams, they may be able to enter college with several credit hours.

As part of the Winning Edge Campaign, Dr. Ruth Couch, vice chancellor for academic affairs, and Cathy Long, who coordinates CLEP on campus, worked with CLEP to provide the appropriate promotional materials which were then distributed to area corporations by Keith McClanahan, industrial relations coordinator. As the corporations shared the information with their employees, it opened up higher educational opportunities for those employees.

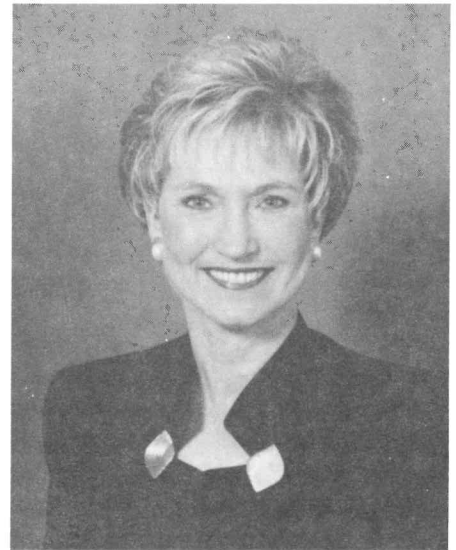
"I am pleased that the efforts of ASU-Beebe were recognized," stated Dr. Couch. "But I'm especially glad ASU-Beebe could be of service to the corporations."

Corporate CLEP and its partner businesses and schools are devoted to responding to employees' desires to extend their learning opportunities and, as a result, continue to support employee higher education.

Business Student Wins State Speaking Contest

T.J. Knight of Beebe won first place in researched persuasive speaking at the recent Health Occupations Students Association conference in Little Rock. After winning the state contest, she represented Arkansas at the national competition in California in June.

Knight is working toward an Associate of Applied Science in business technology, medical records technology emphasis.



Dianne Tiner

Tiner To Oversee ASU Programs At ASU - Beebe

Dr. Dianne Tiner has been appointed assistant to the chancellor at Arkansas State University - Beebe, announced Chancellor Eugene McKay.

Dr. Tiner's primary responsibility in the new position will be to oversee and coordinate the four-year and master's degree programs recently initiated at ASU - Beebe by its parent institution, ASU at Jonesboro. She will also teach some of the upper-level courses. "Because of her experience in the classroom and in other duties with ASU - Beebe, we feel Dr. Tiner was an excellent choice for this new position," Dr. McKay said.

Dr. Tiner joined ASU - Beebe in 1985 and has held the positions of counselor and associate professor of psychology. She has also worked in developing articulation agreements for the university.

Dr. Tiner is an officer in the Arkansas Association of Two-Year Colleges and a member of the Arkansas Academic Advising Network. She is also a member of Phi Delta Kappa and is a past president of Delta Kappa Gamma Society International, Beta Beta Chapter.

CADD Program One Of State's Best

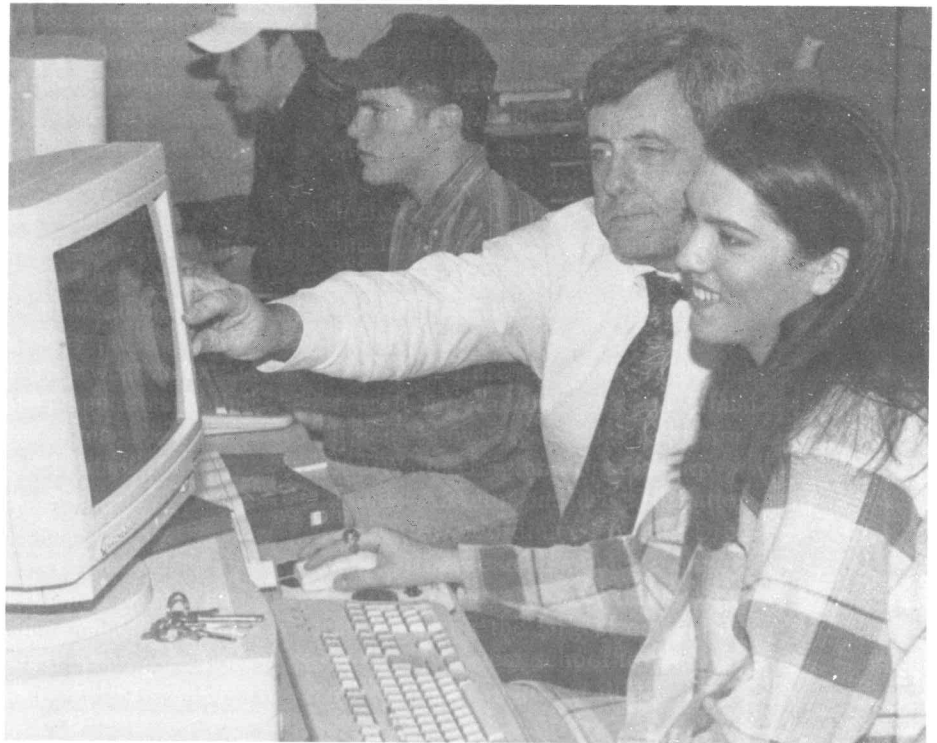
The Computer Aided Drafting and Design (CADD) program at ASU - Beebe's Arkansas State Technical Institute has been recognized as one of the top programs among two-year institutions of Arkansas.

The Arkansas Department of Higher Education recently sent a two-man team of drafting administrators to evaluate and make recommendations for the CADD programs at two-year institutions. After reviewing the program at ASTI, the team rated its CADD program excellent. ASTI's program was one of three in Arkansas that received such a rating.

"We are pleased with the outcome of this review, but not really surprised," said Larry Haile, director of Arkansas State Technical Institute. "We have strived to provide the best program possible for our students and that includes top-notch instructors and state-of-the-art equipment. We also review our programs yearly to make sure it's keeping pace with modern technology."

The CADD program has been a staple in the ASTI curriculum since the institute became a part of ASU - Beebe in 1985. James Darnell joined the ASTI faculty in 1989 and now heads the CADD program.

After reviewing the ASTI program, the panel presented an evaluation to the



James Darnell, head of the Computer Aided Drafting and Design program at Arkansas State Technical Institute, works with sophomore Erica Burns during a CADD class.

Department of Higher Education which reads, in part: the program has up-to-date equipment; course offerings are of good quality; goals of the program

are clearly stated and relate to the current level of technology; and the faculty are involved in staff development and student advisement.

New Scholarship Established

A new scholarship program has been established at Arkansas State University -Beebe. The Incentive Scholarship is now available to first-time entering students who meet certain qualifications.

The scholarship is open to students who have a composite score of 22 or better on the ACT test and are not receiving any other ASU - Beebe academic scholarship. The one semester stipend will pay half of the student's first semester tuition. Persons interested in applying for the scholarship should contact the Chairman of the Scholarship Committee at ASU - Beebe, 882-6452.

Ten Faculty Members Named To Who's Who

Ten Arkansas State University - Beebe teachers have been included in the fourth edition of *Who's Who Among America's Teachers*, 1996.

Named to the honor list were Dr. Satinder Bains, associate professor, chemistry; Dr. Ruth Couch, professor of English and now vice chancellor for academic affairs; James Darnell, associate professor, CADD; Teddy Davis, assistant professor, political science and geography; Wilene Leach, assistant professor, mathematics; Jack Raber,

assistant professor, business; Johnny Redd, assistant professor, English; Thomas Reilly, assistant professor, history; Dr. Dianne Tiner, associate professor, psychology; and Lugene Gilbert Wood, assistant professor, medical laboratory technology.

The ASU - Beebe teachers were selected by one or more former students who themselves were listed in either *Who's Who Among American High School Students* or *The National Dean's List*.



Hazel Dickey

Dickey Elected Chairman Of SBEA

Dr. Hazel Dickey, chair of the Division of Applied Arts, was elected chairman of the Two-Year College Division of the Southern Business Education Association for 1997-98. Dr. Dickey was elected at the annual SBEA convention held recently in Jacksonville, Fla.

SBEA is a regional affiliate of the National Business Education Association. The purpose of the organization is to serve its members involved in instruction, administration and research in business education. SBEA provides several facets of leadership training to assist its members in developing competent, productive people to function in a global, competitive society.

Over 450 business educators attended the annual convention. As an Arkansas delegate, Dr. Dickey participated in a variety of sessions addressing distance education, telecommunication, information management, hands-on computer technology, and leadership development.

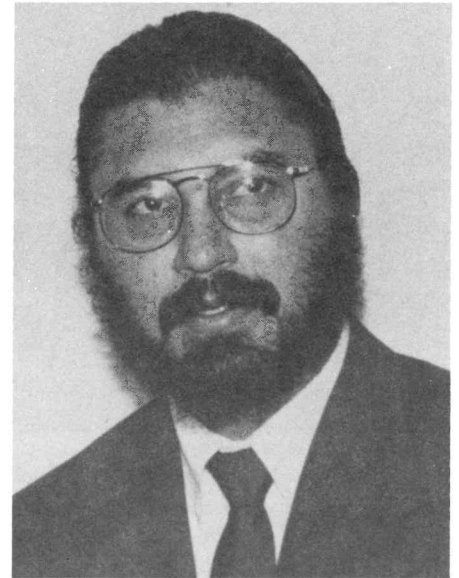
Bains Gets Teaching Honor

ASU-Beebe chemistry teacher Satinder Bains was recently nominated for recognition as 1996 Outstanding Faculty by the Arkansas Association of Two-Year Colleges. Dr. Bains was one of 14 two-year college faculty members recognized by Governor Mike Huckabee in ceremonies at the state capitol.

Criteria for the award included written recommendations from faculty and administration, a history of successful teaching and a written philosophy of teaching. Dr. Bains, in his 11th year as a teacher, views teaching as a way of life and not merely a job. His philosophy is "the most important aspect of teaching is caring." He believes that "settings must be created where ignorance can be exposed, where persons help each other sharpen ideas..."

Dr. Bains began his teaching career part-time in Bombay, India. He was working in industry and teaching night classes. After a few lectures, he knew that he wanted to teach full-time.

Dr. Bains enjoys teaching simply



Satinder Bains

because of the satisfaction he gets from it. "I think satisfaction comes in helping somebody realize their goals. There's more of a sense of achievement," he said.



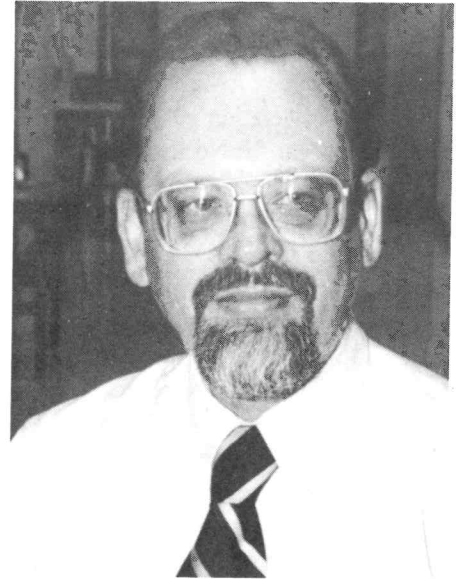
SIX ASU - BEEBE EMPLOYEES WERE HONORED recently for their volunteer work in state and local organizations. Pictured above with Governor Mike Huckabee at a governor's mansion reception are, from left, Kathy Langston who worked with United Way of White County; Addie Banks, United Way of White County; Laveda Freeman, American Heart Association; and Charlsie Moore, United Way of White County. Not pictured are Nancy Jackson who has worked with United Way of White County and Jeannie Lindsey who worked with the American Red Cross and as a volunteer aerobic instructor for senior citizens of this area.

New Summer Session Added

A new concentrated study program was initiated this summer at ASU - Beebe. An "intersession" was added to the summer scheduling which allows students to complete a three-hour college course in 11 days.

"This session is designed for students who may have a special need to complete a three-hour course in a short amount of time," said Dr. Ruth Couch, vice chancellor for academic affairs. "The classes are like any other, but are in a concentrated time frame."

The first intersession began May 14 with classes from 8-12:30 p.m., Monday through Friday. The session concluded with final exams May 29.



Fred Floodstrand

Floodstrand Achieves Rank Of Professor

Dr. Fred Floodstrand, chair of Math and Science Division of ASU - Beebe, has been promoted to the rank of professor.

Dr. Floodstrand began his tenure at ASU - Beebe in 1989 as Math and Science Division chair and physics and physical science teacher. He is a member of the Arkansas Math Association for Two-Year Colleges, Union of Concerned Scientists, Arkansas Meteorological Society, and the American Association of Physics Teachers for Two-Year Colleges.

Dr. Floodstrand came to ASU - Beebe from the University of Wisconsin where he served as assistant professor of mathematics. In addition to his teaching career, Dr. Floodstrand has worked as an electronics engineer, an equipment specialist, a physicist and a research and development engineer. He received his Ph.D. in physics from New Mexico State University.

Four From ASU - Beebe Elected To Two-Year College Offices

Four faculty and staff members from Arkansas State University - Beebe were elected to offices of the Arkansas Association of Two-Year Colleges at the organization's annual meeting in Hot Springs.

Dr. Eugene McKay, chancellor, was elected secretary of the presidents/chancellors division and Dr. Mark Taylor, director of guidance service at ASU - Beebe, was elected vice president of the administrative and professional staff division.

Dr. Dianne Tiner, assistant to the chancellor, was voted president-elect of the faculty division, and Cindy Sharp, administrative assistant in the ASU - Beebe Student Affairs Office, was elected secretary for the classified staff division.

In addition to the new AATYC officers from ASU - Beebe, Jennifer Methvin of ASU - Beebe/Newport was installed as president of the faculty division after serving last year as vice president and president-elect.

The AATYC is made up of two-year

public colleges throughout Arkansas.

In addition to providing leadership and professional development to its member institutions, the AATYC promotes higher education excellence for the benefit of students, business/industry, educators and citizens.

ASU - Beebe personnel also made several presentations during the annual meeting. Dr. Tiner and Gerre Wisdom, assistant professor of reading, gave a presentation on the freshman seminar program at ASU - Beebe; Vice Chancellor Ben Pickard spoke on legal issues facing college administrators; and Dr. Taylor and Rae Thomas spoke on the Leadership Council that recently replaced the traditional Student Senate at ASU - Beebe.

ASU - Beebe/Newport's Pam Cicirello made a presentation on motivational leadership and an ASU - Beebe/Newport faculty panel made up of Methvin, Duane Doyle, Ike Wheeler, Tanya Hagler and Terri Reno combined for a presentation on the faculty getting involved with recruitment.

Alumni News

Eddie Wood, '81, superintendent of Riverview School District, and this year's recipient of Arkansas Rural Education Association's Superintendent of the Year for Northeast Arkansas, recently retired after 35 years of service in education. Wood taught math for four years at Humphrey School District and five years at Judsonia School District. He served 11 years as Judsonia principal and nine years as the district superintendent. Wood has served the past six years as Riverview's superintendent.

Glenda Stephens, '89, serves as Director of Nursing for Byrd Haven Nursing Home in Searcy.

Major Robert W. Lashlee, Jr., Ph.D., retired from the U.S. Air Force in July and began his new career as vice president and senior analyst for RF Microsystems, Inc. in Colorado Springs, CO.

Linda Jenkins, '83, Beebe High School physics and chemistry teacher, along with 16 other Arkansas physics teachers, have developed portable laboratory experiment modules which will be made available to physics teachers throughout the state next year.

Abby Archer, '95, worked as a scenic art apprentice in Daytona Beach, Florida last summer. As a senior theatre major at the University of the Ozarks, she appeared in several university productions. She is the daughter of Raymond and Wanda Archer of Beebe.

Cooper J. Mann, '96, worked on the theatre department props crew at the University of the Ozarks. He has appeared in several university productions and is the son of Dr. Floyd Mann and Annieta Mann of Beebe.

Bill Leach, '94, Rose Bud Elementary School principal, has served in education for 26 years. His wife,

Willene Leach, is a college algebra teacher at ASU - Beebe.

Mark Pate, '90, became an associate in the law firm of Aydelott & Hannah. He is a graduate of Bald Knob High School and has lived in the area for 27 years. Pate graduated from law school in 1996. He is a member of the United States Naval Reserve.

Phyllis Goodin, '95, is the program coordinator for the new White County Domestic Violence Prevention Inc. The center also serves as a speaker's bureau for groups and organizations interested in learning more about domestic violence in the community and how the program works.

Lt. Kyle Osborne, '83, of the Searcy Criminal Investigation Division was among 94 officers recognized by the National Law Enforcement Credentialing Board in Washington, D.C. Osborne is a 17-year veteran of police work with 15 spent with the Searcy Police Department. Osborne, formerly of McRae, was the only officer in Arkansas to receive the national accreditation.

Carol Reed, '53, and his wife **Loretta Reed**, '55, recently donated land access to Lake Barnett near Floyd which was named Reed Landing. Reed, who lives in Beebe, donated two acres of land off Washburn Road to the Arkansas Game and Fish Commission who constructed a ramp. The project also included bank fishing access, fishing jetty, parking area and concrete picnic tables.

Garrie Massengale, '80, special education supervisor at Wilbur Mills Co-op in Beebe and supervisor of the Searcy Girls Softball Committee was honored for his 32 years of service to youth. He was presented a plaque by

James Stake, '71, of the Searcy Girls Softball Association.

Stuart Dalrymple, '76, of Searcy, owner of Coldwell Banker Powell Realty, has been involved in many of the recent development projects in Searcy such as Old Towne Plaza, First Step pre-school facility, and Country Squire Planned Community.

Terry Murphy, '74, is a partner in Club West Estates, a new development community off Highway 36 west of Searcy.

Ricky White, '93, won Arkansas State Champion Auctioneer 1997. He also held the title of State Champion Rookie Auctioneer from the previous year which makes a first in Arkansas history for a rookie to win the state champion title the next year. White is employed with Mid-Ark Auction in North Little Rock and is the son of Pam and Ricky White of Beebe.

Lynn Austin Bliss, '76, is an administrative assistant to the vice president and travel manager for Potlatch Corporation in McGehee. She is also co-owner with husband John David Bliss in Austin-Bliss Farms and stockholder of McGehee Producers Gin and Fertilizer Company. She is a member of Arkansas Business and Professional Women, Arkansas Appaloosa Horse Club, National Business Travel Association and has conducted seminars on variety of business topics.

Judy Kubisiack, '79, vice president of First National Bank, has been elected Arkansas district president of Financial Women International. She is on the board of Central Chapter of American Institute of Banking and the White County Rape Crisis and is a member of the Searcy Business and Professional Women.

Mike Hutsell, '71, was promoted to senior vice president of bank

Alumni News

operations with First Security Bank. He is a member of the American Institute of Certified Public Accountants, Searcy Chamber of Commerce and Searcy Kiwanis Club.

Jill Becton, '95, a journalism and public relations graduate, began work as a district aide for Congressman Vic Snyder.

Devona Brannon, '78, was recipient of Cabot's Top Citizen Award for 1996. A retired teacher, Brannon was instrumental in getting a new building for the public library.

Dr. Belinda Shook, '83, received Elementary Principal of the Year for Wilbur Mills Educational Service Cooperative Zone. She has been principal at the Beebe Elementary School for the past five years.

James Washburn, '61, recorded the golfer's dream last March at River Oaks golf course in Searcy. He made a hole-in-one on the 157-yard 11th hole using a 6-iron.

Billy Cunningham, '94, is a K-9 officer with Cabot Police Department and works with his dog, Nikko. Last fall, Cunningham and Nikko gave a drug presentation at ASU - Beebe.

We Want To Hear From You . . .

We want to include as much information as possible about the alumni of ASU - Beebe in *Meeting The Challenge*. Please send us information you would like to have included in this publication.

Name _____ Last year at ASU - Beebe 19 ____
Address _____ City _____ State ____
Employer _____ Title _____
Comments _____

Mail to: Alumni News, ASU - Beebe, P.O. Box H, Beebe, AR 72012-1008

Patsy Pipkin, '84, is currently business manager at the Bald Knob School District. She also is a newspaper columnist for Searcy Daily Citizen and has written a book on her experiences as a columnist.

Richard Zimmer, '82, owner of Zimmer's Small Engine in Beebe, is active in Beebe Chamber of Commerce, Beebe Kiwanis Club, and the Antioch Volunteer Fire Department. He has volunteered each year at Beebe Christmasfest and Beebe Flag Day.

Susan (Berry) Winkler, '75, is a home economist with the Arkansas

Department of Health. She travels six counties around her hometown of Des Arc. She also serves as a lay leader in the First United Methodist Church at Des Arc and recently was a featured speaker at a Stuttgart church in an observance to recognize work of United Methodist Women.

Janet (Williams) Kariya, '71, opened Jan's Catering in Searcy in December, 1995. Formerly, she taught school at Searcy and Bradford for 18 years. Her husband, **Chris**, '71, works at Commercial Printing and helps in the business.

Faculty & Staff News

Cathy Long was elected president of Arkansas Academic Advising Network. She is a charter member of the organization and was instrumental in the formation of the advising network.

Teddy Davis was selected by the student Leadership Council for the 1997 Positive Teacher Award.

Rita Toland serves as president of the Arkansas Association of Student Financial Aid Administrators. She also serves as a board member of the Southwest Association of

Student Financial Aid Administrators. Toland is also a member of the Arkansas Emergency Secondary Loan Program advisory committee and during the past year she has made presentations at two AASFAA conferences and at the Oklahoma state association's conference.

Qifang He, assistant professor in physical science, authored an article published in the March 20 issue of *Applied Optics*. Entitled "Theory of Photothermal Spectroscopy in an Optically Dense Fluid," the article

was based on research done by Dr. He while a doctoral student.

Bill Long, chair of English and Fine Arts, was one of ten judges across the state for the Arkansas Young Artists Association competition. He also judged the exhibits at the Prairie and Lonoke county fairs.

Phil Petray will be the facilitator for ASU - Beebe's first telecourse to be offered this fall. Petray will teach Intro to Sociology via AETN.

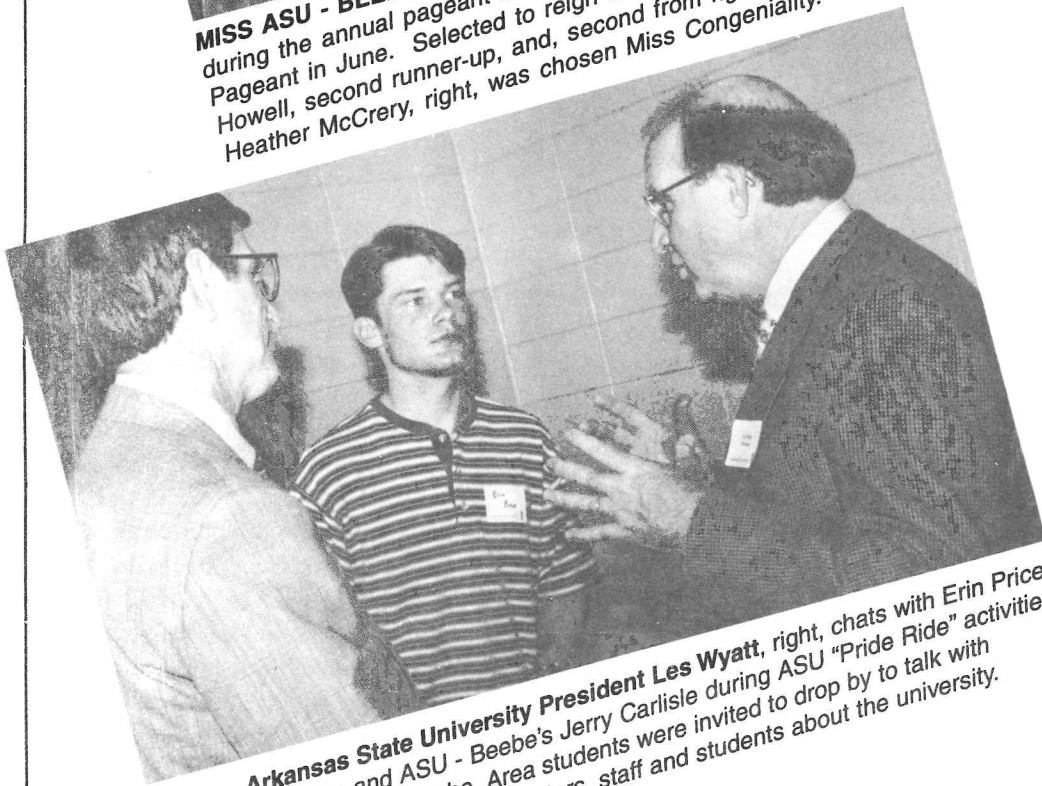
Dena Prior serves as chair of the Vendor Committee of the Arkansas
Continued next page 12



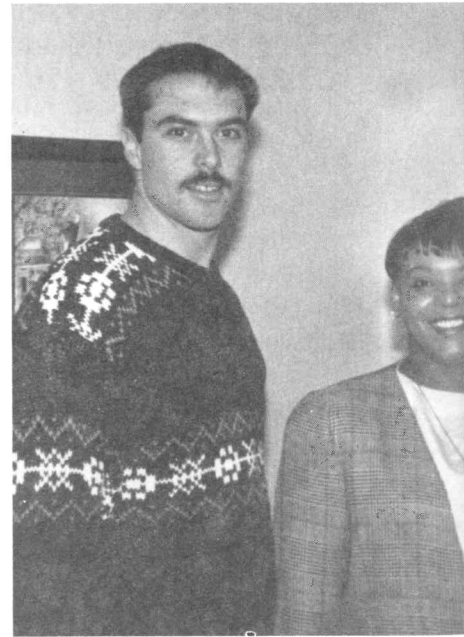
MISS ASU - BEEBE--Brandi Linville, second from left, was chosen Miss ASU - Beebe during the annual pageant and represented the university in the Miss Arkansas Pageant in June. Selected to reign with the new title holder were, left, Robyn Kay Howell, second runner-up, and, second from right, Bethany Williams, first runner-up. Heather McCrery, right, was chosen Miss Congeniality.



TOP AWARD WINNERS--Amy Cl Beebe were presented Arkansas awards, the Citizenship Award, a banquet. The Citizenship Award is but also for contributions to the u activities, and potential for future.



Arkansas State University President Les Wyatt, right, chats with Erin Price of Beebe and ASU - Beebe's Jerry Carlisle during ASU "Pride Ride" activities held at ASU - Beebe. Area students were invited to drop by to talk with ASU-Jonesboro administrators, staff and students about the university.



UNITED WAY DONATION--The Ag Club o recently donated the proceeds of the club White County. Ag Club president Paul Jen Banks, ASU - Beebe's loaned executive to Wisdom, left, looks on. Overall, ASU - Bee United Way of White County fund drive.



of Rose Bud and Paul Jenkins of e University - Beebe's highest university's annual awards t only for academic achievement, sity, participation in co-curricular ess.



HARVEST FEST QUEEN--Amy Clark, center, of Rose Bud was crowned Harvest Fest Queen during festivities at Arkansas State University - Beebe. Janis Felster, left, of Searcy was voted first runner-up and Natasha Brown, right, of North Little Rock was second runner-up. The Harvest Fest royalty was chosen by student body balloting and the queen was crowned at ASU - Beebe's annual Harvest Fest dance.



ansas State University - Beebe ili luncheon to the United Way of right, presents a check to Addle ited Way, as Ag Club sponsor Chuck ontributed some \$3,200 to the annual



WELCOME BACK--The Beebe Chamber of Commerce welcomed ASU - Beebe students back when the fall semester began and provided plenty of goodies for the occasion. Chamber member Marilyn Cole passes out soft drinks with insulated jackets to go with hamburgers, fries, popcorn and other goodies.

Faculty & Staff News

Association of Student Financial Aid Administrators. She also serves on the AASFAA Conference program committee.

Dr. Mark Taylor serves on the executive boards of the Arkansas Association of Two-Year Colleges, the Arkansas College Personnel Association, the Arkansas Association on Higher Education and Disability, and the ACT Arkansas Council. Dr. Taylor has also made presentations at nine such professional conferences during the past year.

Dr. Shirley Powell, professor of business, conducted a seminar on careers at Arkansas Girl's State.

Rae Thomas presented "Leadership Council: A New Model of Student Government" at the Arkansas Association of Two-Year Colleges conference. She also conducted a training presentation at the Arkansas Counseling Association on preparing students to enroll at a two-year campus, along with programs at Lyon College's Student Affairs Professionals Week and at UCA's Panhellenic Council.

Bob Mitchum, assistant professor of business, has taught several seminars for persons renewing real estate licenses. Thirty-five persons have completed these seminars.

Debbie Beeman and **Daphne Perkins** served as facilitators at the National Tutoring Association Conference. Beeman will serve on the association's program committee next year.

Dr. Dianne Tiner presented a program segment entitled "Helping Skills for Adult Educators" for the Arkansas Association for Continuing and Adult Education.

Tonia Spradlin participated as a discussion group member in a presentation at the Arkansas Association for Developmental Educators Conference.

Cindy Sharp serves as a board member of the Arkansas Association of Two-Year Colleges.

Ben Pickard served as president of the Southwest Association of Student Personnel Administrators. Pickard continues to serve as a board member of the Arkansas Student Loan Authority and recently made a presentation "Legal Issues and Litigation" at the Arkansas Association of Two-Year Colleges Conference.

Barry Farris, assistant professor of agriculture, received an honorary FFA degree from Arkansas Future Farmers of America for his service to the organization. Farris represented Arkansas in judging for national proficiency awards for the National FFA Convention held in Kansas City.

Dr. Vicki Wicker and **Dr. Dianne Tiner** have formed a partnership with Beebe Public Schools to assist in the application for a grant for funding to enable needy children to attend Beebe's after-school care program. Students in the education courses taught by these instructors are gaining experience by assisting in the program.

Dr. Fred Floodstrand, chair of Mathematics and Science, attended the physics enhancement program at Texas A&M. Part of the two-week program included a tour of NASA.

Keith McClanahan, ASTI industrial relations coordinator, completed the first year of a three-year program through the Economic Development Institute conducted by the University of Oklahoma.

Agri instructor **Chuck Wisdom** and wife **Karen** are the parents of Augustus Ray Wisdom, born June 28, 1996, 8 pounds, 3 ounces.

Macon Edwards, Institutional Research Director, finished Searcy Triathlon - swam 500 yards, biked 10.6 miles, ran 3.1 miles in 1 hour, 42 minutes, 12 seconds.

Charles Moore, electronics instructor, was the first place finisher in his age group at the Mums, Music and Muscadines festival foot race in Jacksonville. His winning time for the 5K (3.1 miles) was 22:59.

Dr. James Brent, history instructor, received his doctorate in history from Auburn University, Alabama.

Susan Backus, physical education instructor, was recently recognized for her contributions in the publication "Winning Edge Series, Aerobic Dance Exercise."

Dr. Hazel Dickey received the Outstanding District Representative Award at the annual Arkansas Business Education Association meeting and was re-elected to another two-year term on the ABEA Board as District V Representative.

Dr. Shirley Powell was nominated for Business Educator of the Year from the ABEA.

Debbie Thompson was named to the advisory committee for business education at Beebe High School.

Dr. Melissa Meador, biology teacher, and husband Keith are parents of Carl Richmond Meador, born Jan. 14, 1997, 7 pounds, 10 ounces.

Some of ASU-Beebe's community members were in harm's way of the March 1 tornadoes that ravaged Arkansas. The homes of **Buddy** and **Cynthia Griffin** and **Kay Turley** sustained extensive damage when the tornado struck in the Opal community.

Lisa Brandon, accounts payable, and husband Scott are parents of twin sons, born Dec. 21, 1996 - William Christopher, 3 pounds, 6 ounces and Dakota Scott, 3 pounds, 4 ounces.

Kay Turley was elected president of Arkansas Paint Horse Club and recommended for one of two director positions to the American Paint Horse Association.

WIST Conference Popular Among Area Youth

Focus On Women In Science And Technology

The seventh annual Women In Science and Technology (WIST) Conference was held recently at Arkansas State Technical Institute. Approximately 120 ninth grade girls plus counselors and teachers attended this all day conference representing schools from Beebe, Kensett, McRae, Vilonia, Searcy, and Pangburn. Eleven women in the fields of science and technology talked with the students telling them about their chosen professions in engineering, architecture, interior design, computer-aided drafting, chemistry, pharmacy, medical technology, nursing, veterinary medicine, computer systems technology, and computer education. This conference was made possible by the donations of Charter State Bank,



ASTI Director Larry Haile addresses some 120 young ladies from six area junior high schools prior to the breakout sessions.

Citizens Bank, Bank of Cabot, Beebe B.P.W. Club, Central Arkansas Hospital, and White County Medical Center. Knights Grocery and Beebe Pizza Hut provided lunch

for the students. The speakers donated their time to share their experiences with the students. This conference has been well received by the junior high counselors.

ASTI Electronics Gets Good Marks After Review

The Arkansas State Technical Institute's Electronics Department and Computer Systems Technology were recently reviewed by the Arkansas Department of Higher Education and were found to be in full compliance with expected standards. The programs were judged on program objectives, curriculum, lab equipment, faculty qualifications, support, student and alumni surveys. In particular, the Programmable Logic Controller lab equipment facilities were highlighted as outstanding.

The Electronics Department had a

successful year with several extracurricular activities offered. In January, the Electronics Department established the ASTI Amateur Radio Club and station KC5TPL with twelve charter members. The club serves as a means for student social and technical interaction on electronic communication which can be via radio, computer, television or satellite. Students have communicated on radio and computer to stations across the U.S., Canada, and Cuba. Club membership is open to all ASU - Beebe students.

In April, the first Auto Stereo

Competition was sponsored by the Electronics Department bringing to the campus about 45 people from surrounding areas. Trophies were awarded in three divisions: consumer, novice, and professional, with a best of show awarded in each division. Sound quality and volume were recorded by professional audio equipment. Plans are being made for next year's event.

The Electronics Department sponsored a three-day Microprocessor Seminar at ASTI. Approximately 22 people from Beebe and Searcy areas attended.

13 Students Selected For Awards

Thirteen Arkansas State University - Beebe students were honored at the annual ASU - Beebe Awards Banquet held recently at the university. The students were presented division awards for leadership and scholastic achievement in their fields of study.

Selected for the English and Fine Arts Division Awards were Cynthia Delahunt of Cabot and Stephanie O'Dell of Jacksonville. Applied Arts Division Awards, which includes departments of

business education and agriculture, went to Brent Courtney of Cabot, Paul Jenkins and Wendi Monnet, both of Beebe, and Gabrielle Peoples of Searcy. Chosen for the Education and Social Science Awards were Leah Dailey of Jacksonville, Charles Pagan of Beebe and Natalie Johnston of Romance. In the Math and Science Division, Paul Jenkins of Beebe and Janis Pelster of Searcy took the top awards.

Minerva Lanier of Cabot and Scott

Munn of Jacksonville won the Arkansas State Technical Institute Award. Amy Clark of Rose Bud and Paul Jenkins of Beebe received the university's most prestigious awards, the Citizenship Award (See photo, Pg 10-11).

Each year, one ASU-Beebe instructor is picked by the Leadership Council students for the Positive Teacher Award. This year, Teddy Davis was honored as the recipient of the award.

Fine Arts' Tradition Of Excellence Continues

The ASU - Beebe fine arts department continued its tradition of excellence with numerous productions during the 1996-97 academic year.

Shakespeare Festival

The Shakespeare Festival production of "Hamlet," directed by R.D. Williams, played to an audience of over 1,800 students from 45 high schools. Evening performances for the campus and community were also well attended.

ASU - Beebe students taking part in the 1997 production were Lisa Seigrist of North Little Rock, Stewart Roff of Cabot, Philip Sapp and Jason Ross of Searcy, Robert Arbogast of Rosebud, Kim Duval of Jacksonville, Andy Bishop of Jonesboro, Taunya Cline of Conway, Michael Keith of Searcy, Jason Grisham of North Little Rock, Stephanie O'Dell of Jacksonville, and Mollie Harrison of McRae, along with Scott Green, Jamey Bentley, David Williams, Zak Holder, Brian Wolters, Christopher Weber, Josh Estrada, Jessica Wolters, Ryan Liles, and Ian Nicholas.

Soundsations

The ASU - Beebe Soundsations made numerous appearances during the year at community and state meetings and each performance ended with loud applause from the audience. Director L.R. Chudomelka described the 1997 Soundsations as the "best group ever."

Members of the Soundsations were Cynthia

Delahunt, Tina Jones and Amy Ramsey, all of Cabot; Kim Duval and Stephanie O'Dell, both of Jacksonville; Sherry Fortner and Eric White, both of Lonoke; Cassy Fox of Beebe; Chad Johnson of Bradford; Brandi Linville and Jesse Pate, both of Pangburn; Joe Quinn of Quitman; Derric Rankins of Searcy; and Jason Ridgell of Sherwood.

Art Exhibits

In March and April the 20th annual high school art exhibit and the 16th annual junior high art exhibit were held with participation from numerous schools from throughout central Arkansas. The junior high art exhibit at ASU - Beebe is the oldest in this section of the state.

Thespian Conference

The high school thespians held their annual conference at ASU - Beebe with 300 students, representing 15 high schools from throughout the state, competing in one-act plays.

In addition, the students attended several theatre sessions during the two-day conference which featured such guests as Tatyana Belov, Russian actress and teacher, Sir Mortimer Clark, professor performing arts, Ray Horne, eastern territorial director and national ETA representative, Kerry Onxley, ETA-Louisiana state director, and Duncan Inches, Shakespearean actor and scholar.

Economic Center Provides Key Training Program

Last August, the Economic Development Center received an ADHE promotional grant for \$27,966, matched by approximately \$20,000 from ASU - Beebe, to purchase pentium based laptop computers. These top of the line computers are being used in the portable Computer Aided Drafting and Design courses. They are also used for on-site training in such diverse subject areas as Programmable Logic Controllers and many computer software applications.

The Economic Development Center continues to be heavily involved in working with business and industry and the Arkansas Industrial Development Commission in the Existing Workforce Training Program (EWTP). The EWTP makes state grant money available for industries in SIC 20-39 to help defray the cost of employee training. These grants range from 70% to 20% of qualified training expenses. From July 1996 through June 1997, the Economic Development Center wrote 22 EWTP grants. These grants and additional training courses resulted in 30 classes being conducted which trained 637 students representing 20 different companies and 7 schools. Gross revenue from these courses was approximately \$100,000 representing over 8,860 contact hours of training. This training included Programmable Logic Controllers, AutoCAD, Supervisory Skills, Statistical Process Control, Total Quality Management, Geometric Dimensioning, Industrial Electricity and Software Applications.

In keeping with industry requests for advanced training, the Economic Development Center submitted bid proposals for hardware purchases to

Computer Upgrade Brings Continuing Ed Up-To-Date

To better serve ASU - Beebe students, the community and area industry, the Continuing Education Division has upgraded its computer lab with 586 pentium computers.

In addition to student use for classroom work and Internet availability, the computer lab is used for software training sessions for local industry. Community service classes are also scheduled at numerous times throughout the year to provide instruction for particular software applications used in the business world.

The ASU -Beebe computer lab at Little Rock Air Force Base has also been upgraded to 586 pentiums to keep pace with the rapid changing world of computers.

Bob Lashlee, director of Continuing Education, is working on arrangements for courses in several high schools, including Lonoke, Hazen, Vilonia, Rosebud, Riverview, Searcy, Heber Springs and Bald Knob.

enhance the Programmable Logic Controller Course. Upon conclusion of the bid process, ASTI will have the capability to offer the "Advanced Programmable Logic Controller Course." ASTI is also developing an "Advanced Three Phase Industrial Electricity Course" to meet the specific needs of industrial manufacturing companies in Arkansas. Both courses will be available to industry in late summer.

Last spring, ASTI developed a Leadership Institute for Bryce International in Searcy. The two-year program consists of two classes per semester. Some of these classes are conducted on-site in Searcy with faculty from the ASU - Beebe business department teaching the classes. Bryce will use these classes in its supervisor development program. A person who satisfactorily completes the series of classes will have preference for supervisory posi-

tions within the company. The program has been so successful that it has been opened to other industries in the Searcy area beginning with the fall, 1997 class.

Arkansas State Technical Institute is a key component of the Arkansas Science and Technology Association's Arkansas Manufacturing Extension Network. This network is funded by both state and federal funds and provides statewide engineering and specialized expertise to manufacturers through a network of field engineers and specialists. These field engineers are strategically located in Fayetteville, Fort Smith, Little Rock, Jonesboro, and Camden to provide statewide expertise. Arkansas State Technical Institute provided training to these field engineers in Programmable Logic Controllers and three-dimensional CADD. ASTI also introduced them to the other technical training services at ASU - Beebe.

Student Services Continues To Grow

Use of ASU - Beebe student services continued to grow during the year and record numbers were recorded in several areas.

Student Financial Aid

The Student Financial Aid Office awarded over \$2,095,000 in financial aid to a record 1,236 students as of May 1. Again this year the staff provided numerous financial aid workshops at area high schools for students and their parents. Workshops were also held in conjunction with ASU staff from Jonesboro for high school counselors in central and northeast Arkansas.

Counseling Center

The ASU - Beebe Counseling Center had a record year with over 4,000 contacts with students, prospective students, alumni, faculty, staff and people from the community. The Center provided personal and career counseling, academic advising, scholarship and disability services, along with special programs for entering traditional, nontraditional and special student groups.

Counselors also assisted off-campus in disaster relief and helping area schools in crisis situations.

Testing services administered a record 646 examinations, including the ACT, the Arkansas Assessment of General Education, CLEP, correspondence and other special tests.

Disability services assisted 49 on-campus students in orthopedics and mobility, sensory areas, learning disabilities, and chronic diseases including cancer, and coordinated services both on and off campus to provide accommodations and support for these students.

Learning Center

The Learning Center assisted a record 1,596 students as of May 1, an

18 percent increase over last academic year. The Learning Center offers individual, computerized and audio/video tutorials in 76 course areas which cover all academic divisions on the ASU - Beebe campus and at the Little Rock Air Force branch.

Students attended the Learning Center over 12,500 times which represents 3,047 hours of assistance, or 73 hours each day.

The Center underwent an extensive upgrade of computer capabilities to help meet that demand and to enhance services available to students.

Upward Bound

The Upward Bound Program has 50 area high school students enrolled and 47 of those are first generation college students from low-income families.

Upward Bound provides the students with academic instruction and tutoring, counseling, cultural experiences, self-esteem activities, career awareness, college preparation and academic advisement. Students attend the sessions 26 Saturdays during the school year. High school sophomores and juniors will be involved in an expanded version of the same activities during an intensive six-week summer sessions.

Currently, three of the students plan to attend ASU - Jonesboro, all on President's Scholarships, and 11 plan to attend ASU - Beebe in the fall.

Student Activities, Leadership Council

The Student Activities and Leadership Council had a banner year, offering out-of-the-classroom entertainment and learning experiences that value-add to the ASU - Beebe educational experience.

The Organizational Fair started the year with clubs and organizations recruiting new members and the Spring Fling ended the year, offering students food and entertainment.

Other activities during the year included the Harvestfest dance, and the Leadership Council Easter Egg Hunt which offered a chance for students, faculty and staff to bring their young children to campus.

The Future Educator's Club held a craft fair and presented its annual Talent Showcase to raise funds for the Walter England Scholarship Fund. Alcohol and drug education activities, coordinated by the Drug Education Team, included campus activities during Red Ribbon Week and sending the largest delegation from a two-year school to the annual workshop in Little Rock.

Lecture Concert Series

The Lecture Concert Committee sponsored another successful season of productions that included the Glenn Miller Orchestra; Mark Twain on Stage; hypnotist Fredrick Winters; Giacomo Puccini's La Boheme Opera; and Red, Hot, and Cole Porter.

All Lecture Concert performances are open to the public for a nominal fee and are free to ASU - Beebe students.

Intramural Sports

Over 400 ASU - Beebe students and employees participated in intramurals during the year--choosing from 20 individual or team sport activities.

Campus Police

At a time when many college campuses are facing crime problems, ASU - Beebe had no serious crimes on campus during the year.

Over 2,700 vehicles were registered on campus.

Manning's Research Leads To Discovery

An obscure species of tropical shrub found only in southwest Cameroon now carries the name of a revered Carleton College biology professor and his wife, thanks to an Arkansas State University - Beebe biology teacher.

Dr. Stephen Manning, a 1962 graduate of Carleton College in Northfield, Minn. and now assistant professor of biology at ASU - Beebe, has honored William and Elizabeth Muir by giving their name to a species of shrub, *Pavetta muiriana*. Dr. Manning discovered the shrub in Cameroon, Africa, while conducting his doctoral research in the late 1980s.

Dr. Manning said that naming the plant after the Muirs was a way to recognize their impact on his life as a biology student at Carleton. He took classes from William Muir, but said that *muiriana* was also named to honor Elizabeth, who did much of Muir's teaching for him in his later years. When his health began to fail in the late 1960s --diabetes led to blindness -- Elizabeth would deliver his classroom lectures. William Muir died in 1985 at the age of 57.

"I really liked Dr. Muir because he was extremely enthusiastic and went out of his way for his students," Dr. Manning said, adding that he was convinced enough by Muir's enthusiasm to choose botany over sociology as a major at Carleton. "You'd see him out at 2 a.m., working in the greenhouse."

Dr. Manning has spent parts of his later life in similar greenhouse-like conditions; he spent a year in the tropical rain forests of southern Cameroon while on his doctoral dissertation. In that recently-published work, he completely reclassified the relatively unknown *Pavetta subgenus baconia*, flowering shrubs indigenous to tropical Africa and Cameroon. This subgenus was last extensively classified in the 1930s.

In the process of reclassification, for which he collected specimens of *Pavetta subgenus baconia* from the field

and borrowed samples from botanical gardens, Dr. Manning discovered 10 new species of that subgenus. His discoveries, from *Pavetta camerounensis* to *Pavetta tenuissima*, ran the total to 29 species of *Pavetta subgenus baconia* in Cameroon.

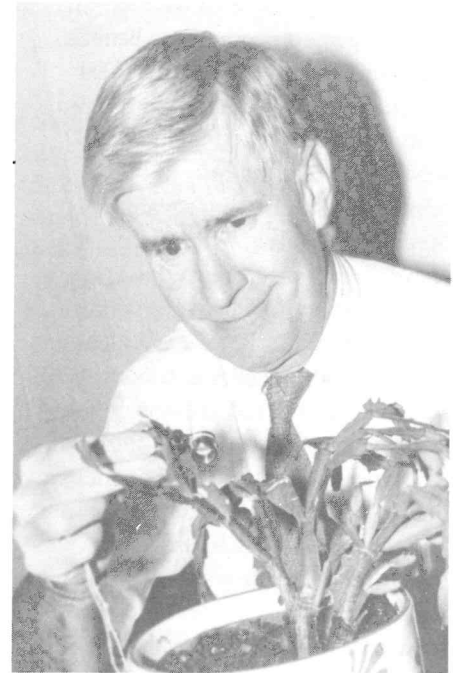
Dr. Manning said that bestowing a name upon a species is a great thrill for any scientist. "It's a rewarding sort of thing, but you have to guard against making something a new species just to feel good," he said.

In many cases, the fine line between unusual samples of a new species and new species was difficult for Dr. Manning to identify. Leaf and flower characteristics, coupled with the specimen's location, often distinguished new species from established ones.

Those distinguishing characteristics typically became incorporated into the species' scientific nomenclature -- for instance, a Manning discovery, *Pavetta tenuissima*, was so named for its thin veins on the leaves, from the Latin *tenuitas*, or thin. But in the case of *muiriana*, a distinctive influence on the discoverer became the species' name.

Dr. Manning began his field research for his doctoral dissertation in 1986, the year after Muir's death. His path to his current status as plant discoverer, however, was anything but direct; after a stint in the Peace Corps, Dr. Manning turned away from botany to practice law for the next 12 years. Disenchanted with law, he returned to botany with a certain sense of urgency, as if making up for lost time. He estimates that another 30 new species of his "baby," the *Pavetta subgenus baconia*, exist in Cameroon alone.

But the relatively low population density of *Pavetta subgenus baconia*--about one specimen every half mile -- and Dr. Manning's own busy teaching schedule preclude rapid progress in further reclassification. He'd like to address criticism he received for limiting



DR. STEPHEN MANNING'S research in Cameroon, Africa led him to discover a new variety of plant. Above, the ASU - Beebe assistant professor of biology checks out a plant of a more domestic variety.

his original dissertation to Cameroon; as he said, plants don't limit themselves to political boundaries. "I wish I could continue working on the whole subgenus, because I feel that it's unfinished," he said.

For Dr. Manning, an ultimate sense of urgency is fueled by the rapid destruction of the world's tropical rain forests. Tragically, according to Dr. Manning, countless unknown species, not just flowering shrubs, will be lost to science forever if deforestation continues at its current pace.

"A lot of species will never be described, because they're found in rain forests," Dr. Manning said. "Species are disappearing, and we soon won't be able to have the opportunity to look at specimens to ever know if they're a new species. Knowing that really motivated me to work with tropical plants."

Local Support Helping ASU - B/N Grow

Arkansas State University - Beebe/Newport continues to benefit from the support given by the local community in the form of scholarship funds of over \$80,000 for the 1996-97 school year. The majority of this scholarship funding is provided by Medallion Foods of Newport and the Newport campus through the Arkansas State University - Beebe/Newport Charitable Foundation, Inc. With a regular enrollment of approximately 450 students for both fall and spring, many students have received local financial assistance that has proven beneficial to the pursuit of their educational goals.

A variety of activities and events took place during this school year. Brown Bag Lecture Series Committee sponsored several presentations. Dr. Michael B. Dougan, professor of history at Arkansas State University, gave a presentation titled "William Jefferson Clinton - He's Just Our Bill, or the End of Arkansas History." Associate Professor of Computer Science at Arkansas State University, Dr. Edward Hammer and spoke on robot assembly and gave a demonstration of 'stand alone' and 'remote control' type robots using model arms and legs. Dr. Stan Trauth, professor of zoology at ASU, presented a slide show on the biology of the alligator snapping turtle. Mark Twain, performed by Jerry Salley, presented "The Reports of My Death Have Been Greatly Exaggerated: A Few Minutes With Samuel Langhorne Clemens."

The Brown Bag Lecture Series provided students, faculty and staff with entertaining and educational experiences that were well attended. Visitors from the local community were encouraged to attend the lecture series and offer their suggestions for future programs.

The literary news magazine, *Ridge*

to River, continues to provide literary opportunities for student writers, ASU - Beebe/Newport faculty, or area residents. The magazine, published twice each year, provides a medium that encourages the development of commu-

students staffed a health station and provided first-aid services while the Truck Driver Training Department furnished refrigerated trailers and dry van storage for the storm relief effort. Several ASU - Beebe/Newport students

ASU - Beebe/Newport students pitch-in with food, first-aid, clean-up after tragic tornado strikes Jackson County.

nity-wide literary talent. The *Ridge to River* committee sponsored a 'tall tale' contest with over 100 entries received. The winners of the contest were announced at the final Brown Bag Lecture Series held in April.

A December lighting ceremony was held in which 30,000-50,000 Christmas lights were displayed around campus. The lights were donated by ASU - Beebe/Newport student Betty Ritter and her husband Leon. Several students and staff members participated in the lighting project which took several days to construct. The local television cable affiliate, Channel 15, taped the lighting event and replayed it several times for the community.

On March 1, a tornado struck many Arkansas counties including Jackson County leaving millions of dollars in damage and claiming several lives. Following the storm, students and campus personnel assisted in the relief effort through a variety of activities. The Student Union Body collected food and other needed items for storm victims in Jacksonport, Diaz, Campbell Station, and Tuckerman communities. Other students helped with the clean-up effort in Jacksonport, one of the areas hardest hit by the tornado. Practical Nursing

and employees were directly affected by the tornado.

Other activities during the year included two theatrical productions, "Harvey" and "Wind in the Willows" which were produced and directed by the oral communications faculty. The Biology Club was involved in field trips and continued their Adopt-A-Highway clean-up effort with over 30 students participating. In March, several faculty and staff coordinated the annual high school preview day, providing tours and demonstrations for prospective ASU - Beebe/Newport students. A campus picnic was held in May with lots of food and plenty of recreational activities throughout the day as students continued to attend classes.

ASU - Beebe/Newport commencement ceremonies were held May 8. Clay Curtner, vice-president of Curtner Lumber Company in Newport, presented the Commencement Address. Over 80 students received either Associate of Art degrees or technical certificates. Special guest Dr. J. Leslie Wyatt, president of Arkansas State University, extended a welcome and best wishes to the graduating class. ASU - Beebe Chancellor Eugene McKay conferred the degrees and certificates.

Special Thanks

Our Special Thanks To . . .

ASU - Beebe is honored to recognize these alumni, faculty, staff and friends who have made an investment in the university's academic programs:

Lifetime Members

Dennis and Eva Gillam
Dr. Ruth Couch
R.V. Powell, Jr.

Chancellor's Circle

Garth Martin
Elouise Scott
Charter State Bank
Lyndell Lay
Beebe Chamber of Commerce
Walter England
Sara Beth Fryar Morris
Garland Kirkpatrick
Drs. Eugene and Judith McKay
Ben and Mary Anne Pickard
Jerry and Suzanne Carlisle
Larry and Judy Haile
Jerry and Nancy Jackson
Baldor Electric Motors
Randy Colip
Doug Fry
Mr. and Mrs. J.D. Fortner
Lynn Harvey
Darrel Hall
Michele Warren
David McAfee
First National Bank
Wayne Hartsfield
Leroy Goff
Susan Taylor
Whirlpool Corporation
Howard Gossett
U of A at Little Rock
Hirak C. Patangia, Ph.D., P.E.
Educator's Club
(ASU - Beebe student assn.)
Baxter Healthcare Corp.
David Martin

Diamond Club

Morris and Dorothy Carlisle
Bank of Cabot
Joe Park
Central Arkansas Hospital
Charter State Bank
Garland Kirkpatrick
First Security/Citizens Bank
Darrel Hall
Jean Cunningham
Anniversary Club
White County Medical Center
Traditions, Inc.
John and Robin Hayes
LaVerne S. Hale
Kaye Winningham
Craig Lackie
Cindy Wright
Janie Byard
Beebe B.P.W. Club
Amber Covington
Louise England
Kazuko Sato
Arkansas State Technical Institute
First National Bank - Beebe Branch
Alan Williams
Ted Hines
Eugene James
Danny James
Ginger C. Hurst
Lula M. England Lamere
Stageworks
Dena Kimberling
Strother-Wilbourn Land Title Company
Jim and Mildred Wilbourn
Barry Farris
James C. Beard
Bill Pruitt
Hoyt H. Hilger

Friends Of The University

Skip and Becky Downing
Everette and Cathy Long
Robert Dennis Dycus
Steven D. Mitchell
Mike Barber
Clara W. Tharpe
April J. Kramer
Debbie Beeman
Joyce and Glen Jenkins
Ruthann Hefner
Stoney and LaJeana Jackson
Cindy Boyett
Kenneth W. Farish, Jr.
Lugene Woods
Bill and Lu Elliott
Brewer Hefner
Burrow's Drugs
Cross Printing
Health-Way Save-On Drugs
KPIK Radio
Rick's Discount Pharmacy
Mrs. Virginia Shanack
Westbrook Funeral Home
Acxiom, Inc.
Arkansas Eastman, Inc.
Logitech
Centre Court Sports
Columbia Weber Family Clinic
Kip Moore & Associates
Mega Technologies, Inc.
Three D Design
Yarnell's Ice Cream, Inc.
Knight's Grocery Store
Lou E. McDougal
Daniel R. England
Donnie Conyers

The ASU - Beebe Office of Development has several gift categories to fit every level of giving: Lifetime Members (\$10,000 and over); Chancellor's Circle (\$500 - \$9,999); Diamond Club (\$250 - \$499); Anniversary Club (\$100 - \$249); Friends of the University (\$35 - \$99 or couple \$50). Information on the ASU - Beebe gift clubs may be obtained by contacting Nancy Jackson, Office of Development, P.O. Box H, Beebe, AR 72012-1000 or call (501) 882-8255.

Lecture/Concert Series

Tommy Dorsey Band Highlights Series

The ASU - Beebe Lecture/Concert Series has become known as one of the best bargains in the country. Not only has top rated talent been brought to central Arkansas, but at prices that all can afford.

The 1997-98 series will be no exception. Season tickets are still \$10 and top talent is on the menu--beginning with the Tommy Dorsey Band in September.

The 1997-98 Lecture/Concert Series and performance dates will be:

The Tommy Dorsey Band September 8

Straight from the Big Band era of the 1940s, the Tommy Dorsey legend continues as the Buddy Morrow-led orchestra travels to ASU - Beebe.

The Tommy Dorsey Orchestra was recognized as one of the greatest all-around dance bands and this rendition brings that musical glory to the stage.

Radio Days October 30

This performance pays tribute to the golden age of radio--a medium that evoked amber visions of streamlined imagery, art deco facades and make-believe ballrooms from Hollywood to New York City.

The cast takes the audience on a sentimental journey of music, quiz shows, commercials and comedies that provided moral support for the American war effort of World War II.

Kevin King - Magician November 17

Kevin King offers a unique blend of clean stand-up comedy and magic that will amaze and amuse.

King is known for his wacky brand of humor. He uses a variety of strange props, and has been known to even pick-the-pockets of his unsuspecting audience.

The Mikado February 17

The Mikado has been called the greatest operetta ever written and is far and away the most successful collaboration of Gilbert and Sullivan.

The performance is produced by Riverside Light Opera Company and is a fully-staged, lavish production with live music that is worthy of the name Gilbert and Sullivan.

Dancetime March 12

Already acclaimed in 150 cities from coast-to-coast, this performance is a celebration of 500 years of courtship through dance--from the minuet through the polka through the popular dances of the 20th century.

The San Francisco dance troupe performs dances from each era of the past, dressed in more than 100 authentic costumes.



Office of Development
Arkansas State University - Beebe
P.O. Drawer H
Beebe, AR 72012-1000

NON PROFIT ORGANIZATION U.S. POSTAGE PAID PERMIT NO. 2 BEEBE, AR

ADDRESS CORRECTION REQUESTED
