

ASU - Beebe

Volume 2

MEETING THE CHALLENGE

August, 1996

Message From The CHANCELLOR

The past year has been a good one for ASU - Beebe with continued growth in student enrollment and expansion of services.

ASU - Beebe had over 2800 students last year: 1999 at the Beebe campus; 460 at the Newport campus; and over 350 each eight-week term at the Little Rock Air Force Base.

The Beebe campus received a federal grant to start an Upward Bound program. Over 50 students are enrolled in that program; students attended Saturday classes during the spring semester and the first summer term at the Beebe campus. Those students will spend five days in Washington, D.C. in early July.

The university continues to be very active in the Tech Prep program, with articulation agreements with



Chancellor McKay

several high schools in our service area.

Architects have been hired to develop masterplans for the Beebe and Newport campuses. Those plans should be ready this fall. The masterplans will give us guidance for the future development of the campuses. Enrollment has tripled at the Newport campus during the past four years. At the Beebe campus, enrollment was 693 in 1985 and 1999 in 1996. Enrollment cannot continue at that pace unless we have careful planning.

To help us with this planning as well as funding to achieve our goals, President Wyatt appointed a Development Council, chaired by

(Continued on page 2)



INSIDE

Campus Masterplan	2
Junior/Senior courses	3
New John Deere Building	4
Upward Bound	5
Alumni News	6-7
Faculty/Staff News	6
Student Affairs	10
ASU - B/Newport	11
Development Council	12
"England Challenge"	13
Lecture/Concert Series	14
Special Thanks	15



The new John Deere Ag Tech Building nears completion and will open its doors to students when the fall term begins in late August. Under the new program, students may complete two years of training and earn an associate of applied science degree in agricultural equipment technology. (Story on page 4)

Chancellor's Report

(Continued from page 1)

Wayne Hartsfield, that began operations last spring. The council has approved some plans and is working on additional plans to raise funds. Funds are beginning to come in. I feel certain that the work of this council will reap long-term benefits to ASU - Beebe.

New Programs

We started three new programs last year. The John Deere program is doing well. The new building will be completed by August and enrollment in the program is good; we expect to have a full freshman class. The Associate of Applied Science in Business Technology, which has a cooperative program with Foothills Technical Institute is doing well. A new building is being constructed on the Newport campus to house the new Arkansas Commercial Driving Institute. This program should be fully operational by January.

With so many new things developing, it has been a challenging year, but ASU - Beebe is fortunate to have so many dedicated employees committed to the achievement of our mission; I am pleased to say they are meeting the challenge and I feel confident we will achieve our goals.

Masterplan Being Developed For University Campus

Arkansas State University - Beebe has selected two firms, Brackett-Krennerich & Associates of Jonesboro and RM Plan Group of Nashville, TN., to provide the university with a new masterplan to be used in the development of the campuses in Beebe and Newport. Both campuses have experienced tremendous growth in recent years, requiring new plans to be developed to enable the university to properly accommodate the increasing number of students. The plan will reveal the Arkansas State University of the 21st century.

The objectives of the masterplan are to provide a phased building program for enrollment increases, a phased plan for utility expansion, an analysis of pedestrian and vehicle circulation with phased plans, new construction site recommendations, land acquisition recommendations based on phased campus growth and environmental and landscape improvements.

Firms were selected in January and began working on the plan in February. Surveys of the land and buildings have been conducted to provide an analysis of existing space. A building program has been developed, with information from the space analysis, and will be used to project the university's needs as enrollment increases. The final product of the project will be a schematic layout of the campus with specified locations for new buildings, student parking, traffic routes, pedestrian walkways and main entrances.

The masterplan is due for completion this fall.

LRAFB Review Produces Top Marks

ASU - Beebe's Little Rock Air Force Base program was reviewed by the Air Force Quality Education Standards process and was given several commendations and received an outstanding overall review.

The campus office of veterans' affairs received an outstanding rating in the areas of records management and processing procedures. The rating was given by the State Approving Agency for Veterans' Training and also by the Department of Veterans' Affairs.

ASU - Beebe

MEETING THE CHALLENGE is published annually by the staff of Arkansas State University - Beebe. State Hall, Palm & Iowa Streets, Beebe, AR 72012-1008. Bulk non-profit rate postage paid at Beebe, AR.

ASU - Beebe
P.O. Box H
Beebe, AR 72012-1008

This publication is distributed free of charge to ASU - Beebe personnel, alumni, and supporters of the university.

Art Students Tour Points Of Interest At Chicago

The **Art Department** toured the Chicago area during spring break. Points of interest were the Sears Tower, University of Chicago Oriental Institute Museum, Robie House, Shedd Aquarium, Field Museum of History, Art Institute of Chicago, Adler Planetarium, and the Lincoln Exhibit.

Junior/Senior Level Courses Offered

ASU - Beebe students can now work toward a bachelor of science with a major in business administration by continuing to attend classes on the ASU - Beebe campus.

Arkansas State University - Beebe, in conjunction with ASU - Jonesboro, began offering the upper level degree program in the fall of 1995. The program, termed interactive television, enables the distance learning students at the Beebe site to view the professor, ask and answer questions, and interact with students on the Jonesboro campus.

Dr. Hazel Dickey, Applied Arts Division chair, recently stated, "I am delighted that ASU has made this degree opportunity available for our students. This should enable students to complete a bachelor's degree who might not be able to if this program were not available for them."

Students may earn up to 15 credit hours per year with two courses taken in the fall and spring semesters and one course during the summer. The series of courses rotate, allowing students to begin at almost any point to complete degree requirements. ASU - Beebe began offering "Organizational Management" in the fall followed by "Business Finance," and "Principles of Marketing" during the spring semester. The course "Operational Management" is scheduled for this summer.

Sharon Been, a student in the distance learning classroom, said, "I'm excited that I've had the chance to continue my business education without having to travel off to a four-year university. I see a light at the end of the tunnel and that has made a difference." Been added that the classroom has not been much different from being in a regular classroom. "The classroom setting



"Interactive television" allows students to sit in an ASU - Beebe classroom and receive instruction from a professor at ASU - Jonesboro. The two-way TV hookup allows students to converse with the professor as well as receive instruction.

has been very pleasant which makes it easy for students in all classrooms to interact with each other. Also, everyone seems to relate well to the instructors, who have been open to our questions and answers."

Actually, ASU initially offered this new type of classroom technology at ASU - Beebe three years ago with the nursing program. When asked if the business degree program has proven successful, Dr. Steve Replogle, coordinator of distance learning programs for the ASU - Jonesboro College of Business stated, "We feel very positive because we're seeing an increase in the number of students involved in the program since the fall semester. Also, in view of the test scores for the distance learning students at the

Beebe campus, these students seem to be doing very well and in most instances, exceedingly well." Total degree program enrollment at the ASU - Beebe campus for spring semester was 19 students.

Students may begin the upper level courses after completing 54 hours of course credit; therefore, a student does not have to complete an associate degree before beginning the degree program. Courses in both degree programs may overlap, allowing much flexibility for the student.

"Arkansas State University - Beebe has expanded services through this innovative program to meet the needs of its students. We're proud to offer this program," concluded Dr. Dickey.

New John Deere Classroom Complex Opens For Fall Term

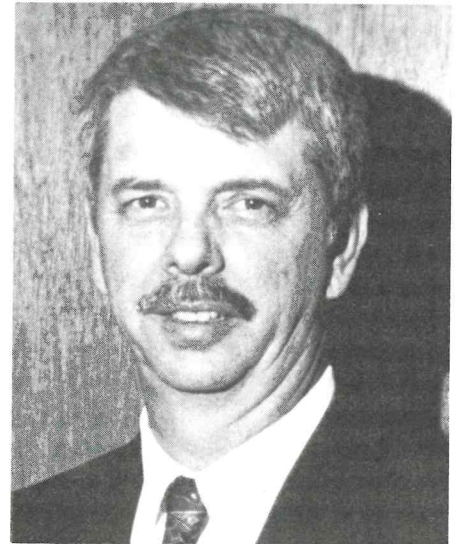
Arkansas State University - Beebe recently received a \$400,000 grant to construct a new John Deere Ag Tech building on the north edge of the ASU - Beebe campus.

The funds were released from the state General Improvement Fund

In addition to the state funds, John Deere has provided over \$1 million worth of equipment for lab and teaching purposes. The new building is expected to be ready for classes in late August.

Students who complete the two-year training program will earn an associate of applied science degree in agricultural equipment technology. The program was approved in July, 1995, by the state Board of Higher Education and the first 17 students enrolled last year. Another 20 students are expected this fall.

Students are sponsored by qualified John Deere dealers and divide their time between learning in a classroom/lab and working in the sponsoring dealership.



Bill Long

Long Selected For Arkansas Educator Award

Bill Long, chair of the English and Fine Arts Division at Arkansas State University - Beebe, was the recipient of the Arkansas Art Educators Higher Education Division Teacher of the Year Award at the Arkansas Art Educators Association convention in Little Rock. He was selected and recognized for the prestigious award by his peers for distinguished service in the field of art education for the state of Arkansas.

Long has been teaching art at ASU - Beebe since 1975 and was appointed English and Fine Arts chair in June, 1995. He was responsible for developing the university's art program and currently serves as an assistant professor of fine arts at ASU - Beebe.

After attaining a bachelor's and master's degree in art education, Long gained additional graduate hours from Harding University campus in Florence, Italy, as well as other European countries.

Long is a member of the Arkansas Art Education Association and National Art Education Association.

ASTI Program Assists Manufacturers

Arkansas State Technical Institute recently served as host to field engineers from central, west and northwest Arkansas in a program designed to aid manufacturing firms in the state.

Field engineers took part in two days of training as part of the Arkansas Science and Technology Authority's Arkansas Manufacturing Extension Network. Participants received training in computer aided drafting and design and programmable logic controllers (PLC), which are industrialized computers that control automated manufacturing processes. The field engineers will use the training to assist, as needed, manufacturing firms in Arkansas.

Dr. Charles Cole, a recent winner of the prestigious Tibbitts Award, conducted the PLC sessions and ASTI's Jim Darnell taught the CADD sessions.

Dr. Manning's Research Paper Published

Dr. Stephen Manning, assistant professor of biology at Arkansas State University - Beebe, had a research paper recently published in the *Annals of the Missouri Botanical Garden*, at St. Louis.

In Dr. Manning's article, based on several years of research including nearly a year in the field in Cameroon in west central Africa, 11 plant species new to science are

described, illustrated, and classified for the first time and nearly 20 other related species are also classified. All of the species are wild members of the coffee family which occur in the tropical forests of Cameroon. His article is entitled "Revision of *Pavetta* Subgenus *Baconia* (Rubiaceae: Ixoroideae) in Cameroon."

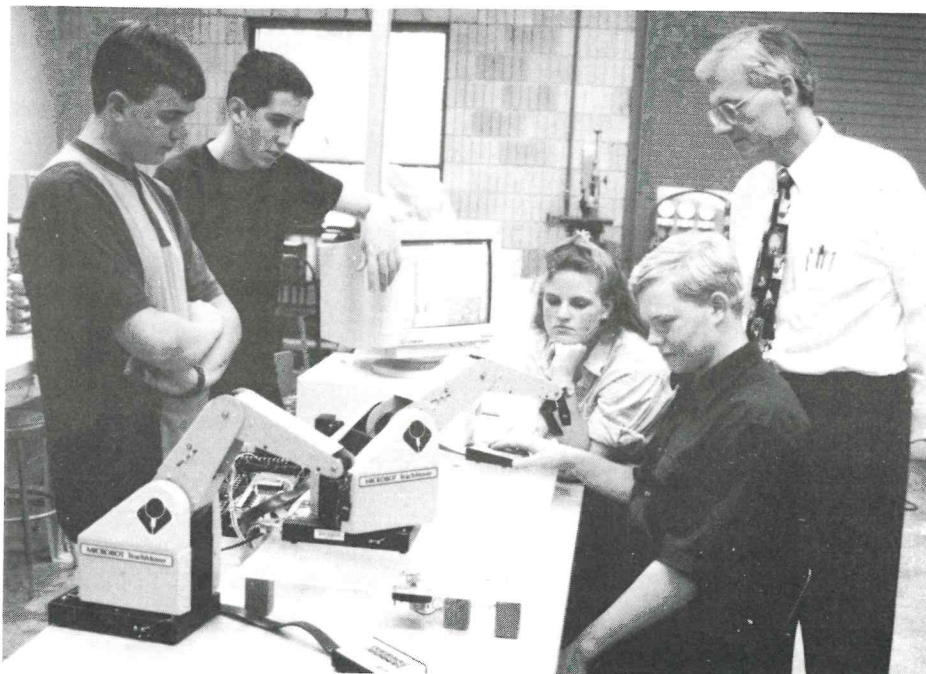
Dr. Manning has taught biology at ASU - Beebe the past five years.

Upward Bound Keys On Future Students

Arkansas State University - Beebe recently added a new program which focuses on high school students who have a desire to attend college. Upward Bound is a pre-college program for high school sophomores, juniors, and seniors and is designed to prepare these youth for education beyond high school.

Students in Upward Bound meet on the Arkansas State University - Beebe campus 26 Saturdays during the academic year. The development of academic skills necessary for success in post-secondary education is of primary importance in Upward Bound. The academic curriculum includes both basic skills and advanced courses with individual schedules determined by student need and preference. The students also receive tutoring in high school subjects in order to improve their grade point averages or to maintain above average GPAs. They receive further information and experience in career planning, college life, and cultural and social enrichment.

To qualify for Upward Bound, a federally funded program, students



Upward Bound students get an idea of college life during a five-week summer program at ASU - Beebe. Above, electronics instructor Charles Moore works with, left to right, Shaun Barger, Michael Nooner, Dorrie Baker and Kevin Sergent.

must demonstrate an academic potential for post-secondary education, be classified as a first-generation college student, and/or meet financial guidelines.

Students are recruited from

selected high schools in five counties in Central Arkansas: Cleburne, Faulkner, Lonoke, Prairie and White. Tenth and eleventh grade students may apply for the first available openings through their high schools.

College Savings Bonds Aid ASU - Beebe

The Eightieth General Assembly passed ACT 1297 of 1995 which authorized Phase II of the College Savings Bond Program. Phase II will provide funds in the amount of \$215,150,000 for the Arkansas Department of Higher Education to distribute to institutions of higher education. Arkansas State University - Beebe has been approved to receive a total of \$791,595.

ADHE will sell the bonds in increments of 30-40 million dollars.

ADHE will then distribute the funds to institutions in various categories for specific use. ASU - Beebe will receive \$177,451 for critical maintenance projects, \$500,000 for expansion of the library, \$54,376 for instructional equipment and \$36,464 for library holdings. In addition, the Newport campus will receive \$531,702 for expansion of an academic building, \$72,384 in critical maintenance funds and \$23,304 for instructional equipment. Additional

funds will be approved later in a priority equipment category, and it is hopeful additional funds will be received in the building expansion projects.

Phases I and II of the College Savings Bond Program have provided \$315,600,000 in much needed capital funds for universities in Arkansas. These funds have been instrumental in providing new facilities and equipment for the students at ASU - Beebe.

Alumni News

Elouise Scott, '45, is Emeritus Assistant Professor of English for ASU - Beebe. She resides in Marietta, GA. Her book, Then to Now, As I Recall-Family and Community History and Relationships, about McRae and its early residents, was published in 1994. She placed a copy in Abington Library at ASU - Beebe.

Duane Fecher, '72, was recently named president of Waugh Enterprises of Dallas by founder and CEO Bill Waugh. The Casa Viva Mexican Restaurant of Little Rock and Burger Streets in Oklahoma and Texas are restaurants of Waugh Enterprises and are among the establishments Fecher will oversee. Casa Viva is one example of "good customer service" that Fecher's restaurants boast.

Suzi Parker, '89, was named managing editor of August House Publishing Co. of Little Rock last February. Prior to joining August House, she was a writer for the Arkansas Democrat\Gazette.

C.D. (Curt) Bryant, '57, has been store manager of Sherwin Williams Co. on Race Street in Searcy since 1968. ASU - Beebe changed its

name from Junior Agriculture College of Central Arkansas to Arkansas State College - Beebe Branch during his tenure at the university. He and his wife Charlotte have a daughter and two grandsons.

Doyle Slaten, '51, has been director of Foothills Technical Institute in Searcy since 1977. He was assistant director for 11 years before that. The institute has changed and progressed from a vocational school to its present status and boasts some 3,000 students in a given year. The number includes high school and adult students and full time technical students.



Slaten

Ben Lowery, MD., '60, was in family practice in Searcy from 1967-1975. He has operated the Lowery Eye Clinic since 1978 when he finished his residency in ophthalmology. He was joined in his practice

by his brother, **Dr. Robert Lowery**, '63, in 1981. Their brother, **Tom**, '64, is a pharmacist in Searcy. Another brother, **Jim**, '61, is a retired Searcy High School math teacher.

David McNeill, '61, has operated McNeill Trucking Lines of North Little Rock for the past 30 years. His son, **Stephen**, '88, is also in the business. Stephen recently married the former **Rhonda Holden**, '90, of Beebe.

Wendell Nier, '63, has been with Citizens State Bank in Bald Knob for the past 12 years. He is executive vice president. Before, he was with First National Bank for 16 years.

Randy Minton, '70, is running for the District 69 seat in Arkansas House of Representatives. He is a Lonoke County businessman and former chair of the Lonoke County Republican Organization.

David Evans, '72, has been mayor of Searcy since 1991. Recent accomplishments for the city are the John E. Lightle Center for Aging on Moore Street and this summer's improvement of Searcy Sports Complex. The second phase of Beebe-Capps Expressway is underway.

Faculty & Staff News

Ben Pickard was elected president of the five-state Southwest Association of Student Personnel Administrators for 1996-97. Pickard received a gubernatorial appointment to the Arkansas Student Loan Authority Board of Directors and will serve through 1999. He also chaired the legislative committee of the Arkansas Council on Student Services for 1995-96. He co-presented a program on "Default Rate Reduction" at the National Conference on Student Development, and presented a program on "Lawsuit Preparation" to the Arkansas

Association of Student Financial Aid Administrators.

Sherry Organ received the ASU-Beebe "Positive Teacher Award" for 1995-96.

Dr. Fred Floodstrand spent two weeks, May 12-24, at Texas A&M University as part of a National Science Foundation sponsored two-year faculty enhancement program for two-year college physics teachers.

Dr. Hazel Dickey is representing District V on the Executive Board of the Arkansas Business Education Association. She also attended the

National Business Education Association meeting in New Orleans in April.

Phil Petray successfully completed courses toward a doctoral degree in Higher Education Leadership with an emphasis on classroom teaching from the University of Arkansas at Fayetteville during the spring semester. Petray, who has been with the university for 26 years, will resume teaching in the ASU - Beebe social sciences department for the 1996 fall term.

(Continued on page 8)

Danny Dobbins, '74, is president of Dobbins Financial Services which he established in 1983. The company specializes in investment planning, including life insurance, disability insurance, mutual funds and annuities. His wife **Marcia (Cohorn)**, '73, helps in the business and substitute teaches in Searcy Public Schools.

Neal Davis, '75, has recently been awarded the Auto Auctioneer's World Championship honor. Davis is employed at Mid-Ark Auto Auction in North Little Rock and has Neal Davis Auction & Realty Company in Beebe.



Davis

He is married to the former **Annette Gross**, '69, who is a teacher in Beebe Public Schools.

Jason Knife, '94, recently married Melissa Dawn Henson. They make their home in Searcy. Jason is employed by UPS.

David Choate, '76, is serving his second term as State Representative. He is a democrat and served as one of four Assistant Speakers Pro Tempore for the House during the 80th General Assembly. He is a member of the House Education Committee, the House Agriculture and Economic Development Committee, the House Rules Committee and the Joint Budget Committee. His wife, **Carla (White)**, '76, is Parent Involvement Coordinator in the Beebe Public School system.

Major Robert Wiley Lashlee, Jr., '79, received his commission from Officer's Training School in 1982. He received his master's degree from the Air Force Institute of Technology in Electrical Engineering in 1987 and his doctoral degree at the University of Missouri-Rolla in July, 1994. He has served duty at Eglin AFB in Florida, at the Air Force Academy in Colorado

We Want To Hear From You . . .

We want to include as much information as possible about the alumni of ASU - Beebe in *Meeting The Challenge*. Please send us information you would like to have included in this publication.

Name _____ Last year at ASU - Beebe 19 _____
 Address _____ City _____ State _____
 Employer _____ Title _____
 Comments _____

Mail to: Alumni News, ASU - Beebe, P.O. Box H, Beebe, AR 72012-1008

Springs as a professor of Astronautics, and is now assigned to Wright Laboratory, Wright-Patterson AFB, Ohio, as Technical Director for the Reference Systems Branch. He and his wife Tamee have three children, Robert III, Tiffanee, and Matthew.

Vicki Sandage, '81, is the new Executive Director of the Stone County Skilled Nursing Facility at Mt. View. Formerly, she was Administrator of Juvenile Justice in Little Rock for six years and before that taught English in the Beebe Public School system.

Mike, '75, and **Carol (Berry) Robertson**, '76, are co-owners of Warehouse Furniture in Beebe. Mike is also mayor of Beebe. A recent accomplishment of the city is the newly opened Daniel Park on Main Street. Ongoing projects include the city park improvement (located just north of Hwy. 67/167) and the Lonoke and White County water project. Still in the planning stages, the \$43 million project will serve Beebe and seven surrounding communities with water from Greers Ferry Lake by late 1999. Mike and Carol have one son, Sean, who is in the second grade at Beebe.

Tom Anderson, '84, is in the Air National Guard at Ft. Smith, and **Marc Anderson**, '85, is a pharmacist in Conway. The brothers fly all over the world as pilots of the F-16 for the Air National Guard.

Kelly Adcock, '90, news editor for the Daily Citizen, has won numerous awards in state newspaper editorial/photography contests. Her most recent honor was third place in the Service to Freedom of Information Act from the Arkansas Associated Press Managing Editors at its convention at DeGray Lake.



Adcock

Mike and Karen Pallone, '88, opened the Pallone Veterinary Hospital at Rose Bud this past year. Mike graduated from Louisiana State School of Veterinary Medicine in 1995 and Karen, in May of this year. The husband and wife team have a mixed animal practice located on Hwy. 36 West in Rose Bud.

Tom Brannon, '88, is the KATV Channel 11 weather caster. His first on-air forecast was March 9 of this year as the weekend weather caster. Recently, he began doing the 5, 6, and 10 p.m. broadcasts on weekdays.

Steven D. Mitchell, '94, returns to Arkansas State University at Jonesboro in the fall for his senior year. While at ASU - Beebe, he was elected to the vice presidency of the Southern Region of National Future Farmers of America. He is working for FFA this summer.

Faculty & Staff News

(Continued from page 6)

Dr. Steve Manning completed the Arkansas Science Crusade program during the 1995 fall semester, earning \$5,000 in grant money for science equipment at ASU-Beebe.

Jack Raber was named to Who's Who Among America's Teachers.

Dr. Mark Taylor serves on the executive board of the Arkansas HIV Advisory Council for Higher Education and the executive board of the Single Parent/Homemaker Career Development Center. Dr. Taylor presented a program on "Innovative Staff Development" at the National Conference on Student Development. During the year, he presented workshops dealing with crisis management to The Arkansas Association of Student Financial Aid Administrators, the Arkansas College Personnel Association, and the Memphis-in-May Student Affairs Conference. Dr. Taylor also chaired the "Disability Services Roundtable" at the Memphis-in-May Conference.

Linda Allee served as conference treasurer for the annual meeting of the National Association of Developmental Educators which was held in Little Rock during spring 1996.

David Jamieson, ASU-Beebe/Newport biology instructor, recently traveled to Minnesota to work with federal researchers on a project involving the endangered gray wolf. Jamieson worked with researchers to collect data from wolves taken on the federal government's livestock depredation program. The data collected will be used in an effort to slow the decline of the gray wolf population.

Glenda Suttle joined the staff in the Division of Continuing Education on April 22.

Cathy Long serves on the ACPA Arkansas Collegiate Drug Education Committee.

Carol Nelson began work at the Little Rock Air Force Base, May 1.

Rae Thomas presented "A Student Activities Roundtable" at the annual Memphis-in-May Student Affairs Conference.

Bob Jenkins was elected chairman of the ASU-Beebe Faculty Association for 1996-97.

Rita Toland was elected president of the Arkansas Association of Student Financial Aid Administrators for 1996-97. She also serves as a member of the Board of Directors and the Training Committee of the Southwest Association of Student Financial Aid Administrators. Toland co-presented a program on "Default Rate Reduction" at the National Conference on Student Development and a conference session on "Refund and Repayment" at the Southwest Association of Student Financial Aid Administrators Conference.

Linda Allee, Wilene Leach, and Brenda Sullivan were among the presenters at the regional meeting of the National Council of Teachers of Mathematics in Springfield, Missouri, during the 1996 spring semester.

Carol Harvey, program coordinator at Little Rock Air Force Base, completed her requirements for her master's degree.

Cathy Long and **Dr. Hazel Dickey** led a roundtable discussion entitled "Strengthening the Advising Foundation" at the Arkansas Academic Advising Network (ARKAAN) meeting in Little Rock in June.

Dr. Fred Floodstrand presented "Humanizing Effects of Mathematics Education" at the annual conference of the American Mathematical Association of Two Year Colleges which was held in

Farris To Judge National Events

Barry Farris, assistant professor of agriculture at Arkansas State University - Beebe, has been selected as judge for the National Proficiency and National Farmer Awards. Farris will represent Arkansas at the national level of judging and will travel to Washington in August.

Farris will judge state Future Farmers of America winners who are competing at the national level. The state winners will be competing in various categories of agriculture. The winners will be announced at the National FFA Convention in Kansas City next November.

Little Rock during the 1995 fall term.

Robert Pest, adjunct instructor at ASU-Beebe/Newport, received the KAIT-TV (Jonesboro) 1996 Golden Ruler Award. Pest, who was nominated by one of his students, is one of twenty 1996 winners, chosen from more than 200 nominees.

Nancy Hammes returned from a successful stay in Florence, Italy after a leave of absence during the spring semester.

Dr. Dianne Tiner was promoted to associate professor of psychology. Dr. Tiner has been employed at ASU-Beebe since 1985, having begun her career with the university as a counselor. Also, ASU-Beebe/Newport faculty members, **Duane Doyle** and **Linda Duncan** were both promoted to assistant professor.

ASU-Beebe faculty members **Sandra Adams, Lugene Gilbert, Steve Manning, and Kay Turley** were all granted tenure.

Wisdom Presented NADE Award At National Meet

Gerre Wisdom, assistant professor at Arkansas State University - Beebe, was presented the 1996 Professional Development Award by the National Association for Developmental Education. The award was presented at the association's annual conference held in Little Rock.

Over 1,400 college instructors from throughout the United States and several foreign countries attended the national conference.

Wisdom was cited for her work in developing a classroom recreational library at ASU - Beebe. In addition to a plaque commemorating the award, Wisdom was presented \$500 to purchase more books for her classroom library. Wisdom joined the ASU - Beebe faculty in 1990 as developmental reading instructor.

In a report prepared for the selection committee, Wisdom noted, "...we discovered that many of our reading students have some misconceptions about reading, such as: reading is for learning, but not for enjoyment; books are a bore; reading is not a good way to spend spare time; and most books are too long and dull...To provide positive experiences, we believe, along with Morris and Zinn, that some class time should be devoted to sustained silent reading of young adult books which appear to promote a desire to read outside of class. Because some students lack library skills and have poor selection skills, we need to develop a small classroom library of



Gerre Wisdom

young adult books...We believe that this project will boost students' self confidence and students' realization that reading is actually an enjoyable activity as well as a learning experience."

ASTI Program Designed To Aid Business, Industry

The Economic Development Office of Arkansas State Technical Institute has been heavily involved in working with business and industry and the Arkansas Industrial Development Commission in the Existing Workforce Training Program.

The program makes state grant money available for industries to help defray the cost of employee training. The grants range from 20-70 percent of qualified training expenses.

ASTI's Economic Development Office conducted over 5,000 contact hours of training for 226 students at 39 companies in 1995. During the first four months of this year, the development office completed over 1,215 contact hours with an additional 2,177 hours contracted. Those figures represent 384 students and 17 companies.



MISS ASU - BEEBE--Stephanie Sue O'Dell, center, of Jacksonville was crowned 1996 Miss Arkansas State University - Beebe and represented the university well in the Miss Arkansas Pageant last June. Selected to reign with Miss ASU - Beebe were, from left, Laura Stephenson of Searcy, fourth runner-up; Vinolya Ann Koester of Jacksonville, second runner-up; Aimee McCracken of Heber Springs, first runner-up; and Pilar Butler of Lonoke, third runner-up.



Student Affairs Aid Students Many Ways

Almost every ASU - Beebe student, at one time or another, will come into contact with Student Affairs--whether it's through personal service offered by the department or through one or more of a wide variety of campus activities.

The **Learning Resources Center** comes into contact with hundreds of students every semester. The LRC assists students who may need extra help in their college studies. LRC offers individual tutoring along with computerized and audio/video tutorials in course areas from all academic divisions on campus and the Little Rock Air Force Base.

The **Counseling Center** also offers a variety of services to ASU - Beebe students. Counselors are on hand to offer academic advising, career counseling, withdrawal interviews, testing, housing, scholarships, and disability services as well as personal counseling. The Counseling Center also offers special on-campus programs which include career planning seminars, an organizational fair for student groups, support group outreach for older students who have returned to college, and an Opt-To-Stop smoking campaign.

The **Student Financial Aid** office dispersed a record \$2,390,000 to 1,175 students during the academic year. Financial aid officers give presentations to student groups in this area to provide information on financial aid programs and eligibility requirements.

A program new to the ASU - Beebe campus is the **Upward Bound** program. It began last October and it is designed to help and encourage students, who

The various departments of Student Affairs comes in contact with thousands of students each year. A breakdown of how many students served by the different departments is:

Department	Students served in '95-'96
Financial Aid	1,175
Counseling Center	3,742
Learning Resource Center	1,356
Tutorial hours - 15,500	
Upward Bound	50
Intramural Sports	420
Vehicles registered (campus police)	2,800

may not otherwise be inclined to do so, to attend college.

The program was granted federal funding of approximately \$1 million to operate through 1999. In its first year, 50 students were selected for the program. Almost all were both first-generation college students and from low income families. Each student has academic potential and the Upward Bound program focuses on motivating and preparing the student to complete high school and pursue postsecondary education. Students are provided academic instruction and tutoring, counseling, self-esteem activities, career awareness and academic advice.

Students living in campus **residence halls** now have access to computers. Students may use the PCs for their academic work.

Student Activities, sponsored or coordinated through Student Affairs during the year, include "Twister Mania," "Virtual Reality," "Star Struck Video Productions," and, in conjunction with the Student Leadership Council, sponsored fall and spring dances.

In addition, professional entertainers were brought to ASU - Beebe for both students and the general public through the **Lecture\Concert Committee**. Six presentations were made available during the academic year. **Intramural Sports** are also available to ASU - Beebe students with such activities as flag football, tennis, pool, racquetball, golf, archery, basketball, bowling, softball, volleyball and other events. Championships are held in each event and the winners awarded prizes.

Library Expanding, Converts To New System

The **Abington Memorial Library** has progressed well in converting to the Library of Congress system, a system that is more appropriate for growing libraries. Approximately 34,000 books out of the 56,000

volumes have been reclassified. The transition apparently will take two or three years less than had been anticipated. Coding of current periodicals using this system has resulted in a substantial drop in book loss.

ASU - B/N Activities Play Key Role In Successful Year

ASU - Beebe/Newport has completed another successful year and contributing to that success was student involvement in the following events held during the academic year.

Three hundred-plus students from 15 high schools attended a **College Preview Day** on the Newport campus this past spring. The preview day went beyond the typical "career day" by offering the students a variety of fun activities. Students attended the usual tours and also enjoyed interactive demonstrations. The Chemagic and the theatre group also performed for the students.

The season's opening production by the touring group of the **Arkansas Repertory Theatre** was performed on the ASU - Beebe/Newport campus last fall. The performance of **M.Bard** was the first of 30 performed across the state. Over 150 people from the campus, community, and area high schools attended.

ASU - Beebe/Newport hosted a series of three diverse lectures during this school year in an informal **Brown Bag Lunch** atmosphere. The first lecturer, Keith Sutton from the Arkansas Game and Fish Commission, gave a slide presentation concerning Arkansas' endangered species with an emphasis on the status of the mountain lion in Arkansas. The second in the series featured a local author, Laura Ford, who met with classes to discuss writing historical fiction and book publishing. She also conducted a book-signing for her new book, *For the Love of Jennie: A Tiny Love Story*. The last lecture was presented by Neal Vickers from the ASU Placement Office. Vickers presented a session on conducting job



CITIZENSHIP AWARD WINNERS--*Karlynn Holloway of Austin and Corey Finley of Beebe were presented Arkansas State University - Beebe's highest awards, the Citizenship Award, at the annual awards banquet. The Citizenship Award is not only for academic achievement, but also for contributions to the university, participation in co-curricular activities, and potential for future success.*

searches and being prepared for the job market.

"**Ridge to River,**" the literary/news magazine published twice a year by ASU - Beebe/Newport, was distributed to more than 4,000 individuals this year. The magazine provides students, faculty, and surrounding communities a literary voice, as well as a medium for expressing their talents. The editorial board of the magazine is comprised of students, faculty, staff and community editors who review original, previously unpublished essays, poetry, short fiction, black and white art work, news articles and other

items of community and school interest for each issue.

A group of general Chemistry students volunteered this year for chemical demonstration shows. The group, called **Chemagic**, prepared programs for several on-campus activities and traveled to area public schools to perform.

The Biology Club of ASU - Beebe/Newport has been actively involved in local environmentally-conscious endeavors this year including tree planting and the adoption of a stretch of highway near the campus with the intention of keeping it litter-free.

Development Council Focuses On Future

Arkansas State University - Beebe has launched a new program designed to enhance the mission of the university and to provide a higher level of service to its students. A Development Council and an Office of Development have been established at ASU - Beebe along with a 15-person Board of Directors for the Council.

The program will focus on ASU - Beebe's future development in order to provide even higher quality in its programs and academics. "We want to have world-class technology for all our programs, to provide more scholarships for deserving students, and to develop campus facilities to meet the inevitable future growth of the university," said Nancy Jackson, director of the Office of Development.

Named to the Board of Directors by ASU President Dr. Les Wyatt were Wayne Hartsfield of Searcy, who was appointed chairman of the group, Derwood "Andy" Anderson of El Paso, Wilma Beard, Walter England, Dennis Gillam, Betty Hayes, Garland Kirkpatrick, David Owen, Sheryl Priest, Carol Robertson, and Roy Simmons, all of Beebe, Jim Lovell of Cabot, Garth Martin of Little Rock, Brooks Morris of Harrison, and Paul Osborn of Searcy. The Directors will assist in securing, overseeing and disbursing gifts, capital campaigns, planned giving and other ongoing fund-raising programs created through the Office of Development. The Board will also serve in an advisory capacity on university plans and goals. "We would like to express our sincerest appreciation to these friends of the university for their willingness to help ASU - Beebe meet and surpass the demands of educating in an ever-changing world," noted Chancellor Eugene McKay.

"By maintaining an indepen-



Several members of the ASU -Beebe Development Council tour ASTI's computer lab. Looking over the facility are, from left, Roy Simmons, Betty Hayes, Garland Kirkpatrick, Brooks Morris, Garth Martin, Wayne Hartsfield, Paul Osborn, and Derwood "Andy" Anderson.

dent Board of Directors organized with operating committees, the Development Council can more effectively involve interested volunteers in the fund-raising effort and create within them a sense of pride and accomplishment--these being critical to fund-raising success," Chancellor McKay added.

A crucial part of the new development program is the creation of an Alumni Association. Such an association will keep former students informed of university programs, activities and progress. It will also encourage alumni to represent the university in their communities and support the university in its future growth.

Program Established For Gift Giving

ASU - Beebe recently began a new program for persons who wish to donate gifts to the university. Under the program, a person may make a bequest, a charitable remainder trust or gift annuity. Donors may also make the university the beneficiary of a life insurance policy or any other type of planned gift.

The program, administered by the new Office of Development at ASU - Beebe, has established "*The Traditions Society*" and "*The Legacy Society*." Persons making planned gifts of \$10,000 or more, committed in writing prior to December 31, 1996, will be honored as charter members of The Traditions Society. The Legacy Society was established for donors in the \$25,000 bequest range.

Dr. Ruth Couch, professor of English and vice chancellor for academic affairs at ASU - Beebe recently became the first charter member of The Traditions Society.

Persons interested in the program may contact Nancy Jackson, ASU - Beebe Office of Development, 882-8255.

Scholarships Part Of New Program

ASU - Beebe is extending efforts to attract more scholarship donors to assist qualified students in obtaining higher education.

Recently, ASU - Beebe launched a new program aimed at building and maintaining outstanding academic programs. The ASU - Beebe Development Council was formed to establish an Alumni Association and to actively seek financial support from individuals, corporations, and organizations who are interested in helping ASU - Beebe provide even higher quality in its academics and programs.

"This scholarship program will enable many of our brightest students, who may not have other means, to attend college. Investment in student scholarships is an investment in the future of our state and our nation," said Nancy Jackson, director of ASU - Beebe's Office of Development.

ASU - Beebe will offer donors two basic types of academic scholarships, endowed scholarships and annually funded scholarships. An endowment fund may be established in a donor's name or as a memorial to a loved one. It requires a minimum contribution of \$25,000 and this contribution may be made in a one-time payment or over a longer period, such as four to five years. That contribution is invested and a portion is used each year to award a scholarship, usually in the amount of tuition.

The second type of scholarship is one that is funded annually. These are usually given in the amount of in-state tuition (\$540) but lesser amounts will also be appreciated.

A donor may also establish the criteria to be used for awarding a

scholarship. While it is best to keep criteria as broad as possible for sufficient flexibility, donors may have preferences such as students in a particular field of study, students with high academic achievement, or students from specific high schools, cities, regions, etc. It is expected that scholarship recipients must be full-time students and awards are for fall and spring terms. Donor preferences will be honored, provided they do not conflict with university policies or state and federal laws and regula-

tions.

"In the past, persons or companies that wished to make a scholarship donation would make contact and be welcomed by the university," Jackson noted. "Under this new program, scholarships will be actively sought."

For information and literature on the ASU - Beebe scholarship program, contact Nancy Jackson, director of the Office of Development, 882-8255 (P.O. Drawer H, Beebe, AR. 72012).

'England Challenge' Established

Walter England, emeritus associate professor of education and former CEO of ASU - Beebe, has established the England Challenge Scholarship. He plans for the scholarship to benefit ASU - Beebe students who wish to go into teaching.

With the establishment of the challenge scholarship--he will match gifts made to the fund up to \$5,000--Mr. England will be adding yet another avenue to his and his family's long teaching careers.

Mr. England, his brothers and sister, and their spouses, and all the children and their spouses have cumulatively 534 years of teaching to their credit. Mr. England began teaching in grades one through four in a two-room school and taught the next two years, all of the eighth grades, in a one-room school. At Green County High School, he taught business education, coached boys' basketball and baseball, and drove a school bus (all for \$130 a month). At Lake City, he coached men's basketball and was principal of the high school. Back at Green County, he coached girls' basketball and was principal of the junior high. From 1950-55 he was superintendent of schools at Cash, Arkansas. Then he returned to his home, Alton, Missouri, and was superintendent of schools for nine years. He came to ASU - Beebe as dean in 1964 and remained through 1977, when he retired. After retirement, he taught education and psychology at the university for six years.

Mr. England is unique in academe in that he never spent a full academic year studying in a college or university. His undergraduate, graduate, and doctoral hours were earned during night classes, Saturday classes, summer terms, and one regular semester.

Mr. England now lives just north of Beebe and operates his own Pinzgauer cattle farm. He also is a volunteer at White County Medical Center in Searcy. He and his wife Louise have been an asset to ASU - Beebe and to the community.

Glenn Miller Band Highlights Lecture/Concert Series

Each year, Arkansas State University - Beebe brings outstanding professional entertainers to campus in its lecture/concert series. The performances are open to the public as well as the student body, and a special welcome goes out to ASU - Beebe alumni and friends. Season tickets are available for all performances at a very nominal price.

This year's lecture/concert series begins August 20 when The Glenn Miller Band comes to the ASU - Beebe campus. The schedule for the 1996-97 series is:

The Glenn Miller Band (August 20)--The legendary Glenn Miller was one of the most successful of all the dance bandleaders back in the Swing Era of the 1930s and 40s. A matchless string of hit records coupled with radio broadcasts, theaters, hotel performances and dance pavilions built and sustained the popularity of this famed band.

Glenn Miller died tragically in a plane crash in 1944, but his legacy has lived on in the only Miller Estate authorized band. The 19-member band plays original Miller arrangements along with more modern selections. Larry O'Brien is the current director dedicated to keeping the sound of the Glenn Miller Band alive.

Fredrick Winters, Hypnotist (November 11)--Fredrick Winters is a master at tapping into the subconscious mind and he demonstrates this in such antics as making a macho guy turn into a

dainty ballerina or turning people into kitchen appliances.

Winters is a professional who has adapted his skill for the stage. He has performed for thousands, from cruise ships to universities.

Mark Twain On Stage (November 21)--John Chappell has been delighting audiences in the guise of Mark Twain for some time, in stage shows from the Atlantic to the Pacific. He reminds us that Mark Twain was a master fashioner of the kind of epigrams known today as "one liners" used by many comics. Twain is well remembered for such lines as, "I'm opposed to millionaires, but it would be dangerous to offer me the position."

Chappell has also appeared in such movies and TV shows as *The Other Side of Midnight*, *Brubaker*, *WKRP in Cincinnati*, *The Rockford Files* and others.

National Opra Company, La Boheme (January 28)--One of the most popular operas ever written, Giacomo Puccini's *La Boheme* (*The Bohemian Girl*) is filled with soring melodies and ensembles which tell the story of two constrasting romances that are sometimes happy and carefree, sometimes fiery and tempestuous, and sometimes quite tender and tragic.

The opera also paints a realistic picture of artists and students living in Paris. Fully staged and costumed, the National Opera Company production features ten young singers chosen by nationwide

ASU - Beebe Students Invited To Pre-Game Hospitality

Former students of ASU - Beebe who attend the Arkansas State University-University of Central Arkansas football game in Jonesboro October 5 should look for the ASU - Beebe hospitality tent.

Although the game will be the 22nd meeting between the two teams, it will be the first time in decades the two universities have met on the gridiron.

As a feature of the game, both universities along with ASU - Beebe will host a hospitality tent before the game. Refreshments will be served and former ASU - Beebe students will have the opportunity to visit with old friends--*our thanks for the years spent at ASU - Beebe.*

audition, performing with piano accompaniment.

Red Hot and Cole (February 26)--In a scintillating mixture of mood, music, and biography, *Red Hot and Cole* celebrates one of the great masters of melody and the lyric line.

Cast in the form of a party spanning four decades of Cole Porter's life, this two-act review traces his life through his personal life to the stages of the world. Over 30 Cole Porter hits will be a feature of the night of entertainment.

Special Thanks

Our Special Thanks To . . .

ASU - Beebe is honored to recognize those alumni, staff and friends who have made an investment in the university's academic programs. Our thanks to these special people who became the first contributors shortly after the Office of Development was established:

Chancellor's Circle (\$500 - \$9,999)

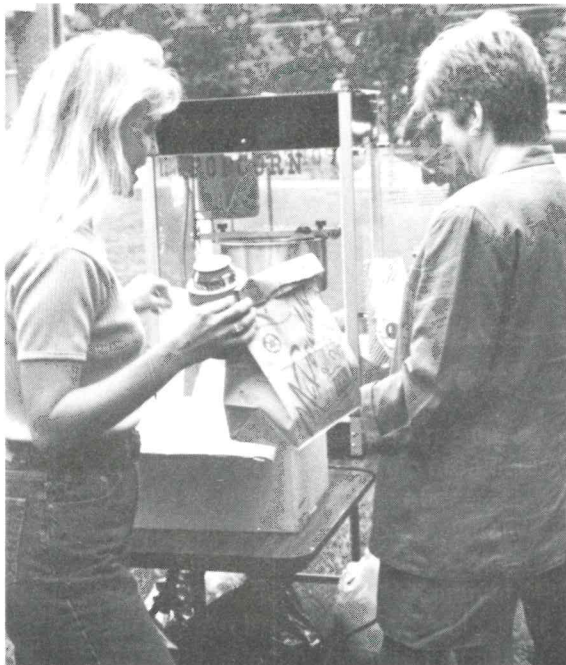
*Andy Anderson
Wilma Beard
Jerry & Suzanne Carlisle
Dr. Ruth Couch
Walter England
First National Bank
Wayne Hartsfield, president
Dennis Gillam
Larry & Judy Haile*

*Betty Hayes
Jerry & Nancy Jackson
Garth Martin
Drs. Eugene & Judith McKay
Brooks & Sara Beth Morris
Dr. Lloyd Norris
Ben Pickard
Roy Simmons
Southeast Building Concepts, Inc.
Melissa Woods*

Anniversary Club (\$100 - \$249)

David & Sherry Owen

The ASU - Beebe Office of Development has several gift categories to fit every level of giving: Chancellor's Circle (\$500 - \$9,999); Diamond Club (\$250 - \$499); Anniversary Club (\$100 - \$249); Friends of the University (\$35 - \$99 or couple \$50). Information on the ASU - Beebe gift clubs may be obtained by contacting Nancy Jackson, Office of Development, P.O. Box H, Beebe, AR 72012-1008 or call (501) 882-8255.



WELCOME BACK--The Beebe Chamber of Commerce extended a big welcome back to ASU - Beebe students when the fall term began and provided plenty of goodies for the occasion. Below, chamber representatives Sheryl Priest, foreground, and Judy Arnold help students with treats as they shift between classes. At left, sophomore Kim Smith adds to her treats as Judy Davis and Doc Abington man the popcorn machine. A total of 1,999 students registered for the fall term, a record for the university.





Office of Development
Arkansas State University - Beebe
P.O. Drawer H
Beebe, AR 72012-1008

NON PROFIT
ORGANIZATION
U.S. POSTAGE
PAID
PERMIT NO. 2
BEEBE, AR

ADDRESS CORRECTION REQUESTED
