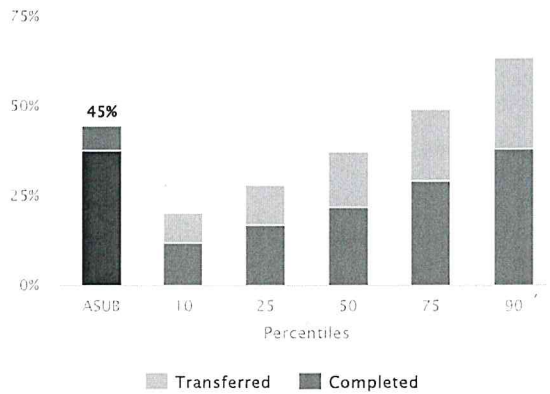


## ARKANSAS STATE UNIVERSITY-BEEBE

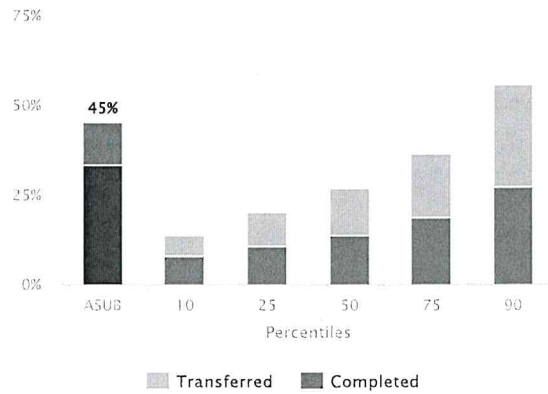
### Key National Benchmarks – Where Does Your Institution Stand?

Thank you for participating in the National Community College Benchmark Project in 2017. The report illustrates how your college compared to national data, representing 242 community colleges. The full NCCBP report, available online, contains more than 150 benchmarks, including new student success measures.

Full-time Students Completed or Transferred in Three Years



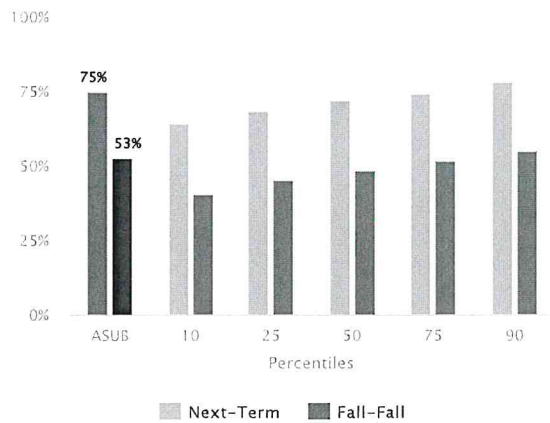
Part-time Students Completed or Transferred in Six Years



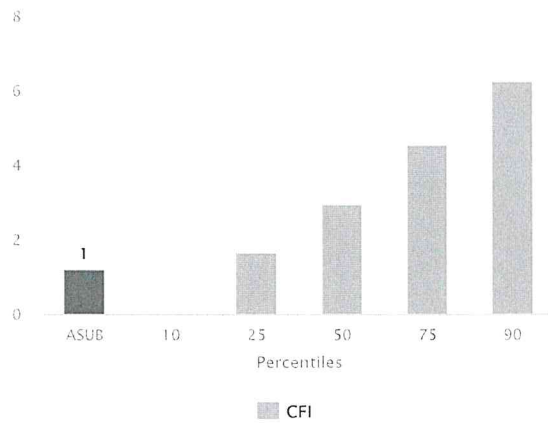
The percent of students out of the unduplicated full-time, first-time, credit headcount from Fall 2011 IPEDS GRS cohort who either completed a degree or certificate before fall 2016 or who transferred to four-year institutions before fall 2016.

The percent of part-time students out of the unduplicated part-time, first-time, credit headcount from Fall 2011 IPEDS GRS cohort who either completed a degree or certificate before fall 2016 or who transferred to four-year institutions before fall 2016.

Persistence Rate



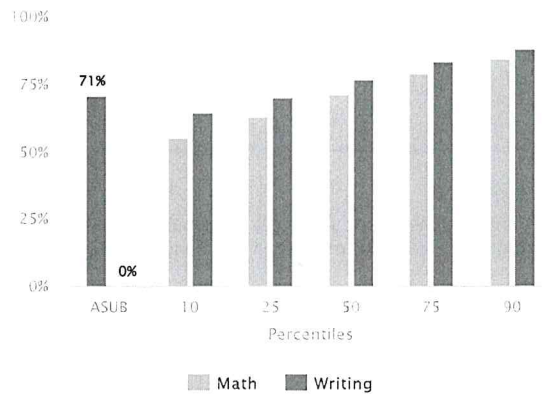
Composite Financial Indicator



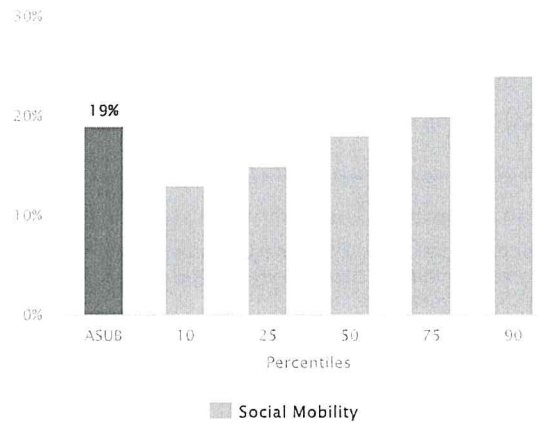
The persistence rate is the percent of Fall 2015 credit students, both full- and part-time, who return to the campus for the next term (usually Spring 2016), or for the next fall term (Fall 2016). This metric excludes students who graduated or completed certificates in the time frame.

The Composite Financial Index is a weighed score of the primary reserve ratio, net income ratio, return on net assets ratio and the viability ratio. Source: Strategic Financial Analysis for Higher Education: Identifying, Measuring & Reporting Financial Risks (Seventh Edition), by KPMG LLP, Prager, Sealy & Co., LLC; Attain LLC.

## Developmental Completer Success Rate



## Social Mobility



**Strengths** Students, institutionwide, with received grades of A, B, C, or D on the developmental assessment of math, as well as those in Fall 2015. The following benchmarks are where your community college performed at its best. The benchmark is followed by the percent rank for your institution.

1. % of Students that Received a Passing Grade of those that Completed English Comp I  
Your Rank - 94<sup>th</sup> Percentile
2. % of Part-Time, First-Time Students that Completed in Six Years  
Your Rank - 93<sup>rd</sup> Percentile
3. % of Full-Time, First-Time Students that Completed in Six Years  
Your Rank - 92<sup>nd</sup> Percentile
4. % of Full-Time, First-Time Students that Completed in Three Years  
Your Rank - 89<sup>th</sup> Percentile

**Opportunities for Improvement** The following benchmarks are where your community college may need improvement. The benchmark is followed by the percent rank for your institution.

1. % of Part-Time, First-Time Students that Transferred in Three Years  
Your Rank - 4<sup>th</sup> Percentile
2. % of Full-Time, First-Time Students that Transferred in Three Years  
Your Rank - 5<sup>th</sup> Percentile
3. % of Full-Time, First-Time Students that Transferred in Two Years  
Your Rank - 6<sup>th</sup> Percentile
4. CCSSE Academic Challenge Benchmark Mean  
Your Rank - 9<sup>th</sup> Percentile

## More Information

Find more information on the NCCBP by visiting our website [NCCBP.org](http://NCCBP.org) or by calling or emailing the Benchmark Institute.

Johnson County Community College  
12345 College Blvd.  
Overland Park, KS 66210  
913-469-8500 Ext. 4019  
E-mail: [michelle.taylor@jccc.edu](mailto:michelle.taylor@jccc.edu)  
Twitter: @EdBenchmark

