

ASU-BEEBE VANGUARD NEWS

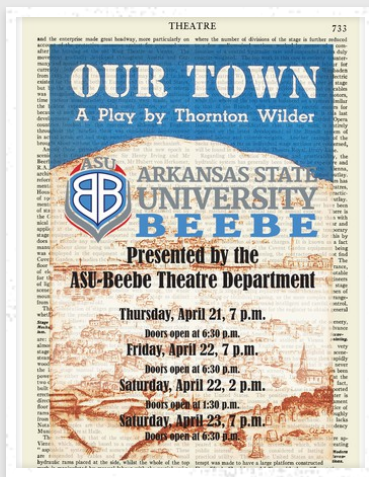
APRIL 20, 2022

The VANGUARD NEWS contains brief announcements and weekly happenings for all campus locations delivered via email.

VANGUARD NEWS is managed by the ASU-Beebe Marketing and Public Relations Office.

Submit your news for publication by noon on Fridays at email: pr@asub.edu.





THEATRE DEPARTMENT TO PRESENT "OUR TOWN" APRIL 21-23

ASU-Beebe Theatre Department will present Thornton Wilder's most renowned and frequently performed play, *Our Town*, April 21-23 at the Owen Center Theatre on the ASU-Beebe campus. Performances will be at 7 p.m., on Thursday, April 21; 7 p.m., on Friday, April 22; 2 p.m., on Saturday, April 23; and 7 p.m., on Saturday, April 23.

First produced and published in 1938, this Pulitzer Prize-winning drama of life in the small village of Grover's Corners has become an American classic. *Our Town* opens with the Stage Manager's introduction to Grover's Corners, a fictional town based in New Hampshire.

Ryan Gibbons, Assistant Professor of Communications and Theatre, stated, "A recent article in The Guardian identified *Our Town* as 'America's answer to Shakespeare.' Possibly the most performed play in U.S. history, *Our Town* has endured because of its ability to transcend the subject of small-town America at the turn of the 20th century, and instead grapple with the larger complexities of life in any century. *Our Town* is about nothing and everything all at the same time. Come and enjoy a slice of life that may remind you of what's important in your life today." Admission is free and open to the public. Doors will open 30 minutes before each showtime at the ASU-Beebe Owen Center Theater, located on the Beebe campus at 1102 W. College Street. For more information about ASU-Beebe programs, call (501) 882-3600, or visit www.asub.edu.



SGA PRESIDENT-ELECT AND TREASURER ANNOUNCED

Student Government Association (SGA) Spring 2022 General Election announced the following officers were elected:

Zayd Kelley was elected to serve as SGA President. Zayd is a first-year Associate of Science in Liberal Arts and Science student from Cabot. Zayd is a leadership scholar and the 2021-2022 student body vice-president. Zayd hopes to facilitate a full recovery with participation in student government and campus life, post-pandemic.

Emmie Driskill was elected to serve as SGA Treasurer. Emmie is a first-year Associate of Science in Business student from Beebe. Emmie is a leadership scholar and the 2021-2022 residence hall senator. Emmie hopes to advise Student Life and the Student Senate with preparing the best budget to support great student activities.



PHI THETA KAPPA HONOR SOCIETY INDUCTION

Congratulations to the members of ASU-Beebe's newly formed Beta Omega Alpha Chapter of the Phi Theta Kappa Honor Society! The chapter received its charter last night, which was presented by Lynn Tincher-Ladner, President and CEO of Phi Theta Kappa. Tincher-Ladner shared a story about her special connection to ASU-Beebe and how the college helped her and her family after Hurricane Katrina. Chapter members and the slate of officers were formally inducted during the ceremony.



**TARA
FORSTE**

1st Place Winner



**SHARON
HAWKINS**

2nd Place Winner



**CHRISTY
PARSONS**

3rd Place Winner

POETRY WINNERS ANNOUNCED IN ASUB PUBLISHING STUDIO AND CREATIVE WRITING CLASS

The ASUB Publishing Studio and the Creative Writing class sponsored a poetry contest in honor of National Poetry month, which is celebrated in April.

Students and alumni submitted various forms of poetry that were then evaluated by members of the ASUB Publishing Studio and students in the Creative Writing class. The poems were evaluated on Message, Form, Technique, and Originality.

The first-place winning poem was titled "Inevitability" by Tara Forste. The second-place winner was Sharon Hawkins with her poem, "Old Home Place," and the third-place winner was Christy Parsons with her poem titled "Smile."

The winners and their poems will be featured in the fourth volume of Uncharted, Literary and Art Magazine, which is managed by students and faculty in the ASUB Publishing Studio. They will also collect a monetary prize for their achievements.

To view past editions of Uncharted, open the link at:

<https://www.asub.edu/litartmag/index.aspx>

ASU-BEEBE

Earth Day EV Demo & Test Drive

Presented by
PHI THETA KAPPA HONOR SOCIETY



April 21, 2022 • EV CHARGING
OVERVIEW AND
DEMONSTRATION
11:30 a.m. - 1:30 p.m. • TEST DRIVE
McKay Student Center • ELECTRIC VEHICLES
AND MORE...

LIMITED TEST DRIVES AVAILABLE

SPONSORED BY

 **Today's Power**
Your Energy Partner

 **First Electric
Cooperative**
Improving Quality of Life

EARTH DAY ELECTRONIC VEHICLES DEMO AND TEST

Earth Day Electronic Vehicles Demo and Test will be held on Thursday, April 21. The event will be held as follows:

11:30 a.m. - 12 p.m.

EV Presentation by First Electric Cooperative
McKay Student Center, John Deere Room (2nd floor)

12 p.m. - 1:30 p.m.

EV Limited Test Drives
McKay Student Center Parking Lot (parking lot around the tennis court)

Earth Week

APRIL 18-22

MONDAY

ESSAY CONTEST OPENS

"INVEST IN OUR PLANET: ACT LOCALLY, THINK GLOBALLY"

TUESDAY

H2O: THE MOLECULE THAT MADE US

MOVIE IN THE SB LECTURE HALL 12:30-1:30

WEDNESDAY

QR CHALLENGE

WATER REFILL STATION SCAVENGER HUNT

FRIDAY

CAMPUS CLEAN UP

MEET IN THE GROVE AT NOON



GLOBAL AWARENESS COMMITTEE CELEBRATES EARTH WEEK

The Global Awareness Committee announced several activities this week in celebration of Earth Week. The theme for the week is "Invest in Our Planet: Act Locally, Think Globally."

On Wednesday, April 20, there will be a QR Challenge Water Refill Station Scavenger Hunt. Watch emails for details on playing the QR Challenge.

On Friday, April 22, there will be a campus clean-up. All participants should meet in The Grove at noon.



Essay Contest

Open to all ASU-Beebe Students



ESSAYS SHOULD FOCUS ON THE THEME: "INVEST IN OUR PLANET: ACT LOCALLY, THINK GLOBALLY."



ENTRIES SHOULD BE 500-750 WORDS, TITLED "GLOBAL AWARENESS COMMITTEE ESSAY CONTEST, AND EMAILED TO [JRMARQUESS@ASUB.EDU](mailto:jrmarquess@asub.edu).



THE DEADLINE IS MAY 1ST. THE WINNER WILL BE PUBLISHED IN THE NEXT UNCHARTED EDITION, AND WILL RECEIVE A SMALL PRIZE.

**"Invest in our Planet:
Act Locally, Think Globally"**

GLOBAL AWARENESS COMMITTEE ESSAY CONTEST

The Global Awareness Committee has announced an Essay Contest that is open to all ASU-Beebe students.

Essays should focus on the theme: "Invest in our Planet: Act Locally, Think Globally."

Entries should be 500-750 words, titled "Global Awareness Committee Essay Contest" and emailed to jrmarquess@asub.edu.

The deadline for entries is May 1, 2022.

The winner will be published in the next Uncharted magazine edition and will receive a small prize.

Heber Springs Parks Cleanup

Organized by ASU-Beebe Phi Theta Kappa Honor Society



April 23rd at 8:00 AM

Volunteer lunch at Sandy Beach

Sign-up at www.heberclean.org



Check-in Locations & Times

Spring Park: April 23 at 8:00 AM walk-through cleanup
Sports Complex: April 23 at 9:30 AM walk-through cleanup
Sandy Beach: April 23 at 11:00 AM volunteer cookout



PTK SPONSORS HEBER SPRINGS TOWN CLEAN-UP

In recognition of Earth Week and Keep Arkansas Beautiful Week, Phi Theta Kappa is sponsoring a Heber Springs Town Clean-Up on Saturday April 23, 2022.

The times and locations are:

* 8:00 a.m.

Spring Park, Heber Springs

* 9:30 a.m.

Sports Complex, Heber Springs

A sign-up form is available by contacting Eddie Supratman at esupratman@asub.edu or Kellie Dieutto at ktdieutto@asub.edu.

VANGUARD
Distovero
CAMP
SUMMER 2022

A fun and creative hands-on SUMMER CAMP focusing on **STEAM EDUCATION!**

SEARCY CAMPUS
June 6 - 9

HEBER SPRINGS CAMPUS
June 13 - 16

BEEBE CAMPUS
June 20 - 23

SAVE THE DATE — Schedule of events coming SOON!

ARKANSAS STATE UNIVERSITY
BEEBE
HEBER SPRINGS • LEXA • ONLINE • SEARCY

MARK YOUR CALENDARS!

ACADEMIC CALENDAR - SPRING 2022

View the Academic Calendar at:

<https://www.asub.edu/academics/academic-calenders.aspx>

May 4

Study Day (no classes)

May 5-10

Spring Final Examinations (includes online proctored exams)

May 7

Spring Degree Graduation Ceremony

May 12

Grades Due

TRIO LEADERSHIP COUNCIL BACKPACK DRIVE



**TLC NEEDS YOUR HELP COLLECTING STURDY
BACKPACKS FOR DISPLACED CHILDREN SERVED BY
THE OPEN ARMS SHELTER.**

DROPBOX LOCATIONS

**TRIO Classroom SH132 Owen Center Legacy Hall
Horizon Hall Student Life Office
April 4th - April 29th**



Questions?
Contact Jennifer Trujillo at
501.882.4451 or jltrujillo@asub.edu

TRIO LEADERSHIP COUNCIL BACKPACK DONATIONS

TRIO Leadership Council (TLC) on the Beebe campus needs your help collecting school-appropriate backpacks for displaced children served by the Open Arms Shelter.

TLC will have drop off locations in the following buildings: State Hall Room 132, Owen Center, Legacy Hall, Horizon Hall, and the Student Life Office in the Student Center.

For more information, contact Jennifer Trujillo at 501-882-4451 or email: jltrujillo@asub.edu.



VANGUARD WALKING CLUB

The Vanguard Walking Club encourages health and fitness. This club is open to students, faculty, staff and their family members.

The ASU-Beebe Walking Path on campus may be utilized for the Vanguard Walking Club. Walking is a moderate-intensity exercise that can be easily incorporated into your daily life. Simply walking more often can help you lose weight and belly fat, as well as provide other excellent health benefits, such as improving mood and brain function. In fact, walking just one mile burns about 100 calories.

Use the ASU-Beebe Walking Path and/or an app (information below) to track your distance. Choose your best time of the day and walk at your own pace.

To join the Vanguard Walking Club, simply fill out the online registration form at:

<https://form.jotform.com/62786755229167> or contact Charles Burns at cburns@asub.edu.

We will contact you for more details. For more information, contact Charles Burns at cburns@asub.edu.

How to Track Miles Walked

- Since most people have a cell phone and the majority of phones have access to apps that can track your steps daily, go to either the App store for Androids, or Apple App Store for I-Phones and download an app for tracking steps.
- Simply type "pedometer" in the search bar and you are off!
- If you have an "old school" phone and it doesn't support apps, then please contact Coach Burns to borrow a pedometer if these are available.
- Some recommended apps are: Pacer and Samsung Health.
- You should submit your steps on either a daily basis or weekly.
- Remember, we are on the "Honor" system when it comes to reporting steps.
- Your steps should have been tracked starting Monday 04/04/22

UPCOMING STUDENT ACTIVITIES

Check out the upcoming student activities for the Spring 2022 semester: [Student Activities](#)

April 21-April 23

Theatre Department "Our Town"

April 26

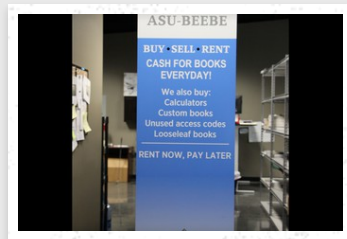
Student Life Impact Awards Banquet

April 28

Vanguard Awards Banquet

April 28

Symphonic Band Concert



ASU-BEEBE BOOKSTORE

In addition to books and supplies, the ASU-Beebe Bookstore carries Vanguard items and attire, as well as A-State Redwolf gear.

The Vanguard Community can find the Bookstore online at <http://Beebebooks.com> or contact them with questions at 501-882-0055.

Hours:

Mon.-Thurs.: 8 a.m.-5 p.m.

Fri.: 8 a.m. to 3 p.m.

The ASU-Beebe Bookstore is located at 1113 W. DeWitt Henry Drive next to Beebe Athletic Club in Beebe.



SPRING 2022 INDOOR SPORTS

Intramural Sports for the Spring 2022 semester are underway on the Beebe campus.

Check out the [indoor activities](#) being held in the Owen Center at 2:30 p.m.

The following activities are currently being offered:

OC Room 196

Chess

UNO

Battleship

Clue

Family Feud

Scrabble

Hallways in OC (near Room 196)

Cornhole

Ping Pong

Racquetball is also offered (North Racquetball Court)

Intramurals start at 2:30 p.m.

Come on over and enjoy the fun!



ONLINE TUTORING AVAILABLE 24/7

All ASUB students now have free access to 24/7 online tutoring in addition to already existing tutoring services.

Online tutoring for over 250 subjects, drop-off essay review, student success skills coaching, resume and job search assistance, and practice tests are available.

To meet with a tutor, just click the 24/7 Online Tutoring link in the navigation menu on the left side of any Canvas course.



TRIO STUDENT SUPPORT SERVICES

Did you know Student Support Services offers extra assistance to help you have the most successful college experience?

Student Support Services offers:

- *One-on-one tutoring & online tutoring
- *Academic advising & coaching
- *Books, laptops & calculators
- *Cultural enrichment events
- *Social activities
- *Student Advisory Board organization
- *Test proctoring
- *Computer lab and study room
- *Career and transfer assistance

Student Support Services is one of five Federal TRIO Programs funded through the United States Department of Education.

For more information, contact Jennifer Trujillo on the Beebe campus at ltrujillo@asub.edu or Sharon Scudder on the Heber Springs campus at sascudder@asub.edu.



CAREER PATHWAYS INITIATIVE

Are you an ASU-Beebe student and a parent who is looking for financial assistance while attending classes?

The Career Pathways Initiative at ASU-Beebe provides qualifying students who have dependents (children) extra career training and financial benefits, such as gas and childcare vouchers, books and tuition assistance, etc.

View more at:

<https://www.asub.edu/student-success-center/career-pathways/>

Searcy Campus office: 305

Main Building

Beebe Campus office: 202A

McKay Student Center

Phone: 501.207.6244

Email: tlnelson@asub.edu



ADULT EDUCATION CENTERS

Enrollment for General Educational Development (GED) classes is open at the ASU-Beebe Adult Education centers, located on the Beebe, Searcy, and Heber Springs campuses, as well as the Augusta Public Library and the Westside High School in Greers Ferry.

Get started with the online form at: <https://www.asub.edu/adult-education/>

Once the form is completed, you will be contacted to schedule an appointment.

Check out the FREE coursework offered through Adult Education:

Earn a high school equivalency (GED)

Take English as Second Language (ESL) classes

Take refresher courses before starting college

Sign-up for workplace training classes


For more information, contact the Adult Education at Searcy 501-207-6290; at Beebe 501-882-4508; at Heber Springs 501-362-1270.



ARKANSAS STATE UNIVERSITY-BEEBE


 Facebook  @ASUBeebe

Founded in 1927, Arkansas State University-Beebe is an operationally separate, two-year institution of the Arkansas State University System. With campuses located at Beebe, Heber Springs, Searcy, Little Rock Air Force Base and online, the university offers associate degrees, certificates and non-credit training for business and industry.

 1000 West Iowa Street, Beebe,...

 pr@asub.edu

 501.882.3600

 asub.edu

