



MEETING THE CHALLENGE

VOLUME 13 • FALL 2007

BEEBE • HEBER SPRINGS • LRAFB • SEARCY

www.asub.edu

Message from the Chancellor

IMPLEMENTING THE MASTER PLANS



Dr. Eugene McKay

It is always good to see plans come to fruition. Any year that we can complete \$28 million worth of construction to provide additional educational opportunities for our future students is a good year. The \$11 million science building on the Beebe campus opened for fall classes and has enabled us to provide additional science classes for students. Most of our highly qualified science faculty have doctorates and now have world-class facilities and equipment.

The academic building at ASU-Heber Springs will be open for fall and the student services building will be open during the fall at a construction cost of over \$17 million. These two beautiful buildings at the base of Sugar Loaf Mountain, a landmark in Cleburne County, will be the beginning of the development of a beautiful campus at Heber Springs.

At the Searcy campus, we have developed a master plan, spent more than \$1 million in HVAC repairs and new roofs, and added a new face for the entrance to the campus. Beginning in January, we hope to renovate and expand the shop areas and add new equipment at a cost of nearly \$6 million. This work should enable us to attract more students into technical/vocational programs and provide higher quality programs.

We could not have done any of these things without the support of the people who voted to give us the higher education bonds money, the people of Cleburne County who continue to support our efforts, and our friends in the legislature who have consistently supported our efforts. Since education is the key to economic development of our state, these investments should have a significant impact on the economic development of this region of the state as well as on the lives of individuals and their families.

We have also added several new programs of study to meet the needs of future students. A new Veterinary Technician program began at Beebe this fall. Forty-three students have already enrolled. We hope to have a new building at the ASU-Beebe Farm by fall 2008 to house this program. Arkansas veterinarians and the Arkansas Veterinary Medical Association have been very supportive of our efforts to establish the only veterinary technician program in the state. The Beebe campus also began an associate degree in Creative Arts this fall. This program is for artistic people who want to develop their artistic talents as well as their administrative and marketing skills so they can operate their own businesses. The Criminal Justice associate degree, started last fall, has over 80 students. Last fall we also started a Pharmacy Technician program, primarily at the Searcy campus, and it has had a full class every semester.

At Heber Springs, the Certificate in Welding has been popular, so an associate degree has been added. The new associate degree in Hospitality Administration and the new certificate of proficiency in Petroleum Technology show great promise.

The ASU-Jonesboro Center on the Beebe campus, with eight baccalaureate and three masters programs, continues to grow. Over 300 students enrolled last year and 138 received degrees on Beebe's campus.

During the last academic year, ASU-Beebe taught credit courses to more than 6,700 different students and non-credit programs to more than 5,000 people.

MEETING THE CHALLENGE

is published annually by the Office of Institutional Advancement, Arkansas State University-Beebe, Palm and Iowa Streets, Beebe, AR 72012-1000.

Bulk non-profit rate postage paid at Little Rock, AR. This publication is distributed free of charge to ASU-Beebe alumni, supporters, and personnel. For additional copies, please contact (501) 882-8255.

Edited by Melissa E. Jenkins • Contributing Writer/Photographer Colbie Moody

ASU-Beebe Recognizes Alumni and Friends

By Colbie Moody



Recipients of ASU-Beebe's Alumni and Service Awards pictured. Front row (left to right): Linda Jenkins, Jeannie Lindsey, Dr. Dianne Tiner, Dr. Eugene McKay, Brenda Shurley, Cathy Eoff. Back row (left to right): Michael McCarty, Doyle Slaten, Marvin Jones, Garth Martin, Lance Wright, Tracy French, Jim Haynes, Tom Jenkins, Dr. Ruth Couch, Bob Lashlee.

Arkansas State University-Beebe presented its first alumni and service awards at the 80th Anniversary Alumni Awards and Banquet March 31. ASU-Beebe solicited nominations for a year from the community, institution, and former students and a committee of nine persons selected the recipients.

ALUMNI SERVICE AWARD

Tom Jenkins, of Beebe, received the Alumni Service Award for service to his community through his professional career and personal interests. After obtaining degrees from ASU-Beebe and UCA, Mr. Jenkins began a 26-year career with the Arkansas Department of Health. He has shown his dedication by serving as board member and volunteer to many organizations that serve Central Arkansas.

DISTINGUISHED ALUMNUS AWARD

Honors former students of ASU-Beebe who exhibit exemplary character, success in their chosen professions, and leadership and service to their communities, the University, and society. One recipient was chosen from each decade:

Garth Martin (1940s), of Little Rock, attended ASU-Beebe from 1948-1950 and graduated from Hendrix College. He has been a major donor to ASU-Beebe and Hendrix and he was chairman of ASU-Beebe's Vision 2000 Campaign to furnish the student center. He has also served on the ASU-Beebe Development Council since its inception in 1997.

Doyle Slaten (1950s), of Searcy, dedicated his life to providing opportunities for vocational and technical education. When Foothills Vocational-Technical School opened in Searcy in 1966, Slaten served as business manager and then president. He also served as president of the state's Vocational Technical Director's Association and helped lobby for opportunities in vocational education.

Linda Jenkins (1960s), of Beebe, was selected for a graduate program at Harvard University for aspiring teachers. Once back at home she dedicated more than 28 years to teaching high school science to the students of Beebe Public Schools and eight years here in the Math and Science Division at ASU-Beebe.

continued on pg. 7

ASU - Beebe

Edited by Melissa Jenkins from the History of ASU-Beebe
by Dr. Eugene McKay



College Kitchen, 1930s.



Newspaper Staff, 1949.



Women's Basketball, 1953.



Men's Basketball Team, 1949.

The College at Beebe began as the Junior Agricultural School of Central Arkansas in 1927.

Dr. W.H. "Bill" Abington, a Beebe doctor and influential member of the General Assembly, managed to pass legislation establishing an agricultural school in central Arkansas. The Abington brothers donated much of the land for the school.

Classes began in 1931, with 38 students enrolled. Mr. William R. Curry was hired as supervisor of the schools of Beebe and head of the agricultural school.

The first class graduated in the spring of 1933. Tuition was \$7 per semester and room and board was \$11 a month.

The college continued in the 1930's and 1940's with small enrollments, but Doc. Bill managed to keep the appropriations coming. Out of Franklin Roosevelt's New Deal came State Hall, still the administration building for the campus. The building was started in the mid-30's and finished in 1939.

Basketball was popular in the '40s and '50s. There were men's and women's teams, and it is believed to be the only college in Arkansas that awarded basketball scholarships at that time.

In the early '50s, the board began trying to secure the future of the college by seeking association with a senior college. Mr. B.E. Whitmore, president, and members of the board visited Dr. Carl Reng, president of Arkansas State College in Jonesboro, to discuss a possible merger. They had previously approached the University of Arkansas and State Teachers' College (now UCA), without success.

Junior Agricultural College of Central Arkansas became a branch campus of Arkansas State July 1, 1955.

Before the merger, the college and the Beebe Public School system had shared facilities. With the merger, the college had to separate its property from the high school and could operate only its facilities. Also, the women's basketball program, run by Boyd Johnson, was dissolved because there was not a similar program at Arkansas State College. Despite always being known as an

continued on pg. 5

Through the Years

Continued from pg. 4

agricultural school, the first agriculture classes were offered. In 1956 AgDay began and continues today.

In 1956, President Reng hired J. Ernest Howell to be dean of the college. He repaired, renovated, and modernized buildings and pulled together a faculty to establish both an agriculture and junior college curriculum, gaining accreditation so that credits were transferable. He remained until 1964 and saw the beginning of the expansion in facilities and enrollment that would continue into the 1970's.

Walter England became dean in 1964 and served in that capacity for 13 years. Enrollment continued to grow under England's leadership and new buildings were added in the '60s and 70's. Warren Harshaw, the first African-American student at the college, came in 1965 and graduated in 1967.

Also in 1965, the college began offering instruction at the Little Rock Air Force Base. The degree center still operates today with hopes of a new education center built in coming years. Enrollment doubled in 1966 to 445 students due to many young men choosing college over Vietnam. In 1967, Arkansas State Junior College became ASU-Beebe Branch.

Women's basketball began again in the late 1960s under the direction of Jeannie Lindsey. ASU-Beebe became the only two-year college in Arkansas with a women's team. Coach Lindsey and Coach Marvin Speight also helped to form a women's conference in Arkansas. Intramural sports were also organized to enhance student life and continued for many years.

The J. Ernest Howell cafeteria and girl's dorm were near completion when England came in 1964. In 1968, Quapaw Hall, a new men's dormitory, was completed. The Math and Science Building and the new Abington Memorial Library were finished in the early 70's. Forty acres of land were purchased north of the campus and a new fine arts-P.E. complex to be called University Center was started in the mid 70's and finished in stages by the early 80's. It was renamed the Owen Center in 1995.

At England's retirement as dean in 1977, William Echols, the dean of instruction, became chancellor. Echols, England, and Howell had worked to bridge the gaps that some people in the community may have felt since the merger in 1955.

More than fifty years of association with Arkansas State University had brought security and growth to the Beebe College. The enrollment increased dramatically and the number of new buildings surely exceeded the wildest hopes of the founding fathers.

In 1981, W.H. "Bill" Owen, Jr. became chancellor, and having been raised in Beebe, he again brought to the college a strong commitment from the community.

In 1982, the North Central evaluation issued a 10-year certification, the first in the school's history.

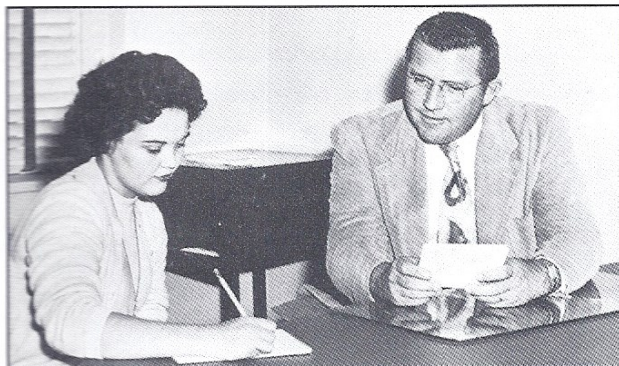
Legislative action in 1985 created Arkansas State Technical Institute to be located on the ASU-Beebe campus. In 1986, Dr. Donald Cain was selected as Dean of ASTI and that fall the first classes were offered in quality assurance technology.

The campus at Beebe continued to experience growth and change, including the addition of other campuses and curricula to expand ASU-Beebe's mission. In 1991, ASU-Beebe merged with White River Technical College to create ASU-Newport, now a stand-alone campus.

Other changes included discontinuing both men's and women's basketball programs because of fiscal constraints and establishing the ASU-Beebe Leadership Council as the student government organization. In 1994, the ASU-Beebe community was shocked with the untimely death of Chancellor Owen. A year later, Dr. Eugene McKay, a long-time faculty member and previous Vice Chancellor for Academic Affairs

continued on pg. 6

Through the Years, *continued from pg. 5*



Dean Ernest Howell, 1957.



Mr. Chudomelka's Speech Class, 1967.



Intramural Players, 1975.



Aerial view of campus, early 1980s.

became chancellor of the college. Under his leadership, rapid changes would begin. The college would make major improvements and expansions to the physical plant; add 26 academic programs; and develop two new campuses as part of the ASU-Beebe family.

In 1997, ASU Jonesboro opened its degree center to offer opportunities for education beyond the two-year degree. The building to house their operations was completed in 2000 and today they offer bachelor's and master's degrees. In 2002, the current student center was built, offering more opportunity for student life and community involvement. The renovation of State Hall was complete by 2003.

ASU-Heber Springs, a Center of ASU-Beebe, was established in 1999 in response to the community's desire to have a two-year college in Cleburne County. In 2002, the center moved from downtown Heber Springs to the John L. Latimer Skills Center. Instruction and administrative functions will be housed there until the opening of the new campus in late 2007 at the base of Sugarloaf Mountain.

In 2003, Foothills Technical Institute in Searcy merged with ASU-Beebe to become ASU-Searcy, A Technical Campus of ASU-Beebe. Courses in career training and technical instruction remain the focus of the campus. An additional 17 acres of property adjacent to the Searcy campus were recently acquired and a master plan for the Searcy campus is under development and reconstruction has begun. Today, renovations to the face of the building are underway.

By 2007, 80 years after its founding, ASU-Beebe can boast that it is the oldest two-year institution in Arkansas. While ASU-Beebe has been known by many names, it's still the familiar place that you once knew. Times have definitely changed at ASU-Beebe with several building additions, new programs of study and degrees, and students added from several other campus locations. But, the heart of ASU-Beebe remains the same and the tradition of quality learning in a close, caring atmosphere is what makes us unique.

Whatever name you called it, we know you remember it fondly. Eighty years later, ASU-Beebe is indeed still changing lives.

Service Awards,*continued from 3*

Marvin Jones (1970s), of Cabot, has provided ASU-Beebe generous giving and leadership. He just completed a term as chair of ASU-Beebe's Development Council. He has also established the Marvin Wayne Jones Family Trust and fostered a partnership with Stephens, Inc. to provide our own business students monies to make stock market investments as part of their educational experience.

Brad Archer (1980s), of Greensboro, N.C., was the recipient of the largest theatre scholarship ever given by ASU Jonesboro. He has distinguished himself in the theatre arts community with several national awards for his scenic design and lighting.

Lance Wright (1990s), of Quitman, earned his associate's degree at ASU-Beebe and then went on to earn a bachelors, masters and law degree from the University of Arkansas. Today, he remains very active in Heber Springs through his private law practice and numerous community projects.

Michael McCarty (2000s), of Bald Knob, is the most decorated Arkansas soldier of Operation Iraqi Freedom. He served in Iraq for 12 months as an Infantry Platoon Leader. McCarty now holds the Silver Star (the Army's third highest honor), the Bronze Star for Valor, the Purple Heart, as well as several other distinguished awards.

THE DISTINGUISHED FACULTY AWARD was presented to **Jeannie Lindsey**, of Beebe, for her exemplary commitment to students and education and for her service beyond faculty responsibility. In 1965, she worked to give ASU-Beebe women the chance to compete again in basketball. She and her students organized an AAU team as the Beebe Independents and reigned as State Champions for their first two years.

THE DISTINGUISHED STAFF AWARD was presented to **Bob Lashlee**, of Beebe, for achievements and contributions he made at ASU-Beebe. He was hired in 1975 to serve as security officer and also served as Director of Public Information, Director of the Division of Continuing Education, Director of Little Rock Air Force Base, and committee chairperson. Before leaving in 2001, Lashlee was instrumental in developing off-campus sites for college credit in seven surrounding counties, thereby improving access to education for the people of Central Arkansas.

THE MERITORIOUS SERVICE AWARD was presented to Drs. Dianne Tiner, Ruth Couch and Eugene McKay for distinguished achievements and contributions to ASU-Beebe as a non-student or graduate.

Dr. Dianne Tiner, of Heber Springs, has provided great leadership and dedication as she helped begin ASU-Heber Springs. A part of the ASU-Beebe family for more than 20 years, Dr. Tiner has served in seven positions at Beebe and Heber Springs. She is currently Vice Chancellor for ASU-Heber Springs, which will have a new campus at the base of Sugarloaf Mountain this year.

Dr. Ruth Couch, of Beebe, is ASU-Beebe's first female vice chancellor and longest-serving vice chancellor for academic affairs. In 2005, she established the Dr. Ruth Couch Endowment Scholarship to provide perpetual tuition monies to deserving students.

Dr. Eugene McKay, of Beebe, has dedicated more than 40 years to ASU-Beebe. Dr. McKay's lifetime achievement has been ASU-Beebe and his passion for developing it to be the finest two-year institution in Arkansas. For 21 years, Dr. McKay remained in the classroom, providing students the foundations of a strong education. He then served as Vice Chancellor for Academic Affairs. For the past 12 years, he has been chancellor, leading the college to unprecedented growth and expansion.

THE CORPORATE EXCELLENCE AWARD recognizes companies that have demonstrated exemplary commitment through giving, community relations, volunteer service, or other acts of support that help to improve the University's service to its students and community. The following were recipients of this award:

Brenda Shurley, of Cabot, has helped build the bridge for students, ensuring their success and enhancing their experience at ASU-Beebe through the Shurley Learning Center and the Shurley Greenhouse at the farm. She has also provided needed scholarship assistance to students with the Shurley Scholarship, which she endowed in 2005.

Golf Tournament Raises Scholarship Money



Arkansas State

University-Beebe held its first golf tournament to raise scholarship money to benefit the school's endowed scholarship fund. The tournament, held March 29, 2007 at Greystone Country Club in Cabot, raised more than \$10,000 for student scholarships. A total of 20 teams played in the four-man scramble.

Corporate sponsors for the tournament included Community Bank, Nabholz Construction, and White County Medical Center. "The tournament was a huge

success. Our players had a great, competitive course to play and we significantly increased the funds available for student scholarships at ASU-Beebe," said Keith Pinchback, Vice Chancellor for Institutional Advancement.

"Response to the tournament exceeded our expectations for a first-time event. The weather was perfect, and participants seemed excited about the possibility of a second annual event. Community Bank was proud to be a sponsor for this event and was able to provide many of the tournament volunteers. A



good time was had by all," said Jim Haynes, Community Bank Executive Vice President.

Service Awards, *continued from pg. 7*

Cathy Eoff, of Beebe, has been a valuable fixture of the Beebe community since 1975 through her community support. In 2006 she shared her family's love of education with ASU-Beebe through the endowment of the Eoff Family Scholarship. A dedicated financial supporter of ASU-Beebe and ASU Jonesboro, Eoff will help to make the difference for many students by providing them the boost they may need to complete their education.

Community Bank has been a generous supporter of ASU-Beebe in several ways. The ASU-Beebe Concert/Lecture series was enhanced in 2004 after

Community Bank provided the funding to help the program and provide our community with quality, affordable cultural programming. Community Bank has generously supported student scholarships with donations to the endowment fund at ASU-Beebe. They were the lead sponsor for the 80th Anniversary Golf Tournament and provided the volunteer labor to staff the entire event and raise the money needed to be a success. Volunteers from Community Bank support the Development Council with their time and energy.

Mayor Robertson Proclaims ASU-Beebe Week

Beebe Mayor Mike Robertson recently proclaimed March 26-31 as Arkansas State University-Beebe Week.

ASU-Beebe celebrated its 80-year anniversary as the oldest two-year institution in Arkansas with a week full of activities. The festivities included: a charity golf tournament; a concert performance by Rosilee Walker, premier pianist; a variety of alumni receptions; an alumni basketball game; an annual 5k Race; family picnic; and an alumni dinner and awards ceremony.

ASU-Beebe was founded in 1927 as the Junior Agricultural School of Central Arkansas when a group of local citizens in Beebe lobbied the state to establish an agricultural college to serve the students of Central Arkansas. In 1955, the college became part of the Arkansas State system.

Eighty years later, with an economic annual impact of \$316 million, ASU-Beebe offers college course work that will transfer to four-year institutions as well as technical and career training. ASU-Beebe also contributes to its communities by providing adult, continuing and workforce education to more than 5000 persons a year.

ASU-Beebe has enjoyed a close relationship with the Beebe Chamber of Commerce for several years,



Front row (left to right): Dr. Eugene McKay, Chancellor of ASU-Beebe, Mayor Mike Robertson, and Rosemary Frame, Institutional Advancement. Back row (left to right): Melissa Jenkins, Community Relations Coordinator, Dr. Theodore Kalthoff, Vice Chancellor of Academic Affairs, and Keith Pinchback, Vice Chancellor of Institutional Advancement.

working alongside Beebe citizens and business leaders to help the city and its people move forward.

Practical Nursing Program Recognized for Pass Rate

The Arkansas State University-Beebe Practical Nursing Program was recently recognized by the Arkansas State Board of Nursing for a 100 percent pass rate on the licensure exams for the past five years. ASU-Beebe's Practical Nursing Program is the only program in the state with this success rate.

The Practical Nursing Program is a three semester program. Students attend classes on campus and do clinical rotations in the field. ASU-Beebe nursing students spend 798 hours during the program taking care of patients. Students also participate in the White County Extension Body Walk, Senior Citizen Day at the White County Fair, and the Senior Olympics.

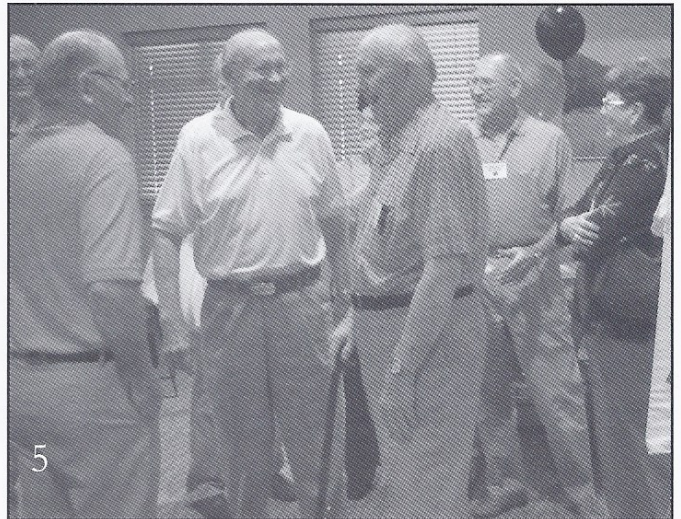
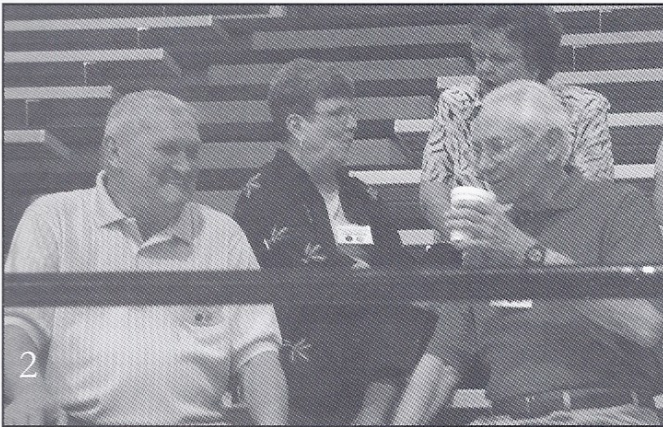
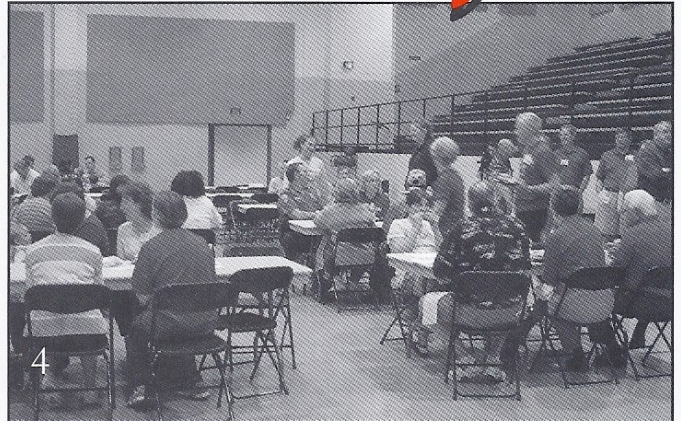
Gail Burton, department head of the nursing program, praised the students and other instructors for their success rate. "It is the willingness of the students to follow the instructors and become leaders in their profession that makes all this possible," Burton said.

Since its inception, 825 students have graduated from the program.

Students interested in enrolling in the Practical Nursing program will need to submit an application for admission, ACT scores, or other placement scores. The assessment scores must be no more than five years old and should be equivalent to ACT scores of 19 or higher in all areas. Bonus points are awarded for recent work experience in direct patient care and for completion of college level course work in selected lab science courses, college English and college algebra or higher-level mathematics courses.

For more information or to make an appointment for testing, contact ASU-Searcy Student Services at (501) 207-4014.

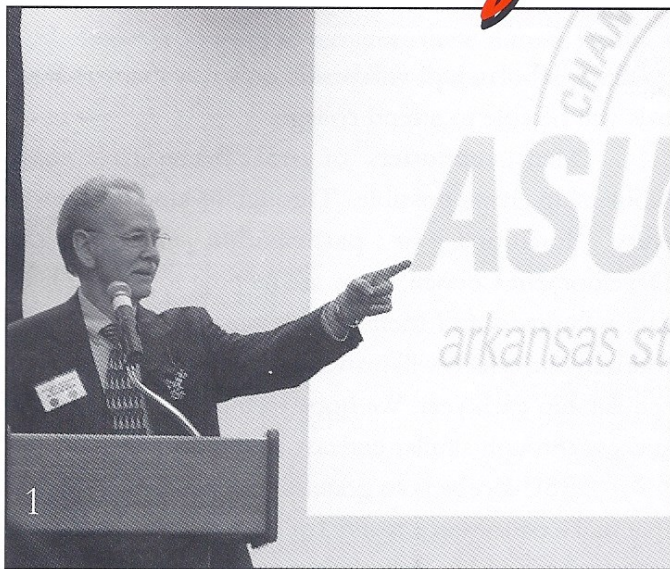
Anniversary



Photos from top left: 1) Gene Higginbotham (left) tells Keith Pinchback about the glory days playing basketball at ASU-Beebe. 2) Chuck Johnson (left) and Garth Martin share memories about playing basketball in the 1950s. 3) Coach Marvin Speight reunited with former players from the 1950s at the Friday night reception. 4) Alumni and friends enjoyed the family picnic held Saturday in the Owen Center Gym. 5) Former students met at several Friday night receptions. 6) ASU-Beebe Business Office Staff shared their spirit

by sporting the anniversary t-shirt sold by the ASU-Beebe Bookstore.

Highlights



Photos from top: 1) Dr. Eugene McKay introduces special guests and talks about the school's history at the 80th anniversary dinner. 2) More than 200 alumni, faculty, and staff joined the school for the Alumni Dinner and Service awards held March 31. 3) Basketball alumni from every decade met for the Alumni Basketball Players Reception March 30.

The ASU-Beebe Alma Mater, past and present, was showcased at the 80th Anniversary dinner by the ASU-Beebe Singers.

Below are the words to both selections.

ASU-Beebe Alma Mater

Composed and written by Mrs. Margaret Moore

ASU, ASU, Praise to thee will e'er ring true;
You boosted me along; Gave my life a song
And let the light come shining through;
So everywhere I go, I'll let the folks know
That you're my own, ASU.

ASU, ASU, You will e'er my strength renew;
The world may prove unkind;
Hardship I may find
Sailing with life's reckless crew;
To you my thought will turn, For our friends
I'll yearn; You'll see me through, ASU.

ASU-Beebe 2007 Alma Mater

Composed by Justin Johnson

**Words by Nona Cheatham, Patty
Wilson, and Dean King**

O hail to thee ASUB
We're here to praise your name
We stand and give a cheer for you
Our school of great acclaim

We come to have our futures forged
Midst delta soil and mountain slopes;
We're all encouraged to our best
A school of plans, of dreams and hopes.

O hail to thee ASUB
She stands with you and me.

FROM THE ADVANCEMENT OFFICE

2007 has been a great year for ASU-Beebe. The year is not even over yet, and we have had a great year. The 80th anniversary celebration in March was a great follow-up to the original Homecoming held in 2000. The event gave us the chance to celebrate our past and our heritage, while also recognizing the



Keith Pinchback, Vice Chancellor of Institutional Advancement

great alumni and friends that have made us the distinguished institution we are today.

ASU-Beebe has changed lives since 1927. You may hear that quite a bit this anniversary year. One way we are able to change lives is through our scholarship giving. Many of our students are first-generation college students, and they appreciate the assistance you make available to help them complete their education. As the cost of living and the cost of higher education continue

to climb, scholarships will be the only way many individuals will be able to attend college.

Many supporters of ASU-Beebe have made scholarship giving possible. Through in-kind gifts, monetary donations, or participation through our Development Council, many are helping to change lives. Our volunteers and friends made possible our first golf tournament, which will provide an additional full-tuition scholarship each year. We hope to build on that kind of success through similar endeavors and efforts.

ASU-Beebe is so grateful to the generous people that make education a reality for our students. There are many who provide their resources, time and talents to help ASU-Beebe and its students move forward and succeed. We appreciate your partnership and look forward to working with you for another great year.

Happy 80th Anniversary ASU-Beebe!

YOUR PLEDGE SUPPORTS

- Outstanding Alumni & Students
- Student Awards
- Community & Student Activities
- Alumni Special Events
- Faculty Awards
- ASU-Beebe Promotion

ARKANSAS STATE UNIVERSITY-BEEBE 2007-2008 ANNUAL FUND

I/We wish to make a gift to:

- | | |
|--------------------------------------------------------|-----------------------------------------------------------|
| <input type="checkbox"/> Chancellor's Cabinet (\$5000) | <input type="checkbox"/> Anniversary Club (\$100) |
| <input type="checkbox"/> Chancellor's Circle (\$500) | <input type="checkbox"/> \$35 (Friends of the University) |
| <input type="checkbox"/> Diamond Club (\$250) | <input type="checkbox"/> Other amount |

Enclosed is my gift of \$ _____ or my pledge of \$ _____ payable to Arkansas State University-Beebe's Annual Fund. I am employed by _____ and my gift will be matched by my employer.

Charge my credit card Visa ☐ MC ☐ Discover ☐ AE ☐
Account # _____

Donor(s) Name(s) _____ Email _____
Address _____ City, State, Zip _____ Phone _____
Social Security # _____ or Tax ID _____



GIFTS TO ASU-BEEBE ARE TAX DEDUCTIBLE.

Please return to Office of Institutional Advancement, P.O. Box 1000, Beebe, AR 72012.

For more information, please call (501) 882-8255.

ANNUAL FUND GIVING

ASU-Beebe is honored to recognize these alumni, faculty, staff, and friends who have made an investment in Arkansas State University-Beebe during the 2006-2007 Annual Giving Fund Campaign:

Lifetime Members 50,000 and Above

Community Bank
Cathy Eoff
John Deere Foundation
Dennis & Eva Gillam
Brenda Shurley
Scott Stevens - Pizza Pro

40,000-49,999

Ruth Couch
First Arkansas Bank & Trust

30,000-39,999

Marvin Jones
Richard & Thelma Powell

20,000-29,999

Letain DeVore
Harry Dougherty, Sr.
First Baptist Church of Beebe
Donald W. Reynolds Foundation

10,000-19,999

E. H. "Doc" & Ruth Abington
Eddie & Reita Adams
Baldor Electric Company
Walter & Louise England
Entergy - Searcy
Annieta Mann
Garth & Joanne Martin
Eugene & Judy McKay
Missouri Higher Education
Loan Authority (MOHELA)
Ben & Mary Anne Pickard
Regions Bank
Stephens Incorporated
Wal-Mart of Searcy
Nickie Whittaker

Chancellor's Cabinet

Marchia Sims
Ollie Mae Simmons

Chancellor's Circle

Doris Barnes
Blanford Laboratory
Tom & Polly Brown
Randy & Sherry Busbea
Jerry & Suzanne Carlisle
Dr. & Mrs. Charles F. Cole
Frank & Hazel Dickey
Barry & Linda Farris
Joe Hastings
John & Robin Hayes
Ted & Sharon Kalthoff
Kustom Klassics
Benji & Suzanne Lindsey
Millard-Henry Clinic
Bernard Nichols
Nancy Shefflette & John Hammes
Southwest Regional Medical Center

Diamond Club

Derek Barnes
Jacob & Katrina Farris
David M. Mayes
Keith McClanahan
Keith & Alana Pinchback
Service Group - Kaneaster Hodges

Anniversary Club

Addie Banks
James & Wilma Beard
W.E. & Shirley Beaumont
Sharon Been
Robert and Patsy Bryant
Candace Cooper
Rhonda Durham
Angela & Chuck Evatt

Joan Finney
Charlie & Rosemary Frame
Ashlee & Robert Giles
Nancy Hammes
Jerry & Nancy Jackson
Michael & Linda Jeffrey
Dr. Paul and Melissa Jenkins
Dr. Lance McGraw
Robert Mitchum
Colbie Moody
Charles & Faye Moore
Philip Petray
Ronald Russ
Jerry & Debbie Thompson
Vera Tolson
Angie & Steve Totty
Alvin & Cindy Wheeler
Dottie & Kenneth Whiteside
Rick & Rebecca Wolf

Friends of the University

Chris Boyett
Robert & Patsy Bryant
Debora Carpenter
Charlene Chambers
John & Mary Clowers
Skip Downing
Jeremy and Carissa Gillam
Blake Griffin
Mike & Charlotte Haynes
Phillip Martin
James Neely
Rick Qualls
Jerry Russell
Larry & Belinda Shook
Benny Ward
Dan Wicker
Delbert Wisdom

ASU-Beebe's Office of Institutional Advancement offers several annual gift categories to fit every level of giving: Lifetime Members (cumulative gift of \$10,000 or more); Chancellor's Cabinet (\$5000-\$9999); Chancellor's Circle (\$500-\$4999); Diamond Club (\$250-\$499); Anniversary Club (\$100-\$249); Friends of the University (\$35 or couple \$50-\$99).

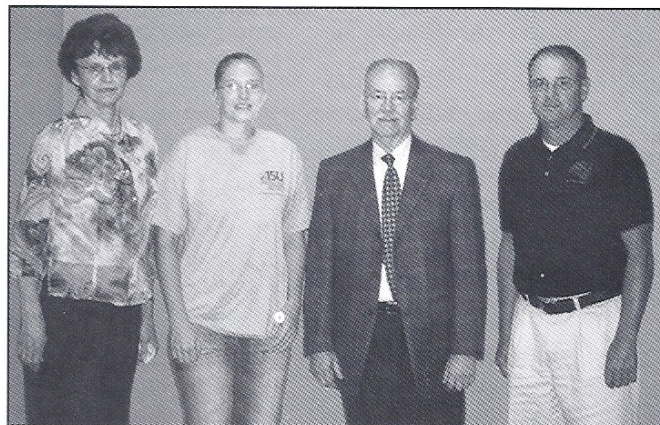
Information on the ASU-Beebe gift clubs may be obtained by contacting Keith Pinchback, Office of Institutional Advancement, P.O. Box 1000, Beebe, AR 72012 or calling (501) 882-8255.

We have made every effort to ensure that this list is correct. If you find that we have omissions or errors, please contact the Office of Institutional Advancement at the number above.

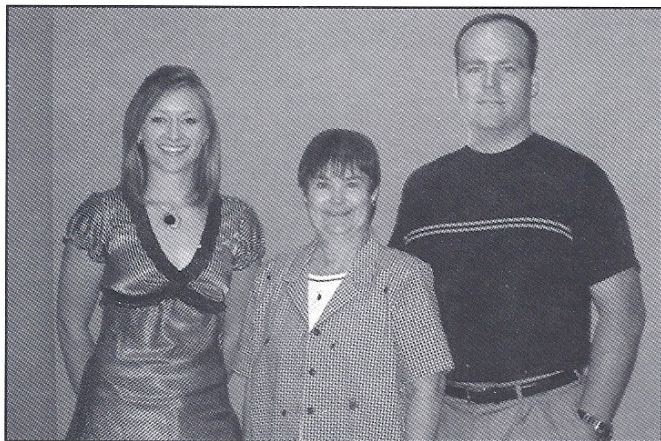
2007-2008 Scholarship Recipients



Keri Willis, with her mother Ellen Willis, is presented the Jones Family Trust Scholarship by Keith Pinchback, Vice Chancellor for Institutional Advancement.



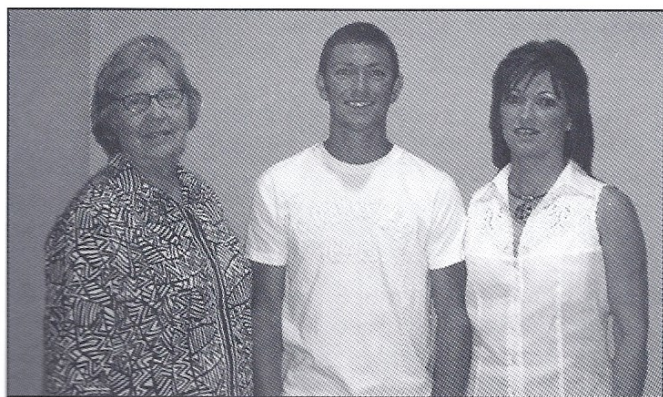
Dr. Ruth Couch, Development Council Member, Dr. Eugene McKay, Chancellor of ASU-Beebe, and Chuck Wisdom, President of the Development Council, present Cindy Phillips with the Development Council Scholarship.



Brenda Shurley and her son Billy Shurley Jr. present Lashainea Bettis with the Brenda Shurley Scholarship.



Andrew Bell, with his mother Laura Bell, is presented the Pizza Pro Scholarship by Keith Karolychik and Daniel Murphy



Benjamin Scott, with his mother Belinda Scott, is presented the Jeannie Lindsey Scholarship by Jeannie Lindsey.

ASU-BEEBE ALUMNI ASSOCIATION

The ASU-Beebe Alumni Association was chartered in 2000 and it is the primary intent of the Association to retain close ties between students, former students, and friends of the University.

The Association offers individuals the benefits of reuniting with old friends, making new friends who share a common interest of supporting ASU-Beebe and higher education, and offering opportunities for connecting with other alumni, students, and the surrounding communities.



STAY IN TOUCH!

You can always update your contact information with ASU-Beebe online at www.asub.edu/alumni_friends.

Let us know if you are moving,
have a new email address,
or if you have any great news to share!

Join the Association Today! Dues are only \$6 per year or \$10 for two years.

Yes! I'd like to join the ASU-Beebe Alumni Association!

Full Name _____
Maiden Name _____
Mailing Address _____
Phone Number _____
Email address _____
Years attended ASU-Beebe/Graduation Year _____
Degree/Program of Study _____

Please return membership form to: ASU-Beebe Office of Advancement, P.O. Box 1000, Beebe, AR 72012.
For more information, call (501) 882-8255.

ASU-Beebe Alumni Association is now online at www.asub.edu/alumni_friends.
Join the Association, update your contact information, check for current events and much more!

Alumnus of the Year

By Melissa Jenkins

Like many, Robert Evans loves Arkansas State University. Unlike many though, he gets to share that love of ASU everyday through the legislative process as Executive Director of Governmental Relations for the entire system. This October, he will be recognized as ASU-Beebe's Outstanding Alumnus at the annual conference for the Arkansas Association of Two-Year Colleges.

A former ASU-Beebe student and graduate of ASU-Jonesboro, Evans has always loved politics and government. He attributes that fondness to his mother, a naturalized citizen from Quebec, Canada. She gave him a great understanding of politics and helped him see it in a different way.

As part of a U.S. Air Force family, Evans grew up all over the world. He lived in France, Hawaii and numerous U.S. states. He claims Arkansas as his favorite place and makes his home today in Jacksonville. He is the proud father of two grown children, Derek and Katey. His late wife, Julia, shared his love of ASU.

Evans began ASU-Beebe in 1976 after graduation from Jacksonville High School. He got his first taste of politics as Student Government Association President in 1979. Through that experience, he served on the committee to select the ASU President, Carl S. Whillock. He says that his favorite teacher, Phil Petray, introduced him to those experiences and remains a close friend today. He also participated in the popular Agri Club.

He credits ASU-Beebe with great academic support and assistance. "Even then, ASU-Beebe had a good number of non-traditional students. The one-on-one academic experience we received was essential to really knowing the subject matter. I am grateful for that experience," he said.

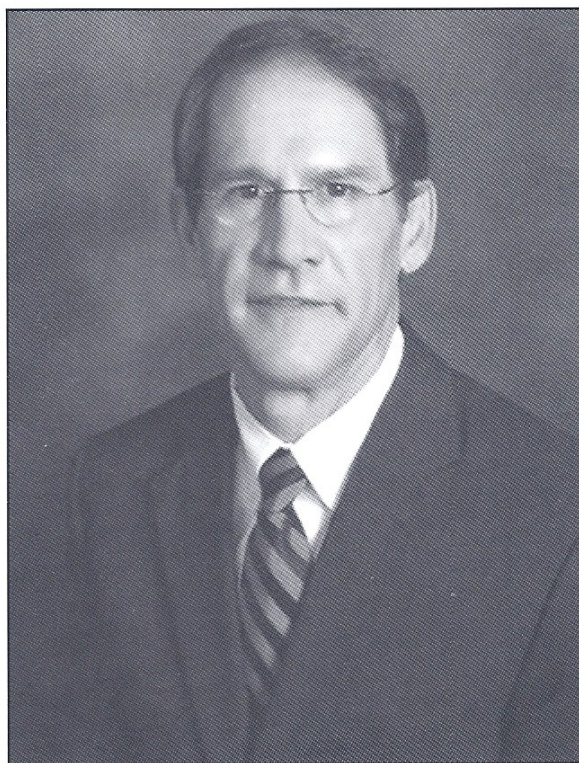
After receiving his agriculture degree from ASU Jonesboro in 1980, Evans began his career with Farm Bureau of Arkansas. He held several positions through Farm Bureau and found his home in legislative affairs in 1985. It was a natural fit because of his love of politics and government. He worked in lobbying for Farm Bureau until he joined the ASU system in 1998.

Today he remains as strong an advocate for ASU as any. As a first-generation college student, he understands the importance of a college degree and wishes more Arkansans could achieve that goal. He believes that educational attainment is a crucial and vital issue for the state. "Education is individually and collectively the key to freedom. Tying economic development with better education of our citizens is what will move Arkansas forward," Evans said.

He says that because Arkansas has lower numbers of persons with college degrees, the ASU system is a vital part of the state's future. The strength of the two-year schools and the transferability between those schools and the main campus at Jonesboro is one way to remove the barriers keeping people from college.

"My dream for the ASU system is continued growth and success of its many academic and outreach programs. Those successes will tie directly to economic advances for Arkansas citizens to increase per capita income and the livelihoods of fellow citizens," said Evans. "Specifically, I admire ASU-Beebe for growing other institutions in the ASU system and bringing opportunities to more people."

Robert Evans believes he received much from ASU, both in Beebe and Jonesboro. Today, ASU receives much from him.



The one-on-one academic experience we received was essential to really knowing the subject matter. I am grateful for that experience.

--Robert Evans

Chesapeake Awards Petroleum Technology Scholarships

Chesapeake Energy Corporation and the Cleburne County Rotary Club recently presented Jesse Foster with a scholarship to attend Arkansas State University-Heber Springs to earn a Certificate of Proficiency in Petroleum Technology.

Chesapeake has agreed to fund \$50,000 in scholarships through two Arkansas Rotary districts to state students who are interested in fields of study relevant to the energy industry.

The Chesapeake scholarships will be offered through Rotary Districts 6150 and 6170 which include White, Faulkner, Cleburne, Van Buren, Conway and Pope Counties. These are the counties where Chesapeake is currently focusing its exploration and development of natural gas from the Fayetteville Shale formation.

Foster, of Pleasant Plains, graduated from Midland in 2002. Since graduation, Foster has been trying to find a career that is right for him and says he has been interested in the energy industry since the words "Fayetteville Shale" were first mentioned. "I am very excited about this opportunity to receive training for the energy industry," Foster said. "ASU-Heber Springs and Chesapeake are making available the training and the



Pictured from left to right: Carol Troy, Chesapeake's director of corporate communication; Lowell McLanahan, member of Conway Rotary Club, representing Rotary District 6170; Jessie Foster, scholarship recipient; Paul Roberts, Heber Springs Rotary President; Judy Jones Sims, immediate past-governor of Rotary District 6150; Alex Aitken, Cleburne County Rotary Club; Dr. McKay, Chancellor of ASU-Beebe; Joe Tournear, Manager of Heber Springs Wal-Mart

financial assistance I need to get me started on a promising career."

"Chesapeake is thrilled to be working with Rotary and educational institutions in this area to encourage people interested in the energy industry. We believe in Arkansas and see great economic opportunities here for everyone involved," said Carol Troy, Chesapeake's director of corporate communication.

continued on pg. 19

ASU-Beebe Remembers Dean Walter England



Dean Walter D. England

Walter D. England served as Dean (Chancellor) of ASU-Beebe for 13 years from 1964 to 1977. Born in Elm Store, Arkansas in 1919, Dean England was a life-long educator. His career began in a one-room school and progressed to principal, superintendent, and then higher education.

Under England's leadership, enrollment and progress soared at the college during the 1960s and 1970s. Once threatened for closure because of low enrollment, Dean England led ASU-Beebe's transition to the modern college it is today.

At least four buildings were completed during his tenure: Quapaw Hall, the Math and Science Building, Abington Library, and the Owen Center.

Dean England considered teaching to be a calling. Eight of his siblings were also educators. Years before his death, he established the England Challenge Scholarship at ASU-Beebe. In late 2006, the Math and Science Building was renamed the Walter England Center. His hobbies included raising his Pinzgauer cattle and volunteering at White County Medical Center.

Dean England is survived by his wife of 55-years, Louise Horner England; three daughters, Cindy Wright, Abbie Covington, and Janie Byard; seven grandchildren; and 12 great-grandchildren.

Memorials may be made to ASU-Beebe, England Challenge Scholarship, P.O. Box 1000, Beebe, AR, 72012.

Community Bank Presents 2007-2008 Concert Series



Arkansas State University-Beebe and Community Bank will once again present a year of world-class concert events and entertainment.

The concert calendar includes:

Harlem Gospel Choir October 11, 2007

The Choir was founded in 1986 by Allen Bailey, who got the idea for the Choir while attending a celebration in honor of Dr. Martin Luther King, Jr. at the renowned Cotton Club in Harlem. The Choir presents the finest singers and musicians from Harlem's Black Churches.

Arkansas Brass Quintet January 24, 2008

Five wonderful musicians, equally at home in the symphony or the jazz band. Performing the best music from renaissance to ragtime. Acclaimed for their ability to entertain all generations, they've thrilled audiences throughout the South.

Robert Channing, Hypnotist and Mentalist March 6, 2008

Robert Channing's show is amazing, riveting and clean - with a perfect blend of comedy. This dramatic yet up-beat program masterfully illustrates the strange and incredible mysteries of the mind.

Best of Broadway presents Broadway Showstoppers April 3, 2008

This musical journey includes selections from classic musicals, long running blockbusters and the hottest new shows. Experience comedy, passion and romance on an electrifying roller coaster ride down the Great White Way.

Ticket prices are \$30 for four events or \$10 per concert event. Senior citizens tickets are \$8, and student ticket prices are \$3. Alumni Association Members may purchase tickets for \$9 per event or \$25 for season tickets.

All concert series events begin at 7:30 p.m. and are held in the Owen Center Theater on the Beebe campus.

For more information, please call the ticket office at (501) 882-8351.

ASU-Beebe Offers 80th Anniversary Commemorative Artwork for Sale

Take a stroll down memory lane and celebrate ASU-Beebe's 80th Anniversary with a 12x18 original drawing of the ASU-Beebe campus, past and present. This once-in-a-lifetime piece is available for a limited time for only \$50. *Proceeds from the commemorative artwork will benefit student scholarships for ASU-Beebe students.*



Yes! I want to order the ASU-Beebe 80th Anniversary Commemorative Artwork!

Name(s): _____ Phone: _____ Email: _____
Address: _____ City, State, Zip: _____
Number of Copies: _____
What address do we ship to? _____
Method of Payment: ☐ Cash ☐ Check ☐ Charge my credit card:
☐ Visa ☐ MC ☐ Discover ☐ AE Account # _____

To complete your order, mail form and payment to Office of Institutional Advancement, P.O. Box 1000, Beebe, AR 72012.

Arkansas State University-Beebe Students Awarded at Banquet

Several Arkansas State University-Beebe students were honored at the annual ASU-Beebe Awards Banquet. The students were presented division awards for leadership and outstanding scholastic achievement in their major fields of study.

Selected for the English and Fine Arts Awards were Brandin Gibbons, of El Paso, and Timothy Lynn, of Searcy. The Advanced Technology and Allied Health Awards went to Wilson Earnheart, of Batesville, and Krystal Gunter, of Cabot. The Business and Agriculture Awards went to Michael Harris, of Pleasant Plains, and Colleen Hopkins, of Bee Branch. The Education and Social Sciences Awards went to Charles Jones, of Ward, and Michelle Metheny, of Cabot. The Mathematics and Science Awards went to Steve Finder, of Cabot, and Andrew Mears, of Georgetown. The Occupational Technology Awards went to Nicholas Hare, of Searcy, and Craig Runkle, of Cherry Valley.

The ASU-Beebe Awards went to Laban Gilmore, of Sparkman, and Emily Fisher, of Roe. The ASU-Heber Springs Award went to Rachel Michelle York, of Drasco, and the ASU-Searcy Awards went to Nicholas Hare, of Searcy, and Jessica Seaton, of Augusta. Teresa Yates, of Batesville, received the Arkansas State University Jonesboro program award and Greta Schoneman, of Jacksonville, and Mary Whitney, of Lonoke, won the awards for the Little Rock Air Force Base Degree Center.

The University's most prestigious award, the Citizenship Award, based on overall academic and leadership qualities, was presented to Nan Peckman, a mid-level education major, from Pangburn, and Christian Shireman, a liberal arts major, from Cabot.

Additionally, Lisa Bryant, instructor of biological science received the Positive Teacher Award, and Gail Wilkins, University Café, was presented the Positive Staff Award.



ASU-Beebe Citizenship Award winners Christian Shireman (left) and Nan Peckman (right) were chosen by the faculty and staff for their contributions to the campus in areas of education, activities and leadership.

Chesapeake, *continued from pg. 17*

ASU-Heber Springs will begin offering courses toward a Certificate of Proficiency in Petroleum Technology in July; however, it is not required that all courses be taken in one session. Courses will be offered several times during the year.

"We are very interested in providing an educated workforce for this new industry and are very happy Jesse is able to start our new program with a scholarship from Chesapeake," announced Dr. Dianne Tiner, vice chancellor of ASU-Heber Springs.

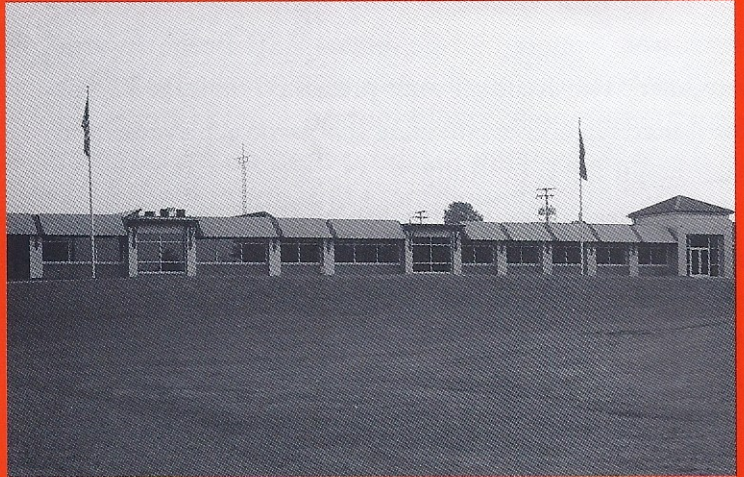
For more information about the Petroleum Technology courses at ASU-Heber Springs, contact the Admissions Office at (501) 362-1100.

Renovations Underway at ASU-Searcy Campus

Changes are taking place at ASU-Searcy, a technical campus of ASU-Beebe!

A multi-year master planning process is currently underway, with the first phase completed. The master plan calls for renovations and upgrades to the physical plant, as well as additions of classroom and lab space in the subsequent phases. The plan will allow the campus to continue growing and expand upon its mission of offering technical and career training.

The first phase updated the front of the Searcy campus and will bring together administrative and student services functions, making a more user-friendly campus. Several other changes and updates, including remodeled restrooms, roofing renovations, and a new HVAC system, have taken place since ASU-Searcy became part of ASU-Beebe in 2003. ASU-Searcy, which has been educating students for 40 years, will continue to see numerous changes over the coming years as the master plan progresses.



classrooms and lab space a premium. The new classes and labs will be a welcome addition. The merger with ASU-Beebe has been a huge plus for the former Foothills Technical Institute and for the community of Searcy,” said Don Harlan, vice chancellor for ASU-Searcy.

“ASU-Searcy is experiencing active student growth in full-time and part-time students, making



Beebe, Heber Springs, Searcy
Little Rock Air Force Base

OFFICE OF INSTITUTIONAL ADVANCEMENT
P.O. BOX 1000
BEEBE, AR 72012

NON-PROFIT
ORGANIZATION
U.S. POSTAGE
PAID
FAYETTEVILLE, AR
PERMIT NO. 1