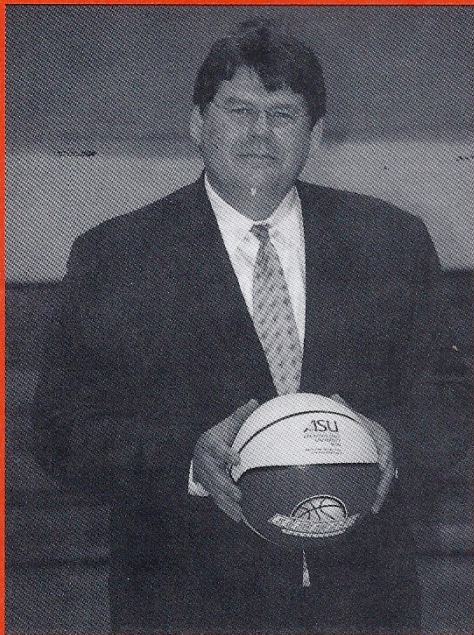


ARKANSAS STATE UNIVERSITY- B E E B E

MEETING THE CHALLENGE

VOLUME 11 • FALL 2005



BEEBE



HEBER SPRINGS



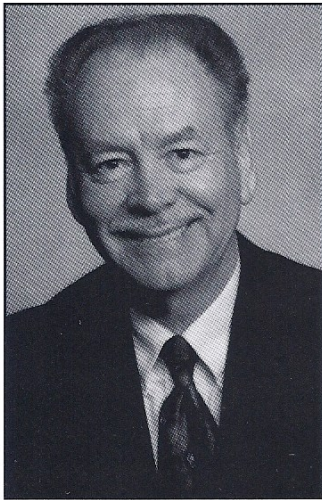
SEARCY

LRAFB

www.asub.edu

Message from the Chancellor

GROWTH AND EFFICIENT SERVICE



Dr. Eugene McKay

Arkansas State University-Beebe has had a good year. Enrollment continues to grow at Beebe, Searcy, and Heber Springs; even our programs at the Little Rock Air Force Base are beginning to recover from the reduced enrollment as result of the war in Iraq. *Arkansas Business* listed ASU-Beebe as 10th in enrollment among the state's 48 public and private colleges. It also listed ASU-Jonesboro's MBA program at Beebe as the 10th largest in the state.

The economy has improved significantly, and ASU-Beebe had a good legislative session last spring, especially for the Heber Springs campus, thanks to the leadership of Speaker Bill Stovall and our other legislative friends. Thanks to the Base Funding we received for Heber Springs, we hope to be able to use the Cleburne County sales tax for buildings for the new campus.

During the past few years when our enrollment was growing and our revenue was declining, we spent a great deal of time planning for future growth so we would be ready when money became available. We completed our master plan for ASU-Heber Springs, merged Foothills Technical Institute into a new ASU-Beebe campus, and are developing a master plan for ASU-Searcy as a technical campus of ASU-Beebe.

We reorganized our administrative structures to promote efficiency, reduce unnecessary duplication, and ensure better quality control. If we want to continue to grow and provide more services for our students and communities, we must learn to do more with what we have. Because we teach programs at Beebe, Searcy, Heber Springs, and Little Rock Air Force Base, we cannot totally avoid duplications. Core courses must be taught at all campuses, but many routine administrative functions can be administered from one campus and thus reduce personnel costs for all campuses. For example, Don Harlan, the vice chancellor for ASU-Searcy supervises the non-credit workforce training programs, such as welding, adult education, and short computer courses on all of our campuses. Ted Kalthoff, vice chancellor for academic affairs, supervises all credit programs at all campuses. Chris Boyett, the director of distance learning, ensures quality for all of our distance learning courses. The ASU-Beebe Director of Financial Aid, Dena Prior, distributes financial aid to students at all campuses. The more efficient we become, the more access to services we can provide with the money we have. We prefer to spend more money on service and less on administrative overhead.

One advantage ASU-Beebe has is that it can take the strengths of each campus and easily transport them to all of our campuses. For example, ASU-Beebe was able to quickly transport its Associate of Arts programs to the new campus at Heber Springs, making it possible for 57 students to receive associate degrees at Heber Springs last May. One graduate was an 85 year old World War II veteran. The Searcy campus was able to take its GED and welding programs to Heber Springs and to respond to training needs of local industry. Now we are looking for unique programs for ASU-Heber Springs, perhaps related to the lake, environment, or tourist interests so it can attract students from outside Cleburne County.

This year was also a good year because we received another perfect audit, produced more associate degree graduates than any other two-year college, and expanded our concert/lecture series thanks to the support of Community Bank. We also established new scholarships thanks to the support of several friends of the University.

While it is much less expensive for ASU-Beebe to operate its four campuses than it would be for the state to operate each campus as a stand-alone campus, it does cost ASU-Beebe more for staff and buildings to operate on four sites than it would if all students were in Beebe. Therefore, ASU-Beebe must work for additional support for its multi-site campus.

MEETING THE CHALLENGE

is published annually by the Office of Institutional Advancement, Arkansas State University-Beebe, Palm and Iowa Streets, Beebe, AR 72012-1000. Bulk non-profit rate postage paid at Little Rock, AR. This publication is distributed free of charge to ASU-Beebe alumni, supporters, and personnel. For additional copies, please contact (501) 882-8255. Edited by Melissa E. Jenkins. Contributing Writer/Photographer, Colbie Moody. Web Editor, Robert Doyal. Professional Photography, Stuart Holt.

ASU-Heber Springs Receives Funding for Campus

By Colbie Moody

Arkansas State University-Heber Springs, a center of ASU-Beebe, recently received \$1 million in General Improvement money with the help of Representative Bill Stovall.

ASU-Heber Springs, which until recently has been operating without state base funding, will be able to begin the construction on the new campus. ASU-Heber Springs received \$602,989 this year and will receive \$739,489 in 2006. Representative Stovall, a Cleburne County native, was instrumental in helping ASU-Heber Springs receive the funding.

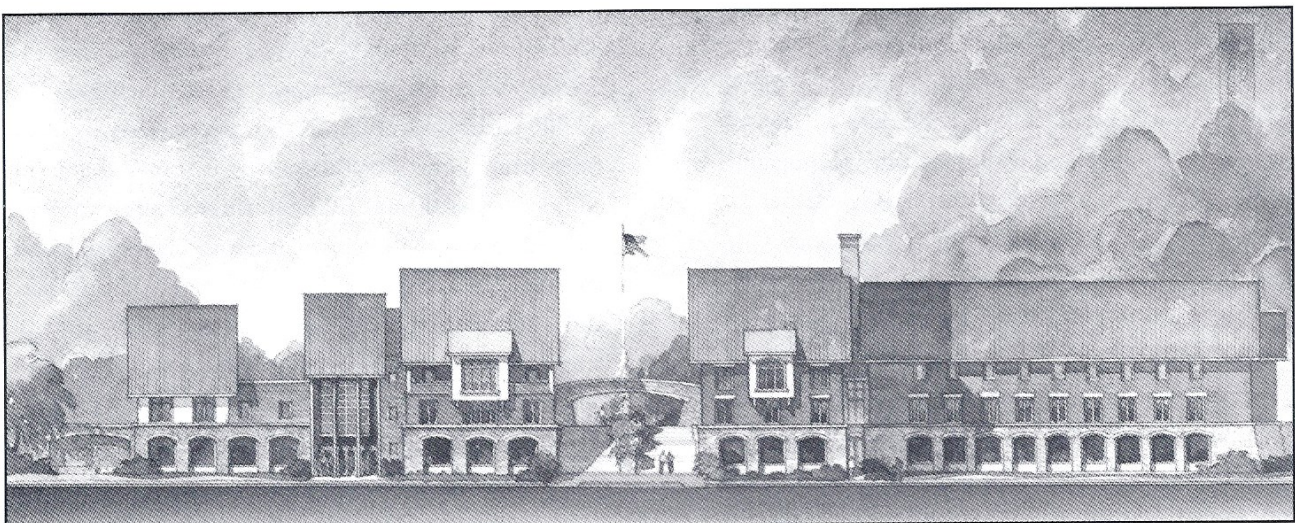
When asked why he supports higher education, Stovall said, "It begins with my own lack of opportunity, not being a higher education graduate. If the state neglects funding, it drives up tuition and fees and it becomes less affordable for those accessing higher education."

Representative Stovall was born and still resides in Quitman. Stovall has seen the need for funding at ASU-Heber Springs. "ASU-Heber Springs wasn't receiving the revenue needed. This is evident everyday by the increased number of students," Stovall said.

ASU-Heber Springs has seen tremendous community support. Stovall said that the community benefits from ASU-Heber Springs being in Cleburne County and the new campus will increase the opportunities. "ASU-Heber Springs affords opportunities to traditional and non-traditional students to receive associate degrees," Stovall commented. "Families have the opportunity to send their children with affordable rates and still be at home to help alleviate peer pressure. ASU-Heber Springs also gives skills training to local industries."

Dr. Dianne Tiner, the vice chancellor at ASU-Heber Springs, is appreciative of the funding the campus has received. "We will be able to expand the facilities and instructional programs," Tiner said. "Since we received the funding, we have hired four new positions including two full-time instructors."

"We hope to break ground with the new buildings this spring. This will increase educational opportunities for all which in turn enhances local economy," Tiner said. *continued on page 8*



Architectural renderings of the proposed new campus of ASU-Heber Springs located at Sugarloaf Mountain.

Ted Kalthoff Joins ASU-Beebe

By Colbie Moody

Dr. Theodore Kalthoff of Concordia, Kan. has been selected as the new Vice Chancellor for Academic Affairs. Dr. Eugene McKay, chancellor, announced recently that Kalthoff will replace Dr. Chuck Welch.

A Missouri native, Kalthoff graduated with his undergraduate and master's degree from the University of Missouri, where he also completed a specialist degree in Education Administration. Kalthoff received his doctoral degree from Southern Illinois University-Carbondale in 1980.

"We are delighted to have Dr. Kalthoff for our team," McKay commented. "He brings experience to Academic Affairs. He has energy and enthusiasm. He will provide good academic leadership to the university," McKay said.

Most recently Kalthoff was the Vice President for Academic Affairs at Cloud County Community College in Concordia, Kan. where he was responsible for all activities related to faculty and instruction for both on and off campus programs. Kalthoff has also spent time in the classroom as an instructor of math and education.

Kalthoff has worked in academia for 30 years. While working as the Dean of Academic Affairs at the Cleveland Chiropractic College in Kansas City, Kalthoff took them through the accreditation process for North Central Association of Colleges and Schools.

"I am impressed with the quality of programs and the accreditation of the faculty at ASU-Beebe. I hope to continue the quality of programs offered, increase enrollment, and to work with division chairs and staff to meet the needs of the community and students," Kalthoff said.

Two-year colleges offer higher education in or near communities that may not have four-year institutions within a reasonable geographic range of most people's homes, and the cost is generally less than that of



Dr. Theodore Kalthoff

four-year institutions.

ASU-Beebe is third in enrollment among Arkansas's 22 two-year schools that provide numerous educational programs, opportunities for career training or retraining, and continuing education.

"As a two-year open admission school, we need to be here to serve all students, transfer, vocational training, traditional, non-traditional, and developmental education students. We want to help students meet their educational needs and achieve their educational goals," Kalthoff said.

Currently, two-year colleges serve more than 43,000 credit students across the state, according to data from the Arkansas Association of Two-Year Colleges. In addition, more than 48,000 residents are continuing their education and upgrading skills through non-credit courses. The average student is 27.5 years old, a female, and works part-time, although many work full-time and attend classes at night, on the weekend, or through distance education.

Last spring, 3,650 students were enrolled at ASU-Beebe from 44 counties throughout the

continued on page 18

Dr. Ruth Couch Establishes Endowment

By Melissa Jenkins

She came to Arkansas State University-Beebe after seeing an advertisement on the wall at Oklahoma State University, and 34 years later, the institution calls Dr. Ruth Couch one of its greatest family members. Even after retiring as ASU-Beebe's Vice Chancellor for Academic Affairs, Dr. Couch continues to develop the campus and to share her love of learning, most recently with her gift to establish the Dr. Ruth Couch Endowment Scholarship.

"Because I had so much encouragement with my own education, both emotionally and financially, I wanted to be able to give a part of that back," said Couch. It is truly rewarding for Couch to see students succeed and to know that she can now be a part of that success. She recently shared her excitement for meeting Brian Halldorson, the first Couch Scholarship recipient and second-year student at ASU-Heber Springs.

Couch credits her own mentors for making the education she dreamed about a reality. "I received my first scholarship to attend Southern Arkansas University from the Quota Club in Magnolia. After that, more doors were opened," she said.

From SAU, she attended Henderson State University, Oklahoma State University, as well as Oxford University's Trinity College and the Woman's College of Georgia for special studies. Her education and its experiences led her to touch lives as a public school teacher, as a full professor at ASU-Beebe, and then as ASU-Beebe's longest-serving Vice Chancellor for Academic Affairs.

"It has always been very special to me to see how much our ASU-Beebe students experience at college, how it changes their lives. Seeing and knowing their adversity by reading their essays and having them in class and then watching them finally succeed is fulfilling," she said.

"This endowment continues Dr. Couch's



Dr. Ruth Couch. *Photo Courtesy of Diana Monroe, University Development at ASU.*

commitment to serve ASU-Beebe," said Dr. Eugene McKay, chancellor. "She has shown great dedication to the university and given so much of herself, and for that we are very grateful."

Today, Couch not only serves as a role model for many, but she has given back the gift of education and opportunity that was given to her as a young woman. Couch's scholarship endowment will perpetually help ASU-Beebe students to finance their education and to find their own place in the world.

"Several students over the years have told me that I've been a role model, which is surprising to me. But, if I did serve as an encourager for our students, I'm very happy for that," said Couch.

Marvin Wayne Jones Family Invests in Students

The Marvin Wayne Jones Trust has allocated \$10,000 to the Marvin Wayne Jones Family Trust Scholarship Fund to provide Arkansas State University-Beebe's business students with instruction of capital markets through real-life investing opportunities.

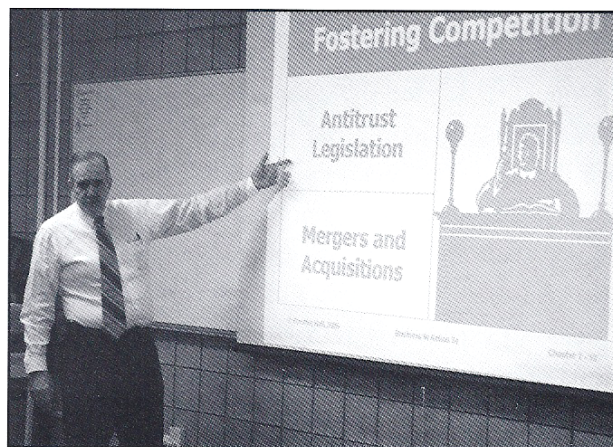
With the help of Bob Mitchum, business and agriculture chair, students will use the \$10,000 to learn investment techniques by buying stocks and following their progress. All earnings above the \$10,000 will be donated back to ASU-Beebe for student scholarships on behalf of the Marvin Wayne Jones Family Trust.

"Students investing money, and potentially creating a profit from those investments, will create a foundation that students can build on throughout college and carry into the business world," Mitchum said.

Students will initiate trades this semester in Contemporary Business Concepts taught by Mitchum. Students will research stocks in groups with faculty members as advisors to dis-

cuss the consideration of each stock purchase. Five stocks will be chosen for investment and students will track them throughout the semester. Through the use of biographical sketches, students will be introduced to some of the most

continued on page 15



Mr. Bob Mitchum, business and agriculture chair, lectures during Contemporary Business Concepts, a class where students will have the chance to make real stock investments courtesy of the Marvin Wayne Jones Trust.

Nettles Family Updates Memorial Scholarship

Reita Nettles Adams, daughter of the late Denver E. Nettles, long-time Arkansas State University-Beebe professor, recently announced that the family's Denver E. Nettles Memorial Scholarship will become the Denver E. and Ruby Nettles Memorial Scholarship. The change reflects the family's wish to also memorialize their mother, Ruby Nettles, who recently passed away.

"My father was a professor at ASU-Beebe from 1964-1984, but my mother also supported the college and initiated the idea of a memorial scholarship for a deserving agriculture student. We wanted her name to be added to the scholarship to show her support and for her life to also be remembered," said Adams. In addition to serving as assistant professor of agriculture, Nettles was also division chair of Applied Arts.

The original scholarship was established in 1990 to be awarded to an ASU-Beebe agriculture student each year. The scholarship places emphasis on student need before scholastic standing. The Agriculture faculty selects the recipient each year.

"I would hope that all of his agriculture students would take an opportunity to help continue the memory of such a fine faculty member as Mr. Nettles. Students who knew him during his 20-year tenure at ASU-Beebe were touched by his dedication to teaching and the contributions that both he and his family made to their education," said Barry Farris, vice chancellor for external and advanced programs and former student of Mr. Nettles.

The Nettles family welcomes any persons interested in honoring the memory of Mr. and Mrs. Nettles, and at the same time, supporting agriculture students, to contribute to the Denver E. and Ruby Nettles Memorial Scholarship fund. Individuals wishing to make a contribution to this scholarship or those interested in establishing a new scholarship may contact Keith Pinchback, Office of Institutional Advancement, at (501) 882-8255.

ASU-Beebe currently awards 13 scholarships that have been provided through private donors to benefit ASU-Beebe students.

Arkansas Guard Offers Free Tuition Benefit

Arkansas State University-Beebe recently signed a Memorandum of Understanding with Major General Don Morrow, the Adjutant General of the State of Arkansas, to grant tuition benefits to Army and Air National Guard members attending ASU-Beebe and its campuses.

Chancellor Eugene McKay and General Morrow signed the Memorandum of Understanding at a ceremony held on the ASU-Beebe campus in September. The MOU states that the Army National Guard will pay 100 percent of tuition for Army Guard soldiers and the Air National Guard will pay for 75 percent of tuition cost for its members. ASU-Beebe has agreed to waive the remaining 25 percent for Air Guard members. The tuition benefits are offered for Guard members attending all four campuses of ASU-Beebe.

“The Guard is a great asset to the state of Arkansas. I would like to thank ASU-Beebe for this step. This will benefit our members’ educational needs and benefit our state,” General Morrow said.

continued on page 19



General Morrow presented Dr. McKay with a Minuteman statue in appreciation for the tuition assistance given to the Army and Air National Guard.

ASU-Searcy Begins Master Planning Process

A master planning process is underway for Arkansas State University-Searcy, a technical campus of ASU-Beebe.

Since merging with the former Foothills Technical Institute in 2003, ASU-Beebe has helped to continue and advance the legacy of career and technical training at the institution. That commitment continues with a long-range master planning process that will consider how the Searcy campus can continue to meet workforce and training needs.

“We want to expand upon the programs and curriculum being offered at our Searcy campus to meet the current and future needs of the region,” said Dr. Eugene McKay, chancellor.

The process has assessed requests for curriculum as well as facilities needs. While still in the early stages, surveys have been produced for both campus

and community input. In-depth facility and infrastructure enhancements have been considered, as well as ways to beautify and update the campus.

As part of the planning process for what the campus will offer and how the campus will look, a community meeting was held in October to solicit feedback from the general public and local partners.

“ASU-Searcy is excited about the Master Planning Process. As the process continues it will provide an opportunity for community input and feedback to assure that we are addressing individual, as well as, community needs. We look forward to involving the business and industry segment of our community as we make adjustments in the future education and training services that we provide to them,” said Don Harlan, vice chancellor for ASU-Searcy and workforce/economic development.

ASU-Beebe to Offer ROTC Course

By Colbie Moody

Arkansas State University-Beebe will offer an Army Reserve Officer Training Corps (ROTC) program from Arkansas State University Jonesboro, starting in August on the Beebe campus.

ROTC combines classroom work with practical instruction on how to take charge and take command thus providing skills that can help you succeed in either a military or civilian career. Foundations of Officership is the first course in the ROTC program and will be open to students in August.

Students may enroll in the Basic Courses without incurring a military obligation. The ROTC Basic Courses consist of four courses designed to be taken one each semester during the freshman and sophomore years. These courses include: Foundations of Officership, Basic Leadership, Individual Leadership Studies, and Leadership and Teamwork.

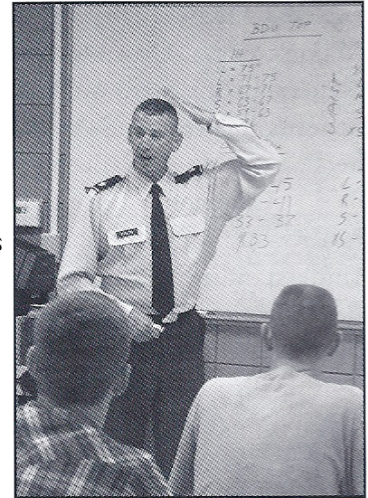
Tiffany Cantrell joined the ROTC program at Arkansas State University to become a pilot. She is now a 2nd Lieutenant and was recently selected to attend training as a Blackhawk helicopter pilot that will provide medical evacuation for injured personnel. "I joined the ROTC program to first serve my

country but it also teaches leadership and responsibility. These are two important traits for which employers are looking," Cantrell said.

No military commitment is required to the Army until the Junior year. All ROTC courses are electives and may

count towards graduation. Foundations of Officership will be offered one day a week with a physical training lab following the class. The course will examine the organization and role of the Army and the lab will include adventure training such as rope courses, rock climbing, and repelling.

"The instructors from the ASU ROTC program are the best in the state. You will not find many officers that will do physical training with you everyday. They lead by example," Cantrell said of the instructors.



ROTC Instructor Major Fuller starts the semester with an explanation of Army dress.

Heber Springs, *continued from page 3*

ASU-Heber Springs has been a part of ASU-Beebe since 1999 and has seen growth each year. Several associate degrees are offered at ASU-Heber Springs, including an associate's degree in Welding.

"I continue to be impressed with the support from ASU-Beebe and Arkansas State University that they provide to the ASU-Heber

Springs campus," Stovall said.

"I appreciate Speaker Stovall and his leadership that resulted in base funding for ASU-Heber Springs and for all ASU campuses," Dr. Eugene McKay, chancellor of ASU-Beebe said. "He has provided leadership as Speaker of the House and all of us at ASU-Beebe are proud to count him as one of our supporters."

MOHELA Donates to Scholarship

Arkansas State University-Beebe recently received a \$5,000 donation from the Missouri Higher Education Loan Authority (MOHELA). This is MOHELA's first installment of a \$15,000 pledge to ASU-Beebe's Development Council Endowment Scholarship, which has raised over \$103,000 in scholarship monies to benefit second-year students. MOHELA is one of the top 10 holders and servers of student loans in America and provides students with needed capital to finance their education through its partnerships with local, regional and nationwide lending institutions. Those that wish to donate or pledge to the scholarship fund, may contact the Office of Institutional Advancement at 501-882-8255.



Rita Toland, Senior Account Representative for MOHELA, presents Keith Pinchback, ASU-Beebe's Director of Institutional Advancement, with MOHELA's first installment of its \$15,000 pledge to ASU-Beebe's Development Council Endowment Scholarship.

Community Bank Donates to ASU-Beebe Scholarship Program

Community Bank of Beebe recently made a generous donation to Arkansas State University-Beebe's academic scholarship fund. Those pictured (from left) are: Jerry Carlisle, vice chancellor for finance and administration; Dr. Eugene McKay, ASU-Beebe chancellor; Chuck Wisdom, Community Bank business development officer; and Keith Pinchback, director of institutional advancement. ASU-Beebe awards approximately 250 academic scholarships annually. Additionally, the University ranks third largest of the 22 two-year colleges in the state, with an enrollment of 5,628 for the 2004-2005 year.



Annual Fund Giving

ASU-Beebe is honored to recognize these alumni, faculty, staff and friends who have made an investment in Arkansas State University-Beebe during the 2004-2005 Annual Fund Giving Campaign.

Lifetime Members

E. H. "Doc" & Ruth Abington
Reita & Eddie Adams
Community Bank
Dr. Ruth Couch
Letain DeVore
John Deere Foundation
Harry K. Dougherty Sr.
Walter & Louise England
Entergy of Searcy
First Arkansas Bank & Trust
First Baptist Church, Beebe
Dennis & Eva Gillam
Marvin Jones
Garth & Joann Martin
Missouri Higher Education
Loan Authority (MOHELA)
Ben & Mary Anne Pickard
Richard & Thelma Powell
Regions Bank
Billy & Brenda Shurley
Stephens Incorporated
Scott Stevens/Pizza Pro
Wal-Mart of Searcy

Chancellor's Cabinet

Roy & Ollie Mae Simmons

Chancellor's Circle

Andy Anderson
Doris Barnes
Brian Berry
Thomas & Polly Brown
Jerry & Suzanne Carlisle

Charles & Jennie Cole
Barry & Linda Farris
Laverne Hale
Joe Hastings
John & Robin Hayes
James "Chuck" & Wanda
Johnson
Mr. & Mrs. Glen Lockeby
Drs. Eugene & Judy McKay
Keith & Alana Pinchback
Doyle Rainwater-Kustom
Klassics
James Wilbourn
Jim & Sherry Wooten
Dewitt and Debbie Yingling

Diamond Club

Judy Brooks
Mr. & Mrs. Bobby Robinson/
Beebe Sonic

Anniversary Club

Tom & Marc Anderson
Addie Banks
Sharon Been
Jerry Burns, M.D.
Candace Cooper
Frank & Hazel Dickey
Robert Doyal
Educational Systems
Products
Macon & Bobby Edwards
Charlie & Rosemary Frame
Dr. & Mrs. Byrne Garrett
David Hamlin

Brandi Hinkle
J. Earnest Howell
David & Jennifer Hurd
Jerry & Nancy Jackson
Michael Jeffrey
Paul & Melissa Jenkins
Charles McClain
Bernard Nichols
Allen & Karen Norton
Rev. & Mrs. Billy Powell
Ralph & Dena Prior
Dr. Mark Taylor
Alvin & Cindy Wheeler
Lisa Vanoven

Friends of the University

Anita Baker
James & Wilma Beard
Beebe Lawn & Power Equip.
Chris Boyett
Charlene Chambers
Bobbie Cordell
William D. Elliott
Joe B. & Kaye Finley
Pam Hinkle
Melissa Meador
Metropolitan Fire
Extinguishers
Debra Nance
Neil Outar
Lanny Smith
Joe & Jackie Taylor
Steve & Angie Totty
Linda Yelder

ASU-Beebe's Office of Institutional Advancement offers several annual gift categories to fit every level of giving: Lifetime Members (cumulative gift of \$10,000 or more); Chancellor's Cabinet (\$5000-\$9999); Chancellor's Circle (\$500-\$4999); Diamond Club (\$250-\$499); Anniversary Club (\$100-\$249); Friends of the University (\$35 or couple \$50-\$99).

Information on the ASU-Beebe gift clubs may be obtained by contacting Keith Pinchback, Office of Institutional Advancement, P.O. Box 1000, Beebe, AR 72012 or calling (501)882-8255.

Why give to the ASU-Beebe Annual Fund?

Giving to the ASU-Beebe Annual Fund is an important way to support ASU-Beebe. Each year the gifts our donors make provide new opportunities for ASU-Beebe to pursue.

Consider the following:

ASU-Beebe's Annual Fund is used for non-restricted needs of the university. Specifically, it:

- Supplements scholarships
- Promotes community and student activities
- Supports faculty awards
- Funds alumni activities
- Promotes ASU-Beebe.

All gifts to ASU-Beebe are tax deductible. Without our supporters, there would be many things we could not do. Join the many former students, faculty and staff, and community leaders giving back to ASU-Beebe today. A pledge card is available on this page. **It's never to late to give!**

"We can't thank enough the friends of ASU-Beebe who annually provide us funds that help make ASU-Beebe a great school and a great place to work," said Keith Pinchback, director of Institutional Advancement.

For more information, contact Pinchback at (501) 882-8255.

ARKANSAS STATE UNIVERSITY-BEEBE

2005-2006 ANNUAL FUND

- Outstanding Alumni & Students
 - Student Awards
- Community & Student Activities
- Alumni Special Events
 - Faculty Awards
- ASU-Beebe Promotion

I/We wish to make a gift to:

- | | |
|--|---|
| <input type="checkbox"/> Chancellor's Cabinet (\$5000) | <input type="checkbox"/> Anniversary Club (\$100) |
| <input type="checkbox"/> Chancellor's Circle (\$500) | <input type="checkbox"/> \$35 (Friends of the University) |
| <input type="checkbox"/> Diamond Club (\$250) | <input type="checkbox"/> Other amount |

Enclosed is my gift of \$ _____ or my pledge of \$ _____ payable to Arkansas State University-Beebe's Annual Fund. I am employed by _____ and my gift will be matched by my employer.

Charge my credit card Visa MC Discover AE
 Account # _____



Beebe, Heber Springs, Searcy
 Little Rock Air Force Base

Donor(s) Name(s) _____ Email _____
 Address _____ City, State, Zip _____ Phone _____
 Social Security # _____ or Tax ID _____

GIFTS TO ASU-BEEBE ARE TAX DEDUCTIBLE.

Please return to Office of Institutional Advancement, P.O. Box 1000, Beebe, AR 72012.
 For more information, please call (501) 882-8255.

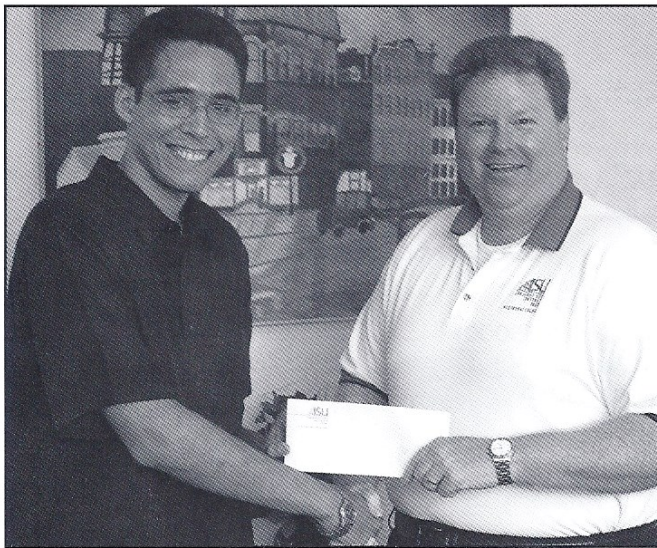
2005-2006 Scholarship Recipients



Pizza Pro representatives Linda Matthews and Gerald Parent presented Joey Trimble of Beebe and Jessica Haskins of Cabot (center) the first **Pizza Pro Scholarships** awarded at ASU-Beebe. Joey and Jessica are second-year students and maintained a 4.0 GPA their first year.



Brian Halldorson, a second-year student at ASU-Heber Springs, is the first recipient of the **Dr. Ruth Couch Endowed Scholarship**. Brian is a four-year veteran of the U.S. Navy and is working toward a pharmacy degree. He is pictured with Dr. Couch.



Adam Musgrave of Brinkley is the first recipient of the **ASU-Beebe Development Council Scholarship**. A 4.0 student after his first year, Adam is hoping to work as a network administrator after college. He is pictured with Keith Pinchback, Director of Institutional Advancement.



The ASU-Beebe Alumni Association presented its second annual **Alumni Book Scholarship** to Tamara Gillham of Searcy and Kevin Larkan of Beebe, both second-year students. The \$400 award will provide textbooks for both the fall and spring semesters.

ASU-Beebe Alumni Association

Upcoming Association Events

Alumni Association Children's Christmas Party---Saturday, December 10

Association Annual Meeting---Monday, January 23

ASU vs. UALR Basketball---January 9, 2006

Sixth Annual Alumni Association Book Scholarship Race---April, 2006

Save the Date for Homecoming/Alumni Weekend in Spring 2007!!



Alumni Association Board Members were recognized at the Association's 2005 Annual Meeting in January. From left: Rosemary Frame, Secretary; Randy Busbea, Past President; Lance Wright; Judy Brooks, President; Joe Bill Finley; James Fuller, Vice President; Paul Ramsey. Not pictured: Todd Carpenter, Ashlee Fish Giles and Beverly McCay.

The ASU-Beebe Alumni Association was chartered in 2000 and it is the primary intent of the Association to retain close ties between students, former students, and friends of the University. The Association offers individuals the benefits of reuniting with old friends, making new friends who share a common interest of supporting ASU-Beebe and higher education, and offering opportunities for connecting with other alumni, students, and the surrounding communities.

Join the Association Today! Dues are only \$6 per year or \$10 for two years.

Yes! I'd like to join the ASU-Beebe Alumni Association!

Full Name _____

Maiden Name _____

Mailing Address _____

Phone Number _____

Email address _____

Years attended ASU-Beebe/Graduation Year _____

Degree/Program of Study _____

Please return membership form to: ASU-Beebe Office of Advancement, P.O. Box 1000, Beebe, AR 72012.
For more information, call (501) 882-8255.

ASU-Beebe Alumni Association is now online at www.asub.edu!
Join the Association, update your contact information, check for current events and much more!

Alumnus of the Year

By Melissa Jenkins

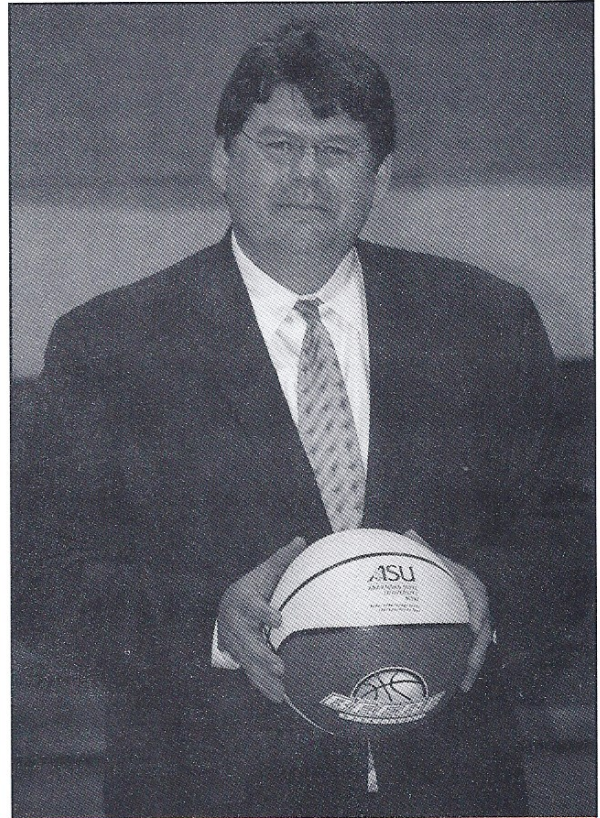
Many Arkansas State University-Beebe graduates from the late 1970s may remember Gene Higginbotham from the basketball court. In fact, he came to ASU-Beebe because of a basketball scholarship. Almost 20 years later, Higginbotham still shares a love of sports, but he's also managed an impressive career that has touched many lives. This October, he'll be honored by ASU-Beebe as the 2005 Outstanding Alumnus at the annual meeting of the Arkansas Association of Two Year Colleges in Hot Springs.

"Had I gone to a bigger school right away, I'm not sure I would have finished my college education. For me, ASU-Beebe was the perfect school. I would beg the administration to make it a four-year school," he said. After almost two years at ASU-Beebe, Higginbotham played basketball at Jonesboro for one semester and then came back to Beebe to finish his associate's degree. He then continued his education at Southeastern Oklahoma State University in Durant. He now holds two masters degrees, one in education and one in sports administration. But, he still holds a fondness for ASU-Beebe. On a recent visit to campus, he pointed out his dorm room in Quapaw Hall, reminisced about faculty members, and spoke fondly of his memories as a co-captain on the basketball team.

His career off the court has included pursuits in both public service and athletics, ranging from work with the Atlanta Braves and the 1996 Olympics, serving as a U.S. Deputy Marshall, coordinating projects for the Central Arkansas Development Council (CADC) and now representing U.S. Senator Mark Pryor. "My Olympics experience was probably the hardest I've ever worked, but also probably one of the most rewarding," said Higginbotham. One of his most memorable experiences with CADC included helping to establish a volunteer fire department in Lodi, Ark.

Today he lives in Bryant and works for Senator Pryor in 25 eastern Arkansas counties, although it's not unusual for him to visit all 75 counties throughout the course of his required duties. On an average day he travels far and wide to community and civic events, works as an intermediary between

continued on page 18



For me, ASU-Beebe was the
perfect school.

--Gene Higginbotham

Students Recognized at Annual Banquet

Several Arkansas State University-Beebe students were honored at the annual ASU-Beebe Awards Banquet held last spring. The students were presented division awards for leadership and outstanding scholastic achievement in their major fields of study.

Selected for the English and Fine Arts Awards were Alexis Brewer, a sophomore liberal arts major from Jacksonville, Katie Brock, a sophomore, liberal arts major from Cabot, and Heather Runyan, a sophomore liberal arts major from Beebe. The Advanced Technology and Allied Health Awards went to April Layton, a sophomore medical laboratory technology major from Searcy, and Tyler Wells, a sophomore computer systems technology major from Beebe. The Business and Agriculture Awards went to Pam Gibley, a sophomore business major from Cabot, and Brittany Kaufman, a sophomore liberal arts major from St. Vincent. The Education and Social Sciences Awards went to Mark Harvel, a sophomore liberal arts major from Lonoke, and Tammy Williams, a sophomore liberal arts major from Judsonia. The Mathematics and Science Awards went to Jennifer Loar, a sophomore liberal arts major from Austin and Walter Paul Turner, a sophomore liberal arts major from Searcy.

The ASU-Heber Springs Award went to Adam Sartain, a sophomore liberal arts major from Drasco, and the ASU-Searcy Awards went to Kristin Hernandez, a freshman business major from McRae and Debbie Tims, a sophomore automotive technology major from Searcy. Darlene Blood and Lindsay Davis, both education majors, received the Arkansas State University Jonesboro program award.

The Citizenship Awards, the university's most prestigious awards, went to Josh Garner, a sophomore agriculture law major from Melbourne, and Brittany Kaufman, a sophomore liberal arts major from St. Vincent.



Arkansas State University-Beebe Citizenship Award winners Josh Garner and Brittany Kaufman were chosen by the faculty and staff for their contributions to the campus in areas of education, activities and leadership.

Jones Donation, *continued from page 6*

successful investors in history including Warren Buffett, Sir John Templeton, Peter Lynch, Ben Graham, and others.

“ASU-Beebe is the only two-year institution in the state to be given this opportunity,” Mitchum said. “This will be a great learning experience for ASU-Beebe business students.”

“Marvin is a great friend of ASU-Beebe and our students. His gift will enable the business students to learn the stock market through real-life investments,” said Dr. Eugene McKay, chancellor.

The Department of Business offers the Associate of Arts degree and the Associate of Arts in Computer Information. These degrees can be applied toward a bachelor's degree in accounting, administrative services, business education, business administration, economics, finance, management, marketing, computer information systems, or other business-related areas. The Associate of Applied Science in Business Technology is available for students who desire quick entry into the workforce.

Community Bank Presents 2005-2006 Concert Series



Arkansas State University-Beebe and Community Bank will once again present a year of world-class concert

events and entertainment during its 2005-2006 Concert Series. The concert series offers an eclectic mix of entertainers and presenters, from opera and a light show to symphony and ballet.

The series will begin with *Cosi Fan Tutte*, preceded by an opening-night reception. Ticket-holders are welcome to attend the reception, beginning at 6 p.m. the evening of Monday, Oct. 10 in the Owen Center lobby.

The concert calendar includes:

Cosi Fan Tutte **Monday, Oct. 10**

Capitol City Opera presents Wolfgang Amadeus Mozart's, *Cosi Fan Tutte*, ("All Women Are Like That"), an opera in two acts sung in English about two couples, a bachelor, and a bet....crazy deception, wild shenanigans, and a happy ending.

LUMA: Theater of Light **Monday, Nov. 14**

LUMA is a new genre of performance art that takes the light show off the screen and puts it on the stage with depictions of fireflies, shooting stars, carnival rides, screen savers, the northern lights, rainbows, and the body electric.

The Arkansas Symphony's Quapaw Quartet **Monday, Jan. 23**

This quartet will perform featuring two violins, a viola, and a cello.

Bruce Wood Dance Company **"Follow Me: A Tribute to the U.S. Infantry"** **Monday, Feb. 20**

This is a ballet created by choreographer Bruce Wood as a tribute to the United States Infantry. The ballet is made around the themes of brotherhood, nobility, courage, and sacrifice.



The Drifters

The Drifters **Monday, April 3**

Since the Drifters formation 40 years ago, they have sold almost 50 million albums worldwide with songs such as "Under the Boardwalk" and "This Magic Moment." The current act blends a tasteful mixture of the Drifters' million sellers and contemporary standards, all presented within the context of the Drifters' unique style.

Tickets prices are \$30 for five events or \$10 per concert event. Senior citizens tickets are \$8, and student ticket prices are \$3. Alumni Association members may purchase season tickets for \$25 or individual tickets for \$9. Ticket outlets in Beebe include ASU-Beebe Student Center, Burrow's Drug, Health-Way Sav-On Drugs, and Beebe Flower Shop. In Cabot, tickets may be purchased at Dot's Florist. Outlets in Searcy include Stotts Drug and the Office of Student Services at ASU-Searcy.

All concert series events begin at 7:30 p.m. in the Owen Center Theater. The Theater Box Office will open at 6:45 p.m. for 7:30 events, with seating beginning at 7 p.m., as permitted by artists' contracts. Season ticket holders will be seated for the first 10 minutes after seating begins.

Ten minutes before curtain, all vacant seats will be released to the general public, and all seating is general admission. For more information, please call (501) 882-8351.

Dedicated Employee, Volunteer Recognized

Arkansas State University-Searcy employee Cheryl Tripp was recognized as a finalist for Outstanding State Employee by the Arkansas State Employees Association. Tripp was nominated for this award for her dedication to her students and community involvement.

Tripp began her career at Foothills Technical Institute, now ASU-Searcy, 17 years ago as a part-time employee working with the Job Training Partnership Act. She was such an impressive employee she was hired full-time to teach remedial and night courses, help tutor students, and assist with many other teaching duties. Today she still works with remedial students, but she also is the special needs coordinator for the campus. In addition, she implemented the ELITE (Entry Level Industry and Technology Education) program, which works to employ under skilled and unemployable persons.

Community service provides Tripp with the opportunity to help Arkansas residents. She is a board member for the American Red Cross, White

County Community Foundation, White County Single Parent Scholarship Fund, and Best Friends for Life Animal Rescue. Tripp also volunteers her time with United Way, Chamber of Commerce Workforce Development Committee, Local Emergency Planning Committee, and the youth in her church. She is credited for moving the White County Single Parent Scholarship Fund to award more than 26 scholarships a year.

Cheryl's service to the American Red Cross has been particularly remarkable. Not only does she serve as a tireless disaster response volunteer (even when her own home was once damaged during a



Cheryl Tripp

Cheryl's service to the American Red Cross has been particularly remarkable. Not only does she serve as a tireless disaster response volunteer (even when her own home was once damaged during a

continued on page 19

ASU-Beebe Volunteerism

Arkansas State University-Beebe was honored for volunteerism by the Spirit of 110 Council and the State of Arkansas at the 2004 Volunteer Employee Recognition event, held at the Governor's Mansion. The University was also included in the State Agency Volunteerism Directory, which lists ASU-Beebe with 464 volunteer hours by 60 individuals for a volunteerism dollar value of \$41,290. Several employees attended the event and accepted the certificate on behalf of ASU-Beebe and its campuses at Searcy, Heber Springs, and the Little Rock Air Force Base.

Faculty and staff participated in many community and volunteer activities in 2005 including Searcy Relay for Life, White County Medical Center's A Day of Caring, Cabot City Clean-Up, Leadership Beebe and Leadership Searcy, and much more.



ASU-Beebe employees pictured (from left) with Division of Volunteerism Director Sherry Anderson (center) and Governor Mike Huckabee (far right) are Jerry Sites, Charles Moore, Dottie Whiteside, and Addie Banks.



ASU-Beebe Students and Staff participated in the 2005 Cabot City Clean-up in April.

Chancellor Recognizes Outstanding Staff

Dr. Eugene McKay recognized outstanding faculty and staff at the annual Staff Appreciation Dinner in April. This year's recipients are as follows.

STEVE STORM

His talent, dedication, flexibility, and ability to multi-task has earned him the respect of the administration, his colleagues, his students, and the chancellor.

ROBIN HAYES

For planning and implementing the very successful first ASU-Beebe Preview Day, for being the always-smiling public face of ASU-Beebe to prospective students and their families, for staying as late as necessary to get new students registered, and for traveling thousands of miles a year in the pursuit of prospective students.

MARK HASTINGS

For maintaining buildings in excellent condition and for responding to trouble calls day and night in an efficient and friendly manner.

BOB JENKINS

For excellent work as vice chancellor for academic affairs. He kept the train on the track and actually got it farther up the hill. All of his work is greatly appreciated by the chancellor and his colleagues at ASU-Beebe.

JERRY CARLISLE

For his excellent work in developing and implementing master plans for all of our campuses. His preparatory work for the master planning committees has made the process more efficient and more fun for the rest of us on the committees. His efforts have resulted in more beautiful and more effective campuses.

DR. TAMMIE BURGER

For producing excellent madrigals; for developing a music program that attracts the talented and the highly talented.

CHERYL TRIPP

For her outstanding awarding-winning community service, and for coordinating a successful ELITE program.

DOTTIE WHITESIDE

For developing and promoting a successful continuing education program on the ASU-Beebe campuses, and for her positive attitude in dealing with students and colleagues.

Alumnus, *continued from page 14*

constituents and caseworkers, and helps to solve the problems and hear the concerns of Arkansas' citizens. Higginbotham spoke highly of his work with Senator Pryor for the opportunities it affords him to work with people and to travel across Arkansas. He said, "I often ask myself, how did I get here with this opportunity?" Higginbotham has served as Field Representative for the Senator since 2003.

"Gene is an outstanding public servant who is committed to helping Arkansas families solve problems and enjoy a better quality of life. I'm pleased that ASU-Beebe is recognizing him with this award," said Senator Pryor.

As for the future, Higginbotham said he is happy where he is right now because his job is so fulfilling for him. He really enjoys being behind-the-scenes helping to make a difference in people's lives. If you miss him in his travels for Senator Pryor, you may just find him at the ASU Convocation Center cheering for the Indians and sharing his love for the sport that brought him to ASU-Beebe.

Kalthoff, *continued from page 4*

state, in addition to several out-of-state students. A class of 600 graduated in December and May with degrees ranging from technical certificates to Associate of Arts and Associate of Applied Science in Health Degrees. Additionally, more than 100 students graduated this year with bachelor's and master's degrees through Arkansas State University programs offered at ASU-Beebe.

"I am very excited about working with the faculty, staff, and students through the Office of Academic Affairs," Kalthoff said. "This area of the state is experiencing economic growth and ASU-Beebe is dedicated to meeting the educational needs of the community."

Kalthoff has been involved in many community activities including Boy Scouts since he was 11. He and his wife, Sharon, have two children, T. Jay and Lisanne, who are both attending college.

Did YOU Know?

- * ASU-Beebe, founded in 1927, is the oldest two-year institution of higher education in Arkansas.
- * ASU-Beebe consistently awards more associate degrees than any other two-year institution in Arkansas.
- * ASU-Beebe is now the tenth largest college in the state of Arkansas, and third largest among two-year colleges. Enrollment for Fall 2005 is approximately 4000 students.
- * For the last reported academic year, ASU-Beebe had the highest first-time, full-time student retention rate of any two-year institution in Arkansas.
- * ASU-Beebe has awarded 2238 degrees since spring 2000.
- * ASU-Beebe served approximately 5678 non-credit students for the 2004-2005 year in the following areas:

| | |
|--------------------------------|------|
| o Continuing Education | 2266 |
| o Industry Training | 1780 |
| o Adult Education | 1169 |
| o Secondary Area Career Center | 454 |
- * ASU-Beebe boasts a state-of-the-art Learning Center, offering free tutoring services to all students, five days a week. The center has been called a premier student support service by national consultants.

Volunteer, *continued from page 17*

tornado), but she is credited with saving the White County chapter. She was instrumental in helping the Red Cross Chapter to retain its charter and United Way funding during some tough years. She led the group as Chair of the board and built bridges between the United Way and the Red Cross Chapter that had never existed. For this she was recognized with the Cynthia Wedel Award and was also nominated for the national recognition. She even helped administratively when the chapter was between directors.

"We are proud to have Cheryl as an ASU-Beebe employee; she is an optimistic, warm-hearted person who brightens up the room," Dr. Eugene McKay, chancellor said.

"There are many 'Outstanding State Employees' and I am very honored to have been nominated for this award. I feel very fortunate in being able to help others as part of my job, which goes hand-in-hand with my involvement with various community organizations," Tripp said.

Guard Benefits, *continued from page 7*

ASU-Beebe has the second largest number of National Guard members in the state. Currently 60 students are enrolled at ASU-Beebe. The tuition benefits will aid both current and future Guard members who attend ASU-Beebe and its campuses. Many of the students attended the ceremony to support the signing.

"ASU-Beebe has been a long-time supporter of our National Guard and other military personnel. Since 1966, we have offered educational programs at the Little Rock Air Force Base and we have always gone the extra mile to support our veterans and reservists as they pursue their educational opportunities," said McKay.

For more information about this new tuition benefit, please contact the ASU-Beebe Admissions Office at 800-632-9985.



ASU-Searcy participated again in the annual Relay for Life in June. The annual event raises money for the American Cancer Society. ASU-Searcy's team raised just over \$2000 for the cause.



ARKANSAS STATE
UNIVERSITY
BEEBE™

Beebe, Heber Springs, Searcy
Little Rock Air Force Base

OFFICE OF INSTITUTIONAL
ADVANCEMENT
P.O. BOX 1000
BEEBE, AR 72012

ADDRESS SERVICE REQUESTED