

Update

March 10-14, 2008

View Online: www.asub.edu

Safe Spring Break Week Activities-March 10-14

Students, faculty, and staff are invited to participate in the Annual Safe Spring Break Activities to be held the week before Spring Break. These activities are sponsored by the Counseling Center.

This year's theme is "Snapshot for a Safe Spring Break," with all activities to be held at the Student Center, between 11 a.m.-2 p.m. daily. Prizes include an Olympus digital camera, digital photo frames, thumb drives, disposable cameras, key chains, goody bags, and more, however, participation is required for prize eligibility.

Monday, Mar. 10: "Would You Ride this Drive?" activity.

Tuesday, Mar. 11: Health Fair

Wednesday, Mar. 12: Carding Zone

Thursday, Mar. 13: Prevention Bingo

All week, students may sign "Promise Tree" pledge cards to have a Safe 2008 Spring Break.

Spring Glow Out Dance and March Activities

Student Activities will sponsor the Annual Spring Glow Out Dance on **Thursday, Mar. 13**, starting at 8 p.m. at the Student Center. Admission is free. Then, on **Wednesday, Mar. 26**, Student Activities will sponsor Casino Night from 3 p.m. to 7 p.m. at the Student Center. Students, faculty, and staff are invited to participate in these events.

Legal Presentation Set for March 10

A presentation on the "Top 10 Legal Terms Every Person Should Know" will be offered by the Continuing Education Department at ASU-Searcy, a technical campus of ASU-Beebe, on Monday, Mar. 10 at 6:30 p.m. on the Searcy campus, located at 1800 East Moore Avenue. Penny Collins Choate, owner and attorney for Choate Law Firm, PLLC in Little Rock and Searcy, will teach this free and informative presentation.

Veterinary Technicians Scholarships Awarded

Several students in the Veterinary Technician program on the Beebe campus recently were awarded scholarships from the Arkansas



Veterinary Technician scholarship recipients are pictured left to right: Jess Maher, Megan Livesay, Robyn Holland, Amber Miller, Eryn Woodrow, Ashley Davenport, Lindsay Soine, and Jaclyn Albright. (Not pictured is Rachel Smith)

Medical Association and Arkansas Veterinary Foundation. The \$500 scholarships were based on the students academic achievements and were used for the spring 2008 semester. Veterinary Technicians are educated professionals who complete an American Veterinary Medical Association (AVMA) accredited program.

Technicians are responsible for many tasks including inducing and monitoring anesthesia, dentistry, taking radiographs, nursing care, assisting in surgery, hospital management, and performing laboratory tests to name a few.

Taco Salad Fundraiser

Members of the Vet Tech Club will be selling taco salads on Monday, Mar. 31 to raise money for the Veterinary Technician program. The taco salads cost \$4 each, with orders taken by Vet Tech Club members or club advisor Amanda Underhill at 882-4411 or email: arunderhill@asub.edu. Salads may be delivered upon request or may be picked up at the Business and Agriculture Building hallway table.

Cultural Film Series On March 12

The Cultural Film Series will be presented by Dr. Steve Manning on Wednesday, March 12 at 1 p.m. in the Owen Center Conference Room. This free film, called "The Elegant Universe: Superstrings, Hidden Dimensions, and the Quest for the Ultimate Theory," is open to all students, faculty, and staff.

Quote of the Week—"The more we live by our intellect, the less we understand the meaning of life."
-Leo Tolstoy



This Week:

March 10-14 – Safe Spring Break Week Activities, SC.

March 10 – Legal Presentation, 6:30 p.m., Searcy campus.

March 13 – Student Activities presents Spring Glow Out Dance, 8 p.m., SC.

Future Events:

Mar. 17-Mar. 22 – Spring Break.

March 26 – Student Activities presents Casino Night, 3-7 p.m., SC.

March 31 – Vet Tech Club Taco Salad Sale, B&A Building.

Campus Services:

Bookstore: Mon-Fri, 7:30 a.m.-4:30 p.m.

Counseling Center: Mon-Fri, 8 a.m.-5 p.m., SC205.

Learning Center: Mon-Thurs, 8 a.m.-8 p.m., Fri, 8 a.m.-4 p.m., SC200.

Abington Library: Mon-Thurs, 7:30 a.m.-9 p.m.; Fri, 7:30 a.m.-4:30 p.m.; Sat, 10 a.m.-3 p.m.; Sun, 1-5 p.m. Email: refquest@asub.edu.

Student Center: Mon-Thurs, 8 a.m.-8 p.m.; Fri, 8 a.m.-7 p.m.

Student Support Services: Mon-Fri, 8 a.m.-5 p.m., ST125.

Intramural Sports Program

Air Hockey will be played on March 11.

Open registration for **softball** will be held through March 13, with games to begin March 25 and continue through April 10.

Registration forms for any Intramural Sports event may be picked up at the Intramural Sports Office in the Owen Center.

The Intramural Sports Program is open to students, faculty, and staff, and provides an opportunity for everyone to participate in a variety of activities throughout the year.

For more information, call Ashley Goodwin at 882-4475 on Tuesdays or Thursdays.



S

D

R

M

A

O





Student Organizations:

ASU-Searcy Student Voice-1st & 3rd Thurs., 11:30 a.m.-12:00 p.m.

Agri Club-2nd & 4th

Tues., 12:30 p.m., University Farm.
Art Club-1st Thurs., 12:30 p.m., OC146.

BCM-Every Thurs., 12:30 p.m. at Stephens Room, Student Center.

Debate Club-Thursdays, 2:40 p.m., OC144.

Ecology Club-2nd Tues., 12:30 p.m., M&S, Room 107.

Future Educators Club-2nd & 4th Thurs., 12:30 p.m. SC.

Gamma Beta Phi-3rd Thurs., 12:30 p.m., Stephens Rm., SC

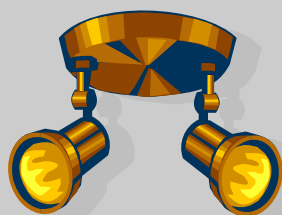
Leadership Council-3rd Tues., 12:30 p.m., SC.

International Club-1st & 3rd Thurs., 12:30-1:15 p.m., University Café, SC.

Phi Beta Lambda-2nd Thurs., 12:30 p.m., B&A201.

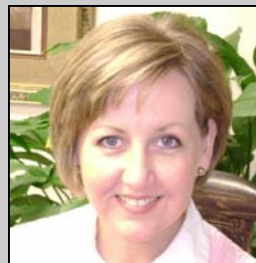
Student Advisory Board-1st Friday only, 3 p.m., SSS Classroom 133, ST.

Tau Alpha Pi-TBA



Spotlight On

Human Resources Mandy Abernethy



Mandy Abernethy

Mandy Abernethy, of Little Rock, is the Director of Human Resources for all ASU-Beebe campuses.

In this position, Abernethy manages the University's recruiting efforts, hiring practices and employee benefits and training. Abernethy and her staff are responsible for ensuring all University policies and procedures are administered in a way that ensures applicants and employees are afforded all protections offered by various federal and state laws.

Born in St. Louis, MO., Abernethy began her career as a classroom teacher in the North Little Rock School District, attending law school at night. After becoming an attorney, she worked as a prosecutor for the Child Support Enforcement Unit. An interest in employment law led her to defense work, and working with human resource profes-

sionals. "My current role at ASU-Beebe is a wonderful blend of my interests in education and employment law," said Abernethy.

In addition to her job duties, Abernethy retains membership in the Arkansas Bar Association, and supports the American Red Cross, American Cancer Society, and The Colon Club (a group established to educate people about colorectal cancer), and Heifer Project International.

Abernethy's family includes her husband and daughter, who is a senior in high school, and two adult stepchildren. The family has two cats, Dixie and Ralph, and a boxer named Ramsey.

A fan of the outdoors, Abernethy particularly enjoys hiking, canoeing, fishing, and walking. Abernethy recently participated in the Little Rock Marathon, walking the full 26.2 mile course.

"If I could persuade students to follow any advice," said Abernethy, "It would be that advice given by Mahatma Gandhi: 'You must be the change you want to see in the world.'"

News Briefs

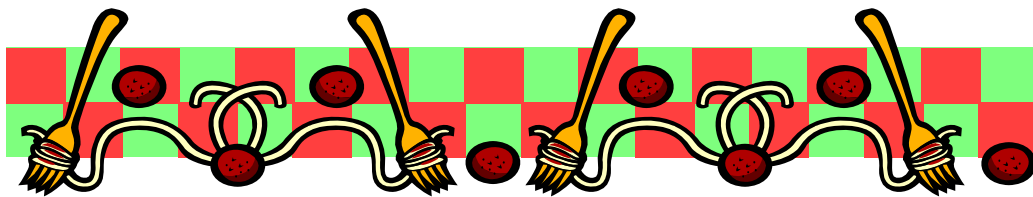
Faculty Senate Fundraiser

ASU-Beebe's faculty members are sponsoring a fundraiser to help replace Beebe's Humane Society's animal kennel building that was destroyed by strong winds in January. If anyone would like to donate money, please place your donation in an envelope and label the envelope "Beebe Humane Society." Checks may be written to: ASU-Beebe with a note in the memo "For: Beebe Humane Society." Donations may be given to division reception offices, faculty members, or a Faculty Senate Officer. Donations will be accepted until March 11.

Campus Upcoming Events

The final presentation in the Community Bank's Concert Series will be Broadway Showstopper on April 3. Concert Series performances are held on Thursday evenings beginning at 7:30 p.m. at the Owen Center Theater. ASU-Beebe students are admitted free by calling the Ticket Office in advance at 882-8351.

Then, on April 18-20, ASU-Beebe's Theater Department will present "Desk Set" by William Marchant.



Accepting Visa and MasterCard **University Café Menu** Located in Student Center; Ph. 882-4430

Day	Breakfast	Lunch	Dinner
Monday (3/10)	Chocolate Gravy Available Mondays	Chicken Fajitas, Mexican Rice, Grilled Peppers, Refried Beans, Apple Crisпитos.	Pasta Bar, Meat Sauce, Marinara, Alfredo, Broccoli, Vegetable, Garlic Toast.
Tuesday (3/11)	Breakfast Burrito	Rotisserie Chicken, Cheese Rice, Broccoli, Green Beans, Squash, Strawberry Shortcake.	Wings, Hot Wings, Tater Tot Casserole, Vegetable, Broccoli, Rolls, Dessert.
Wednesday (3/12)	Fresh Cinnamon Rolls Every Wednesday	Home Cookin-Meatloaf, Brown Beans, Fried Potatoes, Vegetable, Cornbread, Apple Pie.	Chicken Crispito, Nachos, Queso, Mexican Rice, Corn, Refried Beans, Sopapilla.
Thursday (3/13)	Hot Cereal—Grits or Oatmeal Are Available Thursdays	Chicken Fried Steak, Mashed Potatoes, Gravy, Asparagus, Green Beans, Rolls, Cheesecake.	Chicken Strips, Rice, Vegetable, Rolls, Dessert.
Friday (3/14)	Friday Fresh Muffins	St. Patrick's Day Buffet—\$6.00. Assorted Salads, Irish Stew, Corned Beef & Cabbage, Soda Bread, Green Desserts, Beverage.	The University Café will close at 2 p.m. on Friday, March 14 for Spring Break.

Local Supporters

The following businesses have contributed to the 2007-2008 Annual Fund Drive at ASU-Beebe:

Regions Bank
Eoff and Associates
Community Bank
Shelter Insurance
Subway
Sonic
McDonald's of Beebe
Benihana Steakhouse in NLR

These monies help fund scholarships and special activities at the University:

Please show your support by giving to the annual fund and patronizing these sponsors.



Arkansas State University-Beebe

